



Aintree Accident and Emergency department Monthly bulletin: April 2006 to March 2007

This bulletin provides a breakdown of all attendances¹ at Aintree Accident and Emergency (A&E) department between April 2006 and March 2007.

Figure 1 illustrates the number of A&E attendances by month of attendance. July had the highest number of attendances at Aintree A&E department during this time period (n=7,969).

Figure 1: Total number of A&E attendances by month, April 2006 to March 2007

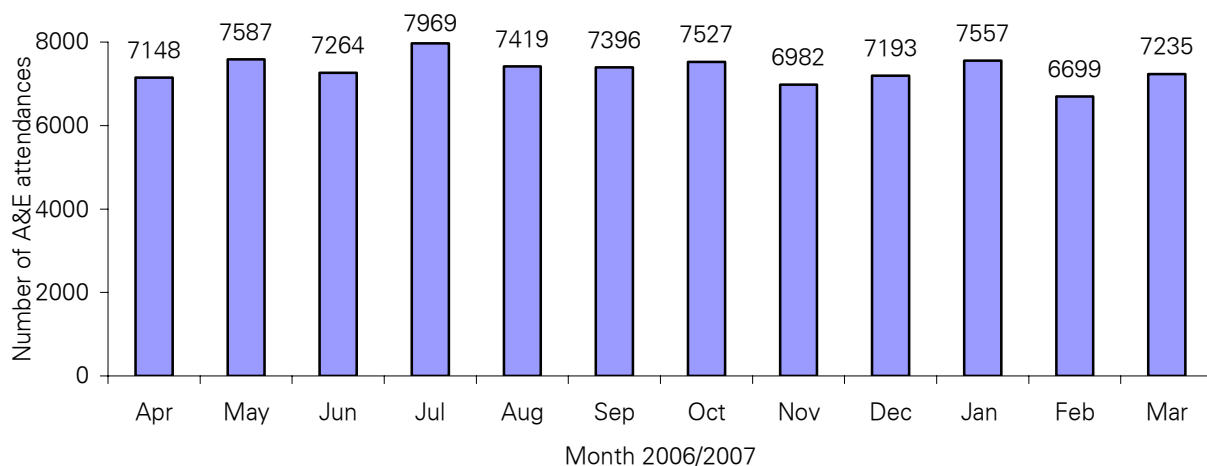
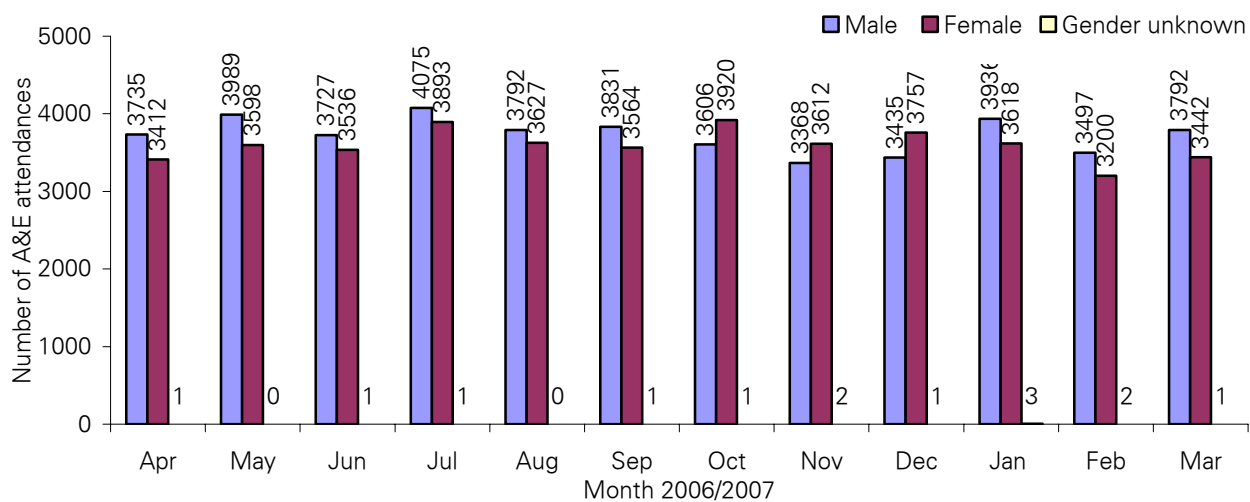


Figure 2 shows A&E attendances by gender. For all months there were more male than female attendances presenting at Aintree A&E department.

Figure 2: Gender of A&E attendances by month, April 2006 to March 2007



¹ For other A&E departments, TIIG reports on trauma incidents only. However, this report includes all attendances at Aintree Accident and Emergency. This is due to the high number of 'unknown' injury groups amongst attendances at Aintree A&E which makes it difficult to analyse trauma cases separately.

Figure 3 illustrates age group of A&E attendances for each month. The majority of A&E attendances were aged 15 plus. This is probably due to the close proximity of a local children's A&E department (Alder Hey).

Figure 3: Age group of A&E attendances by month, April 2006 to March 2007

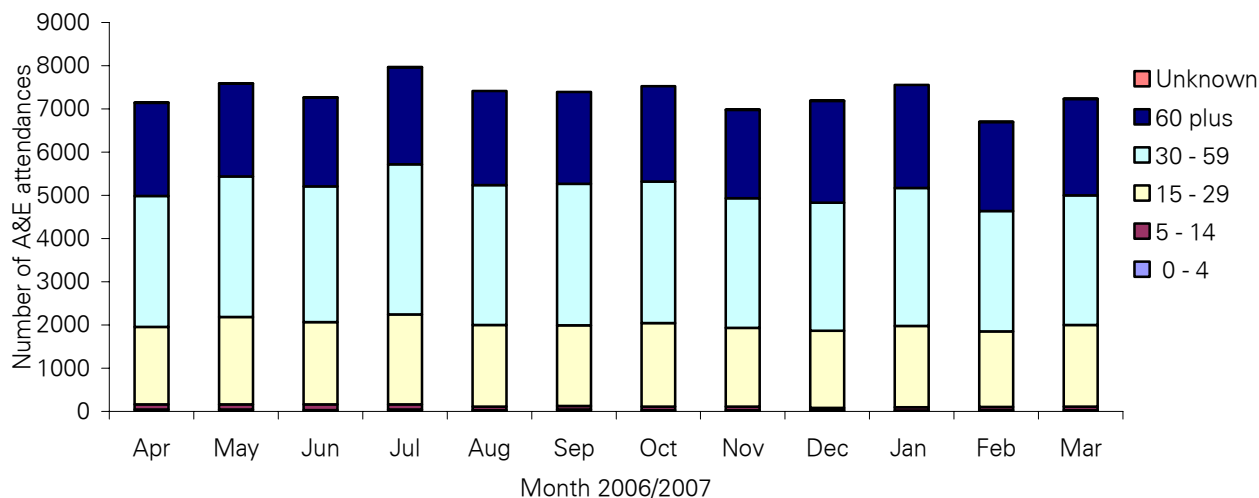


Table 1 details the injury group of A&E attendances. In over three quarters (80%) of attendances, injury group was recorded as other or unknown. This group will include A&E attendances that are not injury related, such as heart attacks. Of those injury groups recorded, falls accounted for 44% of attendances, assaults 18% and road traffic accidents 18%.

Table 1: A&E attendances by injury group, April 2006 to March 2007

| Injury Group | Apr | May | Jun | Jul | Aug | Sep | Oct | Nov | Dec | Jan | Feb | Mar | Total | % |
|-----------------------|------|------|------|------|------|------|------|------|------|------|------|------|-------|-----|
| Other | 5518 | 5704 | 5576 | 6163 | 5694 | 5767 | 5845 | 5351 | 5641 | 5973 | 5215 | 5630 | 68077 | 77 |
| Fall | 682 | 720 | 635 | 734 | 703 | 677 | 606 | 588 | 644 | 616 | 582 | 645 | 7832 | 9 |
| Assault | 272 | 328 | 306 | 278 | 265 | 245 | 302 | 231 | 259 | 282 | 235 | 206 | 3209 | 4 |
| Road Traffic Accident | 247 | 273 | 261 | 282 | 276 | 251 | 285 | 317 | 268 | 240 | 236 | 251 | 3187 | 4 |
| Unknown | 134 | 223 | 202 | 210 | 180 | 147 | 159 | 174 | 137 | 144 | 151 | 180 | 2041 | 2 |
| Sport | 170 | 197 | 146 | 156 | 158 | 161 | 185 | 157 | 98 | 150 | 149 | 179 | 1906 | 2 |
| Self | 123 | 140 | 137 | 144 | 142 | 146 | 137 | 148 | 127 | 140 | 125 | 139 | 1648 | 2 |
| Firework | 0 | 0 | 0 | 0 | 0 | 1 | 8 | 12 | 13 | 1 | 4 | 3 | 42 | 0 |
| Dead | 2 | 2 | 1 | 2 | 1 | 1 | 0 | 4 | 6 | 11 | 2 | 2 | 34 | 0 |
| Total | 7148 | 7587 | 7264 | 7969 | 7419 | 7396 | 7527 | 6982 | 7193 | 7557 | 6699 | 7235 | 87976 | 100 |

Table 2 illustrates the location where assaults occurred for patients presenting with assault-related injuries. The primary locations of assault were a public space (60%) and the home (18%).

Table 2: Assault attendances by location of incident, April 2006 to March 2007

| Assault location | Apr | May | Jun | Jul | Aug | Sep | Oct | Nov | Dec | Jan | Feb | Mar | Total | % |
|----------------------|-----|-----|-----|-----|-----|-----|-----|-----|-----|-----|-----|-----|-------|-----|
| Public Space | 164 | 190 | 179 | 162 | 156 | 167 | 191 | 138 | 166 | 141 | 137 | 136 | 1927 | 60 |
| Home | 43 | 60 | 63 | 52 | 55 | 38 | 49 | 38 | 45 | 70 | 44 | 35 | 592 | 18 |
| Other | 56 | 64 | 53 | 48 | 42 | 35 | 52 | 45 | 38 | 51 | 39 | 23 | 546 | 17 |
| Work | 8 | 8 | 8 | 12 | 9 | 3 | 7 | 7 | 6 | 19 | 12 | 8 | 107 | 3 |
| School | 0 | 3 | 2 | 1 | 0 | 1 | 1 | 1 | 3 | 1 | 3 | 1 | 17 | 1 |
| Walton Prison | 1 | 3 | 1 | 3 | 1 | 1 | 2 | 1 | 1 | 0 | 0 | 2 | 16 | 0 |
| Altcourse | 0 | 0 | 0 | 0 | 1 | 0 | 0 | 1 | 0 | 0 | 0 | 0 | 2 | 0 |
| In patient - Aintree | 0 | 0 | 0 | 0 | 1 | 0 | 0 | 0 | 0 | 0 | 0 | 1 | 2 | 0 |
| Total | 272 | 328 | 306 | 278 | 265 | 245 | 302 | 231 | 259 | 282 | 235 | 206 | 3209 | 100 |

Table 3 shows the location where falls occurred for patients presenting with fall-related injuries. The primary location for falls overall was the home (54%), followed by a public space (33%).

Table 3: Fall attendances by location of incident, April 2006 to March 2007

| Fall location | Apr | May | Jun | Jul | Aug | Sep | Oct | Nov | Dec | Jan | Feb | Mar | Total | % |
|----------------------|------------|------------|------------|------------|------------|------------|------------|------------|------------|------------|------------|------------|-------------|------------|
| Home | 350 | 390 | 348 | 378 | 340 | 334 | 337 | 328 | 356 | 344 | 338 | 348 | 4191 | 54 |
| Public Space | 255 | 233 | 200 | 250 | 295 | 242 | 175 | 184 | 201 | 194 | 170 | 208 | 2607 | 33 |
| Other | 51 | 57 | 55 | 72 | 40 | 57 | 55 | 38 | 45 | 48 | 38 | 41 | 597 | 8 |
| Work | 22 | 33 | 29 | 30 | 28 | 41 | 33 | 26 | 41 | 27 | 28 | 35 | 373 | 5 |
| School | 4 | 5 | 3 | 4 | 0 | 2 | 5 | 11 | 1 | 3 | 7 | 12 | 57 | 1 |
| Walton Prison | 0 | 1 | 0 | 0 | 0 | 1 | 0 | 1 | 0 | 0 | 0 | 1 | 4 | 0 |
| In patient - Aintree | 0 | 1 | 0 | 0 | 0 | 0 | 1 | 0 | 0 | 0 | 0 | 0 | 2 | 0 |
| Altcourse | 0 | 0 | 0 | 0 | 0 | 0 | 0 | 0 | 0 | 0 | 1 | 0 | 1 | 0 |
| Total | 682 | 720 | 635 | 734 | 703 | 677 | 606 | 588 | 644 | 616 | 582 | 645 | 7832 | 100 |

Table 4 provides data on the disposal method of A&E attendances at Aintree hospital. Just under half (47%) of A&E attendees were discharged².

Table 4: Disposal method of trauma attendances, April 2006 to March 2007

| Discharge Method | Apr | May | Jun | Jul | Aug | Sep | Oct | Nov | Dec | Jan | Feb | Mar | Total | % |
|--|-------------|-------------|-------------|-------------|-------------|-------------|-------------|-------------|-------------|-------------|-------------|-------------|--------------|------------|
| Admitted to hospital | 2034 | 1973 | 1954 | 2064 | 2392 | 2667 | 2796 | 2563 | 2753 | 2836 | 2482 | 2637 | 29151 | 33 |
| Discharged | 1864 | 2076 | 1930 | 2221 | 2082 | 2085 | 2125 | 2015 | 1993 | 2086 | 1800 | 1913 | 24190 | 27 |
| Discharged to care of GP | 988 | 1192 | 1127 | 1163 | 1044 | 956 | 954 | 851 | 781 | 874 | 844 | 932 | 11706 | 13 |
| Other/unknown | 944 | 929 | 1005 | 1053 | 653 | 441 | 322 | 323 | 370 | 370 | 331 | 374 | 7115 | 8 |
| Fracture clinic | 309 | 354 | 325 | 390 | 368 | 352 | 309 | 333 | 302 | 354 | 277 | 307 | 3980 | 5 |
| Discharged to return if condition gets worse | 213 | 277 | 236 | 257 | 235 | 212 | 340 | 237 | 267 | 272 | 246 | 344 | 3136 | 4 |
| A&E clinic | 198 | 263 | 223 | 247 | 203 | 171 | 203 | 208 | 153 | 163 | 194 | 209 | 2435 | 3 |
| Patient left department | 241 | 194 | 162 | 210 | 144 | 165 | 154 | 134 | 227 | 233 | 202 | 167 | 2233 | 3 |
| Discharged to other hospital | 93 | 85 | 96 | 95 | 89 | 93 | 84 | 80 | 80 | 90 | 76 | 95 | 1056 | 1 |
| Own discharge | 62 | 63 | 56 | 68 | 48 | 74 | 59 | 65 | 86 | 86 | 64 | 58 | 789 | 1 |
| Patient did not answer when called for treatment | 76 | 70 | 45 | 89 | 40 | 68 | 47 | 50 | 49 | 68 | 77 | 53 | 732 | 1 |
| Ear/Nose/Throat | 43 | 33 | 31 | 40 | 34 | 27 | 47 | 38 | 32 | 34 | 36 | 43 | 438 | 0 |
| Ophthalmology clinic | 26 | 26 | 29 | 22 | 31 | 39 | 29 | 33 | 41 | 21 | 19 | 43 | 359 | 0 |
| Maxillary Facial Unit | 16 | 19 | 8 | 18 | 11 | 12 | 18 | 19 | 20 | 21 | 15 | 15 | 192 | 0 |
| Died in Department | 15 | 13 | 14 | 7 | 22 | 21 | 19 | 8 | 14 | 19 | 16 | 17 | 185 | 0 |
| Sent to theatre | 7 | 5 | 14 | 8 | 12 | 6 | 5 | 16 | 10 | 17 | 10 | 11 | 121 | 0 |
| Discharged to dentist | 5 | 4 | 4 | 9 | 7 | 3 | 5 | 5 | 3 | 6 | 5 | 10 | 66 | 0 |
| Police custody | 4 | 4 | 2 | 4 | 2 | 3 | 1 | 2 | 10 | 2 | 3 | 7 | 44 | 0 |
| AED GP clinic | 8 | 7 | 2 | 1 | 0 | 0 | 9 | 1 | 2 | 2 | 1 | 0 | 33 | 0 |
| Brought in dead | 2 | 0 | 1 | 3 | 2 | 1 | 0 | 1 | 0 | 2 | 1 | 0 | 13 | 0 |
| Transfer to ward | 0 | 0 | 0 | 0 | 0 | 0 | 1 | 0 | 0 | 1 | 0 | 0 | 2 | 0 |
| Total | 7148 | 7587 | 7264 | 7969 | 7419 | 7396 | 7527 | 6982 | 7193 | 7557 | 6699 | 7235 | 87976 | 100 |

Published May 2007

Zara Anderson and Dan Hungerford

TIIG Analysts

Centre for Public Health, Faculty of Health and Applied Social Sciences, Liverpool John Moores University
Castle House, North Street, Liverpool, L3 2AY

Tel: 0151 231 4505 Email: z.a.anderson@ljmu.ac.uk and d.j.hungerford@ljmu.ac.uk

Website: www.nwpho.org.uk/ait

² Includes: Discharged, Discharged to care of GP, Discharged – to return if condition gets worse, Discharged to another hospital, Own discharge and Discharged to dentist.