

This bulletin provides a breakdown of all attendances¹ at Aintree Accident and Emergency (A&E) department between April 2007 and March 2008.

Figure 1 illustrates the number of A&E attendances by month of attendance. August had the highest number of attendances at Aintree A&E department during this time period (n=7,666).

Figure 1: Total number of A&E attendances by month, April 2007 to March 2008

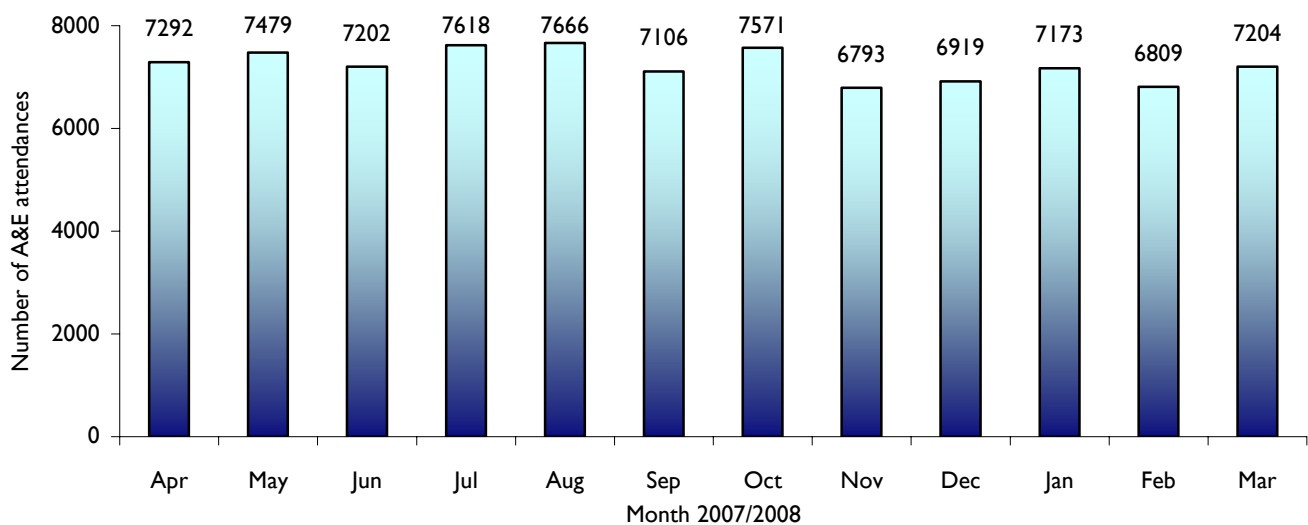
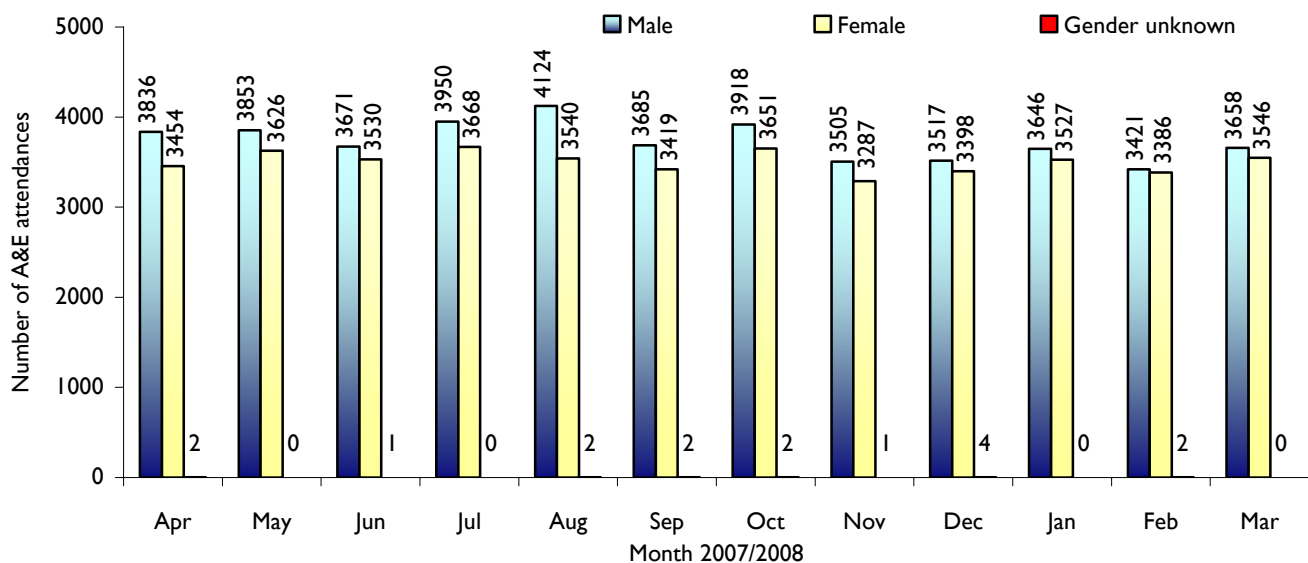


Figure 2 shows A&E attendances by gender. For all months there were more male than female attendances presenting at Aintree A&E department.

Figure 2: Gender of A&E attendances by month, April 2007 to March 2008



¹ For other A&E departments, TIIG reports on trauma incidents only. However, this report includes all attendances at Aintree Accident and Emergency. This is due to the high number of 'unknown' injury groups amongst attendances at Aintree A&E which makes it difficult to analyse trauma cases separately.

Figure 3 illustrates age group of A&E attendances for each month. The majority of A&E attendances were aged 15 plus. This is probably due to the close proximity of a local children's A&E department (Alder Hey).

Figure 3: Age group of A&E attendances by month, April 2007 to March 2008

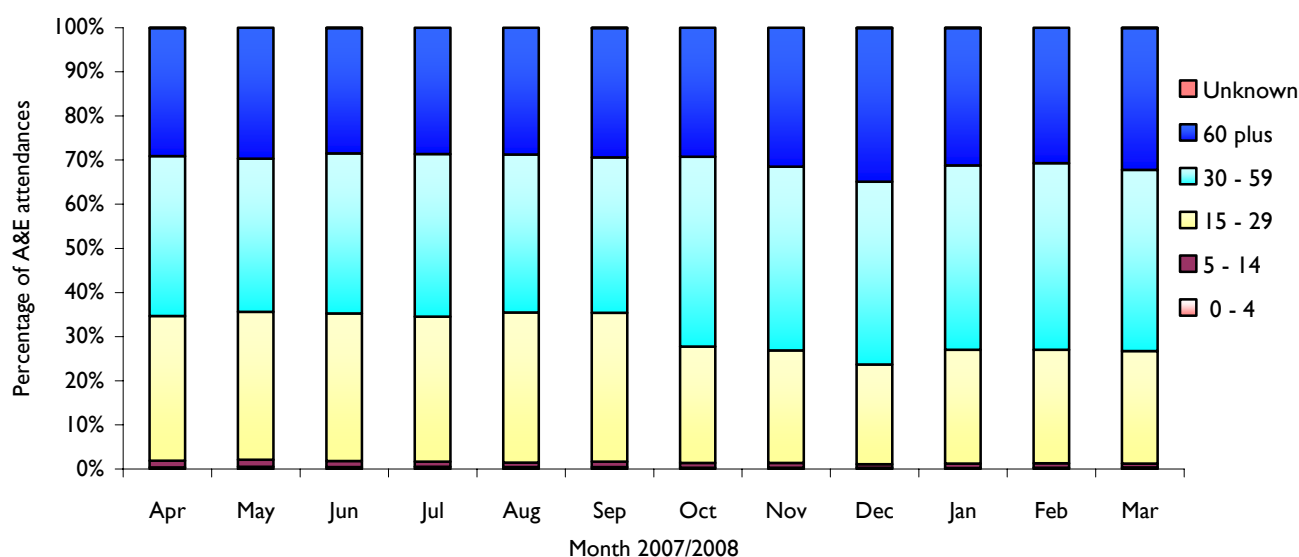


Table 1 details the injury group of A&E attendances. In over three quarters (79%) of attendances, injury group was recorded as other or unknown. This group will include A&E attendances that are not injury related, such as heart attacks. Of those injury groups recorded, falls accounted for 46% of attendances, road traffic accidents 18% and assaults 16%.

Table 1: A&E attendances by injury group, April 2007 to March 2008

Injury Group	Apr	May	Jun	Jul	Aug	Sep	Oct	Nov	Dec	Jan	Feb	Mar	Total	%
Other/Unknown	5722	5841	5637	6022	6049	5582	5961	5345	5449	5714	5379	5639	68340	79
Fall	710	750	730	761	732	671	697	630	771	656	647	709	8464	10
Road Traffic Accident	263	294	312	261	262	258	298	306	258	262	257	276	3307	4
Assault	258	275	247	261	297	250	279	179	218	264	186	267	2981	3
Self	163	164	148	155	159	145	145	140	142	144	177	166	1848	2
Sport	172	151	124	153	164	197	188	187	76	128	159	144	1843	2
Dead	3	1	1	5	3	2	0	2	3	3	2	2	27	0
Firework	1	3	3	0	0	1	3	4	2	2	2	1	22	0
Total	7292	7479	7202	7618	7666	7106	7571	6793	6919	7173	6809	7204	86832	100

Table 2 illustrates the location where assaults occurred for patients presenting with assault-related injuries. The primary locations of assault were a public space (58%) and the home (20%).

Table 2: Assault attendances by location of incident, April 2007 to March 2008

Assault location	Apr	May	Jun	Jul	Aug	Sep	Oct	Nov	Dec	Jan	Feb	Mar	Total	%
Public Space	160	158	150	154	174	156	174	102	120	134	93	150	1725	58
Home	48	50	55	55	57	45	45	35	53	49	47	46	585	20
Other	41	55	24	34	53	37	39	38	33	70	38	60	522	18
Work	8	10	13	13	9	7	15	2	8	6	8	11	110	4
Walton Prison	0	2	2	2	4	1	2	1	1	1	0	0	16	1
School	1	0	1	3	0	3	2	1	1	3	0	0	15	1
Altcourse Prison	0	0	2	0	0	1	2	0	2	1	0	0	8	0
In patient - Aintree	0	0	0	0	0	0	0	0	0	0	0	0	0	0
Total	258	275	247	261	297	250	279	179	218	264	186	267	2981	100

Table 3 shows the location where falls occurred for patients presenting with fall-related injuries. The primary location for falls overall was the home (54%), followed by a public space (32%).

Table 3: Fall attendances by location of incident, April 2007 to March 2008

Fall location	Apr	May	Jun	Jul	Aug	Sep	Oct	Nov	Dec	Jan	Feb	Mar	Total	%
Home	370	388	389	412	393	354	372	329	456	356	345	385	4549	54
Public Space	233	255	252	249	235	216	230	207	215	185	196	217	2690	32
Other	52	60	51	51	67	50	53	51	65	65	60	66	691	8
Work	46	41	32	44	34	48	39	37	33	46	34	36	470	6
School	8	5	6	3	1	2	3	6	1	3	11	3	52	1
In patient - Aintree	1	1	0	0	1	0	0	0	0	0	1	1	5	0
Altcourse Prison	0	0	0	0	1	1	0	0	1	1	0	0	4	0
Walton Prison	0	0	0	2	0	0	0	0	0	0	0	1	3	0
Total	710	750	730	761	732	671	697	630	771	656	647	709	8464	100

Table 4 provides data on the disposal method of A&E attendances at Aintree hospital. Just under half (47%) of A&E attendees were discharged².

Table 4: Disposal method of trauma attendances, April 2007 to March 2008

Discharge Method	Apr	May	Jun	Jul	Aug	Sep	Oct	Nov	Dec	Jan	Feb	Mar	Total	%
Admitted to hospital	2560	2670	2575	2783	2713	2566	2764	2575	2709	2765	2629	2728	32037	37
Discharged	2015	2077	2095	2120	2313	2134	2242	2008	1970	2105	1971	2164	25214	29
Discharged to care of GP	834	881	822	1079	1012	953	850	847	793	826	735	830	10462	12
Discharged to return if condition gets worse	365	391	321	353	304	282	408	252	257	272	381	282	3868	4
Fracture clinic	360	327	333	311	360	298	295	280	292	254	213	288	3611	4
Patient left department	240	195	242	252	240	224	234	156	212	237	230	266	2728	3
A&E clinic	229	229	198	205	203	222	250	200	168	200	204	183	2491	3
Other/unknown	376	375	298	163	177	126	133	111	147	137	123	142	2308	3
Discharged to other hospital	90	93	90	89	82	84	86	81	86	78	66	60	985	1
Own discharge	47	58	51	78	72	58	80	82	78	60	72	53	789	1
Patient did not answer when called for treatment	56	59	61	62	47	40	55	57	63	69	47	71	687	1
Ear/Nose/Throat	31	44	43	34	40	25	26	34	32	43	28	31	411	0
Physiotherapy A&E	0	0	0	0	33	31	57	38	34	44	41	38	316	0
Ophthalmology clinic	33	31	31	29	17	17	31	21	18	19	16	14	277	0
Died in Department	12	7	13	17	13	14	20	18	20	25	16	18	193	0
Maxillary Facial Unit	18	16	12	22	10	10	16	18	10	15	18	10	175	0
Sent to theatre	12	12	6	7	10	16	14	7	13	11	12	12	132	0
Discharged to dentist	4	9	5	12	11	4	6	5	15	8	3	7	89	0
Police custody	6	2	6	2	8	2	4	2	2	4	3	6	47	0
Brought in dead	0	0	0	0	1	0	0	1	0	1	1	1	5	0
A&E GP clinic	3	1	0	0	0	0	0	0	0	0	0	0	4	0
Transfer to ward	1	2	0	0	0	0	0	0	0	0	0	0	3	0
Total	7292	7479	7202	7618	7666	7106	7571	6793	6919	7173	6809	7204	86832	100

Published May 2008

Dan J Hungerford (TIIG Analyst) and Zara Anderson (TIIG Project Lead)

Centre for Public Health, Liverpool John Moores University, Liverpool, L3 2AY

Tel: 0151 231 4417/4505 Email: d.j.hungerford@ljmu.ac.uk or z.a.anderson@ljmu.ac.uk

Website: www.nwpho.org.uk/ait (please note data requests should now be made through the website)

² Includes: Discharged, Discharged to care of GP, Discharged – to return if condition gets worse, Discharged to another hospital, Own discharge and Discharged to dentist.