

This bulletin provides a breakdown of all attendances<sup>i</sup> at Aintree Accident and Emergency (A&E) department between April 2008 and March 2009.

Figure 1 illustrates the number of A&E attendances by month of attendance. March had the highest number of attendances at Aintree A&E department during this time period (n=7,607)

**Figure 1: Total number of A&E attendances by month, April 2008 to March 2009**

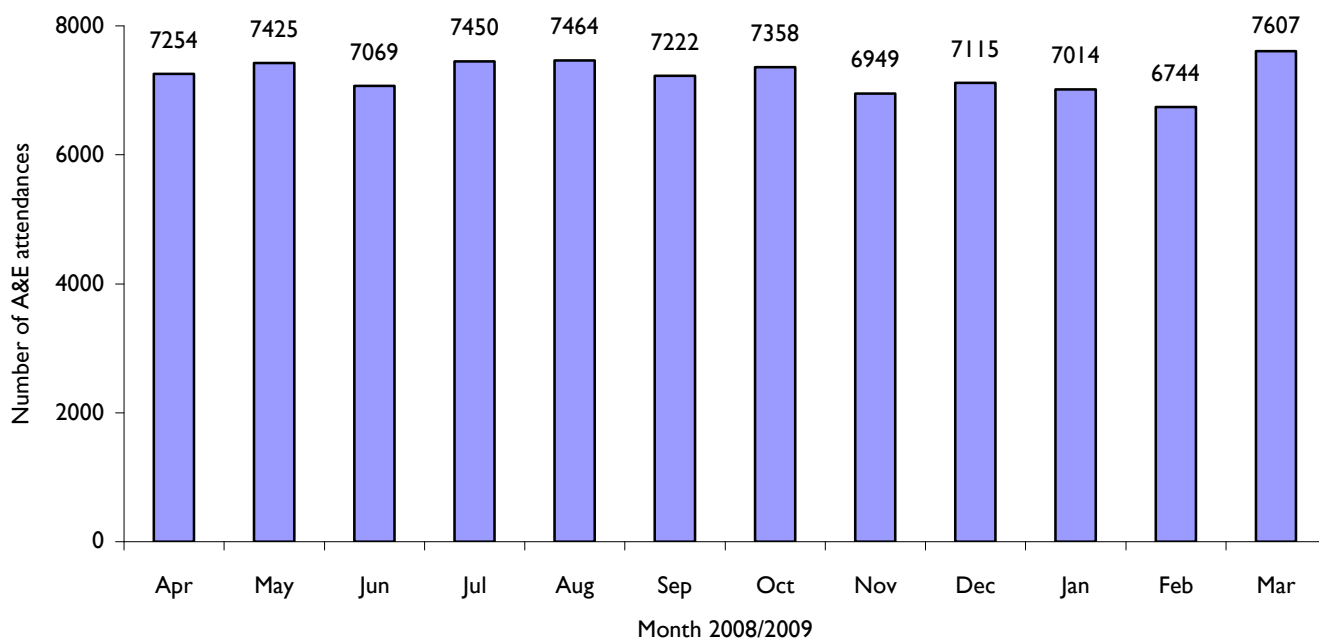


Figure 2 shows A&E attendances by gender. There were more male than female attendances presenting at Aintree A&E department.

**Figure 2: Gender of A&E attendances by month, April 2008 to March 2009**

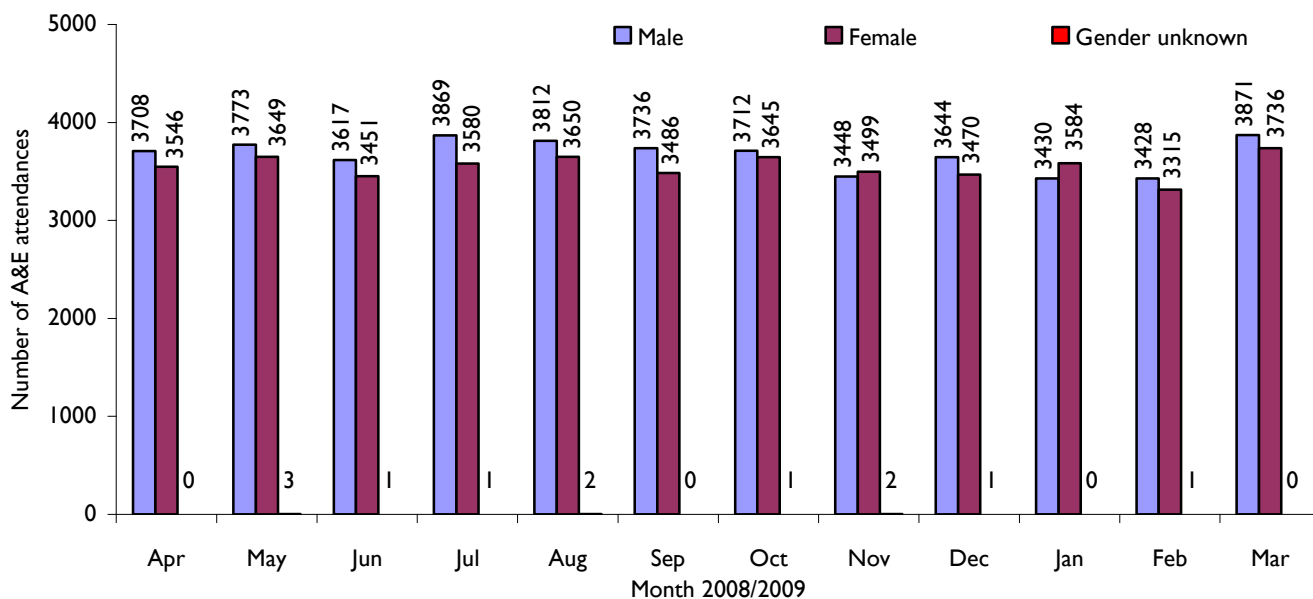


Figure 3 illustrates age group of A&E attendances for each month. The majority of A&E attendances were aged 15 plus. This is probably due to the close proximity of a local children's A&E department (Alder Hey).

**Figure 3: Age group of A&E attendances by month, April 2008 to March 2009**

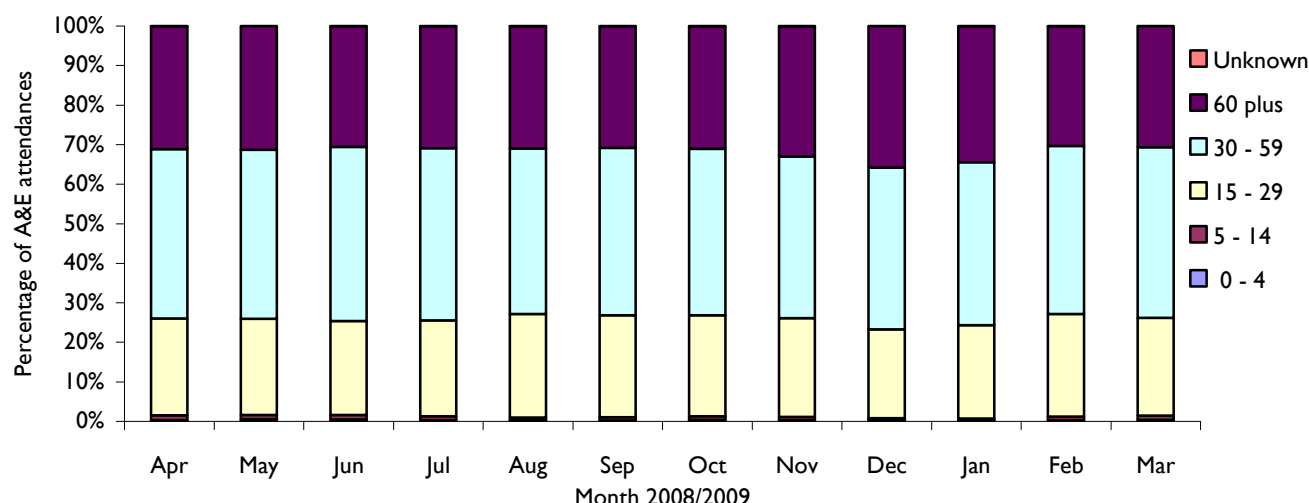


Table 1 details the injury group of A&E attendances. In over three quarters (80%) of attendances, injury group was recorded as other or unknown. This group will include A&E attendances that are not injury related, such as heart attacks. Of those injury groups recorded, falls accounted for 47% of attendances, road traffic accidents 18% and assaults 15%.

**Table 1: A&E attendances by injury group, April 2008 to March 2009<sup>ii</sup>**

| Injury group          | Apr  | May  | Jun  | Jul  | Aug  | Sep  | Oct  | Nov  | Dec  | Jan  | Feb  | Mar  | Total | %   |
|-----------------------|------|------|------|------|------|------|------|------|------|------|------|------|-------|-----|
| Other/unknown         | 5804 | 5916 | 5734 | 5997 | 5980 | 5703 | 5812 | 5552 | 5701 | 5527 | 5372 | 6036 | 69134 | 80  |
| Fall                  | 670  | 694  | 672  | 665  | 665  | 721  | 699  | 659  | 722  | 772  | 659  | 695  | 8293  | 10  |
| Road traffic accident | 272  | 273  | 217  | 255  | 258  | 250  | 301  | 256  | 232  | 243  | 248  | 267  | 3072  | 4   |
| Assault               | 201  | 251  | 195  | 229  | 214  | 231  | 220  | 203  | 230  | 221  | 192  | 241  | 2628  | 3   |
| Sport                 | 172  | 150  | 131  | 143  | 173  | 185  | 163  | 142  | 97   | 130  | 136  | 209  | 1831  | 2   |
| Self                  | 132  | 135  | 105  | 153  | 167  | 126  | 154  | 127  | 127  | 111  | 127  | 150  | 1614  | 2   |
| Firework              | <5   | <5   | <15  | <5   | <10  | <10  | <10  | 5    | <5   | <5   | <5   | <5   | 56    | 0   |
| Dead                  | <5   | <5   | <5   | <5   | <5   | <5   | <5   | 5    | <5   | <10  | <10  | <10  | 43    | 0   |
| Total                 | 7254 | 7425 | 7069 | 7450 | 7464 | 7222 | 7358 | 6949 | 7115 | 7014 | 6744 | 7607 | 86671 | 100 |

Table 2 illustrates the location where assaults occurred for patients presenting with assault-related injuries. The primary locations of assault were a public space (52%), other (22%) and the home (21%).

**Table 2: Assault attendances by location of incident, April 2008 to March 2009**

| Assault location | Apr | May | Jun | Jul | Aug | Sep | Oct | Nov | Dec | Jan | Feb | Mar | Total | %   |
|------------------|-----|-----|-----|-----|-----|-----|-----|-----|-----|-----|-----|-----|-------|-----|
| Public space     | 100 | 127 | 96  | 123 | 125 | 121 | 108 | 100 | 129 | 97  | 108 | 128 | 1362  | 52  |
| Other            | 53  | 52  | 39  | 40  | 40  | 53  | 50  | 54  | 45  | 58  | 35  | 62  | 581   | 22  |
| Home             | 38  | 55  | 49  | 56  | 41  | 47  | 48  | 45  | 47  | 57  | 37  | 37  | 557   | 21  |
| Work             | <10 | 14  | <10 | <10 | <10 | <10 | 11  | <5  | <10 | <10 | <10 | <10 | 92    | 4   |
| Walton Prison    | <5  | <5  | <5  | <5  | <5  | <5  | <5  | <5  | <5  | <5  | <5  | <5  | 17    | 1   |
| School           | <5  | <5  | <5  | <5  | <5  | <5  | <5  | <5  | <5  | <5  | <5  | <5  | 13    | 0   |
| Altcourse Prison | <5  | <5  | <5  | <5  | <5  | <5  | <5  | <5  | <5  | <5  | <5  | <5  | 6     | 0   |
| Total            | 201 | 251 | 195 | 229 | 214 | 231 | 220 | 203 | 230 | 221 | 192 | 241 | 2628  | 100 |

Table 3 provides data on whether an assault attendee had consumed alcohol within three hours prior to their attack. Where data was collected 59% of assault attendances had consumed alcohol prior to attack.

**Table 3: Number of assault attendances who had consumed alcohol within three hours prior to their attack, April 2008 to March 2009**

| Assault Drink | Apr | May | Jun | Jul | Aug | Sep | Oct | Nov | Dec | Jan | Feb | Mar | Total | %   |
|---------------|-----|-----|-----|-----|-----|-----|-----|-----|-----|-----|-----|-----|-------|-----|
| Unknown       | 171 | 174 | 130 | 150 | 143 | 153 | 145 | 144 | 159 | 167 | 142 | 182 | 1860  | 71  |
| No            | 9   | 29  | 30  | 36  | 34  | 27  | 35  | 23  | 26  | 27  | 15  | 21  | 312   | 12  |
| Yes           | 21  | 48  | 35  | 43  | 37  | 51  | 40  | 36  | 45  | 27  | 35  | 38  | 456   | 17  |
| Total         | 201 | 251 | 195 | 229 | 214 | 231 | 220 | 203 | 230 | 221 | 192 | 241 | 2628  | 100 |

Table 4 shows the location where falls occurred for patients presenting with fall-related injuries. The primary location for falls was the home (54%), followed by a public space (29%).

**Table 4: Fall attendances by location of incident, April 2008 to March 2009**

| Fall location        | Apr | May | Jun | Jul | Aug | Sep | Oct | Nov | Dec | Jan | Feb | Mar | Total | %   |
|----------------------|-----|-----|-----|-----|-----|-----|-----|-----|-----|-----|-----|-----|-------|-----|
| Home                 | 362 | 369 | 401 | 360 | 368 | 374 | 350 | 362 | 391 | 387 | 325 | 393 | 4442  | 54  |
| Public space         | 191 | 208 | 164 | 196 | 174 | 194 | 204 | 176 | 215 | 257 | 227 | 185 | 2391  | 29  |
| Other                | 63  | 83  | 69  | 70  | 88  | 109 | 99  | 76  | 71  | 90  | 72  | 80  | 970   | 12  |
| Work                 | 46  | 29  | 33  | 33  | 32  | 36  | 42  | 40  | 41  | 28  | 28  | 30  | 418   | 5   |
| School               | 8   | <5  | 5   | 5   | <5  | 7   | <5  | 5   | <5  | 5   | 7   | <5  | 57    | 1   |
| In patient - Aintree | <5  | <5  | <5  | <5  | <5  | <5  | <5  | <5  | <5  | <5  | <5  | <5  | <10   | 0   |
| Altcourse Prison     | <5  | <5  | <5  | <5  | <5  | <5  | <5  | <5  | <5  | <5  | <5  | <5  | <10   | 0   |
| Walton Prison        | <5  | <5  | <5  | <5  | <5  | <5  | <5  | <5  | <5  | <5  | <5  | <5  | <10   | 0   |
| Total                | 670 | 694 | 672 | 665 | 665 | 721 | 699 | 659 | 722 | 772 | 659 | 695 | 8293  | 100 |

Table 5 provides data on the discharge method of A&E attendances at Aintree hospital. Just under half (48%) of A&E attendees were discharged<sup>iii</sup>.

**Table 5: Discharge method of trauma attendances, April 2008 to March 2009**

| Discharge method                                 | Apr  | May  | Jun  | Jul  | Aug  | Sep  | Oct  | Nov  | Dec  | Jan  | Feb  | Mar  | Total | %   |
|--|------|------|------|------|------|------|------|------|------|------|------|------|-------|-----|
| Admitted to hospital                             | 2673 | 2594 | 2555 | 2643 | 2677 | 2664 | 2821 | 2646 | 2811 | 2741 | 2582 | 2767 | 32174 | 37  |
| Discharged                                       | 2193 | 2587 | 2301 | 2348 | 2375 | 2088 | 2280 | 2015 | 2030 | 1923 | 1806 | 2204 | 26150 | 30  |
| Discharged to care of GP                         | 762  | 742  | 790  | 894  | 747  | 897  | 777  | 796  | 728  | 688  | 753  | 701  | 9275  | 11  |
| Discharged to return if condition gets worse     | 392  | 284  | 247  | 300  | 407  | 319  | 279  | 335  | 291  | 409  | 353  | 509  | 4125  | 5   |
| Fracture clinic                                  | 266  | 295  | 274  | 325  | 312  | 332  | 294  | 259  | 275  | 280  | 282  | 318  | 3512  | 4   |
| A&E clinic                                       | 230  | 211  | 238  | 193  | 238  | 275  | 226  | 185  | 212  | 224  | 228  | 248  | 2708  | 3   |
| Patient left department                          | 228  | 258  | 171  | 236  | 215  | 179  | 189  | 212  | 229  | 193  | 203  | 232  | 2545  | 3   |
| Other/unknown                                    | 142  | 103  | 160  | 150  | 149  | 114  | 132  | 121  | 138  | 153  | 139  | 190  | 1691  | 2   |
| Discharged to other hospital                     | 77   | 96   | 101  | 94   | 87   | 73   | 85   | 77   | 69   | 77   | 91   | 86   | 1013  | 1   |
| Physiotherapy A&E                                | 58   | 63   | 60   | 62   | 67   | 69   | 61   | 75   | 73   | 81   | 75   | 98   | 842   | 1   |
| Own discharge                                    | 68   | 45   | 50   | 56   | 49   | 61   | 69   | 58   | 74   | 79   | 65   | 65   | 739   | 1   |
| Patient did not answer when called for treatment | 56   | 52   | 36   | 36   | 32   | 38   | 40   | 59   | 59   | 35   | 53   | 59   | 555   | 1   |
| Ear/nose/throat                                  | 34   | 31   | 28   | 39   | 38   | 42   | 41   | 42   | 47   | 53   | 41   | 54   | 490   | 1   |
| Ophthalmology clinic                             | 20   | 19   | 24   | 25   | 27   | 25   | 24   | 16   | 26   | 17   | 26   | 31   | 280   | 0   |
| Died in department                               | 16   | 17   | 7    | 16   | 15   | 13   | 12   | 25   | 21   | 23   | 15   | 14   | 194   | 0   |
| Maxillary Facial Unit                            | 17   | 10   | 14   | 14   | 13   | 16   | 17   | 7    | 11   | 15   | 14   | 20   | 168   | 0   |
| Sent to theatre                                  | 10   | 8    | 9    | 5    | 8    | 10   | <5   | 11   | 9    | 12   | 8    | <5   | 95    | 0   |
| Discharged to dentist                            | 9    | 6    | <5   | 6    | <5   | <5   | 6    | 7    | <5   | <5   | <5   | <5   | 55    | 0   |
| Police custody                                   | <5   | <5   | <5   | 5    | <5   | <5   | <5   | <5   | 5    | 7    | 6    | <5   | 46    | 0   |
| Falls clinic                                     | <5   | <5   | <5   | <5   | <5   | <5   | <5   | <5   | <5   | <5   | <5   | <5   | 5     | 0   |
| Brought in dead                                  | <5   | <5   | <5   | <5   | <5   | <5   | <5   | <5   | <5   | <5   | <5   | <5   | <5    | 0   |
| Transfer to ward                                 | <5   | <5   | <5   | <5   | <5   | <5   | <5   | <5   | <5   | <5   | <5   | <5   | <5    | 0   |
| Xray tomorrow                                    | <5   | <5   | <5   | <5   | <5   | <5   | <5   | <5   | <5   | <5   | <5   | <5   | <5    | 0   |
| Total  | 7254 | 7425 | 7069 | 7450 | 7464 | 7222 | 7358 | 6949 | 7115 | 7014 | 6744 | 7607 | 86671 | 100 |

Published June 2009

Dan Hungerford (TIIG Analyst)

Centre for Public Health, Research Directorate, Liverpool John Moores University, Liverpool, L3 2AJ

Tel: 0151 231 8728 Email: [d.j.hungerford@ljmu.ac.uk](mailto:d.j.hungerford@ljmu.ac.uk)

Website: [www.tiig.info](http://www.tiig.info) (please note data requests should be made through the website)

<sup>i</sup> For other A&E departments, TIIG reports on trauma incidents only. However, this report includes all attendances at Aintree A&E department. This is due to the high number of 'unknown' injury groups amongst attendances at Aintree A&E which makes it difficult to analyse trauma cases separately.

<sup>ii</sup> Please note that all numbers less than five have been suppressed in line with patient confidentiality and if there is only one number less than five in a category then two numbers will be suppressed at the next level (e.g. <10) in order to prevent back calculations from totals.

<sup>iii</sup> Includes: discharged, discharged to care of GP, discharged – to return if condition gets worse, discharged to another hospital, own discharge and discharged to dentist.