

## University Hospital Aintree Emergency Department Monthly Bulletin: August 2009 to July 2010

This bulletin provides a breakdown of all attendances<sup>1</sup> at University Hospital Aintree Emergency Department (ED) between August 2009 and July 2010. During this period there were 87,184 attendances to University Hospital Aintree ED and July had the highest number of attendances (n=7,785).

There were a similar number of male and female attendances to Aintree ED. Figure 2 illustrates age group of ED attendances for each month. Nearly all (99%) ED attendances were aged 15 plus. This is probably due to the close proximity of a local children's ED (Alder Hey).

In four-fifths (80%) of attendances, injury group was recorded as other/unknown. This group includes ED attendances that are not injury related, such as heart attacks. Of those injury groups recorded, falls accounted for 10% of attendances, and the primary location for falls was the home (51%) (Tables 1 and 2). Just over a third (36%) of ED attendees were admitted to hospital (Table 3).

### Assault questionnaire

In addition to the information presented above assault attendees at University Hospital Aintree are asked by reception staff whether they would be

willing to answer more detailed questions about their assault. This includes information such as the specific location of assault (e.g. pub name/street), which is provided by TIIG to local agencies such as Community Safety Partnerships (CSPs), in a separate report to the one produced here. For further information on this report please contact the authors (details can be found at the end of the report). A general summary of the assault questionnaire is provided below.

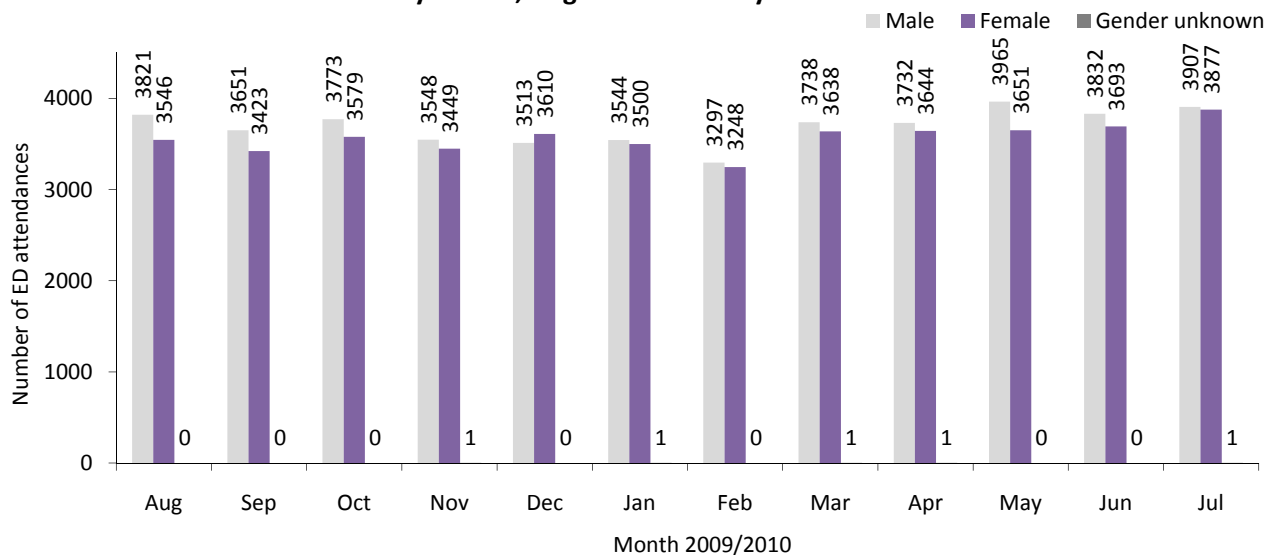
During August 2009 to July 2010 there were 2,716 assault attendances to University Hospital Aintree ED. Assault attendees presenting at University Hospital Aintree ED between August 2009 and July 2010 were primarily male (75%) and aged 15 - 29 years (56%). Of those known<sup>2</sup>, 52% had consumed alcohol within three hours prior to their attack (Table 4) and almost half (44%) of assaults had occurred on the street (Table 5).

Over six in ten (64%) attendances stated that they had been assaulted by a stranger (Table 6) and 11% had previously been assaulted by their attacker (Table 7). Table 8 shows method of attack. Of those known, 69% were attacked with a body part, such as a fist, 13% with a blunt object, 4% with a bottle and 3% with a knife.

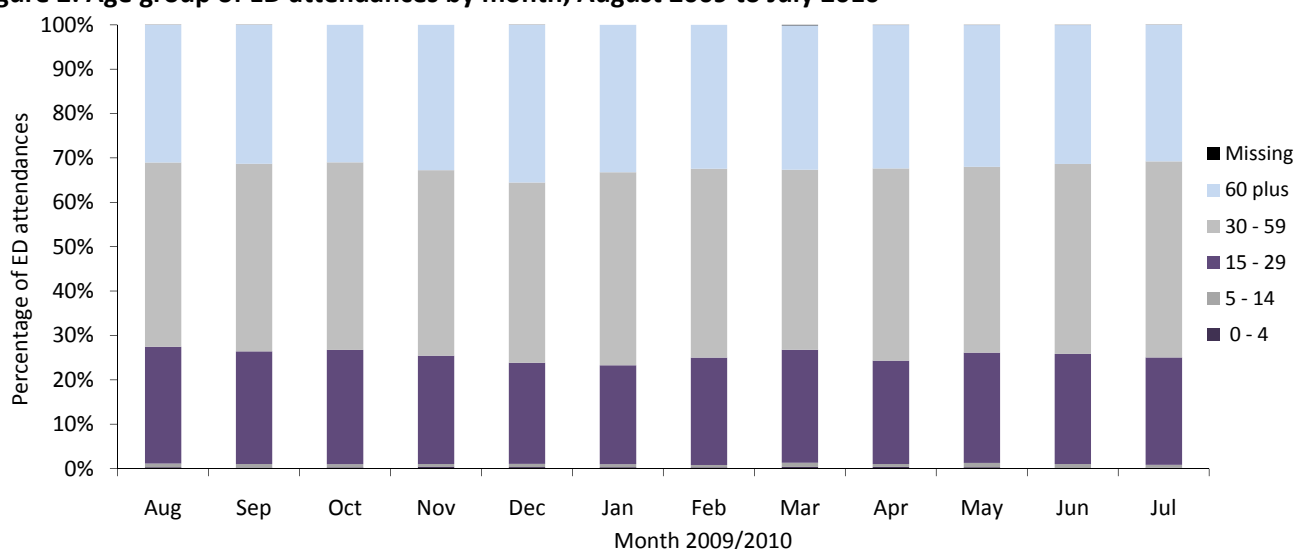
<sup>1</sup> For other EDs, TIIG reports on injuries only. However, this report includes all attendances at Aintree ED. This is due to the high number of 'unknown' injury groups amongst attendances at Aintree ED which makes it difficult to analyse injury attendances separately.

<sup>2</sup> Although a patient may complete the assault patient questionnaire data may not be provided for each question as the patient can refuse or be unable to answer particular questions. Data provided in the following analyses represent those patients who completed each question, respectively.

**Figure 1: Gender of ED attendances by month, August 2009 to July 2010**



**Figure 2: Age group of ED attendances by month, August 2009 to July 2010**



**Table 1: ED attendances by injury group and month, August 2009 to July 2010<sup>3</sup>**

Injury group	Aug	Sep	Oct	Nov	Dec	Jan	Feb	Mar	Apr	May	Jun	Jul	Total	%
Other/unknown	5813	5615	5989	5603	5498	5351	5164	5849	5923	6062	6114	6358	69339	80
Fall	683	684	661	655	940	1067	634	738	740	752	720	692	8966	10
Assault	301	224	218	192	224	194	215	223	242	250	237	196	2716	3
Road traffic accident	234	229	208	255	242	229	262	231	175	213	206	205	2689	3
Sports injury	160	190	176	156	102	79	144	188	179	185	115	170	1844	2
Deliberate self-harm	170	129	97	131	114	122	125	147	116	146	127	154	1578	2
Firework	***	***	***	***	***	***	***	***	***	***	***	***	35	0
Brought in dead	***	***	***	***	***	***	***	***	***	***	***	***	17	0
<b>Total</b>	<b>7367</b>	<b>7074</b>	<b>7352</b>	<b>6998</b>	<b>7123</b>	<b>7045</b>	<b>6545</b>	<b>7377</b>	<b>7377</b>	<b>7616</b>	<b>7525</b>	<b>7785</b>	<b>87184</b>	<b>100</b>

**Table 2: Fall attendances by location of incident and month, August 2009 to July 2010**

Fall location	Aug	Sep	Oct	Nov	Dec	Jan	Feb	Mar	Apr	May	Jun	Jul	Total	%
Home	363	359	360	365	411	393	348	388	376	403	399	371	4536	51
Public space	217	211	191	183	396	505	201	228	254	226	214	202	3028	34
Other	78	76	69	66	92	108	55	78	86	88	72	89	957	11
Work	24	36	38	37	38	52	27	33	21	28	32	28	394	4
School	***	***	***	***	***	9	***	8	***	5	***	***	40	0
Walton Prison	***	***	***	***	***	***	***	***	***	***	***	***	6	0
Altcourse Prison	***	***	***	***	***	***	***	***	***	***	***	***	***	0
In patient – Aintree Hospital	***	***	***	***	***	***	***	***	***	***	***	***	***	0
<b>Total</b>	<b>683</b>	<b>684</b>	<b>661</b>	<b>655</b>	<b>940</b>	<b>1067</b>	<b>634</b>	<b>738</b>	<b>740</b>	<b>752</b>	<b>720</b>	<b>692</b>	<b>8966</b>	<b>100</b>

**Table 3: Discharge method of ED attendances by month, August 2009 to July 2010**

Discharge method	Aug	Sep	Oct	Nov	Dec	Jan	Feb	Mar	Apr	May	Jun	Jul	Total	%
Admitted to hospital	2623	2625	2730	2626	2642	2615	2445	2790	2633	2587	2520	2668	31504	36
Discharged	2186	1942	2107	1958	2007	2023	1762	2150	2248	2179	2136	2189	24887	29
Discharged to care of GP	681	783	767	815	742	667	777	720	666	878	854	960	9310	11
Discharged - return if condition worsens	527	423	454	316	440	409	351	414	423	456	424	396	5033	6
Fracture clinic	321	338	303	295	345	355	271	282	336	344	309	320	3819	4
Patient left department	201	201	222	197	160	187	205	201	216	252	288	333	2663	3
Other/unknown	202	176	147	194	229	259	228	221	209	256	219	226	2566	3
ED clinic	196	186	196	198	173	147	127	155	201	195	253	212	2239	3
Discharged to other hospital	106	82	104	90	72	72	84	95	86	102	98	77	1068	1
Physiotherapy ED	69	85	73	84	73	87	73	99	107	94	97	88	1029	1
Own discharge	76	46	55	59	73	68	67	79	74	82	90	94	863	1
Patient – no answer when called for	44	59	58	41	38	39	40	51	53	59	116	81	679	1
Ear/nose/throat clinic	40	42	48	42	47	37	44	43	49	41	31	40	504	1
Ophthalmology clinic	24	25	25	22	18	20	13	19	21	25	32	36	280	0
Died in department	17	17	23	19	24	27	16	15	17	13	13	14	215	0
Maxillary facial unit	18	14	12	13	13	15	12	15	14	15	11	14	166	0
Discharged to dentist	12	15	13	14	11	***	13	10	9	14	10	13	138	0
Sent to theatre	15	7	7	9	6	8	11	7	9	11	11	16	117	0
Police custody	8	5	6	5	6	5	6	6	6	12	10	8	83	0
Transferred to ward	***	***	***	***	***	***	***	5	***	***	***	***	13	0
Brought in dead	***	***	***	***	***	***	***	***	***	***	***	***	7	0
X-ray tomorrow	***	***	***	***	***	***	***	***	***	***	***	***	***	0
Falls clinic	***	***	***	***	***	***	***	***	***	***	***	***	***	0
<b>Total</b>	<b>7367</b>	<b>7074</b>	<b>7352</b>	<b>6998</b>	<b>7123</b>	<b>7045</b>	<b>6545</b>	<b>7377</b>	<b>7377</b>	<b>7616</b>	<b>7525</b>	<b>7785</b>	<b>87184</b>	<b>100</b>

**Table 4: Assault attendances by whether they had consumed alcohol within three hours prior to the assault and month, August 2009 to July 2010**

Drank alcohol	Aug	Sep	Oct	Nov	Dec	Jan	Feb	Mar	Apr	May	Jun	Jul	Total	%
Unknown	236	184	152	122	156	109	122	133	141	136	140	134	1765	65
No	33	24	34	34	22	38	40	48	50	60	45	29	457	17
Yes	32	16	32	36	46	47	53	42	51	54	52	33	494	18
<b>Total</b>	<b>301</b>	<b>224</b>	<b>218</b>	<b>192</b>	<b>224</b>	<b>194</b>	<b>215</b>	<b>223</b>	<b>242</b>	<b>250</b>	<b>237</b>	<b>196</b>	<b>2716</b>	<b>100</b>

**Table 5: Assault attendances by location of incident and month, August 2009 to July 2010**

Assault location	Aug	Sep	Oct	Nov	Dec	Jan	Feb	Mar	Apr	May	Jun	Jul	Total	%
Unknown	233	186	149	118	153	108	118	134	136	139	142	135	1751	64
Street	37	19	33	25	30	31	34	49	42	46	48	33	427	16
Your home	8	7	9	8	7	18	10	10	16	16	19	8	136	5
Other	7	***	10	12	9	7	12	7	11	12	11	5	107	4
Bar/pub	***	***	8	9	14	12	16	***	13	10	8	***	101	4
Other home	***	***	***	***	***	10	10	***	8	6	***	***	59	2
Workplace	7	***	***	9	***	***	6	6	***	10	***	***	55	2
Public place	***	***	***	6	***	***	***	5	7	***	***	***	36	1
Club	***	***	***	***	***	***	***	***	***	***	***	***	24	1
Public transport	***	***	***	***	***	***	***	***	***	***	***	***	12	0
School	***	***	***	***	***	***	***	***	***	***	***	***	8	0
<b>Total</b>	<b>301</b>	<b>224</b>	<b>218</b>	<b>192</b>	<b>224</b>	<b>194</b>	<b>215</b>	<b>223</b>	<b>242</b>	<b>250</b>	<b>237</b>	<b>196</b>	<b>2716</b>	<b>100</b>

**Table 6: Assault attendances by relationship with attacker and month, August 2009 to July 2010**

Relationship	Aug	Sep	Oct	Nov	Dec	Jan	Feb	Mar	Apr	May	Jun	Jul	Total	%
Unknown	232	180	153	127	155	115	122	136	141	166	159	149	1835	68
Stranger	47	22	48	40	46	41	60	58	75	47	51	29	564	21
Acquaintance/friend	9	8	7	8	13	16	12	14	8	19	14	8	136	5
Partner	6	***	***	***	***	9	7	***	5	6	5	***	55	2
Family member	***	***	***	***	***	6	5	***	***	***	***	5	42	2
Work client/customer	***	***	***	6	***	***	5	***	5	***	***	***	36	1
Ex-Partner	***	***	***	***	***	***	***	***	***	6	***	***	27	1
Bouncer	***	***	***	***	***	***	***	***	***	***	***	***	***	1
Work mate/colleague	***	***	***	***	***	***	***	***	***	***	***	***	***	0
<b>Total</b>	<b>301</b>	<b>224</b>	<b>218</b>	<b>192</b>	<b>224</b>	<b>194</b>	<b>215</b>	<b>223</b>	<b>242</b>	<b>250</b>	<b>237</b>	<b>196</b>	<b>2716</b>	<b>100</b>

**Table 7: Assault attendances by whether they have been previously assaulted by the perpetrator, August 2009 to July 2010**

Previously assaulted by attacker	Aug	Sep	Oct	Nov	Dec	Jan	Feb	Mar	Apr	May	Jun	Jul	Total	%
Unknown	230	179	151	126	155	110	120	137	141	161	155	148	1813	67
No	64	37	61	59	64	71	87	74	93	80	71	41	802	30
Yes	7	8	6	7	5	13	8	12	8	9	11	7	101	4
<b>Total</b>	<b>301</b>	<b>224</b>	<b>218</b>	<b>192</b>	<b>224</b>	<b>194</b>	<b>215</b>	<b>223</b>	<b>242</b>	<b>250</b>	<b>237</b>	<b>196</b>	<b>2716</b>	<b>100</b>

**Table 8: Assault attendances by method of attack and month, August 2009 to July 2010**

Weapon	Aug	Sep	Oct	Nov	Dec	Jan	Feb	Mar	Apr	May	Jun	Jul	Total	%
Unknown	233	179	156	135	159	116	125	145	150	168	164	153	1883	69
Body part	46	32	37	45	40	49	59	65	68	56	48	27	572	21
Blunt object	9	6	6	***	6	12	19	6	11	9	13	9	108	4
Other	***	***	***	10	***	5	5	9	9	6	7	5	66	2
Bottle	***	***	7	***	***	5	5	***	***	***	***	***	37	1
Knife	***	***	***	***	***	***	***	***	***	***	***	***	28	1
Glass	***	***	***	***	6	***	***	***	***	***	***	***	20	1
Firearm	***	***	***	***	***	***	***	***	***	***	***	***	***	0
<b>Total</b>	<b>301</b>	<b>224</b>	<b>218</b>	<b>192</b>	<b>224</b>	<b>194</b>	<b>215</b>	<b>223</b>	<b>242</b>	<b>250</b>	<b>237</b>	<b>196</b>	<b>2716</b>	<b>100</b>

Published September 2010  
 Dan Hungerford (North West TIIG Analyst)  
 Centre for Public Health, Liverpool John Moores University, 3<sup>rd</sup> Floor Henry Cotton Campus,  
 15-21 Webster Street, Liverpool, L3 2ET  
 Tel: 0151 231 4500 Email: [d.j.hungerford@ljmu.ac.uk](mailto:d.j.hungerford@ljmu.ac.uk)  
 Website: [www.tiig.info](http://www.tiig.info) (please note data requests should be made through the website)

<sup>3</sup> \*\*\*Please note that all numbers less than five have been suppressed in line with patient confidentiality and if there is only one number less than five in a category then two numbers will be suppressed at the next level in order to prevent back calculations from totals.