

## University Hospital Aintree Emergency Department Monthly Bulletin: August 2011 to July 2012

This bulletin provides a breakdown of all attendances<sup>1</sup> at University Hospital Aintree Emergency Department (ED) between August 2011 and July 2012.

From August 2011 to July 2012, there were 84,912 attendances to University Hospital Aintree ED and May had the highest number of attendances (n=7,334).

There were a similar number of male and female attendances to Aintree ED (**Figure 1**). **Figure 2** illustrates age group of ED attendances for each month. Over two-fifths (42%) were aged 30-59 years and almost all (99%) ED attendances were aged 15 plus. This is probably due to the close proximity of a local children's ED (Alder Hey).

In 83% of attendances, injury group was recorded as other/unknown. This group includes ED attendances that are not injury related, such as heart attacks. Of those injury groups recorded, falls accounted for 9% of attendances, assaults accounted for 2% of all injury attendances, 2% road traffic collisions and 2% sports injuries (**Table 1**).

**Table 2** shows the location of the incident of attendances. Over three quarters (76%) of incidents took place in the home, 11% in a public space and 4% in work. The primary location for falls was the home (58%) (**Table 3**) and almost half (48%) of assaults were located in a public space (**Table 4**).

**Table 5** shows the arrival method of attendances at University Hospital Aintree ED. Almost half (48%) used private transport whilst 36% arrived by an ambulance.

The disposal of a patient can give an indication of the severity of injuries sustained. Almost four in ten (37%) of ED attendees were admitted to hospital while just over three in ten (31%) were discharged. (**Table 6**).

### Assaults

During August 2011 to July 2012 there were 2,103 assault attendances to University Hospital Aintree ED. Almost three-quarters (74%) of assault attendees presenting at University Hospital Aintree ED between August 2011 and July 2012 were male and over half (53%) were aged 15-29 years.

<sup>1</sup> For other EDs, TIIG reports on injuries only. However, this report includes all attendances at Aintree ED. This is due to the high number of 'unknown' injury groups amongst attendances at Aintree ED which makes it difficult to analyse injury attendances separately.

Figure 1: Gender of ED attendances by month, August 2011 to July 2012

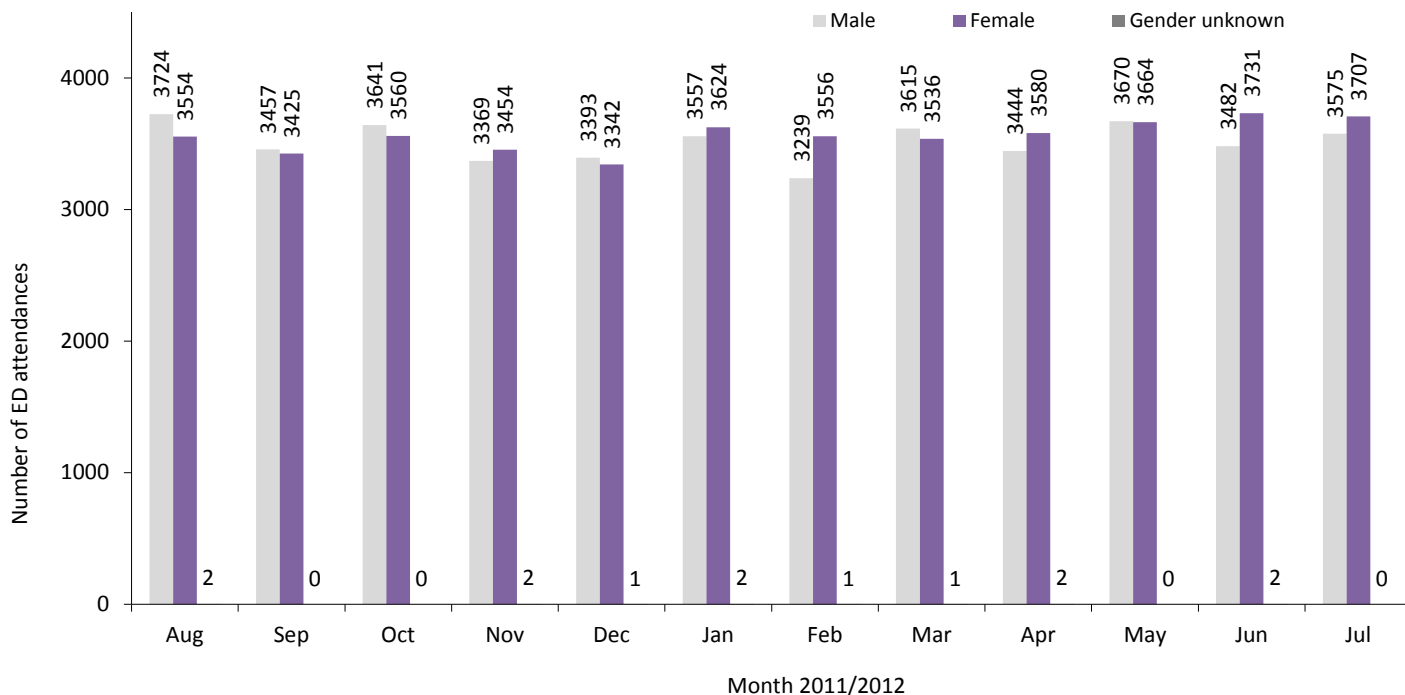


Figure 2: Age group of ED attendances by month, August 2011 to July 2012

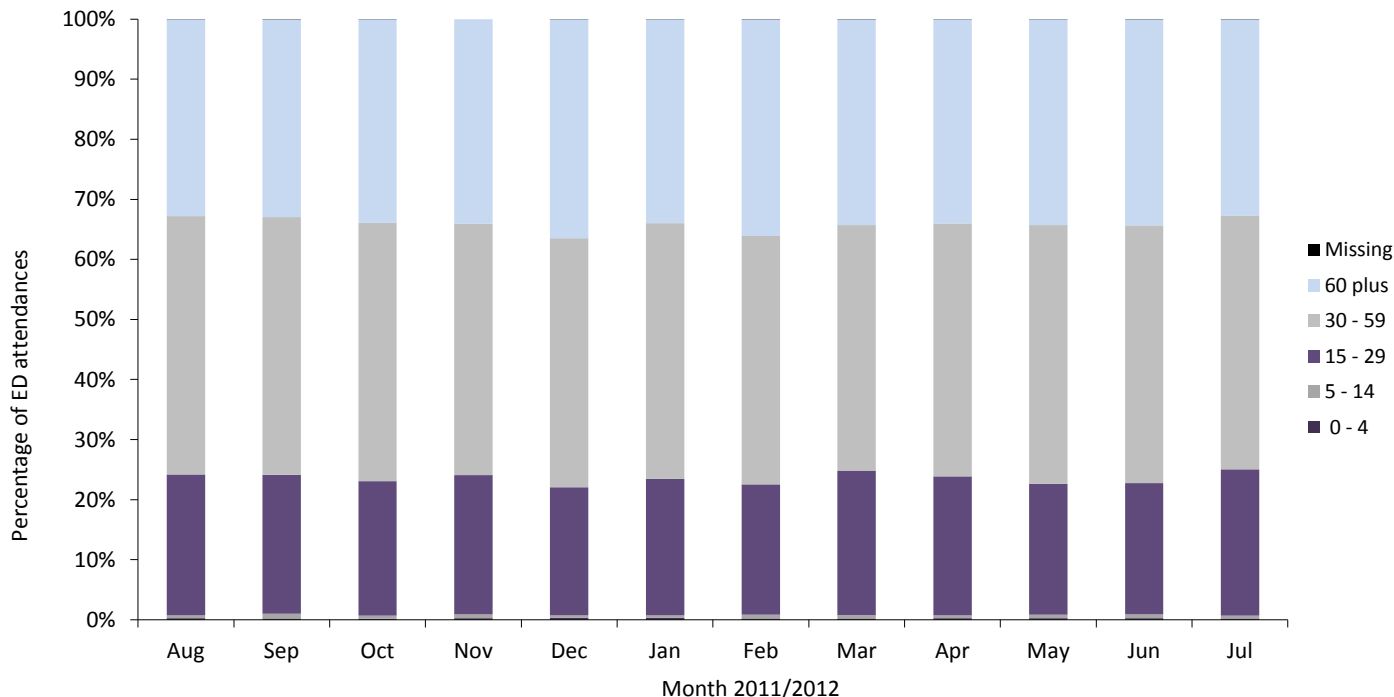


Table 1: ED attendances by injury group and month, August 2011 to July 2012<sup>2</sup>

Injury group	Aug	Sep	Oct	Nov	Dec	Jan	Feb	Mar	Apr	May	Jun	Jul	Total	%
Other/unknown	5988	5673	5904	5632	5525	5969	5574	5934	5855	6132	5914	5984	70084	83
Fall	667	593	634	619	690	647	742	617	614	644	727	731	7925	9
Assault	223	152	218	159	173	187	156	172	174	171	157	161	2103	2
Road traffic collision	142	197	187	170	166	182	123	149	162	164	173	160	1975	2
Sports injury	133	139	139	144	74	105	101	172	108	109	87	115	1426	2
Deliberate self-harm	116	123	111	89	99	76	92	102	105	99	144	123	1279	2
Firework	<12	<6	<9	<13	<9	<18	<8	***	<9	<15	<12	<9	112	0
Brought in dead	***	***	***	***	***	***	***	***	***	***	***	***	8	0
<b>Total</b>	<b>7280</b>	<b>6882</b>	<b>7201</b>	<b>6825</b>	<b>6736</b>	<b>7183</b>	<b>6796</b>	<b>7152</b>	<b>7026</b>	<b>7334</b>	<b>7215</b>	<b>7282</b>	<b>84912</b>	<b>100</b>

<sup>2</sup>Please note that all numbers less than five have been suppressed in line with patient confidentiality and if there is only one number less than five in a category then two numbers will be suppressed at the next level in order to prevent back calculations from totals.

**Table 2: ED attendances by location of incident and month, August 2011 to July 2012<sup>2</sup>**

Location	Aug	Sep	Oct	Nov	Dec	Jan	Feb	Mar	Apr	May	Jun	Jul	Total	%
Home	5708	5283	5483	4980	5122	5488	5141	5437	5325	5582	5358	5369	64276	76
Public space	696	780	820	779	752	743	736	772	799	643	777	801	9098	11
Other	605	491	605	725	604	631	619	623	611	786	761	792	7853	9
Work	245	289	247	303	226	288	251	287	248	282	276	292	3234	4
School	***	15	18	17	11	10	28	13	17	<22	8	***	162	0
Walton Prison	15	15	15	10	12	6	6	8	8	8	13	12	128	0
Altcourse Prison	***	<6	6	6	<6	11	8	6	11	10	16	9	96	0
In patient – Aintree ED	7	***	7	5	***	6	7	6	7	***	6	***	65	0
<b>Total</b>	<b>7280</b>	<b>6882</b>	<b>7201</b>	<b>6825</b>	<b>6736</b>	<b>7183</b>	<b>6796</b>	<b>7152</b>	<b>7026</b>	<b>7334</b>	<b>7215</b>	<b>7282</b>	<b>84912</b>	<b>100</b>

**Table 3: Fall attendances by location of incident and month, August 2011 to July 2012<sup>2</sup>**

Fall location	Aug	Sep	Oct	Nov	Dec	Jan	Feb	Mar	Apr	May	Jun	Jul	Total	%
Home	418	350	387	358	391	368	410	352	370	400	424	386	4614	58
Public space	175	171	172	166	224	191	240	183	177	148	191	208	2246	28
Other	50	37	41	55	51	52	55	52	46	62	84	97	682	9
Work	23	30	29	35	21	33	30	27	16	32	25	38	339	4
School	***	***	***	***	***	***	5	***	***	***	***	***	30	0
Walton Prison	***	***	***	***	***	***	***	***	***	***	***	***	8	0
In patient – Aintree ED	***	***	***	***	***	***	***	***	***	***	***	***	***	0
Altcourse Prison	***	***	***	***	***	***	***	***	***	***	***	***	***	0
<b>Total</b>	<b>667</b>	<b>593</b>	<b>634</b>	<b>619</b>	<b>690</b>	<b>647</b>	<b>742</b>	<b>617</b>	<b>614</b>	<b>644</b>	<b>727</b>	<b>731</b>	<b>7925</b>	<b>100</b>

**Table 4: Assault attendances by location of incident and month, August 2011 to July 2012<sup>2</sup>**

Assault location	Aug	Sep	Oct	Nov	Dec	Jan	Feb	Mar	Apr	May	Jun	Jul	Total	%
Public space	102	78	110	72	96	95	77	79	100	66	70	70	1015	48
Other	38	35	48	35	39	53	37	35	42	49	48	42	501	24
Home	65	33	53	43	31	24	30	46	27	40	26	42	460	22
Work	14	***	***	8	***	15	7	9	***	15	10	6	99	5
School	***	***	***	***	***	***	***	***	***	***	***	***	12	1
Walton Prison	***	***	***	***	***	***	***	***	***	***	***	***	11	1
Altcourse Prison	***	***	***	***	***	***	***	***	***	***	***	***	<6	0
In patient – Aintree ED	***	***	***	***	***	***	***	***	***	***	***	***	***	0
<b>Total</b>	<b>223</b>	<b>152</b>	<b>218</b>	<b>159</b>	<b>173</b>	<b>187</b>	<b>156</b>	<b>172</b>	<b>174</b>	<b>171</b>	<b>157</b>	<b>161</b>	<b>2103</b>	<b>100</b>

**Table 5: ED attendances by arrival mode of incident and month, August 2011 to July 2012<sup>2</sup>**

Arrival Mode	Aug	Sep	Oct	Nov	Dec	Jan	Feb	Mar	Apr	May	Jun	Jul	Total	%
Private transport	3640	3329	3426	3197	3067	3435	3214	3411	3366	3627	3336	3390	40438	48
Ambulance	2519	2470	2659	2570	2683	2662	2531	2495	2558	2573	2610	2586	30916	36
Taxi	601	542	622	568	588	574	573	641	599	648	730	738	7424	9
Public transport	215	244	212	224	155	232	197	288	222	214	242	236	2681	3
Walked	170	160	159	157	129	164	149	182	139	144	173	179	1905	2
Other/unknown	80	80	73	62	59	72	64	87	87	80	78	87	909	1
Police	48	46	44	<44	49	<43	57	<46	39	<48	<43	60	562	1
St John's ambulance	7	11	6	***	6	***	11	***	16	***	***	6	77	0
<b>Total</b>	<b>7280</b>	<b>6882</b>	<b>7201</b>	<b>6825</b>	<b>6736</b>	<b>7183</b>	<b>6796</b>	<b>7152</b>	<b>7026</b>	<b>7334</b>	<b>7215</b>	<b>7282</b>	<b>84912</b>	<b>100</b>

**Table 6: Discharge method of ED attendances by month, August 2011 to July 2012<sup>2</sup>**

Discharge method	Aug	Sep	Oct	Nov	Dec	Jan	Feb	Mar	Apr	May	Jun	Jul	Total	%
Admitted to hospital	2771	2568	2566	2533	2651	2676	2658	2784	2590	2692	2616	2605	31710	37
Discharged	2018	2021	2245	2065	2103	2152	2112	2274	2243	2239	2289	2459	26220	31
Discharged to other Health Care Provider	791	756	710	624	603	688	628	776	718	747	679	602	8322	10
Discharged to care of General Practitioner	504	523	478	519	482	512	495	528	510	651	563	554	6319	7
Fracture clinic	336	299	281	260	279	262	241	244	220	278	246	277	3223	4
Patient left department	352	249	317	245	252	175	161	173	201	175	248	201	2749	3
Own discharge	59	63	69	65	75	195	188	203	214	173	121	127	1552	2
ED clinic	149	116	120	146	111	125	132	113	110	129	109	117	1477	2
Physiotherapy ED	82	98	111	111	83	118	92	100	90	101	85	90	1161	1
Patient did not answer when called for treatment	82	35	47	39	36	52	54	41	67	74	78	82	687	1
Ear/nose/throat	39	36	38	35	29	50	40	45	54	41	31	42	480	1
Ophthalmology clinic	25	31	24	29	20	23	31	31	19	32	31	24	320	0
Died in department	21	15	16	24	22	24	22	15	17	16	16	14	222	0
Discharged to dentist	18	16	21	13	14	16	10	19	17	15	18	14	191	0
Maxillary facial unit	10	11	14	22	12	9	7	8	***	***	6	***	108	0
Police custody	5	***	8	***	5	***	***	5	***	7	10	8	67	0
Transfer to ward	***	12	7	***	***	9	11	***	***	6	9	***	64	0
Sent to theatre	***	***	***	***	***	***	***	***	***	***	***	***	27	0
Falls clinic	***	***	***	***	***	***	***	***	***	***	***	***	8	0
Other/unknown	***	***	***	***	***	***	***	***	***	***	***	***	***	0
Brought in dead	***	***	***	***	***	***	***	***	***	***	***	***	***	0
<b>Total</b>	<b>7268</b>	<b>6859</b>	<b>7077</b>	<b>6740</b>	<b>6785</b>	<b>7094</b>	<b>6888</b>	<b>7362</b>	<b>7080</b>	<b>7381</b>	<b>7158</b>	<b>7220</b>	<b>84912</b>	<b>100</b>

Published April 2013

Karen Swarbrick (TIIG Researcher/Analyst)

For further information contact: Jennifer Brizell, Centre for Public Health, Research Directorate, Liverpool John Moores University,  
2<sup>nd</sup> Floor Henry Cotton Campus, 15-21 Webster Street, Liverpool, L3 2ET

Tel: 0151 231 4500 Email: [j.s.brizell@ljmu.ac.uk](mailto:j.s.brizell@ljmu.ac.uk)

Website: [www.tiig.info](http://www.tiig.info) (please note data requests should be made through the website)