



TIIG

INJURY SURVEILLANCE IN THE NORTH WEST OF ENGLAND

University Hospital Aintree Emergency Department Monthly Bulletin: January to December 2012

This bulletin provides a breakdown of all attendances¹ at University Hospital Aintree Emergency Department (ED) between January and December 2012.

From January to December 2012, there were 85,226 attendances to University Hospital Aintree ED and August had the highest number of attendances (n=7,413).

There were a similar number of male (49%) and female (51%) attendances to Aintree ED (**Figure 1**). **Figure 2** illustrates age group of ED attendances for each month. Over two-fifths (42%) were aged 30-59 years and almost all (99%) ED attendances were aged 15 years or above, which is most likely due to the close proximity of the local children's ED (Alder Hey).

In 83% of attendances, injury group was recorded as other/unknown. This group includes ED attendances that are not injury related, such as heart attacks. Of those injury groups recorded, falls accounted for 9% of attendances, assaults accounted for 2% of all injury attendances, 2% road traffic collisions and 2% sports injuries (**Table 1**).

Table 2 shows the location of the incident of attendances. Three quarters (75%) of incidents took place in the home, 10% in a public space and 4% in work. The primary location for falls was the home (58%) (**Table 3**) and almost half (48%) of assaults were located in a public space (**Table 4**).

Table 5 shows the arrival method of attendances at University Hospital Aintree ED. Almost half (47%) used private transport whilst 37% arrived by an ambulance.

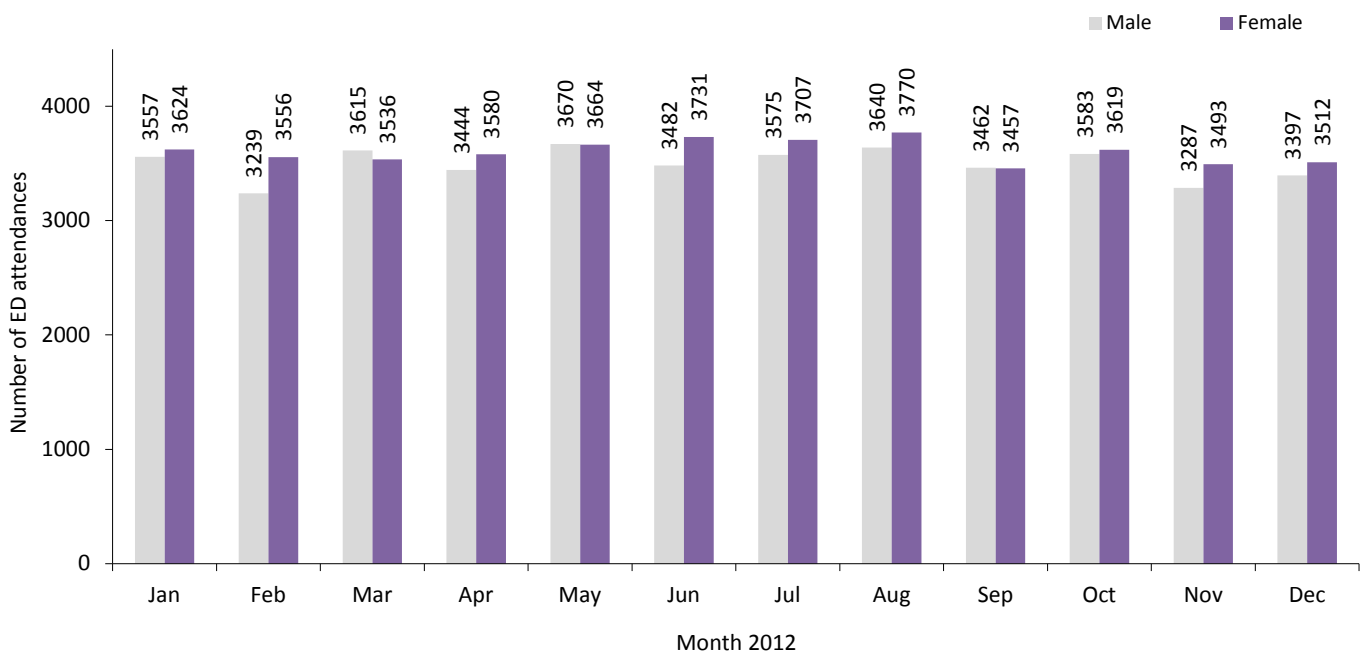
The disposal of a patient can give an indication of the severity of injuries sustained. Almost four in ten (37%) of ED attendees were admitted to hospital while three in ten (30%) were discharged. (**Table 6**).

Assaults

During January to December 2012 there were 2,036 assault attendances to University Hospital Aintree ED. Almost three-quarters (74%) of assault attendees between January and December 2012 were male and over half (53%) were aged 15-29 years.

¹ For other EDs, TIIG reports on injuries only. However, this report includes all attendances at Aintree ED. This is due to the high number of 'unknown' injury groups amongst attendances at Aintree ED which makes it difficult to analyse injury attendances separately.

Figure 1: Gender of ED attendances by month, January to December 2012*



*There were 26 attendances where gender was recorded as unknown

Figure 2: Age group of ED attendances by month, January to December 2012

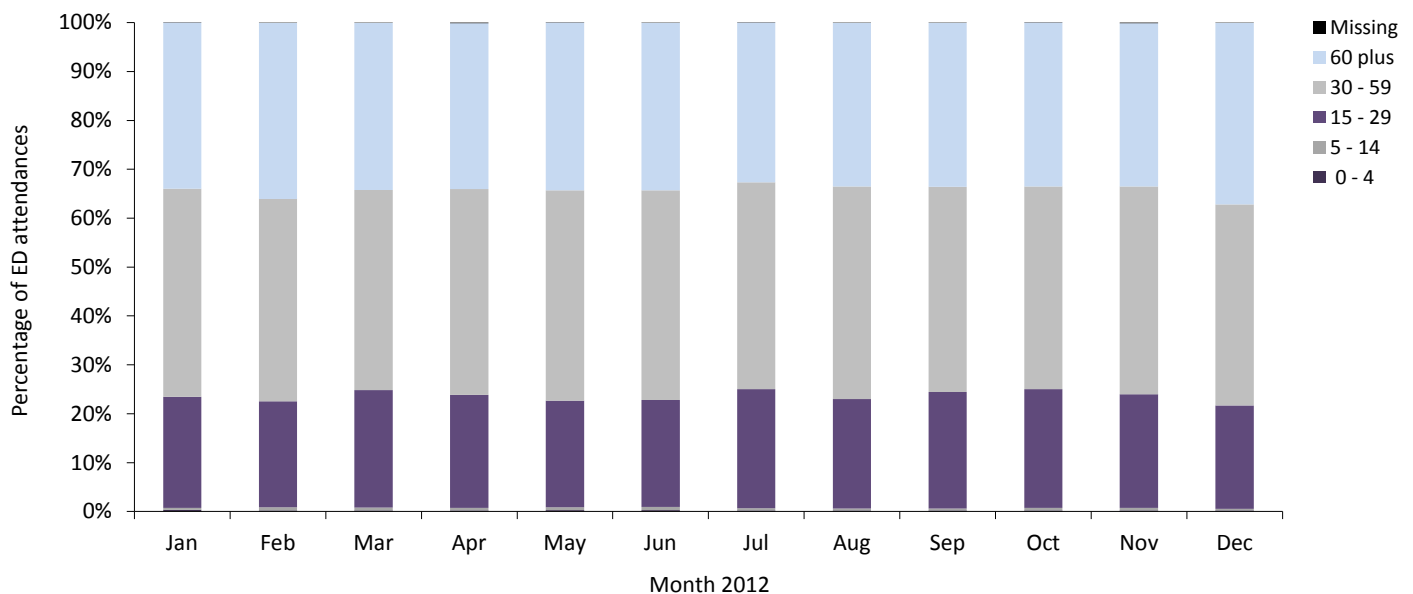


Table 1: ED attendances by injury group and month, January to December 2012²

Injury group	Jan	Feb	Mar	Apr	May	Jun	Jul	Aug	Sep	Oct	Nov	Dec	Total	%
Other/unknown	5969	5574	5934	5855	6132	5914	5984	6237	5677	5900	5628	5666	70470	83
Fall	647	742	617	614	644	727	731	642	640	673	655	739	8071	9
Assault	187	156	172	174	171	157	161	166	182	173	154	183	2036	2
Road traffic collision	182	123	149	162	164	173	160	131	170	160	152	151	1877	2
Sports injury	105	101	172	108	109	87	115	111	147	156	100	66	1377	2
Deliberate self-harm	76	92	102	105	99	144	123	110	96	123	75	102	1247	1
Firework	<20	<10	***	<10	<15	<15	<10	<20	<10	<20	<20	<15	138	0
Brought in dead	***	***	***	***	***	***	***	***	***	***	***	***	10	0
Total	7183	6796	7152	7026	7334	7215	7282	7413	6921	7205	6782	6917	85226	100

²Please note that all numbers less than five have been suppressed in line with patient confidentiality and if there is only one number less than five in a category then two numbers will be suppressed at the next level in order to prevent back calculations from totals.

Table 2: ED attendances by location of incident and month, January to December 2012²

Incident location	Jan	Feb	Mar	Apr	May	Jun	Jul	Aug	Sep	Oct	Nov	Dec	Total	%
Home	5488	5141	5437	5325	5582	5358	5369	5629	5011	5302	5131	5244	64017	75
Public space	743	736	772	799	643	777	801	758	754	711	641	658	8793	10
Other	631	619	623	611	786	761	792	733	810	867	690	777	8700	10
Work	288	251	287	248	282	276	292	268	304	279	273	206	3254	4
School	10	28	13	17	<25	8	***	***	9	15	19	7	150	0
Walton Prison	6	6	8	8	8	13	12	15	15	12	15	7	125	0
Altcourse Prison	11	8	6	11	10	16	9	7	8	6	6	12	110	0
In patient - Aintree	6	7	6	7	***	6	***	***	10	13	7	6	77	0
Total	7183	6796	7152	7026	7334	7215	7282	7413	6921	7205	6782	6917	85226	100

Table 3: Fall attendances by location of incident and month, January to December 2012²

Fall location	Jan	Feb	Mar	Apr	May	Jun	Jul	Aug	Sep	Oct	Nov	Dec	Total	%
Home	368	410	352	370	400	424	386	391	381	423	388	408	4701	58
Public space	191	240	183	177	148	191	208	174	157	136	164	219	2188	27
Other	52	55	52	46	62	84	97	63	73	86	69	78	817	10
Work	33	30	27	16	32	25	38	13	27	26	28	31	326	4
School	***	5	***	***	***	***	***	***	***	***	5	***	27	0
Altcourse Prison	***	***	***	***	***	***	***	***	***	***	***	***	5	0
In patient - Aintree	***	***	***	***	***	***	***	***	***	***	***	***	***	0
Walton Prison	***	***	***	***	***	***	***	***	***	***	***	***	***	0
Total	647	742	617	614	644	727	731	642	640	673	655	739	8071	100

Table 4: Assault attendances by location of incident and month, January to December 2012²

Assault location	Jan	Feb	Mar	Apr	May	Jun	Jul	Aug	Sep	Oct	Nov	Dec	Total	%
Public space	95	77	79	100	66	70	70	95	83	83	81	84	983	48
Other	53	37	35	42	49	48	42	32	52	47	40	51	528	26
Home	24	30	46	27	40	26	42	32	38	36	25	39	405	20
Work	15	7	9	***	15	10	6	***	8	6	6	6	95	5
Walton Prison	***	***	***	***	***	***	***	***	***	***	***	***	9	0
Altcourse Prison	***	***	***	***	***	***	***	***	***	***	***	***	8	0
School	***	***	***	***	***	***	***	***	***	***	***	***	8	0
Total	187	156	172	174	171	157	161	166	182	173	154	183	2036	100

Table 5: ED attendances by arrival mode of incident and month, January to December 2012²

Arrival Mode	Jan	Feb	Mar	Apr	May	Jun	Jul	Aug	Sep	Oct	Nov	Dec	Total	%
Private transport	3435	3214	3411	3366	3627	3336	3390	3453	3242	3209	3067	2983	39733	47
Ambulance	2662	2531	2495	2558	2573	2610	2586	2705	2481	2672	2582	2812	31267	37
Taxi	574	573	641	599	648	730	738	710	649	712	624	666	7864	9
Public transport	232	197	288	222	214	242	236	234	229	258	205	181	2738	3
Walk	164	149	182	139	144	173	179	177	176	198	158	149	1988	2
Other/unknown	72	64	87	87	80	78	87	69	85	89	82	74	954	1
Police transport	<45	57	<50	39	<50	<45	60	56	51	57	55	<50	599	1
St Johns ambulance	***	11	***	16	***	***	6	9	8	10	9	***	83	0
Total	7183	6796	7152	7026	7334	7215	7282	7413	6921	7205	6782	6917	85226	100

²Please note that all numbers less than five have been suppressed in line with patient confidentiality and if there is only one number less than five in a category then two numbers will be suppressed at the next level in order to prevent back calculations from totals.

Table 6: Discharge method of ED attendances by month, January to December 2012²

Discharge method	Jan	Feb	Mar	Apr	May	Jun	Jul	Aug	Sep	Oct	Nov	Dec	Total	%
Admitted to hospital	2771	2568	2566	2533	2651	2676	2658	2743	2617	2823	2662	2648	31916	37
Discharged	2152	2112	2274	2243	2239	2289	2459	2200	1928	2025	1916	2105	25942	30
Discharged to other health care provider	687	627	776	718	747	678	602	730	703	718	625	671	8282	10
Discharged to care of general practitioner	512	495	528	510	651	563	554	681	712	641	676	592	7115	8
Fracture clinic	262	241	244	220	278	246	277	277	276	268	227	238	3054	4
Patient left department	175	161	173	201	175	248	201	234	225	233	187	195	2408	3
Own discharge	195	188	203	214	173	121	127	136	71	102	80	90	1700	2
ED clinic	125	132	113	110	129	109	117	129	121	103	92	101	1381	2
Physiotherapy ED	118	92	100	90	101	85	90	105	106	114	87	69	1157	1
Patient did not answer when called for treatment	52	54	41	67	74	78	82	88	69	87	94	71	857	1
Ear/nose/throat	50	40	45	54	41	31	42	34	45	30	45	38	495	1
Ophthalmology clinic	23	31	31	19	32	31	24	22	14	23	19	30	299	0
Died in department	24	22	15	17	16	16	14	12	15	16	23	28	218	0
Discharged to dentist	16	10	19	17	15	18	14	***	***	***	20	21	151	0
Police custody	***	***	5	***	7	10	8	11	10	10	12	6	90	0
Transfer to ward	***	10	11	***	***	7	9	6	6	***	11	7	78	0
Maxillary facial unit	9	7	8	***	***	6	***	***	***	***	5	5	55	0
Sent to theatre	***	***	***	***	***	***	***	***	***	***	***	***	12	0
Other/unknown	***	***	***	***	***	***	***	***	***	***	***	***	8	0
Falls clinic	***	***	***	***	***	***	***	***	***	***	***	***	8	0
Total	7183	6796	7152	7026	7334	7215	7282	7413	6921	7205	6782	6917	85226	100

Published July 2013

Jennifer Brizell (TIIG researcher)

Centre for Public Health, Faculty of Health and Applied Social Sciences, Liverpool John Moores University

2nd Floor, Henry Cotton Campus, 15-21 Webster Street, Liverpool, L3 2ET

Tel: 0151 231 4500 Email: j.s.brizell@ljmu.ac.uk

Website: www.tiig.info (please note all data requests should be made through the TIIG website)

²Please note that all numbers less than five have been suppressed in line with patient confidentiality and if there is only one number less than five in a category then two numbers will be suppressed at the next level in order to prevent back calculations from totals.