

Trauma and Injury Intelligence Group Biannual Bulletin

Aintree University Hospital Emergency Department
April 2014 to March 2015

July 2015



Centre for Public Health,
Faculty of Education, Health and Community,
Liverpool John Moores University,
Henry Cotton Campus,
15-21 Webster Street,
Liverpool, L3 2ET

cph.org.uk

0151 231 4500

tiig@ljmu.ac.uk

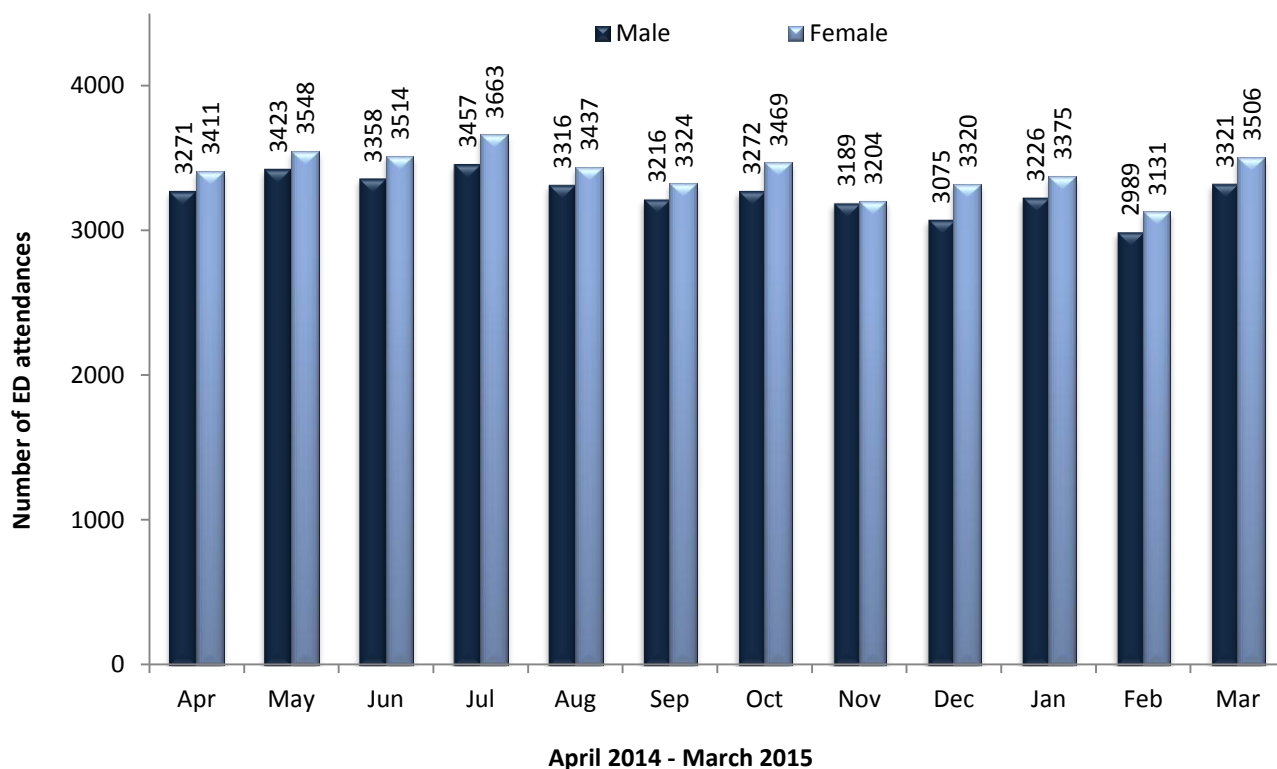
tiig.info

twitter.com/tiig_cph

ALL INJURY ATTENDANCES

This bulletin provides a breakdown of all injury attendances to University Hospital Aintree Emergency Department (ED) between April 2014 and March 2015. From April 2014 to March 2015, there were 80,036 attendances to University Hospital Aintree ED. Calculated as a daily average, July had the highest number of attendances, (230 per day) and December had the lowest (206 per day). There were slightly more female (51%) than male (49%) attendances to Aintree ED (figure 1).

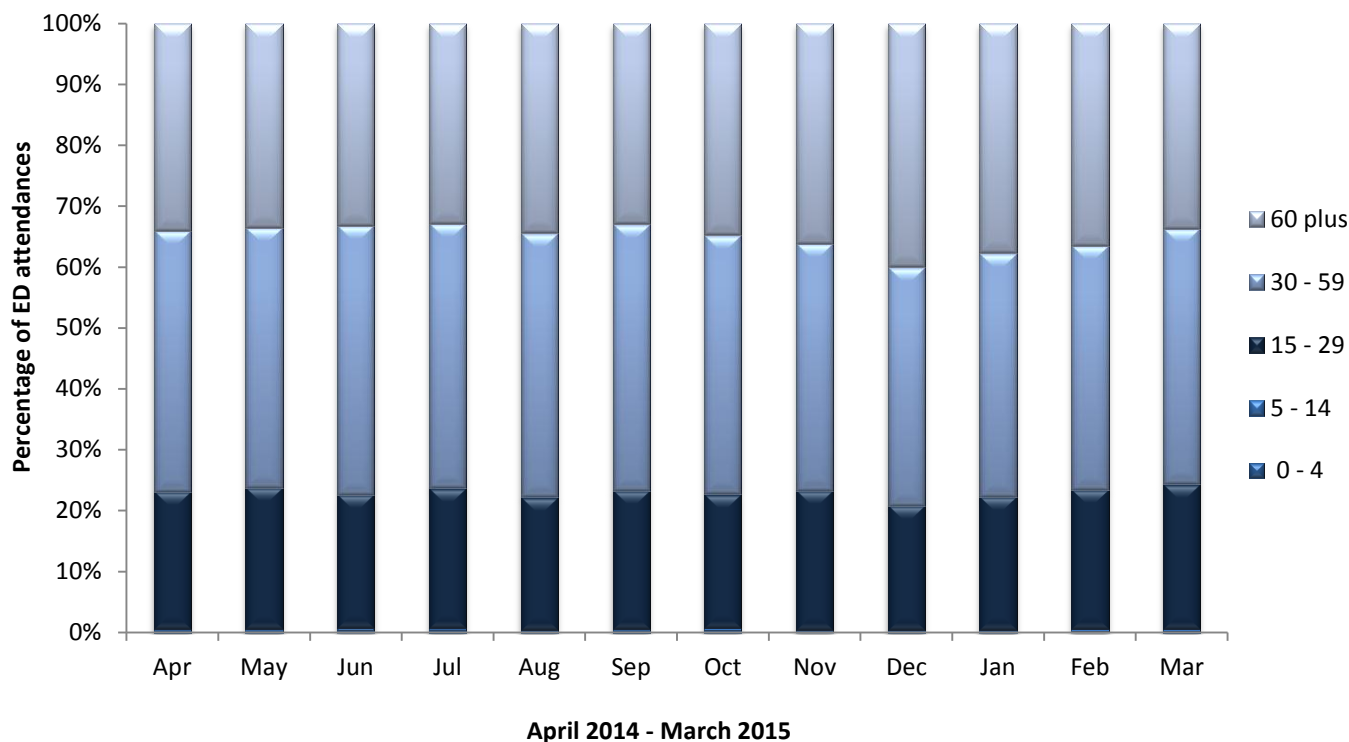
Figure 1: Gender of ED attendances by month, April 2014 to March 2015*



*There were 19 attendances where gender was recorded as unknown, these records have been omitted from the chart.

Figure 2 displays age group of ED attendances for each month. Over two-fifths (42%) were aged 30-59 years and almost all (99%) ED attendances were aged 15 years or over, which is likely due to the close proximity of Alder Hey children’s Hospital ED.

Figure 2: Age group of ED attendances by month, April 2014 to March 2015[^]



[^]There were twenty two attendances where age was not recorded.

Of recorded injury groups, falls accounted for 10% of all attendances, followed by road traffic collisions, assaults, sports injuries, and DSH, all with 2% each (table 1).

Table 1: ED attendances by injury group and month, April 2014 to March 2015¹

Injury group	Apr	May	Jun	Jul	Aug	Sep	Oct	Nov	Dec	Jan	Feb	Mar	Total	%
Other/unknown	5508	5730	5639	5932	5625	5379	5620	5336	5302	5492	4902	5535	66000	82
Fall	645	695	706	669	665	634	631	539	678	614	654	728	7858	10
Road traffic collision	164	171	180	150	171	160	178	157	148	179	176	150	1984	2
Assault	128	147	134	140	115	154	109	128	111	122	123	137	1548	2
Deliberate self-harm	104	88	96	127	92	86	86	94	95	107	151	147	1273	2
Sports injury	123	129	110	98	79	114	103	124	<55	<90	106	126	1246	2
Firework	13	13	8	6	6	15	15	16	<20	***	8	7	124	0
Total	6685	6974	6873	7123	6754	6542	6742	6394	6397	6602	6120	6830	80036	100

Table 2 shows the incident location of injury attendances. Almost three quarters (74%) of incidents took place in the home, 11% occurred in 'other' locations, 10% occurred in a public space and 4% occurred at work.

¹ Please note that all numbers less than five have been suppressed (***) in line with patient confidentiality and if there is only one number less than five in a category then two numbers will be suppressed at the next level in order to prevent back calculations from totals.

Table 2: ED attendances by location of incident and month, April 2014 to March 2015²

Arrival mode	Apr	May	Jun	Jul	Aug	Sep	Oct	Nov	Dec	Jan	Feb	Mar	Total	%
Home	5005	5157	5137	5265	5055	4763	5025	4756	4870	4977	4411	4950	59371	74
Other	691	776	725	826	729	746	720	745	707	741	683	785	8874	11
Public Space	702	716	699	683	665	701	676	595	577	605	693	738	8050	10
Work	275	306	303	<350	<310	322	305	283	229	266	315	325	3574	4
Educational Establishment	12	19	9	<15	***	10	16	15	14	13	18	32	167	0
Total	6685	6974	6873	7123	6754	6542	6742	6394	6397	6602	6120	6830	80036	100

Table 3 shows the arrival method for injury attendances to University Hospital Aintree ED. Over two-fifths (44%) arrived by private transport and nearly four in ten (39%) arrived by ambulance.

Table 3: ED attendances by arrival mode of incident and month, April 2014 to March 2015

Arrival mode	Apr	May	Jun	Jul	Aug	Sep	Oct	Nov	Dec	Jan	Feb	Mar	Total	%
Private Transport	2946	3099	3181	3254	3037	2883	2919	2717	2692	2680	2584	3030	35022	44
Ambulance	2599	2657	2567	2592	2581	2427	2603	2541	2638	2769	2379	2515	30868	39
Taxi	662	690	595	708	636	672	698	668	642	674	706	727	8078	10
Public Transport	215	242	235	244	201	253	222	196	157	184	169	236	2554	3
Walk	158	171	183	207	177	193	185	159	143	162	160	201	2099	3
Other	53	62	49	46	61	59	59	63	66	68	62	68	716	1
Police	52	53	63	72	61	55	56	50	59	65	60	53	699	1
Total	6685	6974	6873	7123	6754	6542	6742	6394	6397	6602	6120	6830	80036	100

The disposal of a patient can give an indication of the severity of injuries sustained. Just over four in ten (41%) of ED attendees were discharged from hospital without a follow-up, while close to four in ten (38%) were admitted to hospital (table 4).

Table 4: Discharge method of ED attendances by month, April 2014 to March 2015

Discharge method	Apr	May	Jun	Jul	Aug	Sep	Oct	Nov	Dec	Jan	Feb	Mar	Total	%
Discharged	2981	3022	3023	3312	3017	2836	2511	2362	2288	2482	2255	2484	32573	41
Admitted to hospital	2062	2182	2116	2119	2166	2206	3000	2904	2997	2919	2728	3114	30513	38
Discharged - GP	538	524	514	425	478	433	440	420	379	379	372	340	5242	7
Referred Fracture clinic	265	294	309	304	262	263	272	218	238	249	220	285	3179	4
Referred to other outpatient clinic	175	208	198	199	156	172	190	187	142	150	163	182	2122	3
Other	235	301	287	290	291	262	62	50	64	77	108	88	2115	3
Left department	203	211	193	215	150	156	90	93	121	146	125	156	1859	2
Other HCP	112	109	108	123	121	111	100	77	89	106	80	81	1217	2
Referred to ED Clinic	97	114	105	120	95	93	60	64	62	70	52	90	1022	1
Died in Department	17	9	20	16	18	10	17	19	17	24	17	10	194	0
Total	6685	6974	6873	7123	6754	6542	6742	6394	6397	6602	6120	6830	80036	100

ASSAULT ATTENDANCES

Between April 2014 and March 2015 there were 1,548 assault attendances to University Hospital Aintree ED. Almost three-quarters (73%) of assault attendees between April 2014 and March 2015 were male. Half of all assault attendees (50%) were aged between 15 and 29 years and 46% were aged between 30 and 59 years.