

Alder Hey Children's Hospital Emergency Department Monthly Bulletin: October 2010 to September 2011

This bulletin provides a breakdown of injury attendances to Alder Hey Children's Hospital Emergency Department (ED) between October 2010 and September 2011.

Between October 2010 and September 2011 there were 20,408 ED injury attendances. The peak month for injury attendance was May (n=2,086), with December (n=889) accounting for the fewest. For each month there were more male (58%) injury attendances than female presenting at Alder Hey ED; patients aged 10 to 14 years (42%) were the largest age group of injury attendances (Figures 1 and 2).

The majority (92%) of injury attendances between October 2010 and September 2011 were recorded as other injury. This can cover incidents such as a body injury

or laceration (Table 1).

Table 2 illustrates the location where other injuries occurred. Over two-fifths of injuries occurred in the home (44%), whilst 19% occurred in a public place and 18% in an education establishment.

Table 3 illustrates the method of disposal of injury attendances. Almost two-thirds (65%) of all injury attendances were discharged.

Assault attendees presenting at Alder Hey Children's Hospital ED between October 2010 and September 2011 were mainly male (61%) and aged between 10 to 14 years (78%). The primary location of assaults was recorded as a public place (51%).

Figure 1: Gender of injury attendances by month, October 2010 to September 2011

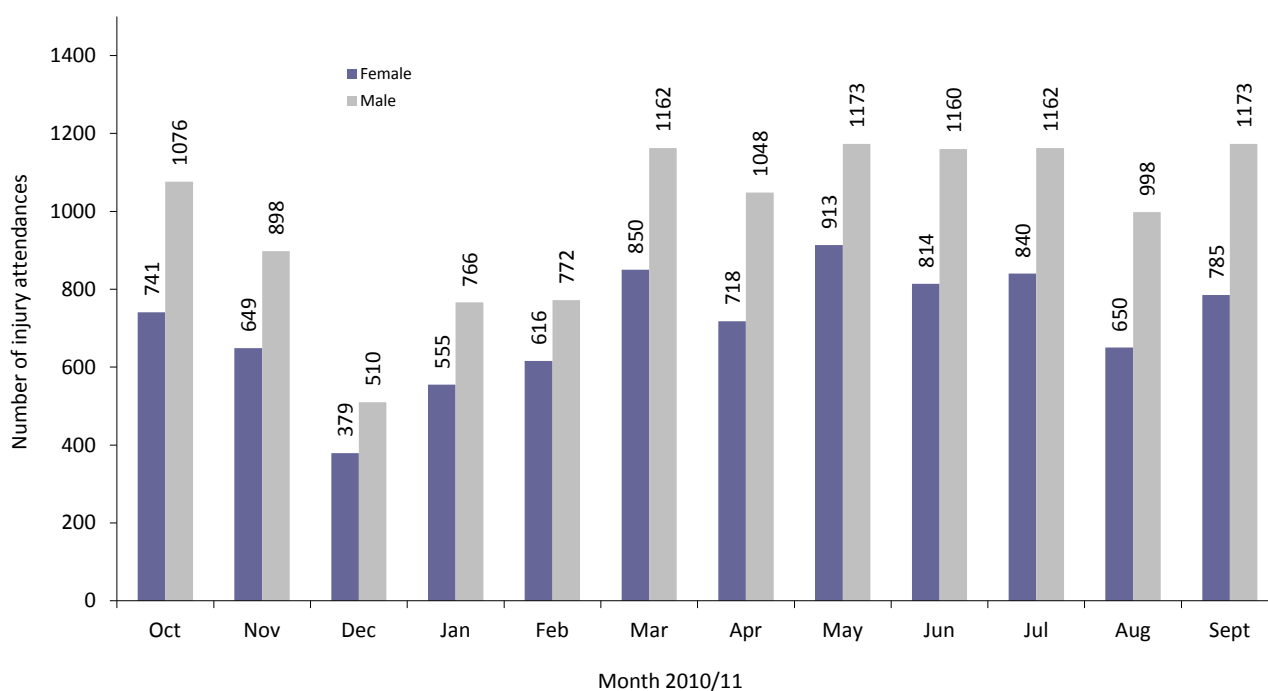


Figure 2: Age group of injury attendances by month, October 2010 to September 2011

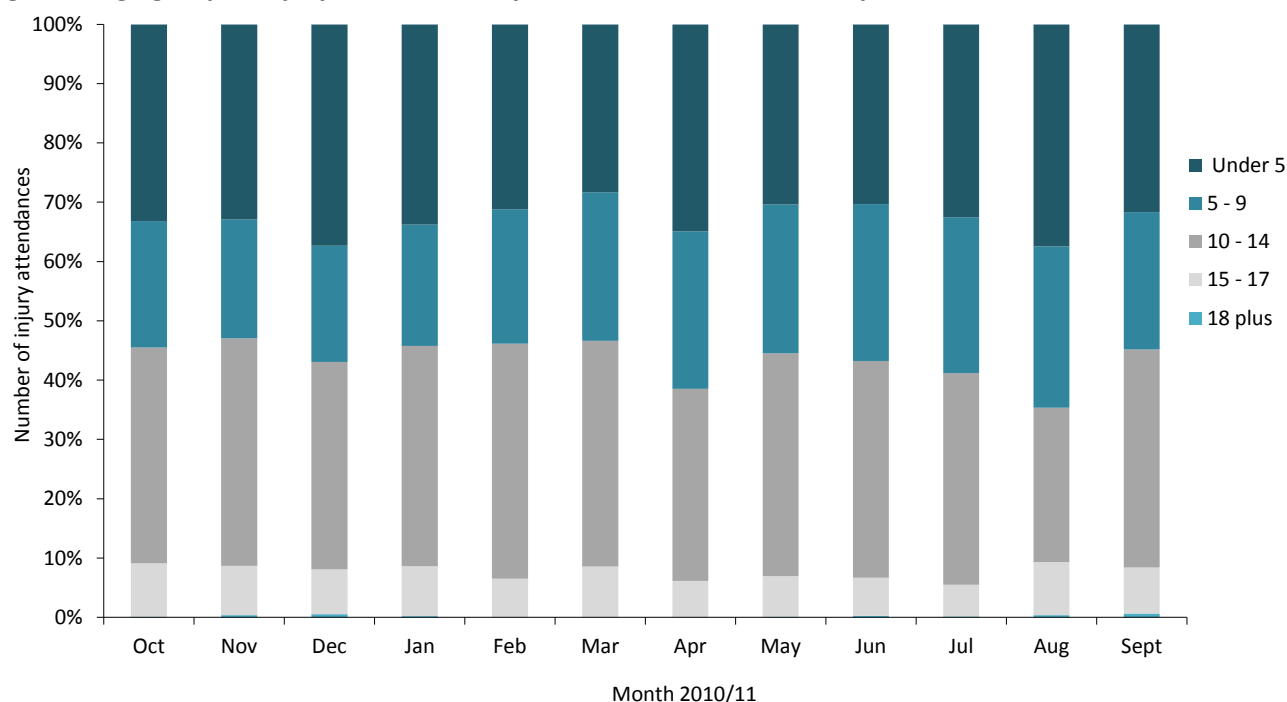


Table 1: Injury attendances by injury group, October 2010 to September 2011^{1 2 3}

Injury group	Oct	Nov	Dec	Jan	Feb	Mar	Apr	May	Jun	Jul	Aug	Sept	Total	%
Other injury	1671	1429	810	1212	1310	1874	1643	1945	1821	1885	1466	1811	18877	92
Road traffic collision	45	29	14	19	14	39	30	31	39	23	39	35	357	2
Maxillary/facial	28	22	24	16	20	21	26	28	32	29	52	35	333	2
Assault	27	32	10	32	18	34	27	38	26	23	17	26	310	2
Ingestion - accidental	14	16	16	14	14	13	18	15	27	22	23	27	219	1
Bite/sting	18	11	<8	10	***	15	14	<17	19	16	30	13	173	1
Ingestion - deliberate	14	8	<9	18	<10	16	8	12	10	***	21	11	139	1
Total	1817	1547	889	1321	1388	2012	1766	2086	1974	2002	1648	1958	20408	101

Table 2: Other injury attendances by location of incident, October 2010 to September 2011

Other injury location	Oct	Nov	Dec	Jan	Feb	Mar	Apr	May	Jun	Jul	Aug	Sept	Total	%
Home	720	604	405	547	587	723	740	873	773	765	732	735	8204	44
Public place	272	198	123	166	196	319	401	371	387	403	391	325	3552	19
Education establishment	336	374	147	284	285	469	145	369	350	287	16	314	3376	18
Sport	128	98	23	100	103	202	152	136	125	149	99	173	1488	8
Other/unknown	132	110	84	70	69	100	112	125	109	161	129	128	1329	7
Street	29	***	<6	12	17	7	19	8	15	34	34	47	229	1
Playground	9	6	***	<6	10	18	38	20	16	34	22	34	215	1
Indoors	20	19	5	17	23	19	15	14	19	20	17	19	207	1
Road traffic collision	16	6	11	8	13	11	10	12	9	15	14	13	138	1
Hospital	***	5	***	***	***	***	***	***	6	***	***	7	43	0
Bouncy castle	***	***	***	***	***	***	5	5	5	9	***	***	36	0
Leisure park	***	***	***	***	***	***	***	5	***	***	***	***	15	0
Semi-public party	***	***	***	***	***	***	***	***	***	***	***	***	19	0
Total	1669	1426	810	1212	1308	1873	1643	1941	1819	1883	1464	1803	18851	100

¹ There were 26 deliberate self-harm attendances during this period. To maintain patient confidentiality these have been categorised under other injury. Please note these attendances are not included in Table 2.

² *** Please note that in all tables all numbers less than five have been suppressed in line with patient confidentiality and if there is only one number less than five in a category then two numbers will be suppressed at the next level (e.g. <6) in order to prevent back calculations from totals.

³ Please note that in all tables percentages may not add up to 100 due to rounding.

Table 3: Disposal method of injury attendances by month, October 2010 to September 2011

Disposal method	Oct	Nov	Dec	Jan	Feb	Mar	Apr	May	Jun	Jul	Aug	Sept	Total	%
Home/discharged	1183	1033	589	872	889	1263	1045	1292	1238	1354	1119	1319	13196	65
Fracture clinic - Alder Hey	220	163	85	160	167	272	239	254	290	247	147	228	2472	12
Re-dressing clinic	132	130	63	100	109	168	170	197	161	158	116	165	1669	8
General practitioner	79	66	39	53	71	111	96	123	53	18	40	43	792	4
ED observation area	79	60	43	41	43	36	46	33	43	28	29	22	503	2
Other	35	22	21	31	31	50	35	58	48	59	49	55	494	2
Out patient other	20	10	9	10	19	21	24	28	19	21	27	20	228	1
Admitted to orthopaedic	16	10	***	<6	8	13	25	20	27	31	21	23	203	1
Admitted plastics	11	9	6	8	8	11	17	8	17	22	22	12	151	1
Admitted other	8	8	***	***	9	8	11	18	11	9	25	26	137	1
Plastic surgery	***	10	<6	7	6	7	12	8	10	15	9	9	102	0
Community nurse, health visitor, district nurse, midwife	***	5	***	11	***	5	11	13	14	9	11	9	97	0
Maxillary/facial	8	***	***	***	***	6	11	6	11	16	9	5	85	0
Ear nose and throat - out patient department	***	8	***	7	9	9	7	6	6	***	5	7	70	0
Surgical or medical follow-up	6	***	***	***	7	13	***	8	9	***	6	***	61	0
Central admissions	***	***	***	***	***	***	6	7	8	6	6	5	52	0
Left before treatment	5	***	6	***	***	9	5	***	6	***	***	5	49	0
Refer to other hospital	***	***	***	***	***	***	***	***	***	***	***	***	26	0
Dentist (own)	***	***	5	***	***	***	***	***	***	***	***	***	21	0
Total	1817	1547	889	1321	1388	2012	1766	2086	1974	2002	1648	1958	20408	100

Published February 2012

Nicola Davenport (Merseyside and Cheshire TIIG officer)

Centre for Public Health, 2nd Floor, Henry Cotton Campus, 15-21 Webster Street, Liverpool, L17 3ETTel: 0151 231 4500 or Email: n.m.davenport@ljamu.ac.ukWebsite: www.tiig.info (please note data requests should be made through the website)