

## Alder Hey Children's Hospital Emergency Department Monthly Bulletin: January to December 2011

This bulletin provides a breakdown of injury attendances to Alder Hey Children's Hospital Emergency Department (ED) between January and December 2011.

Between January and December 2011 there were 20, 676 ED injury attendances. The peak month for injury attendance was May (n=2,086), with December (n=1098) accounting for the fewest. For each month there were more male (58%) injury attendances than female presenting at Alder Hey ED; patients aged 10 to 14 years (36%) were the largest age group of injury attendances (Figures 1 and 2).

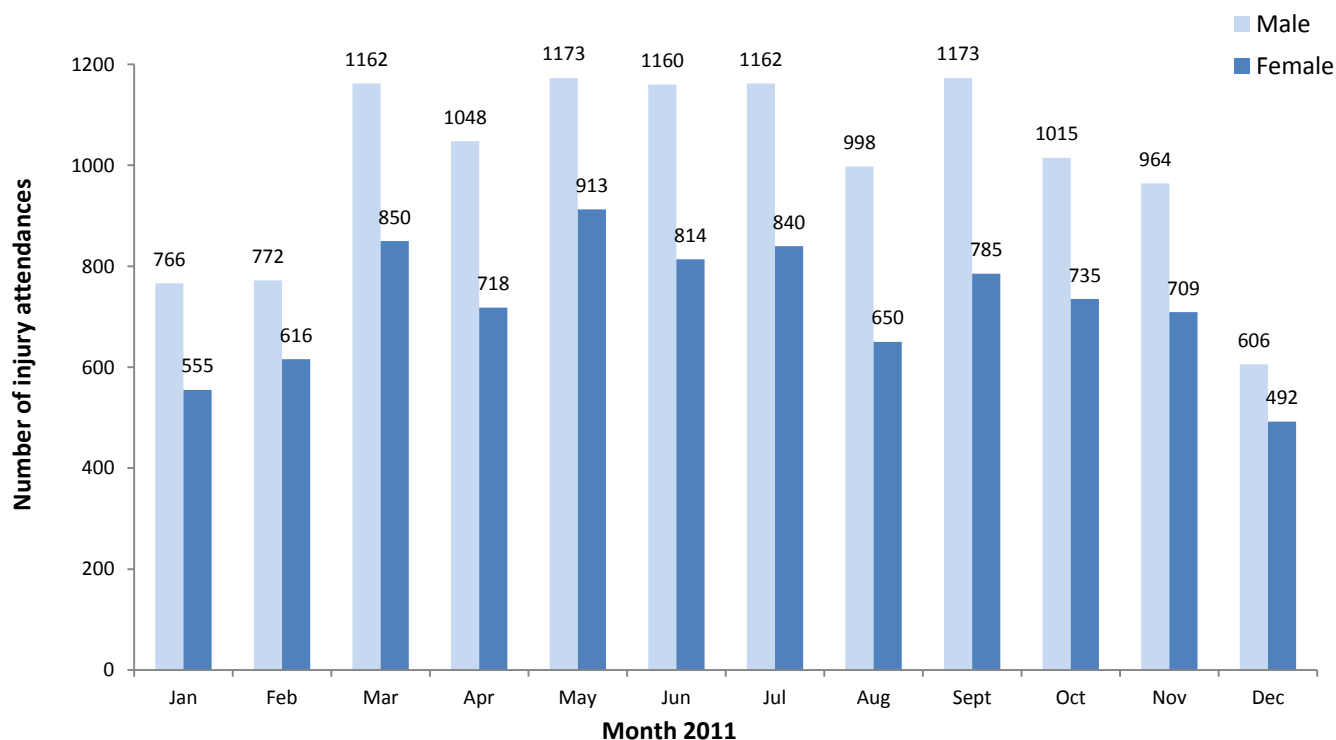
The majority (92%) of injury attendances between January and December 2011 were recorded as other injury. This can cover incidents such as a body injury or laceration (Table 1).

**Table 2** illustrates the location where other injuries occurred. Over two-fifths of injuries occurred in the home (44%), whilst 18% occurred in a public place and 18% in an education establishment.

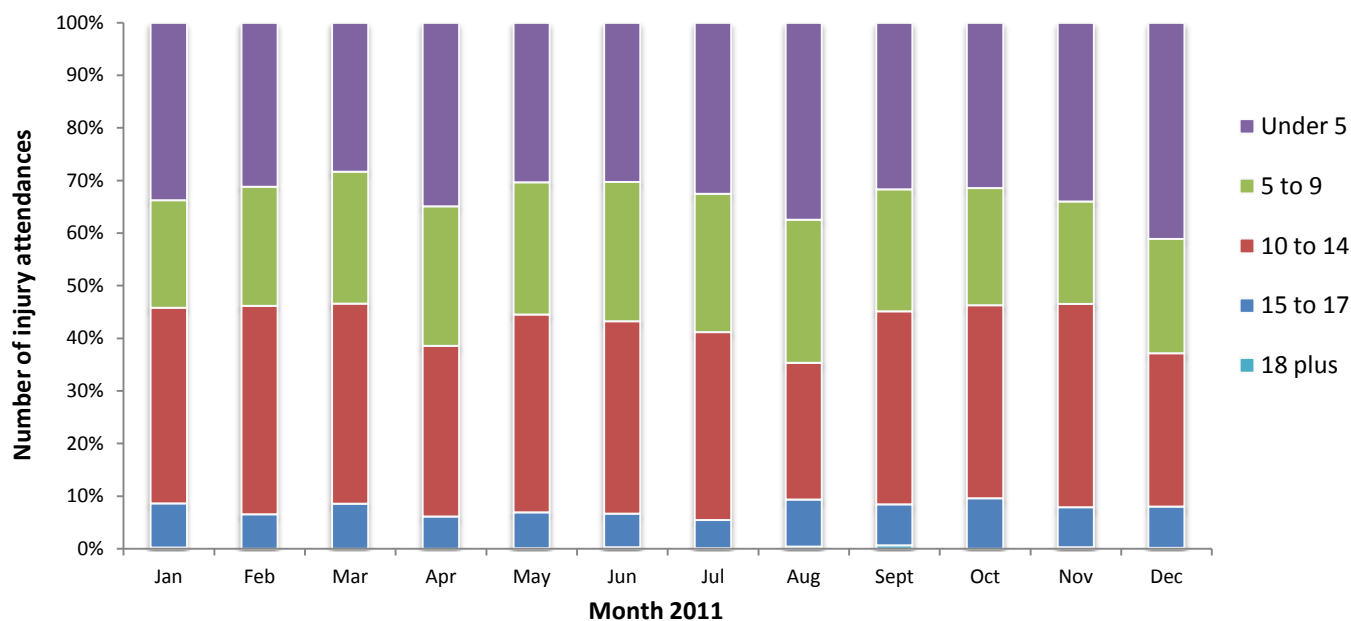
**Table 3** illustrates the discharge method of injury attendances. Almost two-thirds (65%) of all injury attendances were discharged.

There were 303 assault attendees presenting at Alder Hey Children's Hospital ED between January and December 2011 and these were mainly male (61%) and aged between 10 to 14 years (60%). The primary location of assaults was recorded as a public place (47%).

**Figure 1: Gender of injury attendances by month, January to December 2011**



**Figure 2: Age group of injury attendances by month, January to December 2011**



**Table 1: Injury attendances by injury group, January to December 2011<sup>1</sup>**

Injury group	Jan	Feb	Mar	Apr	May	Jun	Jul	Aug	Sept	Oct	Nov	Dec	Total	%
Other injury	1212	1308	1873	1643	1941	1819	1883	1464	1803	1592	1555	987	19080	92
Maxillary/facial	16	20	21	26	28	32	29	52	35	36	36	32	363	2
Road traffic collision (RTC)	19	14	39	30	31	39	23	39	35	30	32	30	361	2
Assault	32	18	34	27	38	26	23	<18	26	34	21	<8	303	1
Ingestion - accidental	14	14	13	18	15	27	22	23	27	28	13	16	230	1
Bite/sting	<11	***	<16	14	17	19	16	30	13	19	9	14	179	1
Ingestion - deliberate	18	9	16	<9	<13	<11	***	21	11	<10	<7	8	132	1
Deliberate self-harm	***	***	***	***	***	***	***	***	8	***	***	***	28	0
<b>Total</b>	<b>1321</b>	<b>1388</b>	<b>2012</b>	<b>1766</b>	<b>2086</b>	<b>1974</b>	<b>2002</b>	<b>1648</b>	<b>1958</b>	<b>1750</b>	<b>1673</b>	<b>1098</b>	<b>20676</b>	<b>100</b>

**Table 2: Other injury attendances by location of incident, January to December 2011**

Location of incident	Jan	Feb	Mar	Apr	May	Jun	Jul	Aug	Sept	Oct	Nov	Dec	Total	%
Home	547	587	723	740	873	773	765	732	735	686	659	554	8374	44
Public place	166	196	319	401	371	387	403	391	325	254	186	122	3521	18
Education establishment	284	285	469	145	369	350	287	16	314	292	404	156	3371	18
Sport	100	103	202	152	136	125	149	99	173	162	135	48	1584	8
Other	70	69	100	112	125	109	161	129	128	106	113	73	1295	7
Street	12	17	7	19	8	15	34	34	47	21	15	7	236	1
Playground	5	10	18	38	20	16	34	22	34	16	10	***	225	1
Indoors	17	23	19	15	14	19	20	17	19	21	15	13	212	1
RTC	8	13	11	10	12	9	15	14	13	22	14	9	150	1
Hospital	***	***	***	***	***	6	***	***	7	5	***	***	43	0
Bouncy castle	***	***	***	5	5	5	9	***	***	***	***	***	38	0
Semi public party	***	***	***	***	***	***	***	***	***	***	***	***	20	0
Leisure park	***	***	***	***	5	***	***	***	***	***	***	***	11	0
<b>Total</b>	<b>1212</b>	<b>1308</b>	<b>1873</b>	<b>1643</b>	<b>1941</b>	<b>1819</b>	<b>1883</b>	<b>1464</b>	<b>1803</b>	<b>1592</b>	<b>1555</b>	<b>987</b>	<b>19080</b>	<b>100</b>

<sup>1</sup> Please note that in all tables all numbers less than five have been suppressed in line with patient confidentiality and if there is only one number less than five in a category then two numbers will be suppressed at the next level (e.g. <6) in order to prevent back calculations from totals.

**Table 2: Injury attendances by discharge method, January to December 2011**

Discharge method	Jan	Feb	Mar	Apr	May	Jun	Jul	Aug	Sept	Oct	Nov	Dec	Total	%
Home/discharged	872	889	1263	1045	1292	1238	1354	1119	1319	1159	1131	736	13417	65
Fracture clinic - Alder Hey	160	167	272	239	254	290	247	147	228	177	172	89	2442	12
Re-dressing clinic	100	109	168	170	197	161	158	116	165	153	135	87	1719	8
General Practitioner	53	71	111	96	123	53	18	40	43	53	59	38	758	4
Other	31	31	50	35	58	48	59	49	55	46	44	32	538	3
ED observation area	41	43	36	46	33	43	28	29	22	24	17	19	381	2
Out patient other	10	19	21	24	28	19	21	27	20	25	19	11	244	1
Admitted to orthopaedic	5	8	13	25	20	27	31	21	23	20	25	11	229	1
Admitted other	***	9	<9	11	18	11	9	25	26	24	14	16	174	1
Admitted plastics	8	8	11	17	8	17	22	22	12	22	8	13	168	1
Community nurse, health visitor, district nurse, midwife	11	***	<6	11	13	14	9	11	9	12	7	7	112	1
Plastic surgery	7	6	7	12	8	10	15	9	9	6	8	8	105	1
Maxillary/facial	***	***	6	11	6	11	16	9	5	9	14	8	101	0
Ear nose and throat - out patient department	7	9	9	7	6	6	***	<6	7	<6	7	<6	75	0
Surgical or medical follow-up	***	7	13	***	8	9	***	6	***	***	***	***	60	0
Left before treatment	***	***	9	5	***	6	***	***	5	5	***	10	54	0
Central admissions	***	***	***	6	7	8	6	6	5	***	5	***	52	0
Refer to other hospital	***	***	***	***	***	***	***	***	***	***	***	***	24	0
Dentist (own)	***	***	***	***	***	***	***	***	***	***	***	***	23	0
<b>Total</b>	<b>1321</b>	<b>1388</b>	<b>2012</b>	<b>1766</b>	<b>2086</b>	<b>1974</b>	<b>2002</b>	<b>1648</b>	<b>1958</b>	<b>1750</b>	<b>1673</b>	<b>1098</b>	<b>20676</b>	<b>100</b>

Published February 2012

Nicola Davenport (Merseyside and Cheshire TIIG officer)

Centre for Public Health, 2<sup>nd</sup> Floor, Henry Cotton Campus, 15-21 Webster Street, Liverpool, L17 3ET

Tel: 0151 231 4500 or Email: [n.m.davenport@ljmu.ac.uk](mailto:n.m.davenport@ljmu.ac.uk)

Website: [www.tiig.info](http://www.tiig.info) (please note data requests should be made through the website)