

## Alder Hey Children's Hospital Emergency Department Monthly Bulletin: October 2011 to September 2012

This bulletin provides a breakdown of injury attendances to Alder Hey Children's Hospital Emergency Department (ED) between October 2011 and September 2012.

Between October 2011 and September 2012 there were 19,042 ED injury attendances. The peak month for injury attendance was May (n=1,923), with December (n=1,098) accounting for the fewest. For each month there were more male (57%) injury attendances than female presenting at Alder Hey ED; patients aged 10 to 14 years (35%) were the largest age group of injury attendances (Figures 1 and 2).

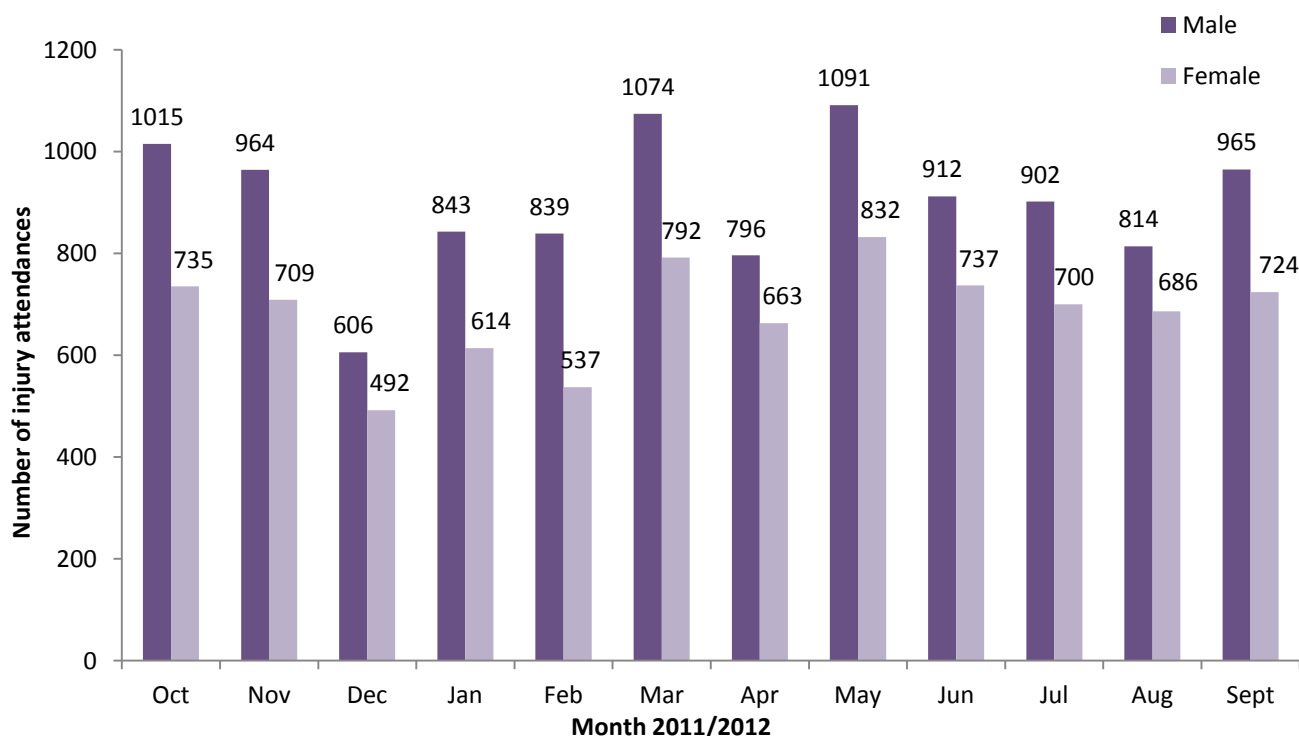
The majority (93%) of injury attendances between October 2011 and September 2012 were recorded as other injury. This can cover incidents such as a body injury or laceration (Table 1).

**Table 2** illustrates the location where other injuries occurred. Over two-fifths of injuries occurred in the home (44%), whilst 18% occurred in a public place and 17% in an education establishment.

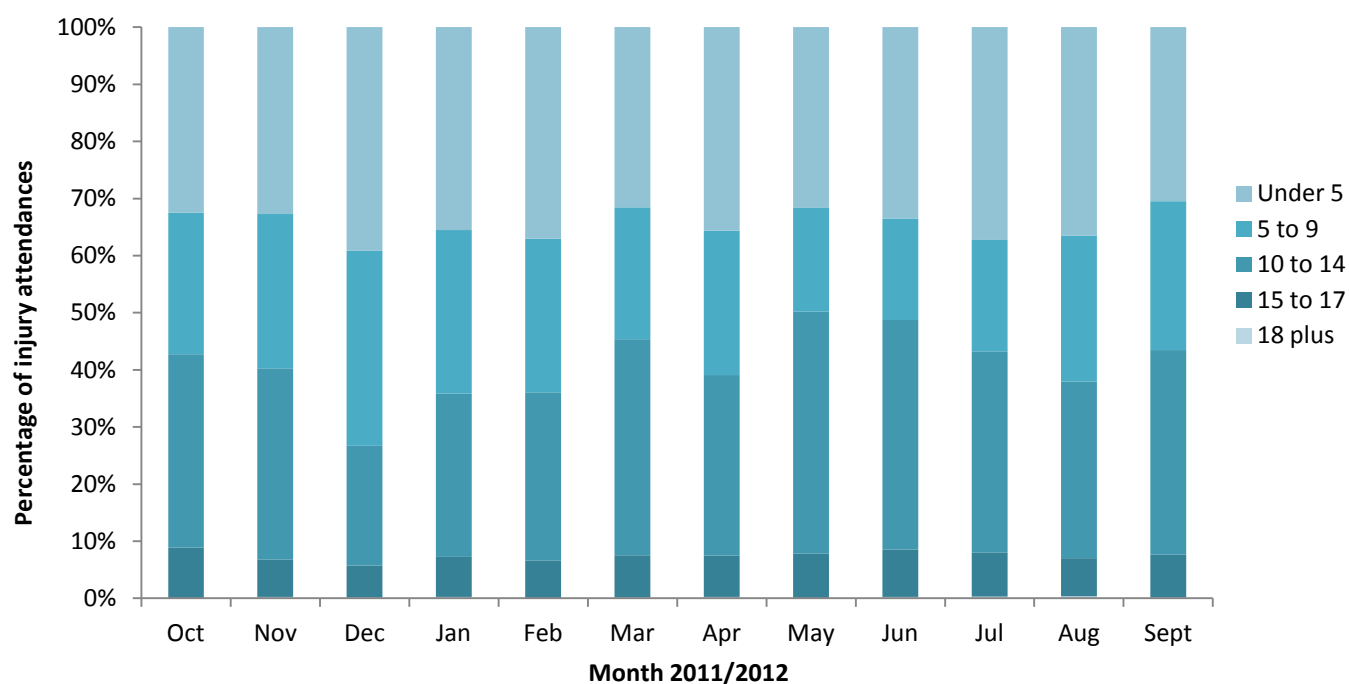
**Table 3** illustrates the discharge method of injury attendances. Over two-thirds (68%) of all injury attendances were discharged.

There were 233 assault attendees presenting at Alder Hey Children's Hospital ED between October 2011 and September 2012; these were mainly male (66%) and aged between 10 to 14 years (53%). The primary location of assaults was recorded as a public place (42%).

**Figure 1: Gender of injury attendances by month, October 2011 to September 2012**



**Figure 2: Age group of injury attendances by month, October 2011 to September 2012**



**Table 1: Injury attendances by injury group, October 2011 to September 2012<sup>123</sup>**

Injury group	Oct	Nov	Dec	Jan	Feb	Mar	Apr	May	Jun	Jul	Aug	Sept	Total	%
Other injury	1594	1556	991	1354	1272	1754	1343	1805	1548	1506	1378	1577	17678	93
Maxillary/facial	36	36	32	21	28	27	28	32	30	21	21	36	348	2
Road traffic collision	30	32	30	22	21	27	29	27	20	26	26	20	310	2
Assault	34	21	7	23	21	22	23	18	12	18	14	20	233	1
Ingestion - accidental	28	13	16	17	17	16	14	17	14	<15	14	<20	193	1
Bite/sting	19	9	14	7	9	10	14	13	14	15	29	16	169	1
Ingestion - deliberate	9	6	8	13	8	10	8	11	11	***	18	<7	111	1
<b>Total</b>	<b>1750</b>	<b>1673</b>	<b>1098</b>	<b>1457</b>	<b>1376</b>	<b>1866</b>	<b>1459</b>	<b>1923</b>	<b>1649</b>	<b>1602</b>	<b>1500</b>	<b>1689</b>	<b>19042</b>	<b>100</b>

**Table 2: Other injury attendances by location of incident, October 2011 to September 2012<sup>13</sup>**

Other injury location	Oct	Nov	Dec	Jan	Feb	Mar	Apr	May	Jun	Jul	Aug	Sept	Total	%
Home	686	659	554	650	547	651	644	696	712	665	697	675	7836	44
Education establishment	292	404	156	317	276	434	162	400	226	201	11	276	3155	18
Public place	254	186	122	158	178	298	252	303	303	328	361	294	3037	17
Sport	162	135	48	78	110	156	118	167	100	98	82	142	1396	8
Other/unknown	106	113	73	92	113	96	91	142	117	113	140	116	1312	7
Street	21	15	7	13	10	34	21	44	34	42	32	20	293	2
Playground	16	<13	***	12	14	32	18	21	13	19	21	16	194	1
Indoors	21	15	13	15	6	20	17	5	15	14	12	17	170	1
Road traffic collision	22	14	9	13	11	18	9	13	14	10	14	16	163	1
Bouncy castle	***	***	***	***	***	***	***	5	8	***	***	***	29	0
Hospital	5	***	***	***	***	***	***	***	***	***	***	***	27	0
Semi-public party	***	***	***	***	***	***	***	***	***	***	***	***	16	0
Leisure park	***	***	***	***	***	***	***	***	***	***	***	***	***	0
<b>Total</b>	<b>1592</b>	<b>1555</b>	<b>987</b>	<b>1353</b>	<b>1269</b>	<b>1746</b>	<b>1336</b>	<b>1800</b>	<b>1544</b>	<b>1497</b>	<b>1374</b>	<b>1577</b>	<b>17630</b>	<b>100</b>

<sup>1</sup> Please note that in all tables all numbers less than five have been suppressed in line with patient confidentiality and if there is only one number less than five in a category then two numbers will be suppressed at the next level (e.g. <6) in order to prevent back calculations from totals.

<sup>2</sup> There were 48 deliberate self-harm attendances during this period. To maintain patient confidentiality these have been categorised under other injury. Please note these attendances are not included in Table 2.

<sup>3</sup> Please note that in all tables percentages may not add up to 100 due to rounding.

**Table 3: Injury attendances by discharge method, October 2011 to September 2012<sup>13</sup>**

Discharge method	Oct	Nov	Dec	Jan	Feb	Mar	Apr	May	Jun	Jul	Aug	Sept	Total	%
Home/discharged	1159	1131	736	982	977	1323	955	1332	1092	1124	1012	1059	12882	68
Fracture clinic - Alder Hey	177	172	89	147	121	192	154	223	173	158	148	216	1970	10
Re-dressing clinic	153	135	87	137	113	143	120	128	125	114	110	138	1503	8
General practitioner	53	59	38	31	26	15	37	56	52	36	41	81	525	3
Other	46	44	32	30	26	41	53	51	49	44	50	46	512	3
ED observation area	24	17	19	33	34	30	43	38	49	29	42	46	404	2
Out patient other	25	19	11	19	16	19	22	22	16	20	18	13	220	1
Admitted to orthopaedic	20	25	11	14	12	21	11	15	21	13	17	19	199	1
Admitted other	24	14	16	<10	***	19	15	13	10	20	10	17	171	1
Admitted plastics	22	8	13	13	***	20	10	<6	15	8	6	18	142	1
Community nurse, health visitor, district nurse, midwife	12	7	7	11	11	***	7	***	10	5	11	5	93	0
Plastic surgery	6	8	8	5	6	14	8	6	7	9	6	9	92	0
Maxillary/facial	9	14	8	7	7	5	8	5	7	6	***	***	83	0
Ear nose and throat - out patient department	5	7	5	6	***	***	7	10	6	7	8	8	76	0
Left before treatment	5	***	10	6	7	8	***	***	***	***	***	***	59	0
Surgical or medical follow-up	***	***	***	***	***	***	***	***	***	***	7	***	33	0
Dentist (own)	***	***	***	***	***	***	***	***	7	***	***	***	30	0
Central admissions	***	5	***	***	***	***	***	***	***	***	5	***	28	0
Refer to other hospital	***	***	***	***	***	***	***	***	***	***	***	***	20	0
<b>Total</b>	<b>1750</b>	<b>1673</b>	<b>1098</b>	<b>1457</b>	<b>1376</b>	<b>1866</b>	<b>1459</b>	<b>1923</b>	<b>1649</b>	<b>1602</b>	<b>1500</b>	<b>1689</b>	<b>19042</b>	<b>100</b>

Published February 2013

Jennifer Brizell (Merseyside and Cheshire TIIG Research Analyst)

Centre for Public Health, 2<sup>nd</sup> Floor, Henry Cotton Campus, 15-21 Webster Street, Liverpool, L17 3ET

Tel: 0151 231 4500 or Email: [j.s.brizell@ljmu.ac.uk](mailto:j.s.brizell@ljmu.ac.uk)

For enquiries please contact Val Upton: [v.a.upton@ljmu.ac.uk](mailto:v.a.upton@ljmu.ac.uk)

Website: [www.tiig.info](http://www.tiig.info) (please note data requests should be made through the website)