



TIIG
INJURY SURVEILLANCE IN THE NORTH WEST OF ENGLAND

ARROWE PARK HOSPITAL EMERGENCY DEPARTMENT

MONTHLY BULLETIN: OCTOBER 2013 TO SEPTEMBER 2014

This bulletin provides a breakdown of all injury attendances to Arrowe Park Hospital Emergency Department (ED) between October 2013 and September 2014.

During this twelve month period, there were 36,240 injury attendances to the ED. The month with the highest number of attendances, calculated as a daily average, was July 2014 (113 per day) compared to January 2014, the month with the fewest (83 per day; **Figure 1**).

There were more male injury attendances than female presenting at Arrowe Park ED (52%; **Figure 1**). **Figure 2** presents the age group of injury attendances. Attendances were highest for those aged between 30 and 59 years (29%).

Table 1 details the injury group of attendees to Arrowe Park Hospital ED between October 2013 and September 2014. Falls were the most prevalent cause of injury, accounting for over four in ten (43%) attendances. Just under a fifth (18%) of injury attendances were recorded as other injury and 12% were as a result of the attendee having been struck.

Table 2 illustrates the source of referral for patients presenting with injuries. The majority (91%) of injury attendees self-referred.

Table 3 presents injury attendances by incident location. A third (33%) of injuries occurred in a public place, whilst close to three in ten (29%) occurred in the home.

Table 4 shows the discharge method of injury attendances. Just under half (49%) of attendees were discharged without requiring any follow-up treatment, whilst over one in eight (13%) were admitted to hospital. Just over one in ten (11%) were discharged to the fracture clinic and exactly one in ten (10%) required follow-up treatment to be provided by their General Practitioner (GP).

Assault attendances

Between October 2013 and September 2014, 1,337 assault attendees presented at Arrowe Park ED. Attendees were mainly male (69%) and half (50%) were aged between 15 and 29 years.

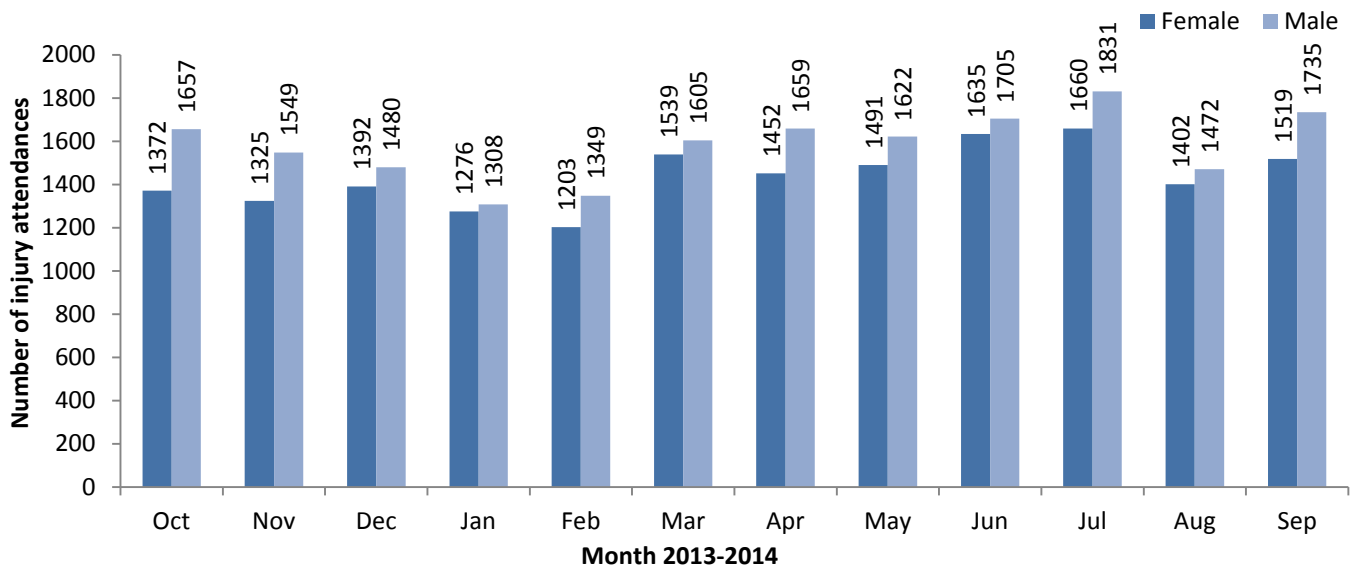
Just over a third (34%) of assaults occurred in a public place, 16% occurred in the home and 15% occurred in a street or road (**Table 5**).

Table 6 gives the geographical location of assault incidents. Close to three in ten (29%) assaults occurred in Birkenhead town centre.

The majority (58%) of assault victims reported being attacked by one attacker (**Table 7**).

Figure 3 provides details on whether or not injury attendees had consumed alcohol within the three hours prior to the incident. The majority of injury attendees (91%) had not consumed alcohol; however, for assault attendees, 52% reported that they had consumed alcohol.

Figure 1: ED injury attendances by gender and month, October 2013 to September 2014[^]



[^] There were <5 records where the gender was unknown; these have been omitted from the chart.

Figure 2: ED injury attendances by age group and month, October 2013 to September 2014

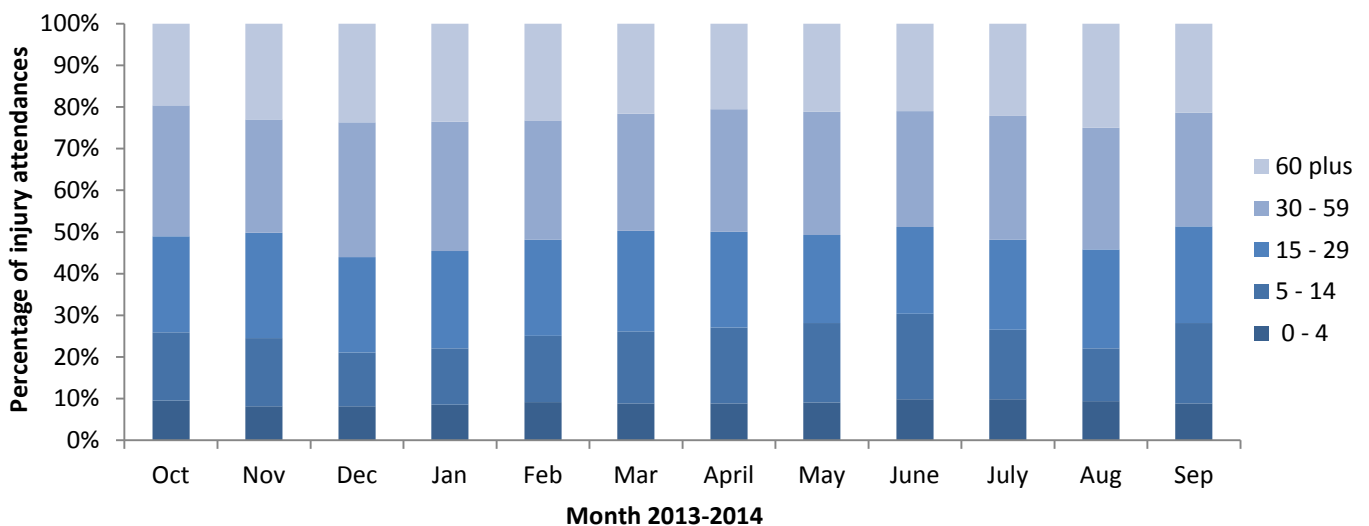


Table 1: ED injury attendances by injury group and month, October 2013 to September 2014¹

Injury group	Oct	Nov	Dec	Jan	Feb	Mar	Apr	May	Jun	Jul	Aug	Sep	Total	%
Fall	1285	1193	1214	1103	1130	1310	1330	1399	1541	1520	1206	1319	15550	43%
Other injury	466	407	480	459	398	542	628	553	671	815	621	691	6731	18%
Struck	393	373	363	297	328	363	383	381	376	390	307	363	4317	12%
Wound or cut	220	189	213	162	169	224	214	205	225	258	234	226	2539	7%
Sports injury	230	251	148	172	179	278	155	153	147	132	133	281	2259	6%
Road traffic collision	178	185	176	186	150	165	163	184	150	138	143	133	1951	5%
Assault	108	125	136	83	94	118	116	103	116	115	104	119	1337	4%
Deliberate self-harm	57	57	58	44	27	61	42	49	31	42	43	39	550	2%
Burn/scald	43	40	35	27	19	19	25	29	32	28	32	35	364	1%
Bite	22	20	24	29	21	35	34	29	27	30	30	34	335	1%
Ingestion	19	17	19	16	25	26	15	<25	20	<25	19	9	227	1%
Inhalation	<10	<20	<10	***	<15	***	<10	6	***	0	***	***	62	0%
Non fire burn/scald	***	***	***	***	***	***	***	***	***	***	***	***	18	0%
Total	3029	2875	2872	2584	2552	3144	3111	3113	3340	3491	2875	3254	36240	100%

¹ Please note that all numbers less than five have been suppressed (with ***) in line with patient confidentiality. If there is only one number less than five in a category then two numbers have been suppressed to prevent back calculations from totals.

Table 2: ED injury attendances by source of referral and month, October 2013 to September 2014²

Source of referral	Oct	Nov	Dec	Jan	Feb	Mar	Apr	May	Jun	Jul	Aug	Sep	Total	%
Self-referral	2741	2651	2624	2354	2307	2837	2829	2799	3076	3162	2642	3007	33029	91%
Other	134	94	82	50	80	91	85	124	93	135	91	75	1134	3%
Emergency services	57	68	73	104	79	120	71	104	86	111	75	96	1044	3%
Health care provider	35	29	40	22	43	38	54	38	38	32	37	38	444	1%
Police	14	18	28	15	18	18	21	23	17	12	14	14	212	1%
Work	11	6	***	20	9	12	<30	14	11	23	11	8	153	0%
Educational establishment	23	***	18	10	11	21	19	<10	<20	11	0	10	144	0%
GP	14	6	***	7	***	5	6	5	***	***	5	<10	67	0%
Unknown	0	***	***	***	***	***	***	***	0	***	0	0	<15	0%
Local authority	0	0	0	***	0	***	0	0	0	0	0	***	***	0%
Total	3029	2875	2872	2584	2552	3144	3111	3113	3340	3491	2875	3254	36240	100%

Table 3: ED injury attendances by incident location and month, October 2013 to September 2014²

Incident location	Oct	Nov	Dec	Jan	Feb	Mar	Apr	May	Jun	Jul	Aug	Sep	Total	%
Public place	852	955	999	776	846	1055	1096	1000	1131	1290	1050	1075	12125	33%
Home	941	829	928	809	771	887	899	870	928	946	804	784	10396	29%
Other	702	593	582	638	535	686	698	823	808	858	809	897	8629	24%
Sport	238	196	146	150	174	237	177	160	175	169	132	216	2170	6%
Educational establishment	179	183	112	112	125	176	105	129	174	104	0	160	1559	4%
Workplace	110	107	98	<100	96	96	<125	116	115	113	66	113	1250	3%
Unknown	***	<10	<10	***	***	***	9	8	***	<10	<10	***	61	0%
Sea/waterway	***	5	***	0	***	***	***	7	<10	***	6	5	41	0%
Road traffic accident	***	***	0	0	***	***	0	0	0	0	***	***	9	0%
Total	3029	2875	2872	2584	2552	3144	3111	3113	3340	3491	2875	3254	36240	100%

Table 4: ED injury attendances by discharge method and month, October 2013 to September 2014^{5,2}

Discharge method	Oct	Nov	Dec	Jan	Feb	Mar	Apr	May	Jun	Jul	Aug	Sep	Total	%
Discharged - no follow-up	1603	1426	1360	1268	1264	1590	1491	1593	1628	1669	1301	1619	17812	49%
Admitted	358	414	447	389	338	433	425	379	384	437	466	404	4874	13%
Discharged - fracture clinic	338	303	312	273	272	343	375	353	399	405	349	410	4132	11%
Discharged - GP follow-up	242	264	294	254	280	291	301	295	313	353	285	321	3493	10%
Left department before assessment	71	77	54	38	59	87	93	113	157	141	75	87	1052	3%
Discharged - adult ED clinic	67	66	81	74	82	84	82	68	88	96	88	78	954	3%
Discharged - other	95	92	101	75	87	85	76	51	80	83	61	60	946	3%
Discharged - GP nurse	80	71	70	62	44	51	69	58	88	91	75	67	826	2%
Discharged - paediatric ED	34	41	34	43	36	54	54	43	51	49	25	54	518	1%
Left department	23	21	27	15	16	13	33	20	39	39	36	28	310	1%
Discharged - walk-in centre	22	13	13	21	17	34	21	43	22	32	40	21	299	1%
Discharged - maxillary/facial	23	25	24	19	14	26	20	29	24	18	14	24	260	1%
Discharged - ear, nose and throat	23	29	17	16	15	23	20	21	21	11	13	30	239	1%
Transferred to other HCP	16	22	20	19	12	15	13	18	23	23	23	19	223	1%
Discharged - physiotherapy	18	<10	12	12	8	13	18	13	<10	15	15	9	150	0%
Unknown	16	***	<10	6	<10	***	<20	16	13	29	<10	23	146	0%
Died in department	0	0	***	0	***	***	***	0	***	0	***	0	6	0%
Total	3029	2875	2872	2584	2552	3144	3111	3113	3340	3491	2875	3254	36240	100%

⁵ HCP = Health Care Provider.

² Please note that all numbers less than five have been suppressed (with ***) in line with patient confidentiality. If there is only one number less than five in a category then two numbers have been suppressed to prevent back calculations from totals.

ASSAULTS

Table 5: ED assault attendances by incident location and month, October 2013 to September 2014³

Incident location	Oct	Nov	Dec	Jan	Feb	Mar	Apr	May	Jun	Jul	Aug	Sep	Total	%
Public space	42	36	37	26	18	39	38	33	52	45	50	39	455	34%
Home	14	24	26	18	16	12	24	13	13	21	14	16	211	16%
Street/road	17	23	26	9	15	13	15	14	16	10	14	24	196	15%
Other	6	13	15	11	13	14	11	15	12	14	10	15	149	11%
Public house	7	12	10	***	11	8	9	9	7	6	***	***	89	7%
Night club	***	***	6	***	6	8	7	8	5	6	***	6	64	5%
Workplace	5	5	***	8	5	5	***	***	***	***	***	8	53	4%
Public park	***	***	6	***	***	8	6	***	5	6	***	***	50	4%
School	***	5	***	0	***	6	***	***	***	***	0	***	25	2%
Railway station	***	0	***	0	***	***	0	***	***	***	***	0	12	1%
Leisure facility	***	0	***	***	0	***	***	0	0	0	***	***	11	1%
On public transport	***	***	***	0	0	0	***	0	0	0	0	***	5	0%
Shops	***	0	***	0	***	0	0	0	0	0	***	***	5	0%
Unknown	***	0	0	0	0	0	0	0	0	***	***	***	***	0%
Car park	0	0	0	0	***	0	***	0	0	0	0	0	***	0%
Details withheld by patient	0	0	***	0	0	0	0	***	0	0	0	0	***	0%
Hospital	***	0	0	0	0	***	0	0	0	0	0	***	***	0%
Total	108	125	136	83	94	118	116	103	116	115	104	119	1337	100%

Table 6: ED assault attendances by geographical location of assault and month, October 2013 to September 2014³

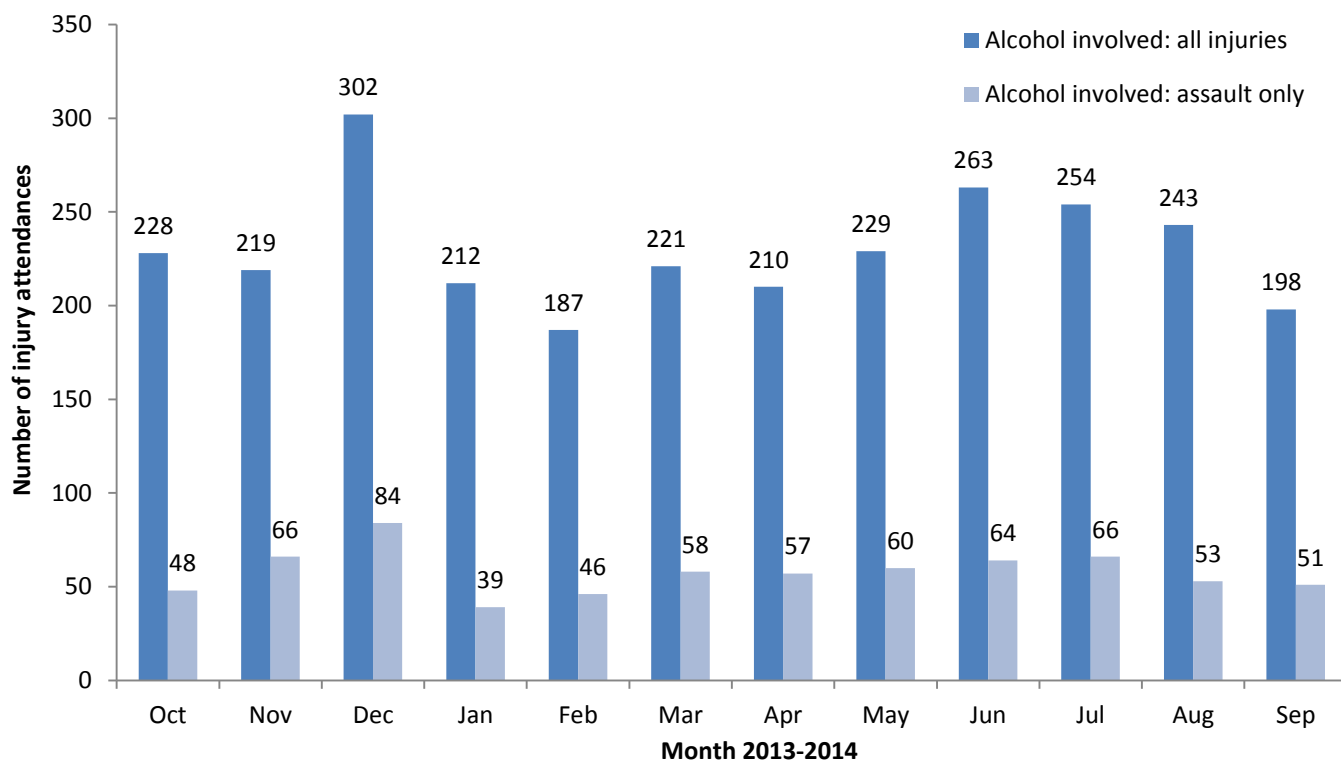
Geographical assault location	Oct	Nov	Dec	Jan	Feb	Mar	Apr	May	Jun	Jul	Aug	Sep	Total	%
Birkenhead centre	34	35	40	22	22	31	24	28	38	37	38	40	389	29%
Wallasey/Seacombe	8	16	22	19	15	15	20	10	21	8	12	16	182	14%
Other	10	15	9	7	10	12	9	10	12	15	9	8	126	9%
Bidston/Prenton/Oxton	9	11	8	6	6	12	7	10	9	12	7	11	108	8%
New Ferry/Rock Ferry	6	10	15	7	13	9	6	7	10	7	10	6	106	8%
Greasby/Upton/Arrowe Park	11	7	5	***	***	8	15	6	5	5	***	11	81	6%
Liverpool city centre	8	9	8	***	11	7	***	8	***	7	8	6	79	6%
Moreton/Leasowe	***	***	***	7	***	6	8	5	8	***	8	5	59	4%
New Brighton	7	***	5	***	***	***	6	***	***	***	***	***	41	3%
Bromborough/Eastham	***	7	***	***	***	***	***	***	***	6	***	6	40	3%
Bebington	***	***	6	0	***	***	5	0	***	***	***	***	28	2%
Heswall/Pensby/Thingwall	***	***	5	0	***	***	5	5	0	***	***	***	28	2%
Neston/Parkgate	***	***	***	***	***	***	***	5	***	***	0	***	23	2%
Meols/Frankby/Hoylake	***	0	***	***	***	***	***	0	***	0	***	***	14	1%
West Kirby	***	***	0	0	***	***	***	***	0	***	0	***	13	1%
Refused to answer	***	***	***	0	0	***	***	***	***	0	0	0	10	1%
Ellesmere Port/Cheshire Oaks	0	0	0	0	0	0	***	***	0	0	0	***	<10	0%
Unknown	***	0	0	0	0	0	0	0	0	***	***	***	***	0%
Total	108	125	136	83	94	118	116	103	116	115	104	119	1337	100%

³ Please note that all numbers less than five have been suppressed (with ***) in line with patient confidentiality. If there is only one number less than five in a category then two numbers have been suppressed to prevent back calculations from totals.

Table 7: ED assault attendances by number of attackers and month, October 2013 to September 2014⁴

Number of attackers	Oct	Nov	Dec	Jan	Feb	Mar	Apr	May	Jun	Jul	Aug	Sep	Total	%
1 attacker	65	76	74	54	50	70	59	66	66	61	56	73	770	58%
More than 2 attackers	26	34	32	12	21	34	42	21	30	22	23	28	325	24%
2 attackers	11	8	17	11	17	<15	<10	7	7	20	16	9	139	10%
Unknown	6	7	13	6	6	***	<10	9	13	12	9	9	103	8%
Total	108	125	136	83	94	118	116	103	116	115	104	119	1337	100%

Figure 3: ED injury and assault attendances by whether alcohol had been consumed in the three hours prior to the incident and month, October 2013 to September 2014



⁴ Please note that all numbers less than five have been suppressed (with ***) in line with patient confidentiality. If there is only one number less than five in a category then two numbers have been suppressed to prevent back calculations from totals.