

Published April 2008

Dan Hungerford (TIIG Analyst) and Zara Anderson (TIIG Project Lead)

Centre for Public Health, Liverpool John Moores University, Liverpool, L3 2AY

Tel: 0151 231 4417/4505 or Email: d.j.hungerford@ljmu.ac.uk or z.a.anderson@ljmu.ac.uk

Website: www.nwpho.org.uk/ait (please note data requests should now be made through the website)

This bulletin provides a breakdown of all trauma¹ attendances at Arrowe Park Accident and Emergency (A&E) department between April 2007 and March 2008.

Figure 1 illustrates the number of trauma attendances by month of attendance. Trauma attendance peaked in September, with December having the least number of trauma attendances.

Figure 1: Total number of trauma attendances by month, April 2007 to March 2008

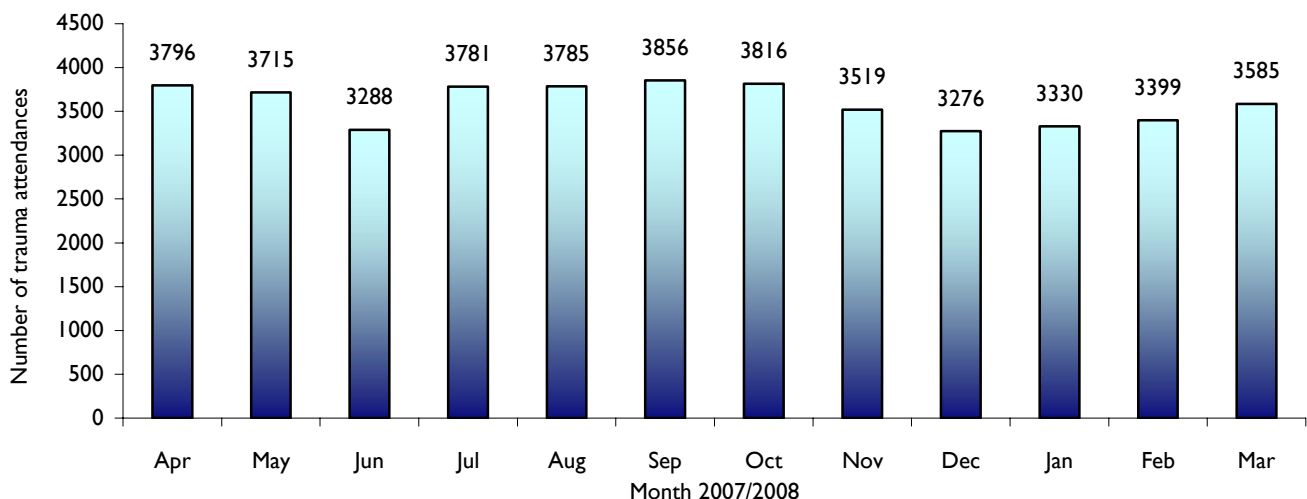
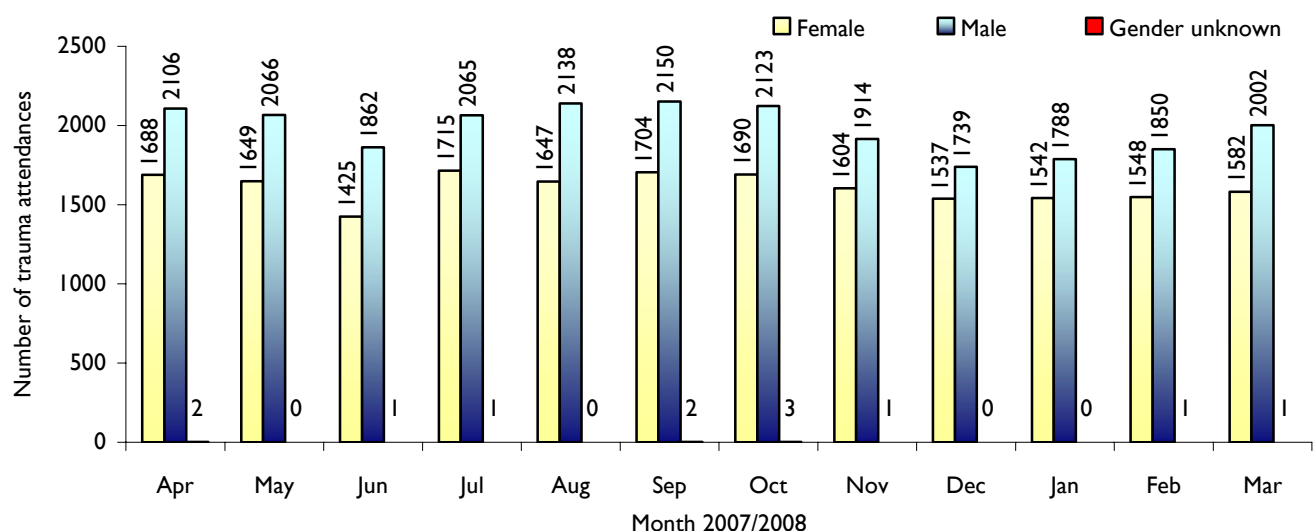


Figure 2 illustrates trauma attendances by gender. For all months there were more male trauma attendances than female presenting at Arrowe Park A&E department.

Figure 2: Gender of trauma attendances by month, April 2007 to March 2008



¹Trauma refers to all A&E attendances presenting as a result of an accident or intentional/unintentional injury.

Trauma attendances were more likely to be aged 15 to 59 years old (Figure 3).

Figure 3: Age group of trauma attendances by month, April 2007 to March 2008

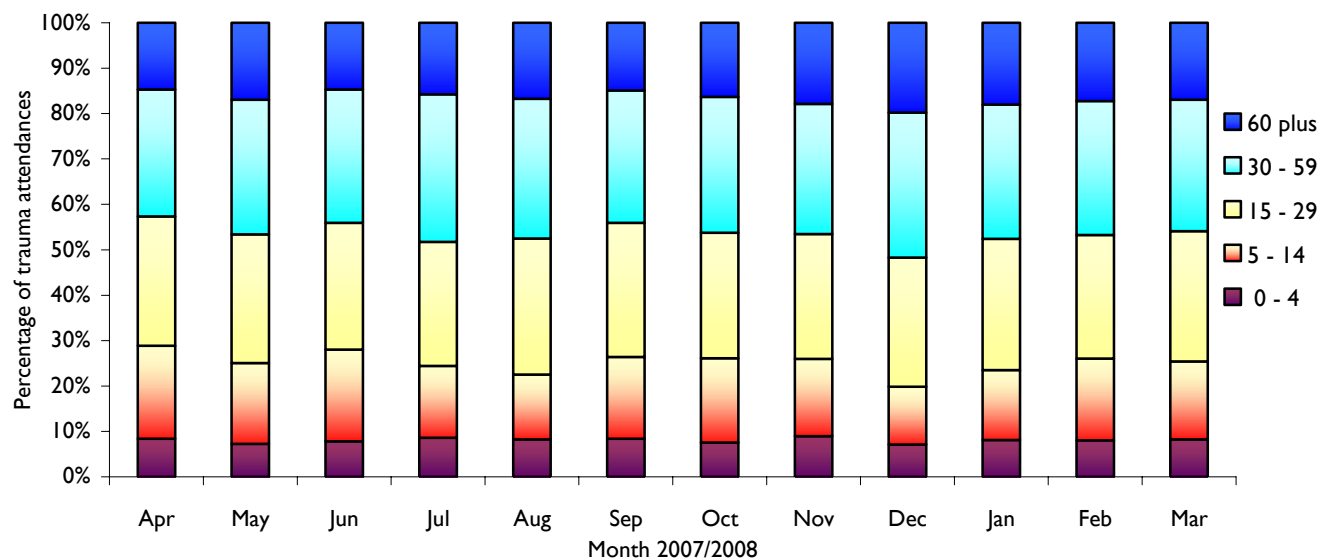


Table 1 details injury group of trauma attendances. The most common cause of injury was by a fall, accounting for 42% of all trauma attendances.

Table 1: Trauma attendances by injury group, April 2007 to March 2008

| Injury Group | Apr | May | Jun | Jul | Aug | Sep | Oct | Nov | Dec | Jan | Feb | Mar | Total | % |
|-----------------------|------|------|------|------|------|------|------|------|------|------|------|------|-------|-----|
| Fall | 1693 | 1596 | 1341 | 1564 | 1583 | 1651 | 1574 | 1470 | 1383 | 1370 | 1366 | 1354 | 17945 | 42 |
| Struck | 519 | 622 | 492 | 589 | 631 | 589 | 633 | 574 | 495 | 464 | 423 | 499 | 6530 | 15 |
| Road traffic accident | 293 | 301 | 328 | 356 | 305 | 336 | 328 | 364 | 342 | 313 | 289 | 321 | 3876 | 9 |
| Other accident | 285 | 232 | 220 | 302 | 219 | 324 | 301 | 303 | 294 | 289 | 528 | 518 | 3815 | 9 |
| Wound/cut | 310 | 346 | 347 | 334 | 363 | 323 | 303 | 268 | 301 | 300 | 254 | 277 | 3726 | 9 |
| Assault | 262 | 220 | 207 | 215 | 256 | 168 | 209 | 177 | 178 | 196 | 185 | 182 | 2455 | 6 |
| Sports injury | 202 | 162 | 147 | 138 | 172 | 211 | 233 | 149 | 96 | 192 | 164 | 223 | 2089 | 5 |
| Deliberate self harm | 90 | 111 | 100 | 110 | 87 | 79 | 96 | 84 | 83 | 70 | 65 | 85 | 1060 | 2 |
| Bite | 48 | 37 | 41 | 65 | 73 | 59 | 40 | 31 | 28 | 34 | 27 | 33 | 516 | 1 |
| Burn/scald | 40 | 40 | 36 | 47 | 46 | 32 | 36 | 43 | 41 | 43 | 47 | 41 | 492 | 1 |
| Ingestion | 40 | 31 | 21 | 47 | 27 | 59 | 42 | 39 | 25 | 41 | 33 | 28 | 433 | 1 |
| Non fire burn/scald | 5 | 7 | 0 | 9 | 15 | 11 | 7 | 6 | 4 | 6 | 0 | 10 | 80 | 0 |
| Inhalation | 4 | 7 | 4 | 1 | 4 | 6 | 5 | 4 | 2 | 10 | 7 | 11 | 65 | 0 |
| Electrical | 2 | 2 | 1 | 1 | 0 | 4 | 3 | 2 | 3 | 0 | 2 | 2 | 22 | 0 |
| Stab | 1 | 1 | 1 | 2 | 3 | 2 | 0 | 3 | 0 | 2 | 1 | 0 | 16 | 0 |
| Drown/immersion | 0 | 0 | 1 | 0 | 0 | 1 | 5 | 1 | 0 | 0 | 0 | 0 | 8 | 0 |
| Non drown asphyxia | 0 | 0 | 1 | 0 | 0 | 0 | 0 | 0 | 1 | 0 | 6 | 0 | 8 | 0 |
| Glass | 2 | 0 | 0 | 0 | 1 | 0 | 1 | 0 | 0 | 0 | 1 | 1 | 6 | 0 |
| Firearm | 0 | 0 | 0 | 1 | 0 | 1 | 0 | 1 | 0 | 0 | 1 | 0 | 4 | 0 |
| Firework | 0 | 0 | 0 | 0 | 0 | 0 | 0 | 0 | 0 | 0 | 0 | 0 | 0 | 0 |
| Total | 3796 | 3715 | 3288 | 3781 | 3785 | 3856 | 3816 | 3519 | 3276 | 3330 | 3399 | 3585 | 43146 | 100 |

Table 2 shows the disposal method of trauma attendances. The majority (87%) of trauma attendances were discharged after treatment.

Table 2: Disposal method of trauma attendances, April 2007 to March 2008

| Discharge Method | Apr | May | Jun | Jul | Aug | Sep | Oct | Nov | Dec | Jan | Feb | Mar | Total | % |
|------------------|------|------|------|------|------|------|------|------|------|------|------|------|-------|-----|
| Admitted | 437 | 467 | 410 | 491 | 501 | 502 | 463 | 457 | 455 | 431 | 438 | 475 | 5527 | 13 |
| Discharged | 3359 | 3248 | 2878 | 3290 | 3284 | 3354 | 3353 | 3062 | 2821 | 2899 | 2961 | 3110 | 37619 | 87 |
| Total | 3796 | 3715 | 3288 | 3781 | 3785 | 3856 | 3816 | 3519 | 3276 | 3330 | 3399 | 3585 | 43146 | 100 |

Table 3 illustrates injury group of trauma attendances for the 0 to 4 and 60 plus age groups. During April 2007 to March 2008 falls accounted for the highest group of trauma attendances for both age groups, accounting for 48% and 71% of child and older adult injuries respectively.

Table 3: Trauma attendances aged 0 to 4 and 60 plus by injury group, April 2007 to March 2008*

| Injury Group | Aged 0 - 4 | | Aged 60 plus | |
|-----------------------|------------|-----|--------------|-----|
| | | | | |
| Assault | 3 | 0 | 38 | 1 |
| Bite | 50 | 1 | 83 | 1 |
| Burn/scald | 111 | 3 | 38 | 1 |
| Deliberate self harm | 0 | 0 | 42 | 1 |
| Electrical | 3 | 0 | 3 | 0 |
| Fall | 1669 | 48 | 5076 | 71 |
| Ingestion | 190 | 5 | 27 | 0 |
| Inhalation | 2 | 0 | 12 | 0 |
| Non drown asphyxia | 2 | 0 | 0 | 0 |
| Non fire burn/scald | 74 | 2 | 9 | 0 |
| Other accident | 480 | 14 | 427 | 6 |
| Road traffic accident | 112 | 3 | 308 | 4 |
| Sports injury | 2 | 0 | 21 | 0 |
| Stab | 0 | 0 | 1 | 0 |
| Struck | 517 | 15 | 500 | 7 |
| Wound/cut | 262 | 8 | 584 | 8 |
| Total | 3477 | 100 | 7169 | 100 |

Table 4 illustrates the location where assaults occurred for patients presenting with assault-related injuries. The primary locations for assaults were street/road (33%), public space (31%) and domestic violence/home (16%).

Table 4: Assault attendances by general location of incident, April 2007 to March 2008*

| Assault location | Apr | May | Jun | Jul | Aug | Sep | Oct | Nov | Dec | Jan | Feb | Mar | Total | % |
|-----------------------------|-----|-----|-----|-----|-----|-----|-----|-----|-----|-----|-----|-----|-------|-----|
| Street/road | 99 | 76 | 38 | 84 | 91 | 45 | 60 | 65 | 65 | 69 | 52 | 73 | 817 | 33 |
| Public space | 91 | 71 | 88 | 50 | 76 | 59 | 84 | 29 | 59 | 55 | 53 | 43 | 758 | 31 |
| Domestic violence/home | 36 | 34 | 36 | 35 | 37 | 32 | 21 | 39 | 17 | 37 | 32 | 26 | 382 | 16 |
| Public house | 8 | 8 | 13 | 18 | 14 | 11 | 12 | 16 | 10 | 17 | 15 | 15 | 157 | 6 |
| Night club | 9 | 7 | 1 | 3 | 10 | 5 | 5 | 12 | 12 | 6 | 3 | 7 | 80 | 3 |
| Public park | 8 | 4 | 8 | 10 | 12 | 6 | 7 | 4 | 3 | 1 | 2 | 2 | 67 | 3 |
| Work | 2 | 5 | 9 | 4 | 7 | 4 | 8 | 3 | 5 | 1 | 6 | 8 | 62 | 3 |
| Other/unknown | 5 | 2 | 4 | 2 | 4 | 1 | 4 | 2 | 1 | 2 | 4 | 5 | 36 | 1 |
| School | 0 | 6 | 2 | 2 | 0 | 4 | 4 | 3 | 2 | 2 | 7 | 2 | 34 | 1 |
| Railway station | 0 | 3 | 1 | 0 | 0 | 0 | 2 | 2 | 1 | 3 | 4 | 0 | 16 | 1 |
| Leisure facility | 2 | 1 | 0 | 3 | 2 | 0 | 0 | 0 | 1 | 0 | 5 | 1 | 15 | 1 |
| Shop/shopping centre | 0 | 2 | 1 | 2 | 1 | 0 | 1 | 1 | 0 | 0 | 0 | 0 | 8 | 0 |
| Car park | 0 | 0 | 3 | 2 | 1 | 1 | 0 | 0 | 0 | 0 | 0 | 0 | 7 | 0 |
| Public transport | 0 | 0 | 3 | 0 | 0 | 0 | 1 | 0 | 0 | 2 | 1 | 0 | 7 | 0 |
| Bus station | 1 | 0 | 0 | 0 | 0 | 0 | 0 | 0 | 1 | 1 | 1 | 0 | 4 | 0 |
| Hospital | 1 | 1 | 0 | 0 | 0 | 0 | 0 | 1 | 0 | 0 | 0 | 0 | 3 | 0 |
| Details withheld by patient | 0 | 0 | 0 | 0 | 0 | 0 | 0 | 0 | 1 | 0 | 0 | 0 | 1 | 0 |
| Football | 0 | 0 | 0 | 0 | 1 | 0 | 0 | 0 | 0 | 0 | 0 | 0 | 1 | 0 |
| Total | 262 | 220 | 207 | 215 | 256 | 168 | 209 | 177 | 178 | 196 | 185 | 182 | 2455 | 100 |

*Percentages may not add to one hundred due to rounding

Data for April 2007 to March 2008 highlighted that the primary location of assaults was Birkenhead Town Centre, accounting for almost a third (30%) of assault locations. Wallasey and Seacombe accounted for 14% of assault locations during this period (Table 5).

Table 5: Assault attendances by location of incident, April 2007 to March 2008

| Assault location | Apr | May | Jun | Jul | Aug | Sep | Oct | Nov | Dec | Jan | Feb | Mar | Total | % |
|------------------------------|------------|------------|------------|------------|------------|------------|------------|------------|------------|------------|------------|------------|-------------|------------|
| Birkenhead Town Centre | 75 | 63 | 54 | 66 | 76 | 50 | 67 | 59 | 58 | 56 | 56 | 63 | 743 | 30 |
| Wallasey/Seacombe | 41 | 28 | 30 | 28 | 30 | 32 | 30 | 29 | 16 | 31 | 29 | 27 | 351 | 14 |
| Bidston/Prenton/Oxton | 26 | 28 | 16 | 18 | 25 | 9 | 21 | 19 | 15 | 24 | 13 | 12 | 226 | 9 |
| New Ferry/Rock Ferry | 25 | 19 | 24 | 16 | 21 | 16 | 16 | 15 | 12 | 13 | 14 | 12 | 203 | 8 |
| Moreton/Leasowe | 11 | 20 | 13 | 15 | 19 | 10 | 12 | 11 | 11 | 5 | 14 | 9 | 150 | 6 |
| Refused to answer | 12 | 12 | 14 | 13 | 20 | 8 | 11 | 6 | 9 | 5 | 10 | 9 | 129 | 5 |
| Greasby/Upton/Arrowe Park | 11 | 8 | 16 | 11 | 9 | 5 | 9 | 7 | 9 | 12 | 8 | 10 | 115 | 5 |
| Liverpool City Centre | 19 | 7 | 8 | 5 | 7 | 8 | 6 | 9 | 12 | 8 | 10 | 11 | 110 | 4 |
| Bromborough | 7 | 6 | 12 | 4 | 9 | 3 | 6 | 5 | 7 | 11 | 7 | 5 | 82 | 3 |
| New Brighton | 10 | 7 | 3 | 10 | 10 | 8 | 10 | 2 | 2 | 7 | 4 | 5 | 78 | 3 |
| Bebington | 5 | 7 | 6 | 3 | 7 | 4 | 5 | 3 | 4 | 1 | 7 | 5 | 57 | 2 |
| Unknown | 4 | 2 | 1 | 5 | 6 | 3 | 3 | 0 | 12 | 7 | 2 | 4 | 49 | 2 |
| Heswall/Pensby/Thingwall | 7 | 2 | 2 | 7 | 7 | 3 | 4 | 3 | 0 | 5 | 3 | 3 | 46 | 2 |
| Meols/Frankby/Hoylake | 5 | 3 | 5 | 3 | 3 | 4 | 3 | 3 | 3 | 4 | 2 | 3 | 41 | 2 |
| Neston/Parkgate | 2 | 1 | 1 | 9 | 3 | 1 | 3 | 2 | 5 | 3 | 1 | 2 | 33 | 1 |
| West Kirkby | 1 | 7 | 1 | 0 | 2 | 2 | 2 | 2 | 2 | 2 | 3 | 2 | 26 | 1 |
| Ellesmere Port/Cheshire Oaks | 1 | 0 | 1 | 2 | 1 | 2 | 1 | 1 | 1 | 1 | 1 | 0 | 12 | 0 |
| Barnston | 0 | 0 | 0 | 0 | 1 | 0 | 0 | 1 | 0 | 0 | 0 | 0 | 2 | 0 |
| Hooton | 0 | 0 | 0 | 0 | 0 | 0 | 0 | 0 | 0 | 1 | 1 | 0 | 2 | 0 |
| Total | 262 | 220 | 207 | 215 | 256 | 168 | 209 | 177 | 178 | 196 | 185 | 182 | 2455 | 100 |

Table 6 shows the number of attackers involved in assaults requiring A&E treatment. Over half (58%) of assaults involved one attacker, yet a third (32%) involved two or more attackers.

Table 6: Assault attendances by number of attackers, April 2007 to March 2008

| Number of attackers | Apr | May | Jun | Jul | Aug | Sep | Oct | Nov | Dec | Jan | Feb | Mar | Total | % |
|---------------------|------------|------------|------------|------------|------------|------------|------------|------------|------------|------------|------------|------------|-------------|------------|
| 1 attacker | 137 | 125 | 123 | 131 | 149 | 94 | 121 | 125 | 116 | 109 | 102 | 96 | 1428 | 58 |
| 2 Attackers | 32 | 18 | 16 | 18 | 25 | 18 | 24 | 8 | 7 | 16 | 25 | 18 | 225 | 9 |
| >2 Attackers | 64 | 52 | 52 | 51 | 54 | 32 | 51 | 31 | 39 | 54 | 42 | 35 | 557 | 23 |
| Unknown | 29 | 25 | 16 | 15 | 28 | 24 | 13 | 13 | 16 | 17 | 16 | 33 | 245 | 10 |
| Total | 262 | 220 | 207 | 215 | 256 | 168 | 209 | 177 | 178 | 196 | 185 | 182 | 2455 | 100 |

Figure 4 shows the number of all trauma attendances and assault attendances only who had been drinking prior to the incident occurring. Between April 2007 and March 2008 7% (range: 6% to 9%) of trauma attendees had been drinking prior to the incident, compared with between 43% (range: 32% to 52%) of assault attendees only.

Figure 4: Alcohol related trauma attendance, all trauma and assaults only, April 2007 to March 2008

