

## Royal Liverpool Emergency Department Monthly Bulletin: July 2009 to June 2010

This bulletin provides a breakdown of all injury attendances at the Royal Liverpool Emergency Department (ED) between July 2009 and June 2010<sup>1</sup>. Between July 2009 and June 2010 there were 35,490 injury attendances, peaking in June (n=3,362), with February (n=2,573) having the fewest. **Figure 1** gives a breakdown of monthly injury attendances by gender, illustrating that for all months there were more male (54%) injury attendances than female presenting at the Royal Liverpool ED. The majority of injury attendances were made by people over the age of 14 years (**Figure 2**). The low number of injury attendances under the age of 15 presenting at the Royal Liverpool ED could possibly be due to the close proximity of a local children's ED (Alder Hey).

**Table 1** details the injury group of injury attendances. The majority (72%) of injury attendances have been classified as other injury. This category includes injuries such as head injuries and arm injuries, for example. Just less than three quarters (74%) of injuries occurred in the home (**Table 2**).

Most injury attendances (39%) were discharged from the ED and three in ten (31%) were admitted to hospital (**Table 3**).

### Assault questionnaire

The Royal Liverpool ED collects additional information on assault attendances and a summary of this data is

provided in this report<sup>2</sup>. More detailed information collected by staff at the Royal Liverpool ED on issues such as the specific location of assault (e.g. pub name/street), is provided by TIIG to local agencies such as Citysafe in a separate report to the one produced here.

Assault attendees presenting at the Royal Liverpool ED between July 2009 and June 2010 were mainly male (75%) and 60% were aged between 15 and 29 years.

**Table 4** shows that where data was collected, 47% of assault attendances had consumed alcohol within three hours prior to their attack. Over four-fifths (83%) of all assault locations were unknown during July 2009 to June 2010. Of those known, over half (57%) occurred on the street (**Table 5**).

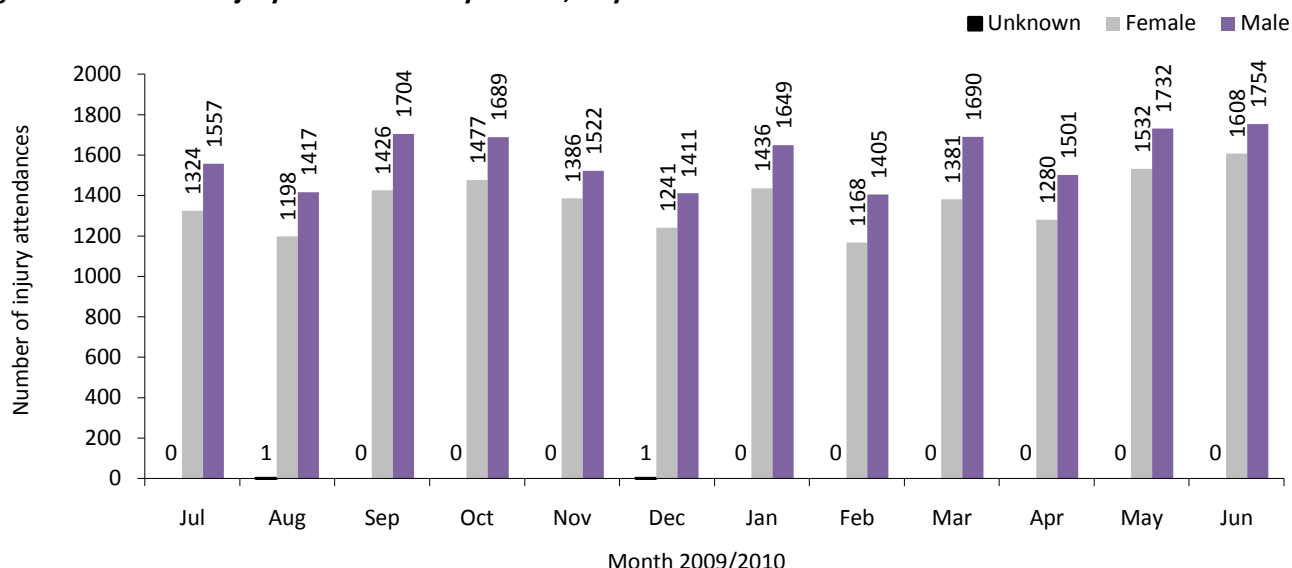
**Table 6** shows that the relationship between assault attendee and those involved in the assault was unknown in the majority (85%) of incidents. Where data was collected, over two-thirds (68%) of assault patients had been assaulted by a stranger.

**Table 7** shows method of attack. Of those known, 79% were attacked with a body part, such as a fist, 5% with a knife and 4% with a blunt object.

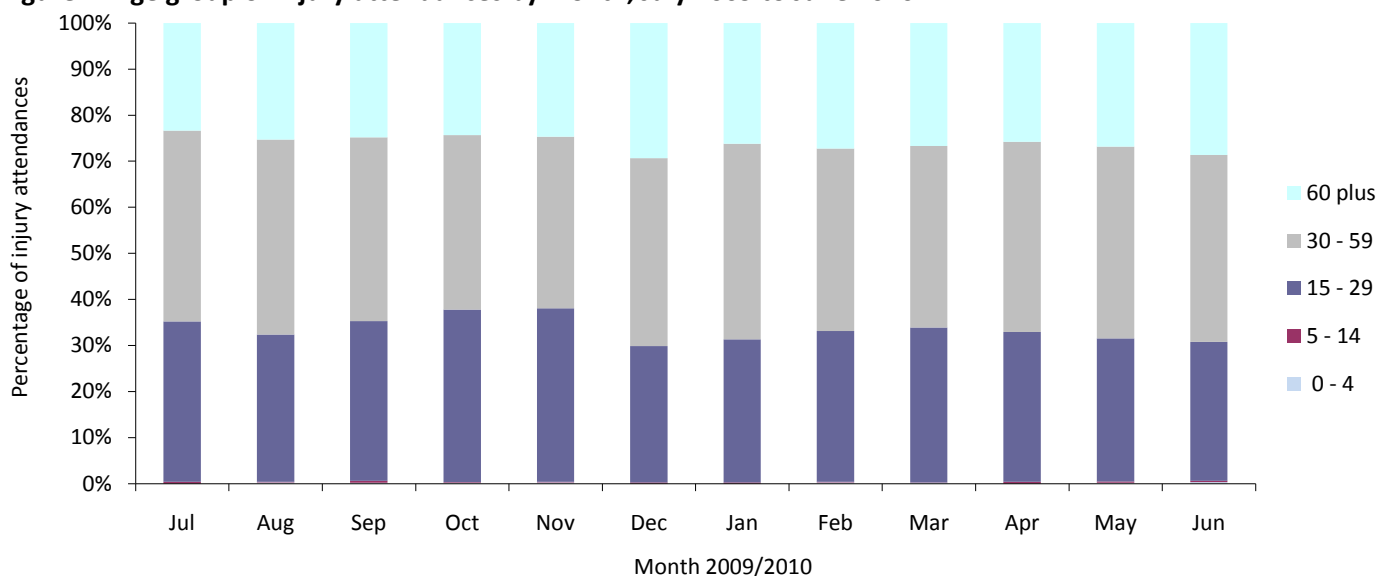
<sup>1</sup> Figures may not tally with previous reports because this report contains re-submitted data.

<sup>2</sup> Please note that although a patient may complete the assault patient questionnaire data may not be provided for each question as the patient can refuse or be unable to answer particular questions. Data provided in the following analyses represent those patients who completed each question, respectively.

**Figure 1: Gender of injury attendances by month, July 2009 to June 2010**



**Figure 2: Age group of injury attendances by month, July 2009 to June 2010**



**Table 1: Injury attendances by injury group and month, July 2009 to June 2010**

Injury group	Jul	Aug	Sep	Oct	Nov	Dec	Jan	Feb	Mar	Apr	May	Jun	Total	%
Other injury	2101	1820	2370	2330	2074	1763	2048	1839	2235	1930	2463	2624	25597	72
Fall	215	225	238	231	241	352	514	205	265	321	315	278	3400	10
Assault	217	213	220	250	224	179	200	173	191	203	188	181	2439	7
Overdose	121	138	89	117	106	105	99	105	100	120	106	99	1305	4
Sport injury	103	94	99	122	125	108	107	128	146	96	65	71	1264	4
RTC	88	83	81	75	104	111	80	95	86	77	80	77	1037	3
Burn	31	28	18	27	20	19	16	17	29	16	24	14	259	1
Self-harm	6	14	15	14	15	15	21	11	19	18	23	18	189	1
<b>Total</b>	<b>2882</b>	<b>2615</b>	<b>3130</b>	<b>3166</b>	<b>2909</b>	<b>2652</b>	<b>3085</b>	<b>2573</b>	<b>3071</b>	<b>2781</b>	<b>3264</b>	<b>3362</b>	<b>35490</b>	<b>100</b>

\*RTC=Road traffic collision, \*\*Firework injuries have been included under other injury because of low numbers.

**Table 2: Injury attendances by location and month, July 2009 to June 2010**

Location	Jul	Aug	Sep	Oct	Nov	Dec	Jan	Feb	Mar	Apr	May	Jun	Total	%
Home	2040	1858	2265	2281	2036	1820	2152	1933	2393	2098	2561	2706	26143	74
Public place	375	411	449	432	413	404	477	337	387	368	376	346	4775	13
Other	398	270	352	354	360	363	395	249	194	243	264	240	3682	10
Work	42	44	38	61	51	42	42	29	60	47	31	51	538	2
Leisure facility	27	32	26	38	49	23	19	25	37	25	32	19	352	1
<b>Total</b>	<b>2882</b>	<b>2615</b>	<b>3130</b>	<b>3166</b>	<b>2909</b>	<b>2652</b>	<b>3085</b>	<b>2573</b>	<b>3071</b>	<b>2781</b>	<b>3264</b>	<b>3362</b>	<b>35490</b>	<b>100</b>

**Table 3: Injury attendances by disposal method and month, July 2009 to June 2010<sup>3,4,5</sup>**

Disposal	Jul	Aug	Sep	Oct	Nov	Dec	Jan	Feb	Mar	Apr	May	Jun	Total	%
Discharged	1149	936	1170	1222	1122	1107	1256	987	1225	1094	1269	1265	13802	39
Admitted	812	830	945	959	919	790	897	826	917	891	1065	1008	10859	31
Discharge - follow-up by GP	282	234	268	302	261	213	225	211	246	215	251	370	3078	9
Left - before being treated	214	217	242	208	184	153	205	171	236	218	230	257	2535	7
Referred to fracture clinic	118	119	149	141	117	156	234	103	133	120	154	161	1705	5
Referred to other HCP	73	67	120	106	91	65	62	92	103	80	120	104	1083	3
Referred to ED clinic	55	65	61	61	60	53	67	35	57	40	55	66	675	2
Referred to OPD clinic	56	49	63	60	47	41	44	46	61	61	50	56	634	2
Other	54	42	45	47	52	26	37	46	46	18	19	31	463	1
Left - refused treatment	31	37	31	33	24	27	22	21	21	19	19	7	292	1
Transfer to other HCP	30	15	20	21	29	18	25	22	20	17	26	34	277	1
Patient died in department	***	***	7	***	***	***	***	6	***	***	***	***	45	0
Restored to ward	***	***	9	***	***	***	***	7	***	***	***	***	42	0
<b>Total</b>	<b>2882</b>	<b>2615</b>	<b>3130</b>	<b>3166</b>	<b>2909</b>	<b>2652</b>	<b>3085</b>	<b>2573</b>	<b>3071</b>	<b>2781</b>	<b>3264</b>	<b>3362</b>	<b>35490</b>	<b>100</b>

**Table 4: Assault attendees' alcohol consumption within three hours prior to the assault by month, July 2009 to June 2010**

Alcohol consumption	Jul	Aug	Sep	Oct	Nov	Dec	Jan	Feb	Mar	Apr	May	Jun	Total	%
Unknown	181	186	177	203	176	130	159	147	163	165	162	162	2011	82
No	19	15	18	24	19	21	19	13	16	22	15	11	212	9
Yes	15	10	22	20	23	26	20	11	10	13	9	6	185	8
Unable to answer	***	***	***	***	***	***	***	***	***	***	***	***	17	1
Refused to answer	***	***	***	***	***	***	***	***	***	***	***	***	14	1
<b>Total</b>	<b>217</b>	<b>213</b>	<b>220</b>	<b>250</b>	<b>224</b>	<b>179</b>	<b>200</b>	<b>173</b>	<b>191</b>	<b>203</b>	<b>188</b>	<b>181</b>	<b>2439</b>	<b>100</b>

**Table 5: Assault attendances by location of incident and month, July 2009 to June 2010**

Assault location	Jul	Aug	Sep	Oct	Nov	Dec	Jan	Feb	Mar	Apr	May	Jun	Total	%
Unknown	181	186	178	203	177	130	159	147	163	165	162	162	2013	83
Street	16	14	24	24	29	28	21	11	15	24	19	10	235	10
Your home	***	5	***	5	6	***	***	***	***	***	***	6	48	2
Bar/pub	7	***	***	***	6	8	5	6	***	***	***	***	47	2
Other	6	***	***	6	***	***	***	***	***	5	***	***	35	1
Someone else's home	***	***	***	***	***	***	***	***	***	***	***	***	18	1
Workplace	***	***	***	***	***	***	***	***	***	***	***	***	15	1
Club	***	***	***	***	***	***	***	***	***	***	***	***	13	1
Refused to answer	***	***	***	***	***	***	***	***	***	***	***	***	8	0
Unable to answer	***	***	***	***	***	***	***	***	***	***	***	***	7	0
<b>Total</b>	<b>217</b>	<b>213</b>	<b>220</b>	<b>250</b>	<b>224</b>	<b>179</b>	<b>200</b>	<b>173</b>	<b>191</b>	<b>203</b>	<b>188</b>	<b>181</b>	<b>2439</b>	<b>100</b>

**Table 6: Assault attendances by relationship with attacker and month, July 2009 to June 2010**

Relationship with attacker	Jul	Aug	Sep	Oct	Nov	Dec	Jan	Feb	Mar	Apr	May	Jun	Total	%
Unknown	181	191	185	208	181	136	161	151	170	172	163	164	2063	85
Stranger	17	17	16	24	31	29	25	13	15	23	20	12	242	10
Acquaintance/friend	6	***	10	***	***	***	***	***	***	***	***	***	39	2
Partner	***	***	***	***	***	5	***	***	***	***	***	***	23	1
Bouncer	5	***	***	***	***	***	***	***	***	***	***	***	17	1
Family member	***	***	***	***	***	***	***	***	***	***	***	***	13	1
Refused to answer	***	***	***	***	***	***	***	***	***	***	***	***	11	0
Ex-partner	***	***	***	***	***	***	***	***	***	***	***	***	9	0
Unable to answer	***	***	***	***	***	***	***	***	***	***	***	***	8	0
Work client/customer	***	***	***	***	***	***	***	***	***	***	***	***	7	0
Police	***	***	***	***	***	***	***	***	***	***	***	***	***	0
Work mate/colleague	***	***	***	***	***	***	***	***	***	***	***	***	***	0
<b>Total</b>	<b>217</b>	<b>213</b>	<b>220</b>	<b>250</b>	<b>224</b>	<b>179</b>	<b>200</b>	<b>173</b>	<b>191</b>	<b>203</b>	<b>188</b>	<b>181</b>	<b>2439</b>	<b>100</b>

<sup>3</sup> \*\*\* Please note that all numbers less than five have been suppressed in line with patient confidentiality and if there is only one number less than five in a category then two numbers will be suppressed at the next level (e.g. <6) in order to prevent back calculations from totals.

<sup>4</sup> OPD= out-patient department, HCP=health care provider.

<sup>5</sup> Please note percentages might not add to one hundred due to rounding.

**Table 7: Assault attendances by method of attack and month, July 2009 to June 2010**

Method of attack	Jul	Aug	Sep	Oct	Nov	Dec	Jan	Feb	Mar	Apr	May	Jun	Total	%
Unknown	181	190	179	206	179	135	159	150	164	165	164	165	2037	84
Body part (e.g. fist)	31	18	29	35	36	37	33	19	19	27	14	8	306	13
Other	***	***	5	***	***	***	***	***	***	***	6	***	31	1
Knife	***	***	***	***	***	***	***	***	***	***	***	***	18	1
Blunt object	***	***	***	***	***	***	6	***	***	***	***	***	14	1
Bottle	***	***	***	***	***	***	***	***	***	***	***	***	12	0
Refused to answer	***	***	***	***	***	***	***	***	***	***	***	***	7	0
Unable to answer	***	***	***	***	***	***	***	***	***	***	***	***	7	0
Glass	***	***	***	***	***	***	***	***	***	***	***	***	***	0
Firearm	***	***	***	***	***	***	***	***	***	***	***	***	***	0
<b>Total</b>	<b>217</b>	<b>213</b>	<b>220</b>	<b>250</b>	<b>224</b>	<b>179</b>	<b>200</b>	<b>173</b>	<b>191</b>	<b>203</b>	<b>188</b>	<b>181</b>	<b>2439</b>	<b>100</b>

Published September 2010  
Johnathan Rooney (TIIG Project Officer)  
Centre for Public Health, Liverpool John Moores University,  
3<sup>rd</sup> Floor, Henry Cotton Campus, 15-21 Webster Street, Liverpool, L3 2ET  
Tel: 0151 231 4513 Email: [j.rooney@ljmu.ac.uk](mailto:j.rooney@ljmu.ac.uk)  
Website: [www.tiig.info](http://www.tiig.info) (please note data requests should be made through the website)