

## Royal Liverpool Emergency Department Monthly Bulletin: October 2009 to September 2010

This bulletin provides a breakdown of all injury attendances at the Royal Liverpool Emergency Department (ED) between October 2009 and September 2010<sup>1</sup>. Between October 2009 and September 2010 there were 36,405 injury attendances, peaking in June (n=3,362), with February (n=2,573) having the fewest. **Figure 1** gives a breakdown of monthly injury attendances by gender, illustrating that for all months there were more male (54%) injury attendances than female presenting at the Royal Liverpool ED. The majority of injury attendances were made by people over the age of 14 years (**Figure 2**). The low number of injury attendances under the age of 15 presenting at the Royal Liverpool ED could possibly be due to the close proximity of a local children's ED (Alder Hey).

**Table 1** details the injury group of injury attendances. The majority (73%) of injury attendances have been classified as other injury. This category includes injuries such as head injuries and arm injuries, for example. Three quarters (75%) of injuries occurred in the home (**Table 2**).

Most injury attendances (39%) were discharged from the ED and three in ten (31%) were admitted to hospital (**Table 3**).

### Assault questionnaire

The Royal Liverpool ED collects additional information on assault attendances and a summary of this data is

provided in this report<sup>2</sup>. More detailed information collected by staff at the Royal Liverpool ED on issues such as the specific location of assault (e.g. pub name/street), is provided by TIIG to local agencies such as Citysafe in a separate report to the one produced here.

Assault attendees presenting at the Royal Liverpool ED between October 2009 and September 2010 were mainly male (75%) and 59% were aged between 15 and 29 years.

**Table 4** shows that where data was collected, 50% of assault attendances had consumed alcohol within three hours prior to their attack. Over four-fifths (81%) of all assault locations were unknown during October 2009 to September 2010. Of those known, over half (57%) occurred on the street (**Table 5**).

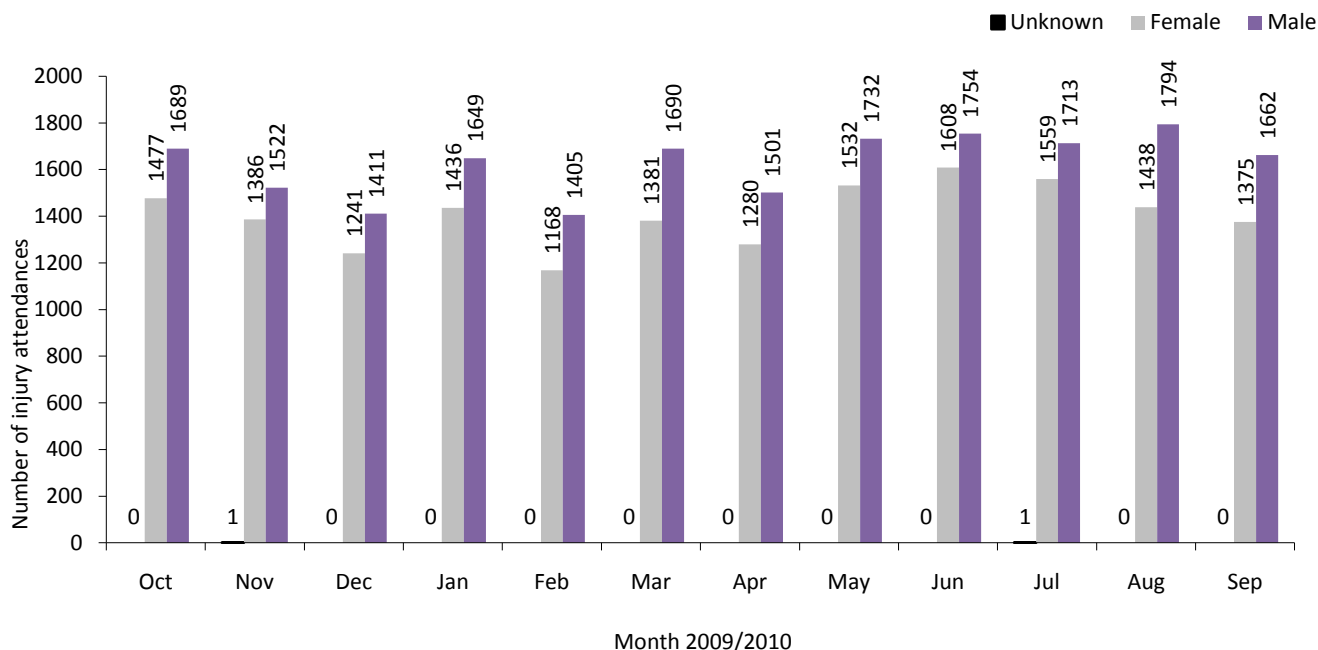
**Table 6** shows that the relationship between assault attendee and those involved in the assault was unknown in the majority (84%) of incidents. Where data was collected, two-thirds (66%) of assault patients had been assaulted by a stranger.

**Table 7** shows method of attack. Of those known, 73% were attacked with a body part, such as a fist, 5% with a bottle and 4% with a blunt object.

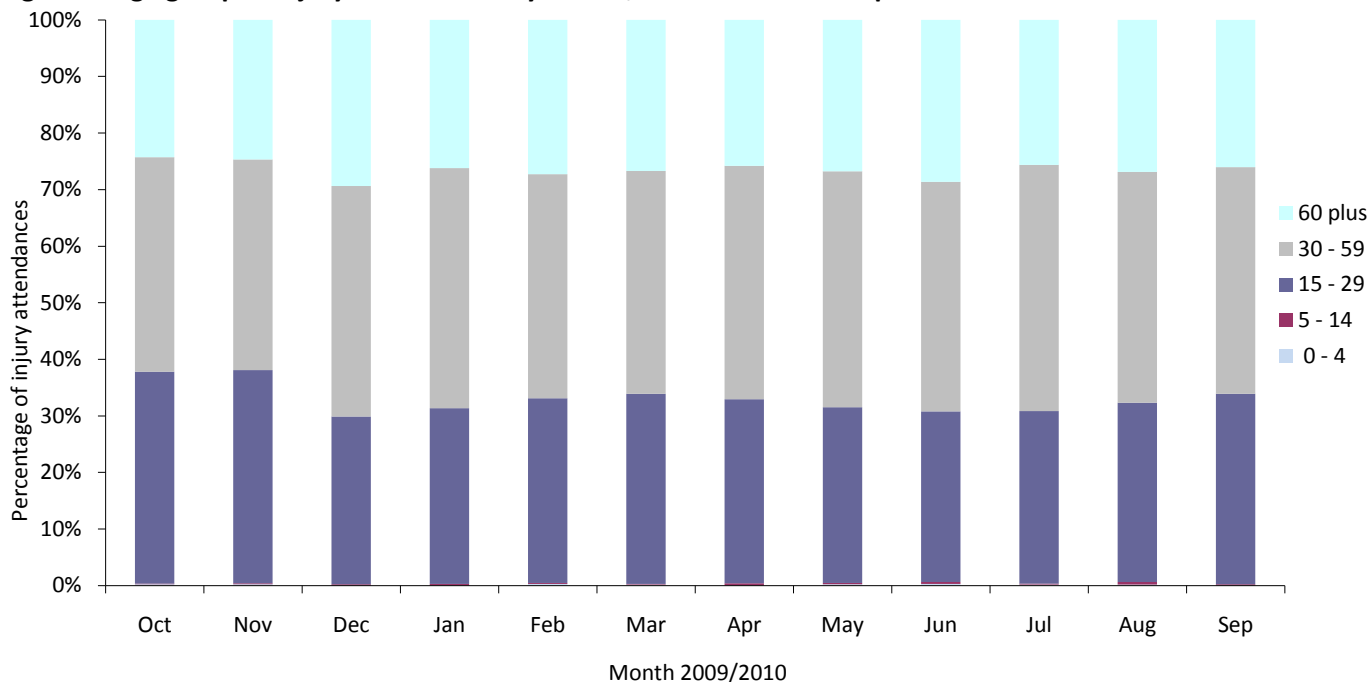
<sup>1</sup> Figures may not tally with previous reports because this report contains re-submitted data.

<sup>2</sup> Please note that although a patient may complete the assault patient questionnaire data may not be provided for each question as the patient can refuse or be unable to answer particular questions. Data provided in the following analyses represent those patients who completed each question, respectively.

**Figure 1: Gender of injury attendances by month, October 2009 to September 2010**



**Figure 2: Age group of injury attendances by month, October 2009 to September 2010**



**Table 1: Injury attendances by injury group and month, October 2009 to September 2010**

Injury group	Oct	Nov	Dec	Jan	Feb	Mar	Apr	May	Jun	Jul	Aug	Sep	Total	%
Other injury	2330	2074	1763	2048	1839	2235	1930	2463	2624	2460	2479	2235	26478	73
Fall	231	241	352	514	205	265	321	315	278	322	299	311	3654	10
Assault	250	224	179	200	173	191	203	188	181	198	193	163	2343	6
Overdose	117	106	105	99	105	100	120	106	99	104	90	125	1276	4
Sport injury	122	125	108	107	128	146	96	65	71	67	68	76	1179	3
RTC	75	104	111	80	95	86	77	80	77	80	68	76	1009	3
Burn	27	20	19	16	17	29	16	24	14	21	17	29	249	1
Self-harm	14	15	15	21	11	19	18	23	18	21	18	22	215	1
<b>Total</b>	<b>3166</b>	<b>2909</b>	<b>2652</b>	<b>3085</b>	<b>2573</b>	<b>3071</b>	<b>2781</b>	<b>3264</b>	<b>3362</b>	<b>3273</b>	<b>3232</b>	<b>3037</b>	<b>36405</b>	<b>100</b>

\*RTC=Road traffic collision, \*\*Firework injuries have been included under other injury because of low numbers.

**Table 2: Injury attendances by location and month, October 2009 to September 2010**

Location	Oct	Nov	Dec	Jan	Feb	Mar	Apr	May	Jun	Jul	Aug	Sep	Total	%
Home	2281	2036	1820	2152	1933	2393	2098	2561	2706	2454	2407	2305	27146	75
Public place	432	413	404	477	337	387	368	376	346	475	493	385	4893	13
Other	354	360	363	395	249	194	243	264	240	271	256	270	3459	9
Work	61	51	42	42	29	60	47	31	51	45	43	43	545	1
Leisure facility	38	49	23	19	25	37	25	32	19	28	33	34	362	1
<b>Total</b>	<b>3166</b>	<b>2909</b>	<b>2652</b>	<b>3085</b>	<b>2573</b>	<b>3071</b>	<b>2781</b>	<b>3264</b>	<b>3362</b>	<b>3273</b>	<b>3232</b>	<b>3037</b>	<b>36405</b>	<b>100</b>

**Table 3: Injury attendances by disposal method and month, October 2009 to September 2010<sup>3,4,5</sup>**

Disposal	Oct	Nov	Dec	Jan	Feb	Mar	Apr	May	Jun	Jul	Aug	Sep	Total	%	
Discharged	1222	1122	1107	1256	987	1225	1094	1269	1265	1393	1296	1056	14292	39	
Admitted	959	919	790	897	826	917	891	1065	1008	985	941	1031	11229	31	
Discharge - follow-up by GP	302	261	213	225	211	246	215	251	370	279	274	249	3096	9	
Left - before being treated	208	184	153	205	171	236	218	230	257	189	285	263	2599	7	
Referred to fracture clinic	141	117	156	234	103	133	120	154	161	151	155	148	1773	5	
Referred to other HCP	106	91	65	62	92	103	80	120	104	118	115	105	1161	3	
Referred to ED clinic	61	60	53	67	35	57	40	55	66	37	60	62	653	2	
Referred to OPD clinic	60	47	41	44	46	61	61	50	56	60	39	56	621	2	
Other	47	52	26	37	46	46	18	19	31	18	19	15	374	1	
Transfer to other HCP	21	29	18	25	22	20	17	26	34	21	23	23	279	1	
Left - refused treatment	33	24	27	22	21	21	19	19	7	18	19	24	254	1	
Patient died in department	***	***	***	8	6	***	***	***	***	***	***	6	5	45	0
Restored to ward	***	***	***	***	7	5	***	***	***	***	***	***	29	0	
<b>Total</b>	<b>3166</b>	<b>2909</b>	<b>2652</b>	<b>3085</b>	<b>2573</b>	<b>3071</b>	<b>2781</b>	<b>3264</b>	<b>3362</b>	<b>3273</b>	<b>3232</b>	<b>3037</b>	<b>36405</b>	<b>100</b>	

**Table 4: Assault attendees' alcohol consumption within three hours prior to the assault by month, October 2009 to September 2010**

Alcohol consumption	Oct	Nov	Dec	Jan	Feb	Mar	Apr	May	Jun	Jul	Aug	Sep	Total	%
Unknown	203	176	130	159	147	163	165	162	162	176	129	136	1908	81
Yes	20	23	26	20	11	10	13	9	6	16	36	13	203	9
No	24	19	21	19	13	16	22	15	11	5	24	13	202	9
Unable to answer	***	***	***	***	***	***	***	***	***	***	***	***	17	1
Refused to answer	***	***	***	***	***	***	***	***	***	***	***	***	13	1
<b>Total</b>	<b>250</b>	<b>224</b>	<b>179</b>	<b>200</b>	<b>173</b>	<b>191</b>	<b>203</b>	<b>188</b>	<b>181</b>	<b>198</b>	<b>193</b>	<b>163</b>	<b>2343</b>	<b>100</b>

**Table 5: Assault attendances by location of incident and month, October 2009 to September 2010**

Assault location	Oct	Nov	Dec	Jan	Feb	Mar	Apr	May	Jun	Jul	Aug	Sep	Total	%
Unknown	203	177	130	159	147	163	165	162	162	176	129	136	1909	81
Street	24	29	28	21	11	15	24	19	10	14	42	9	246	10
Bar/pub	***	6	8	5	6	***	***	***	***	***	5	***	45	2
Your home	5	6	***	***	***	***	***	***	6	***	***	6	46	2
Club	***	***	***	***	***	***	***	***	***	***	***	***	17	1
Other	6	***	***	***	***	***	5	***	***	***	***	***	26	1
Someone else's home	***	***	***	***	***	***	***	***	***	***	5	***	21	1
Workplace	***	***	***	***	***	***	***	***	***	***	***	***	16	1
Refused to answer	***	***	***	***	***	***	***	***	***	***	***	***	9	0
Unable to answer	***	***	***	***	***	***	***	***	***	***	***	***	8	0
<b>Total</b>	<b>250</b>	<b>224</b>	<b>179</b>	<b>200</b>	<b>173</b>	<b>191</b>	<b>203</b>	<b>188</b>	<b>181</b>	<b>198</b>	<b>193</b>	<b>163</b>	<b>2343</b>	<b>100</b>

<sup>3</sup> \*\*\* Please note that all numbers less than five have been suppressed in line with patient confidentiality and if there is only one number less than five in a category then two numbers will be suppressed at the next level (e.g. <6) in order to prevent back calculations from totals.

<sup>4</sup> OPD= out-patient department, HCP=health care provider.

<sup>5</sup> Please note percentages might not add to one hundred due to rounding.

**Table 6: Assault attendances by relationship with attacker and month, October 2009 to September 2010**

Relationship with attacker	Oct	Nov	Dec	Jan	Feb	Mar	Apr	May	Jun	Jul	Aug	Sep	Total	%
Unknown	208	181	136	161	151	170	172	163	164	178	135	145	1964	84
Stranger	24	31	29	25	13	15	23	20	12	14	39	7	252	11
Acquaintance/friend	***	***	***	***	***	***	***	***	***	***	11	5	39	2
Bouncer	***	***	***	***	***	***	***	***	***	***	***	***	14	1
Partner	***	***	5	***	***	***	***	***	***	***	***	***	23	1
Unable to answer	***	***	***	***	***	***	***	***	***	***	***	***	12	1
Ex-partner	***	***	***	***	***	***	***	***	***	***	***	***	7	0
Family member	***	***	***	***	***	***	***	***	***	***	***	***	10	0
Police	***	***	***	***	***	***	***	***	***	***	***	***	***	0
Refused to answer	***	***	***	***	***	***	***	***	***	***	***	***	11	0
Work client/customer	***	***	***	***	***	***	***	***	***	***	***	***	7	0
Work mate/colleague	***	***	***	***	***	***	***	***	***	***	***	***	1	0
<b>Total</b>	<b>250</b>	<b>224</b>	<b>179</b>	<b>200</b>	<b>173</b>	<b>191</b>	<b>203</b>	<b>188</b>	<b>181</b>	<b>198</b>	<b>193</b>	<b>163</b>	<b>2343</b>	<b>100</b>

**Table 7: Assault attendances by method of attack and month, October 2009 to September 2010**

Method of attack	Oct	Nov	Dec	Jan	Feb	Mar	Apr	May	Jun	Jul	Aug	Sep	Total	%
Unknown	206	179	135	159	150	164	165	164	165	177	130	140	1934	83
Body part (e.g. fist)	35	36	37	33	19	19	27	14	8	17	38	14	297	13
Blunt object	***	***	***	6	***	***	***	***	***	***	6	***	17	1
Bottle	***	***	***	***	***	***	***	***	***	***	6	***	20	1
Knife	***	***	***	***	***	***	***	***	***	***	***	***	15	1
Other	***	***	***	***	***	***	***	6	***	***	***	***	30	1
Unable to answer	***	***	***	***	***	***	***	***	***	***	5	***	12	1
Acquaintance/friend	***	***	***	***	***	***	***	***	***	***	***	***	***	0
Firearm	***	***	***	***	***	***	***	***	***	***	***	***	***	0
Glass	***	***	***	***	***	***	***	***	***	***	***	***	9	0
Refused to answer	***	***	***	***	***	***	***	***	***	***	***	***	8	0
<b>Total</b>	<b>250</b>	<b>224</b>	<b>179</b>	<b>200</b>	<b>173</b>	<b>191</b>	<b>203</b>	<b>188</b>	<b>181</b>	<b>198</b>	<b>193</b>	<b>163</b>	<b>2343</b>	<b>100</b>

Published December 2010  
 Jennifer Brizell (TIIG Project Officer)  
 Centre for Public Health, Liverpool John Moores University,  
 3<sup>rd</sup> Floor, Henry Cotton Campus, 15-21 Webster Street, Liverpool, L3 2ET  
 Tel: 0151 231 4500, Email: j.s.brizell@ljmu.ac.uk  
 Website: [www.tiig.info](http://www.tiig.info) (please note data requests should be made through the website)