

## Royal Liverpool Emergency Department Monthly Bulletin: January 2012 to December 2012

This bulletin provides a breakdown of all injury attendances at the Royal Liverpool Emergency Department (ED) between January and December 2012.

Between January and December 2012 there were 31,211 injury attendances, peaking in March (n=3,237), with April (n=2,246) having the fewest. **Figure 1** gives a breakdown of monthly injury attendances by gender, illustrating that for all months there were more male (54%) injury attendances than female presenting at the Royal Liverpool ED.

The majority of injury attendances were made by people over the age of 14 years, with the highest proportion (41%) being made by 30-59 year olds (**Figure 2**). The low number of injury attendances under the age of 15 presenting at the Royal Liverpool ED could possibly be due to the close proximity of a local children's ED (Alder Hey).

**Table 1** details the injury group of attendees. The majority (72%) of injury attendances have been classified as other injury. This category includes injuries such as head injuries and arm injuries. Almost three quarters (74%) of injuries occurred in the home (**Table 2**).

The disposal method of attendees can give an indication of the severity of the injury sustained. Over four in ten (46%) injury attendances were discharged from the ED and almost three in ten (28%) were admitted to hospital (**Table 3**).

### Assault questionnaire\*

The Royal Liverpool ED collects additional information on assault attendances and a summary of this data is provided in this report. More detailed information collected by staff at the Royal Liverpool ED on issues such as the specific location of assault (e.g. pub name/street), is provided by TIIG to local agencies such as Citysafe in a separate report to the one produced here.

There were 1,769 assault attendees presenting at the Royal Liverpool ED between January and December 2012. These were mainly male (73%) and 56% were aged between 15-29 years.

Where data was collected<sup>^</sup>, 62% of assault attendances had consumed alcohol within three hours prior to their attack (**Table 4**). Over eight in ten (81%) of all assault locations were unknown between January and December 2012. Of those known<sup>^</sup>, half (50%) occurred on the street (**Table 5**).

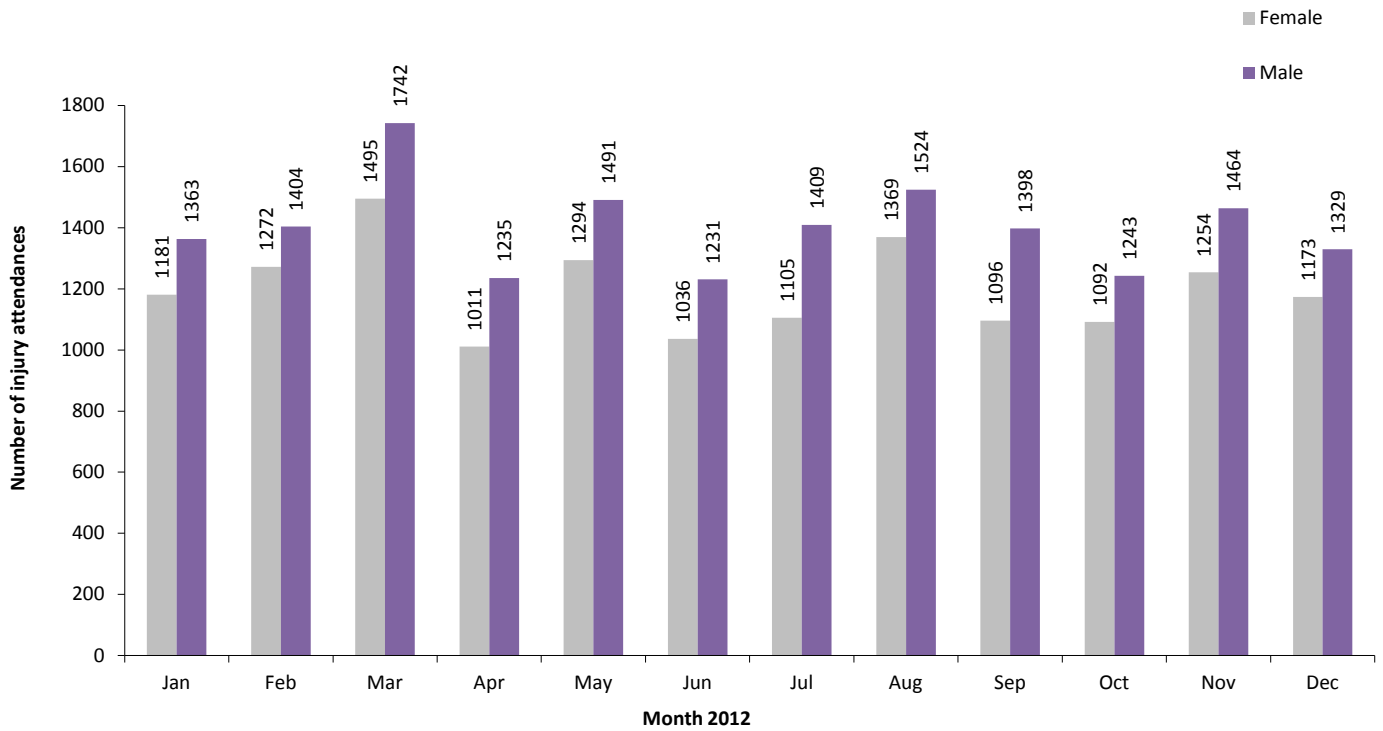
**Table 6** shows that the relationship between assault attendees and those involved in the assault was unknown in the majority (82%) of incidents. Where data was collected<sup>^</sup>, 70% of assault patients had been assaulted by a stranger and 12% by an acquaintance/friend.

**Table 7** shows the weapon used in the assaults. Of those with a known weapon type<sup>^</sup>, 70% were attacked with a body part, such as a fist, 10% with a knife and 6% with a bottle.

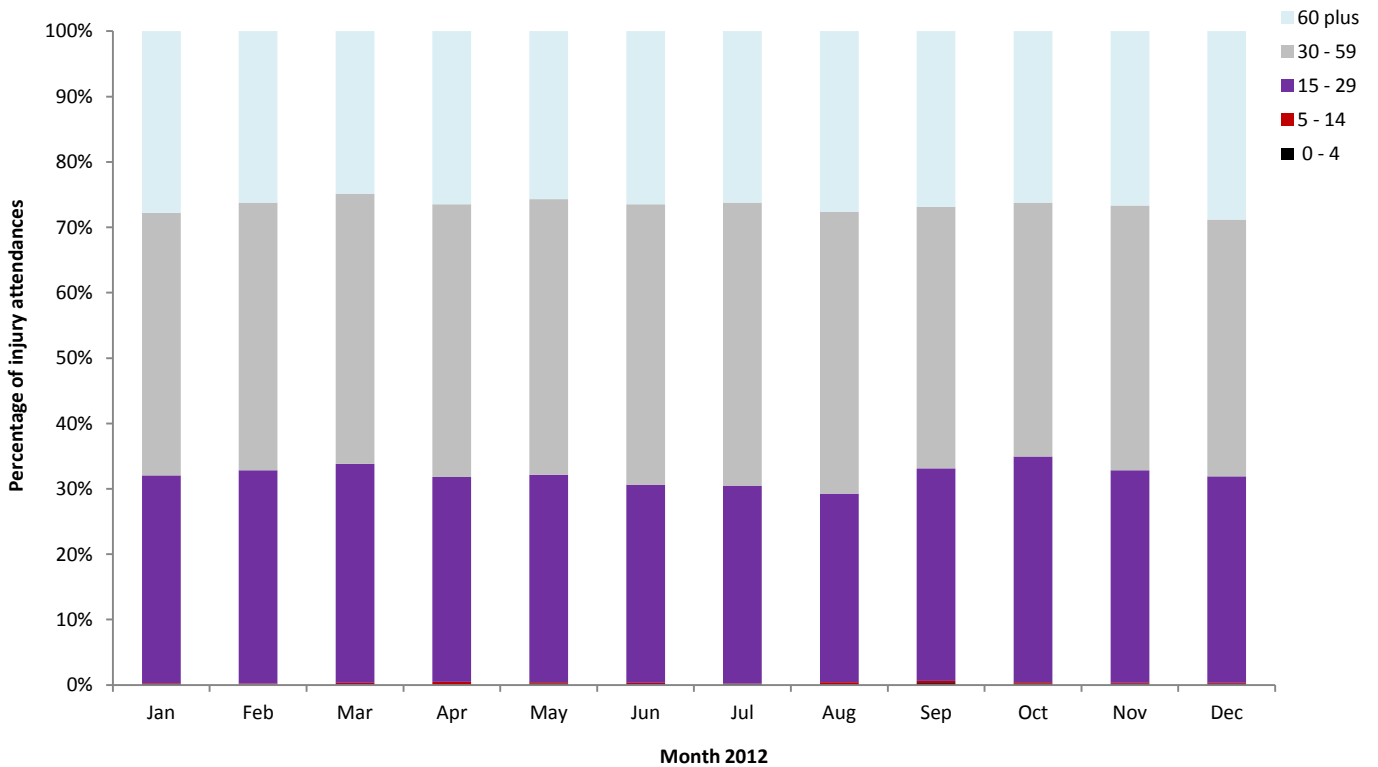
\* Please note that although a patient may complete the assault patient questionnaire data may not be provided for each question as the patient can refuse or be unable to answer particular questions. Data provided in the following analyses represent those patients who completed each question.

<sup>^</sup> Not including unable to answer, refused to answer or unknown

**Figure 1: Gender of injury attendances by month, January to December 2012**



**Figure 2: Age group of injury attendances by month, January to December 2012**



**Table 1: Injury attendances by injury group and month, January to December 2012<sup>123</sup>**

| Injury group | Jan         | Feb         | Mar         | Apr         | May         | Jun         | Jul         | Aug         | Sep         | Oct         | Nov         | Dec         | Total        | %          |
|--------------|-------------|-------------|-------------|-------------|-------------|-------------|-------------|-------------|-------------|-------------|-------------|-------------|--------------|------------|
| Other injury | 1824        | 1907        | 2532        | 1555        | 2024        | 1529        | 1799        | 2141        | 1750        | 1550        | 2013        | 1703        | 22327        | 72         |
| Fall         | 280         | 329         | 302         | 302         | 315         | 302         | 283         | 326         | 261         | 272         | 264         | 349         | 3585         | 11         |
| Assault      | 158         | 140         | 138         | 137         | 147         | 132         | 139         | 145         | 159         | 140         | 149         | 185         | 1769         | 6          |
| Overdose     | 99          | 117         | 110         | 104         | 134         | 136         | 137         | 133         | 123         | 132         | 90          | 104         | 1419         | 5          |
| Sport injury | 101         | 88          | 75          | 63          | 78          | 75          | 61          | 81          | 111         | 138         | 110         | 86          | 1067         | 3          |
| RTC*         | 41          | 63          | 45          | 41          | 39          | 53          | 35          | 32          | 45          | 45          | 47          | 36          | 522          | 2          |
| Burn         | 27          | 14          | 21          | 24          | 31          | 19          | 24          | 18          | 23          | 24          | 17          | 24          | 266          | 1          |
| Self-harm    | 14          | 18          | 14          | 20          | 17          | 21          | 36          | 17          | 22          | 34          | 28          | 15          | 256          | 1          |
| <b>Total</b> | <b>2544</b> | <b>2676</b> | <b>3237</b> | <b>2246</b> | <b>2785</b> | <b>2267</b> | <b>2514</b> | <b>2893</b> | <b>2494</b> | <b>2335</b> | <b>2718</b> | <b>2502</b> | <b>31211</b> | <b>100</b> |

\*Road traffic collision

**Table 2: Injury attendances by location of incident and month, January to December 2012**

| Location         | Jan         | Feb         | Mar         | Apr         | May         | Jun         | Jul         | Aug         | Sep         | Oct         | Nov         | Dec         | Total        | %          |
|------------------|-------------|-------------|-------------|-------------|-------------|-------------|-------------|-------------|-------------|-------------|-------------|-------------|--------------|------------|
| Home             | 1894        | 1931        | 2491        | 1679        | 2152        | 1696        | 1962        | 2224        | 1791        | 1661        | 2027        | 1718        | 23226        | 74         |
| Other            | 279         | 316         | 373         | 258         | 312         | 265         | 238         | 337         | 376         | 361         | 367         | 463         | 3945         | 13         |
| Public place     | 319         | 343         | 302         | 251         | 263         | 256         | 256         | 273         | 273         | 258         | 256         | 276         | 3326         | 11         |
| Work             | 34          | 57          | 43          | 39          | 39          | 39          | 41          | 42          | 36          | 26          | 44          | 32          | 472          | 2          |
| Leisure facility | 18          | 29          | 28          | 19          | 19          | 11          | 17          | 17          | 18          | 29          | 24          | 13          | 242          | 1          |
| <b>Total</b>     | <b>2544</b> | <b>2676</b> | <b>3237</b> | <b>2246</b> | <b>2785</b> | <b>2267</b> | <b>2514</b> | <b>2893</b> | <b>2494</b> | <b>2335</b> | <b>2718</b> | <b>2502</b> | <b>31211</b> | <b>100</b> |

**Table 3: Injury attendances by disposal method and month, January to December 2012<sup>4</sup>**

| Disposal                    | Jan         | Feb         | Mar         | Apr         | May         | Jun         | Jul         | Aug         | Sep         | Oct         | Nov         | Dec         | Total        | %          |
|-----------------------------|-------------|-------------|-------------|-------------|-------------|-------------|-------------|-------------|-------------|-------------|-------------|-------------|--------------|------------|
| Discharged                  | 983         | 1184        | 1591        | 930         | 1301        | 1082        | 1224        | 1387        | 1180        | 1001        | 1304        | 1094        | 14261        | 46         |
| Admitted                    | 778         | 789         | 894         | 695         | 797         | 624         | 667         | 759         | 698         | 619         | 791         | 783         | 8894         | 28         |
| Discharge - follow-up by GP | 242         | 184         | 201         | 172         | 164         | 114         | 130         | 170         | 125         | 147         | 118         | 109         | 1876         | 6          |
| Left - before being treated | 86          | 116         | 148         | 72          | 122         | 103         | 124         | 143         | 116         | 109         | 87          | 60          | 1286         | 4          |
| Referred to other HCP       | 94          | 106         | 101         | 106         | 113         | 100         | 112         | 105         | 99          | 124         | 112         | 94          | 1266         | 4          |
| Referred to fracture clinic | 131         | 97          | 95          | 76          | 93          | 67          | 87          | 93          | 75          | 108         | 99          | 84          | 1105         | 4          |
| Left - refused treatment    | 83          | 84          | 98          | 82          | 79          | 80          | 74          | 124         | 97          | 87          | 66          | 51          | 1005         | 3          |
| Referred to ED clinic       | 55          | 42          | 48          | 35          | 52          | 29          | 35          | 41          | 52          | 45          | 39          | 30          | 503          | 2          |
| Referred to OPD clinic      | 49          | 44          | 30          | 42          | 33          | 36          | 30          | 35          | 34          | 46          | 49          | 28          | 456          | 1          |
| Other                       | 25          | 14          | 15          | 27          | 24          | 25          | 23          | 26          | 11          | 33          | 33          | 148         | 404          | 1          |
| Transfer to other HCP       | 9           | 10          | 9           | ***         | 5           | ***         | ***         | 6           | ***         | 8           | 13          | 14          | 86           | 0          |
| Patient died in department  | <10         | <6          | <8          | 5           | ***         | ***         | 6           | ***         | ***         | <9          | <7          | ***         | <63          | 0          |
| Restored to ward            | ***         | ***         | ***         | ***         | ***         | ***         | ***         | ***         | ***         | ***         | ***         | ***         | <5           | 0          |
| <b>Total</b>                | <b>2544</b> | <b>2676</b> | <b>3237</b> | <b>2246</b> | <b>2785</b> | <b>2267</b> | <b>2514</b> | <b>2893</b> | <b>2494</b> | <b>2335</b> | <b>2718</b> | <b>2502</b> | <b>31211</b> | <b>100</b> |

**Table 4: Assault attendees' alcohol consumption within three hours prior to the assault by month, January to December 2012**

| Alcohol consumption | Jan        | Feb        | Mar        | Apr        | May        | Jun        | Jul        | Aug        | Sep        | Oct        | Nov        | Dec        | Total       | %          |
|---------------------|------------|------------|------------|------------|------------|------------|------------|------------|------------|------------|------------|------------|-------------|------------|
| Unknown             | 128        | 74         | 105        | 92         | 113        | 94         | 119        | 132        | 137        | 119        | 133        | 181        | 1427        | 81         |
| Yes                 | 24         | 39         | 20         | 22         | 17         | 19         | ***        | ***        | 10         | 12         | 7          | ***        | 181         | 10         |
| No                  | ***        | 23         | 12         | 13         | 11         | 11         | 7          | 6          | 8          | 8          | 8          | ***        | 109         | 6          |
| Unable to answer    | ***        | ***        | ***        | <8         | ***        | ***        | 6          | ***        | ***        | ***        | ***        | ***        | 33          | 2          |
| Refused to answer   | ***        | ***        | ***        | ***        | ***        | <7         | ***        | ***        | ***        | ***        | ***        | ***        | 19          | 1          |
| <b>Total</b>        | <b>158</b> | <b>140</b> | <b>138</b> | <b>137</b> | <b>147</b> | <b>132</b> | <b>139</b> | <b>145</b> | <b>159</b> | <b>140</b> | <b>149</b> | <b>185</b> | <b>1769</b> | <b>100</b> |

<sup>1</sup> Please note that, from April 2011, changes have been made in the way data is collected by the ED. It appears that more attendances are being coded with an injury group 'other than above', resulting in these cases being classed as non trauma and therefore not included in these analyses.

<sup>2</sup> Please note that for all tables, all numbers less than five have been suppressed in line with patient confidentiality and if there is only one number less than five in a category then two numbers will be suppressed at the next level (e.g. <6) in order to prevent back calculations from totals.

<sup>3</sup> Please note percentages might not add to one hundred due to rounding.

<sup>4</sup> OPD= out-patient department, HCP= health care provider, GP= General Practitioner.

**Table 5: Assault attendances by location of incident and month, January to December 2012**

| Assault location    | Jan        | Feb        | Mar        | Apr        | May        | Jun        | Jul        | Aug        | Sep        | Oct        | Nov        | Dec        | Total       | %          |
|---------------------|------------|------------|------------|------------|------------|------------|------------|------------|------------|------------|------------|------------|-------------|------------|
| Unknown             | 128        | 74         | 106        | 92         | 113        | 94         | 120        | 132        | 137        | 119        | 134        | 181        | 1430        | 81         |
| Street              | 11         | 37         | 20         | 15         | 13         | 16         | 8          | <8         | 10         | 14         | 9          | ***        | 161         | 9          |
| Bar/pub             | 7          | 14         | ***        | 7          | 5          | 9          | ***        | ***        | ***        | ***        | ***        | ***        | 56          | 3          |
| Your home           | ***        | 6          | 6          | 7          | 8          | 7          | ***        | ***        | ***        | ***        | ***        | ***        | 46          | 3          |
| Club                | ***        | ***        | ***        | ***        | ***        | ***        | ***        | ***        | ***        | ***        | ***        | ***        | 17          | 1          |
| Other               | ***        | ***        | ***        | ***        | ***        | ***        | ***        | ***        | ***        | ***        | ***        | ***        | 17          | 1          |
| Someone else's home | ***        | ***        | ***        | ***        | ***        | ***        | ***        | ***        | ***        | ***        | ***        | ***        | 13          | 1          |
| Refused to answer   | ***        | ***        | ***        | ***        | ***        | ***        | ***        | ***        | ***        | ***        | ***        | ***        | 11          | 1          |
| Workplace           | ***        | ***        | ***        | ***        | ***        | ***        | ***        | ***        | ***        | ***        | ***        | ***        | 10          | 1          |
| Unable to answer    | ***        | ***        | ***        | ***        | ***        | ***        | ***        | ***        | ***        | ***        | ***        | ***        | 8           | 0          |
| <b>Total</b>        | <b>158</b> | <b>140</b> | <b>138</b> | <b>137</b> | <b>147</b> | <b>132</b> | <b>139</b> | <b>145</b> | <b>159</b> | <b>140</b> | <b>149</b> | <b>185</b> | <b>1769</b> | <b>100</b> |

**Table 6: Assault attendances by relationship with attacker and month, January to December 2012**

| Relationship with attacker | Jan        | Feb        | Mar        | Apr        | May        | Jun        | Jul        | Aug        | Sep        | Oct        | Nov        | Dec        | Total       | %          |
|----------------------------|------------|------------|------------|------------|------------|------------|------------|------------|------------|------------|------------|------------|-------------|------------|
| Unknown                    | 129        | 79         | 106        | 96         | 116        | 99         | 123        | 133        | 139        | 122        | 135        | 181        | 1458        | 82         |
| Stranger                   | 20         | 43         | 24         | 24         | 15         | 20         | 6          | <6         | 12         | 14         | 9          | ***        | 196         | 11         |
| Acquaintance/friend        | ***        | 8          | ***        | 6          | 7          | ***        | ***        | ***        | ***        | ***        | ***        | ***        | 34          | 2          |
| Refused to answer          | ***        | ***        | ***        | ***        | ***        | ***        | ***        | ***        | ***        | ***        | ***        | ***        | 18          | 1          |
| Bouncer                    | ***        | ***        | ***        | ***        | ***        | ***        | ***        | ***        | ***        | ***        | ***        | ***        | 16          | 1          |
| Partner                    | ***        | ***        | ***        | ***        | ***        | ***        | ***        | ***        | ***        | ***        | ***        | ***        | 16          | 1          |
| Unable to answer           | ***        | ***        | ***        | ***        | ***        | ***        | ***        | ***        | ***        | ***        | ***        | ***        | 14          | 1          |
| Family member              | ***        | ***        | ***        | ***        | ***        | ***        | ***        | ***        | ***        | ***        | ***        | ***        | 9           | 1          |
| Work mate/colleague        | ***        | ***        | ***        | ***        | ***        | ***        | ***        | ***        | ***        | ***        | ***        | ***        | ***         | 0          |
| Ex-partner                 | ***        | ***        | ***        | ***        | ***        | ***        | ***        | ***        | ***        | ***        | ***        | ***        | ***         | 0          |
| Police                     | ***        | ***        | ***        | ***        | ***        | ***        | ***        | ***        | ***        | ***        | ***        | ***        | ***         | 0          |
| Work client/customer       | ***        | ***        | ***        | ***        | ***        | ***        | ***        | ***        | ***        | ***        | ***        | ***        | ***         | 0          |
| <b>Total</b>               | <b>158</b> | <b>140</b> | <b>138</b> | <b>137</b> | <b>147</b> | <b>132</b> | <b>139</b> | <b>145</b> | <b>159</b> | <b>140</b> | <b>149</b> | <b>185</b> | <b>1769</b> | <b>100</b> |

**Table 7: Assault attendances by method of attack and month, January to December 2012**

| Method of attack      | Jan        | Feb        | Mar        | Apr        | May        | Jun        | Jul        | Aug        | Sep        | Oct        | Nov        | Dec        | Total       | %          |
|-----------------------|------------|------------|------------|------------|------------|------------|------------|------------|------------|------------|------------|------------|-------------|------------|
| Unknown               | 128        | 74         | 106        | 93         | 113        | 96         | 121        | 132        | 137        | 119        | 133        | 181        | 1433        | 81         |
| Body part (e.g. fist) | 22         | 49         | 21         | 27         | 25         | 24         | <9         | 9          | 12         | 13         | 9          | ***        | 220         | 12         |
| Knife                 | ***        | ***        | ***        | 7          | ***        | ***        | ***        | ***        | ***        | ***        | ***        | ***        | 32          | 2          |
| Other                 | ***        | ***        | ***        | ***        | ***        | ***        | ***        | ***        | ***        | ***        | ***        | ***        | 23          | 1          |
| Bottle                | 5          | ***        | ***        | ***        | ***        | ***        | ***        | ***        | ***        | ***        | ***        | ***        | 18          | 1          |
| Blunt object          | ***        | ***        | ***        | ***        | ***        | ***        | ***        | ***        | ***        | ***        | ***        | ***        | 14          | 1          |
| Unable to answer      | ***        | ***        | ***        | ***        | ***        | ***        | ***        | ***        | ***        | ***        | ***        | ***        | 11          | 1          |
| Refused to answer     | ***        | ***        | ***        | ***        | ***        | ***        | ***        | ***        | ***        | ***        | ***        | ***        | 10          | 1          |
| Glass                 | ***        | ***        | ***        | ***        | ***        | ***        | ***        | ***        | ***        | ***        | ***        | ***        | 8           | 0          |
| <b>Total</b>          | <b>158</b> | <b>140</b> | <b>138</b> | <b>137</b> | <b>147</b> | <b>132</b> | <b>139</b> | <b>145</b> | <b>159</b> | <b>140</b> | <b>149</b> | <b>185</b> | <b>1769</b> | <b>100</b> |

Published March 2013

Jennifer Brizell (Merseyside and Cheshire TIIG Research Analyst)

Centre for Public Health, Liverpool John Moores University,

2<sup>nd</sup> Floor, Henry Cotton Building, 15-21 Webster Street, Liverpool, L3 2ET

Tel: 0151 231 4500, Email: [j.s.brizell@ljmu.ac.uk](mailto:j.s.brizell@ljmu.ac.uk)

For enquiries please contact Val Upton: [z.a.quigg@ljmu.ac.uk](mailto:z.a.quigg@ljmu.ac.uk)

Website: [www.tiig.info](http://www.tiig.info) (please note data requests should be made through the website)