

TIIG  
INJURY SURVEILLANCE IN THE NORTH WEST OF ENGLAND

SOUTHPORT AND FORMBY DISTRICT GENERAL HOSPITAL EMERGENCY DEPARTMENT

MONTHLY BULLETIN: OCTOBER 2013 TO SEPTEMBER 2014

This bulletin provides a breakdown of all injury attendances to Southport and Formby District General Hospital Emergency Department (ED) between October 2013 and September 2014.

In the twelve month period there were 9,382 injury attendances to the ED. The month with the highest number of attendances, calculated as a daily average, was July 2014 (31 per day) compared to January 2014, the month with the fewest (23 per day; **Figure 1**).

There were slightly more females than males attending the ED (females=4,760; 51%; **Figure 1**). Under two in five (38%) were aged 60 years and above (n=3,581), followed by 36% aged between 30 and 59 years (n=3,327) and 26% aged between 15 and 29 years (n=2,433; **Figure 2**). Less than 1% of attendees were under the age of 15 years (n=38) which is likely to be due to the close proximity of the Paediatric ED located at Ormskirk and District General Hospital.

**Table 1** shows the injury group of attendances between October 2013 and September 2014. Just over seven in ten (71%) attendances were categorised as 'other' injury (n=6,694). Road traffic collisions accounted for one in ten (10%) attendances (n=932), followed by 8% of injuries sustained by sport (n=787), 6% due to deliberate self-harm (n=547) and 5% due to assault (n=422).

The referral source to the ED is illustrated in **Table 2**. Under three-quarters (72%) self-referred (n=6,741)

while 14% were referred by the emergency services (n=1,274).

Just under half (48%) of injuries occurred at home (n=4,514), followed by 36% which were sustained in a public place (n=3,358; **Table 3**).

**Table 4** illustrates the discharge destination for ED attendances. Exactly half (50%) of attendees were discharged from hospital with no follow-up treatment required (n=4,674). Under one-fifth (18%) were admitted to hospital (n=1,705) while 11% were discharged from hospital with follow-up treatment to be provided by a health care provider (HCP; n=1,011).

#### **Assault attendances**

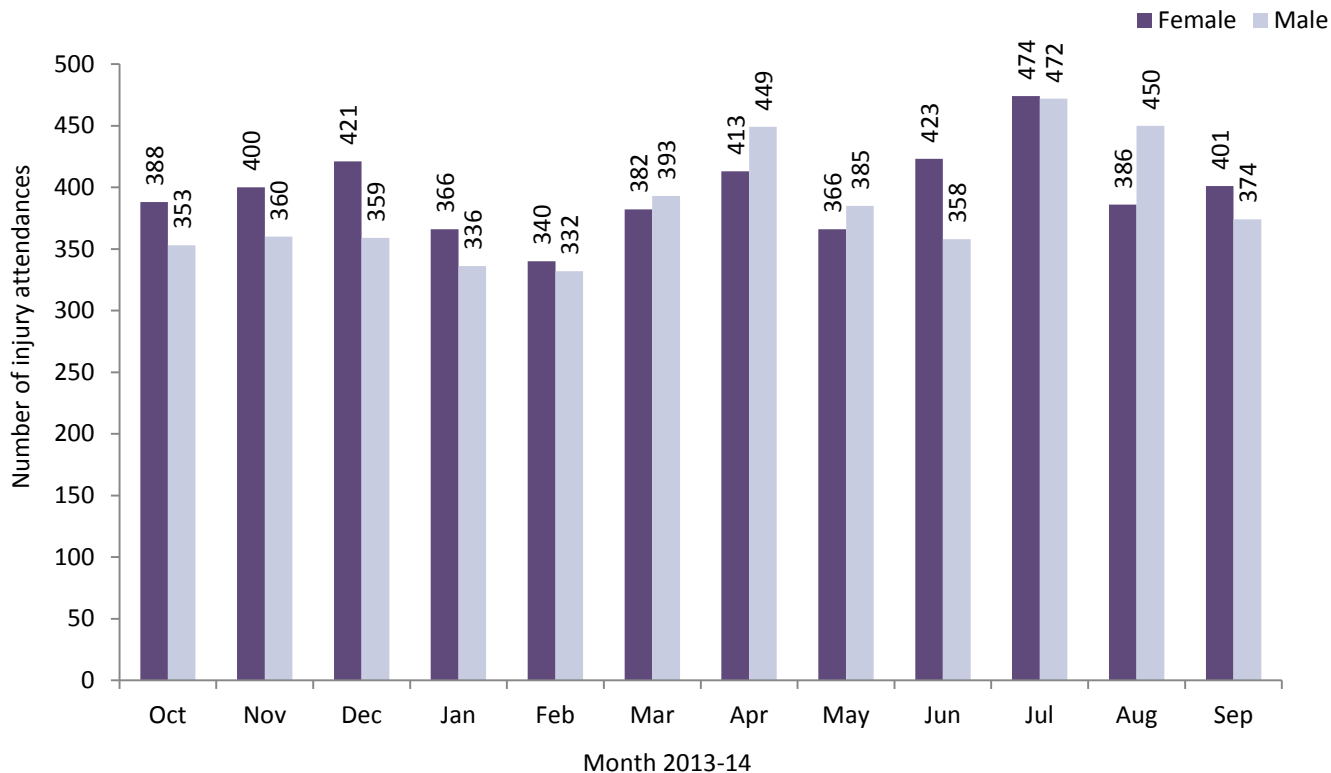
Between October 2013 and September 2014 there were 422 assault attendances to Southport and Formby District General Hospital ED.

Over three-quarters (77%) of assault attendees were male (n=325; **Figure 3**). Just over half (51%) were aged between 15 and 29 years (n=216), followed by 44% aged between 30 and 59 years (n=184; **Table 5**).

The assault location is presented in **Table 6**. Three in five (60%) assaults occurred in a public place (n=254) while just under one in five (19%) occurred in the home (n=79).

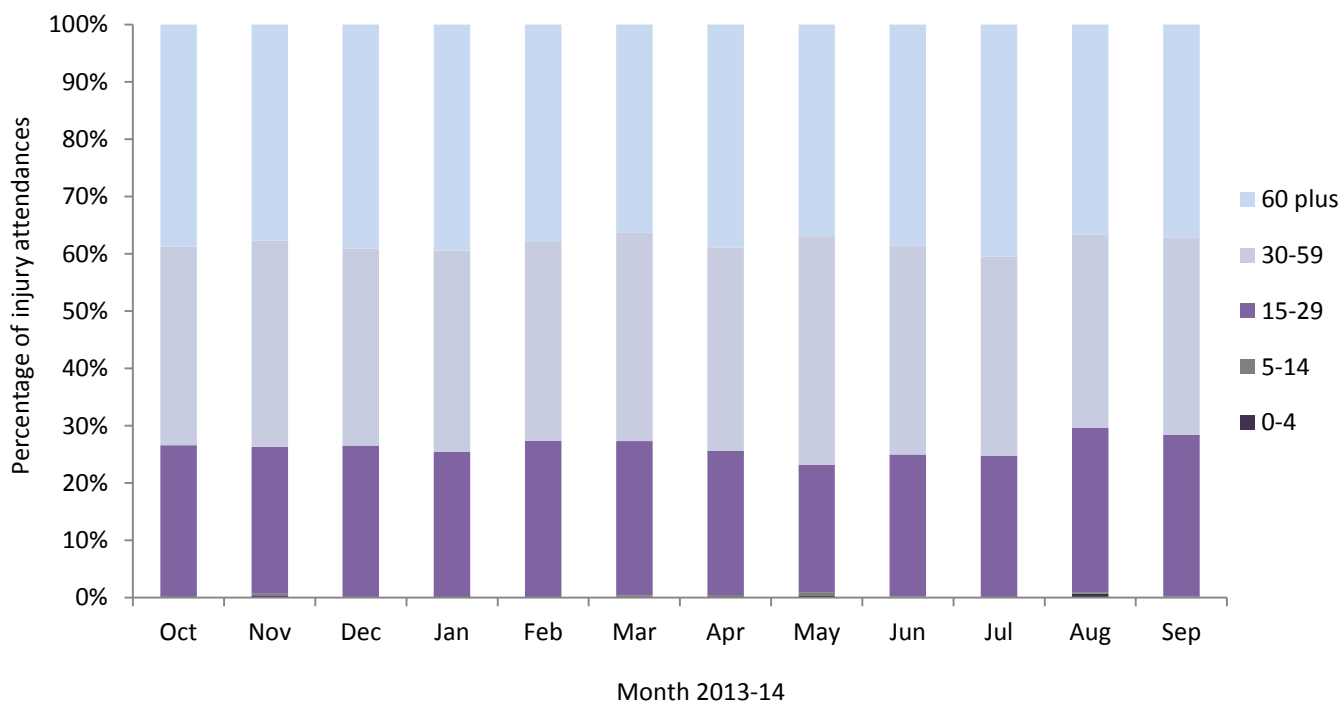
**Table 7** illustrates the disposal method of assault attendances. Over half (53%) were discharged from hospital with no follow-up treatment required (n=223) while 22% required follow-up treatment (n=91) and 10% were admitted to hospital (n=42).

**Figure 1: ED injury attendances by gender and month, October 2013 to September 2014<sup>^</sup>**



<sup>^</sup> There were <5 records where the gender was unknown; these have been omitted from the chart.

**Figure 2: ED injury attendances by age group and month, October 2013 to September 2014<sup>†</sup>**



<sup>†</sup> There were <5 records where the age was unknown; these have been omitted from the chart.

**Table 1: ED injury attendances by injury group and month, October 2013 to September 2014**

Injury group	Oct	Nov	Dec	Jan	Feb	Mar	Apr	May	Jun	Jul	Aug	Sep	Total	%
Other injury	519	540	565	500	475	524	612	545	568	719	603	524	6694	71%
Road traffic collision	61	84	88	81	83	75	72	69	65	82	90	82	932	10%
Sports injury	66	52	47	56	53	86	90	65	70	66	63	73	787	8%
Deliberate self-harm	54	52	52	31	40	49	57	36	36	42	38	60	547	6%
Assault	41	32	28	34	21	41	31	36	42	37	43	36	422	5%
<b>Total</b>	<b>741</b>	<b>760</b>	<b>780</b>	<b>702</b>	<b>672</b>	<b>775</b>	<b>862</b>	<b>751</b>	<b>781</b>	<b>946</b>	<b>837</b>	<b>775</b>	<b>9382</b>	<b>100%</b>

**Table 2: ED injury attendances by referral source and month, October 2013 to September 2014<sup>1</sup>**

Referral source	Oct	Nov	Dec	Jan	Feb	Mar	Apr	May	Jun	Jul	Aug	Sep	Total	%
Self-referral	507	536	529	472	490	570	652	574	570	720	613	508	6741	72%
Emergency services	103	132	117	112	66	95	101	107	104	101	106	130	1274	14%
Other	96	58	90	72	75	68	65	39	57	84	81	89	874	9%
Health care provider: same or other	16	16	17	25	22	20	22	20	26	21	23	22	250	3%
Police	11	10	13	14	8	8	11	***	<15	11	9	6	118	1%
General medical practitioner	6	8	9	5	11	<15	<15	5	10	<10	5	14	103	1%
Work	***	0	5	***	0	***	0	***	***	***	0	<10	17	0%
Educational establishment	***	0	0	***	0	0	***	***	0	0	0	***	5	0%
<b>Total</b>	<b>741</b>	<b>760</b>	<b>780</b>	<b>702</b>	<b>672</b>	<b>775</b>	<b>862</b>	<b>751</b>	<b>781</b>	<b>946</b>	<b>837</b>	<b>775</b>	<b>9382</b>	<b>100%</b>

**Table 3: ED injury attendances by incident location and month, October 2013 to September 2014<sup>1</sup>**

Incident location	Oct	Nov	Dec	Jan	Feb	Mar	Apr	May	Jun	Jul	Aug	Sep	Total	%
Home	359	374	395	355	307	370	406	364	375	466	388	355	4514	48%
Public place	288	287	268	263	266	285	305	259	263	302	291	281	3358	36%
Other	69	67	76	57	63	76	116	88	96	126	120	100	1054	11%
Work	<15	<35	<40	<30	<35	<45	<35	<40	<50	52	38	<40	435	5%
Educational establishment	***	***	***	***	***	***	***	***	***	0	0	***	21	0%
<b>Total</b>	<b>741</b>	<b>760</b>	<b>780</b>	<b>702</b>	<b>672</b>	<b>775</b>	<b>862</b>	<b>751</b>	<b>781</b>	<b>946</b>	<b>837</b>	<b>775</b>	<b>9382</b>	<b>100%</b>

**Table 4: ED injury attendances by discharge destination and month, October 2013 to September 2014<sup>1,2</sup>**

Discharge destination	Oct	Nov	Dec	Jan	Feb	Mar	Apr	May	Jun	Jul	Aug	Sep	Total	%
Discharged - no follow-up	335	357	351	316	316	365	423	405	399	537	455	415	4674	50%
Admitted to hospital	142	149	143	143	109	155	168	125	143	161	127	140	1705	18%
Discharged - follow-up by other HCP	95	105	99	100	93	99	92	70	67	71	74	46	1011	11%
Referred to fracture clinic	67	64	87	62	82	64	88	71	75	72	77	66	875	9%
Left department before being treated	42	18	22	21	25	30	24	23	42	31	49	40	367	4%
Referred to ED clinic	10	16	25	18	7	18	18	16	18	23	13	17	199	2%
Referred to other health care professional	23	24	25	13	10	14	18	13	15	20	13	11	199	2%
Referred to other outpatient clinic	11	10	10	13	10	10	17	11	11	17	13	9	142	2%
Left department having refused treatment	10	<10	10	9	12	11	9	***	<10	***	6	8	95	1%
Transferred to other HCP	6	10	6	7	8	9	5	12	***	8	<10	<10	89	1%
Unknown	0	0	0	0	0	0	0	0	0	***	0	<20	20	0%
Died in department	0	***	***	0	0	0	0	***	0	***	***	0	<10	0%
Other	0	0	***	0	0	0	0	0	0	0	0	0	***	0%
<b>Total</b>	<b>741</b>	<b>760</b>	<b>780</b>	<b>702</b>	<b>672</b>	<b>775</b>	<b>862</b>	<b>751</b>	<b>781</b>	<b>944</b>	<b>837</b>	<b>757</b>	<b>9362</b>	<b>100%</b>

<sup>1</sup> Please note that all numbers less than five have been suppressed (with \*\*\*) in line with patient confidentiality. If there is only one number less than five in a category then two numbers have been suppressed to prevent back calculations from totals.

<sup>2</sup> HCP = Health care provider.

## ASSAULTS

Figure 3: ED assault attendances by gender and month, October 2013 to September 2014<sup>3</sup>

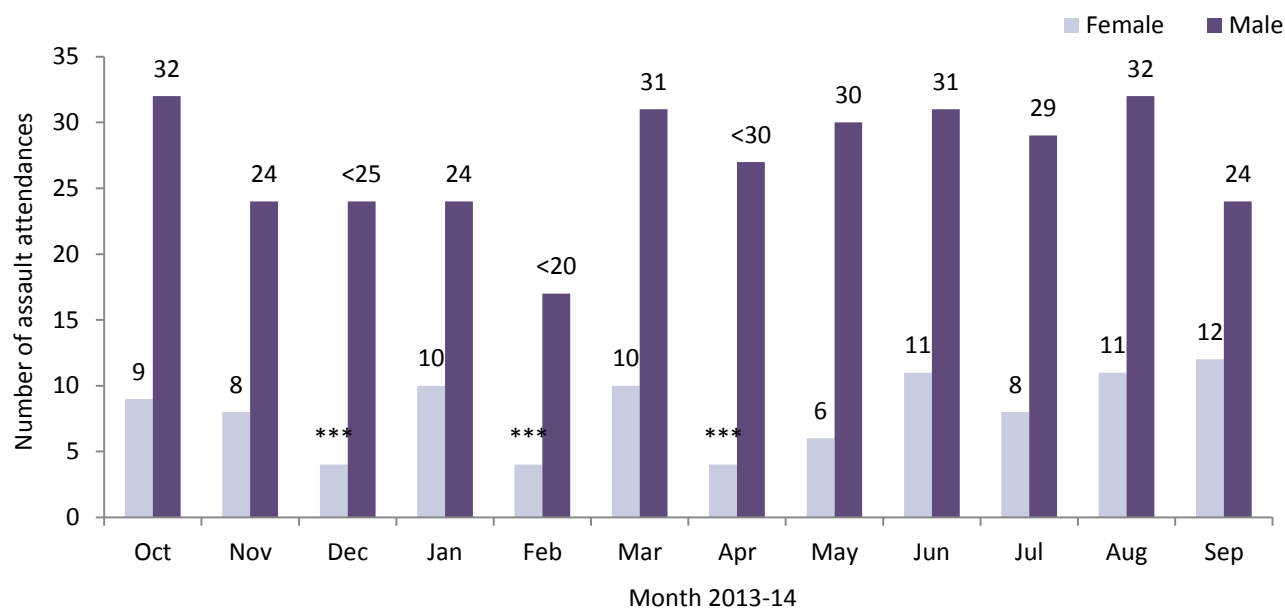


Table 5: ED assault attendances by age group and month, October 2013 to September 2014<sup>5,3</sup>

Age group	Oct	Nov	Dec	Jan	Feb	Mar	Apr	May	Jun	Jul	Aug	Sep	Total	%
15-29	15	19	15	15	15	21	12	20	24	17	28	15	216	51%
30-59	21	<15	13	<20	<10	20	<20	16	<20	<20	<15	<20	184	44%
60+	5	***	0	***	***	0	***	0	***	***	***	***	22	5%
<b>Total</b>	<b>41</b>	<b>32</b>	<b>28</b>	<b>34</b>	<b>21</b>	<b>41</b>	<b>31</b>	<b>36</b>	<b>42</b>	<b>37</b>	<b>43</b>	<b>36</b>	<b>422</b>	<b>100%</b>

<sup>5</sup> There were no assault attendances in the 0-4 and 5-14 years categories.

Table 6: ED assault attendances by incident location and month, October 2013 to September 2014<sup>3</sup>

Incident location	Oct	Nov	Dec	Jan	Feb	Mar	Apr	May	Jun	Jul	Aug	Sep	Total	%
Public place	26	23	17	24	12	28	18	17	26	24	23	16	254	60%
Home	8	***	5	7	***	9	6	8	7	5	<10	9	79	19%
Other	<10	***	***	***	5	***	<10	<10	<10	<10	10	<10	66	16%
Work	***	***	***	***	***	***	***	***	***	***	***	***	<25	5%
Educational establishment	0	***	***	0	0	0	0	0	0	0	0	0	***	1%
<b>Total</b>	<b>41</b>	<b>32</b>	<b>28</b>	<b>34</b>	<b>21</b>	<b>41</b>	<b>31</b>	<b>36</b>	<b>42</b>	<b>37</b>	<b>43</b>	<b>36</b>	<b>422</b>	<b>100%</b>

Table 7: ED assault attendances by disposal method and month, October 2013 to September 2014<sup>3</sup>

Disposal method	Oct	Nov	Dec	Jan	Feb	Mar	Apr	May	Jun	Jul	Aug	Sep	Total	%
Discharged	20	14	14	15	11	22	18	20	25	18	23	23	223	53%
Follow-up	11	10	7	9	***	5	6	10	***	11	13	***	91	22%
Other	<10	***	***	<10	5	7	***	***	8	<10	7	7	66	16%
Admitted	***	<10	***	***	***	7	<10	***	<10	***	0	***	42	10%
<b>Total</b>	<b>41</b>	<b>32</b>	<b>28</b>	<b>34</b>	<b>21</b>	<b>41</b>	<b>31</b>	<b>36</b>	<b>42</b>	<b>37</b>	<b>43</b>	<b>36</b>	<b>422</b>	<b>100%</b>

Published January 2015

Trauma and Injury Intelligence Group

Centre for Public Health, Faculty of Education, Health and Community, Liverpool John Moores University,  
2nd Floor, Henry Cotton Building, Liverpool L3 2ET

T: 0151 231 4498 | E: [tiig@ljmu.ac.uk](mailto:tiig@ljmu.ac.uk) | W: [www.tiig.info](http://www.tiig.info) and [www.cph.org.uk](http://www.cph.org.uk) | Twitter: [www.twitter.com/tiig\\_cph](https://twitter.com/tiig_cph)

<sup>3</sup> Please note that all numbers less than five have been suppressed (with \*\*\*) in line with patient confidentiality. If there is only one number less than five in a category then two numbers have been suppressed to prevent back calculations from totals.