



This bulletin provides a breakdown of all trauma<sup>1</sup> attendances at Southport Accident and Emergency department (AED) between September 2008 and August 2009.

Figure 1 illustrates the number of trauma attendances by month of attendance. Trauma attendance peaked in September (n=1,610), with February (n=1,122) having the least number of trauma attendances.

**Figure 1: Total number of trauma attendances by month, September 2008 to August 2009**

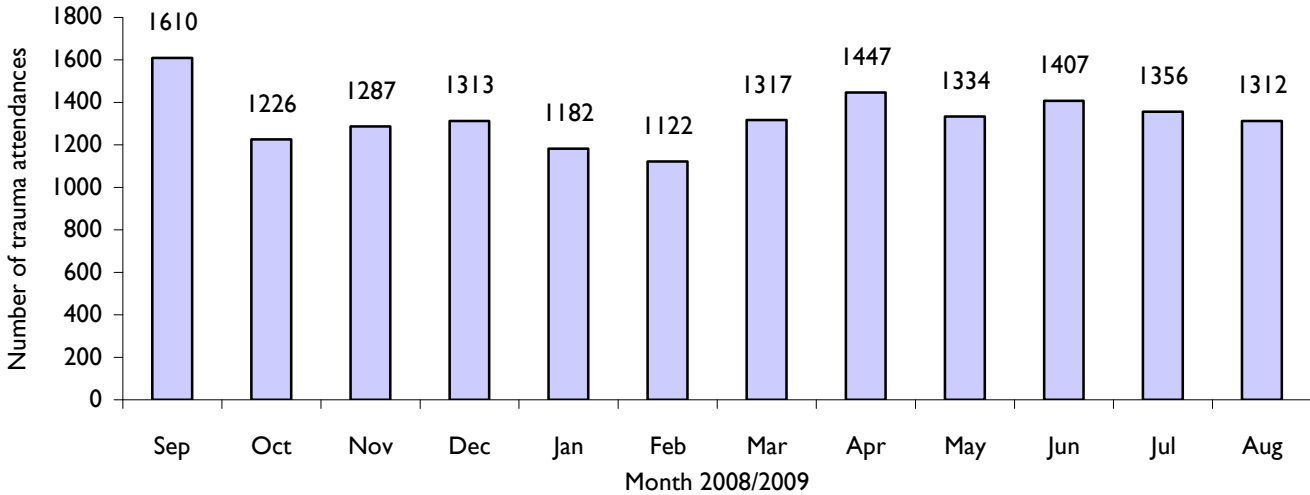


Figure 2 illustrates trauma attendances by gender. For all months there were more male trauma attendances than female presenting at Southport AED.

**Figure 2: Gender of trauma attendances by month, September 2008 to August 2009**

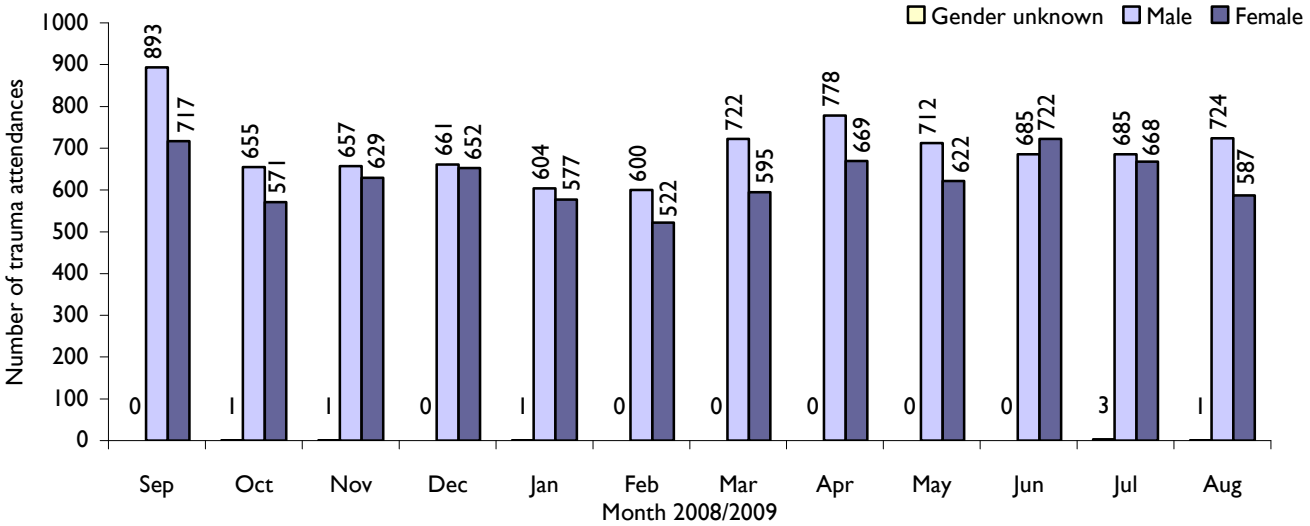


Figure 3 presents the age group of trauma attendances. Across the whole year the vast majority of trauma attendances were made by individuals above the age of 14 years. The low number of trauma attendances under the age of 15 years presenting at Southport AED is probably due to the close proximity of the local Paediatric AED located at Ormskirk General Hospital.

**Figure 3: Age group of trauma attendances by month, September 2008 to August 2009**

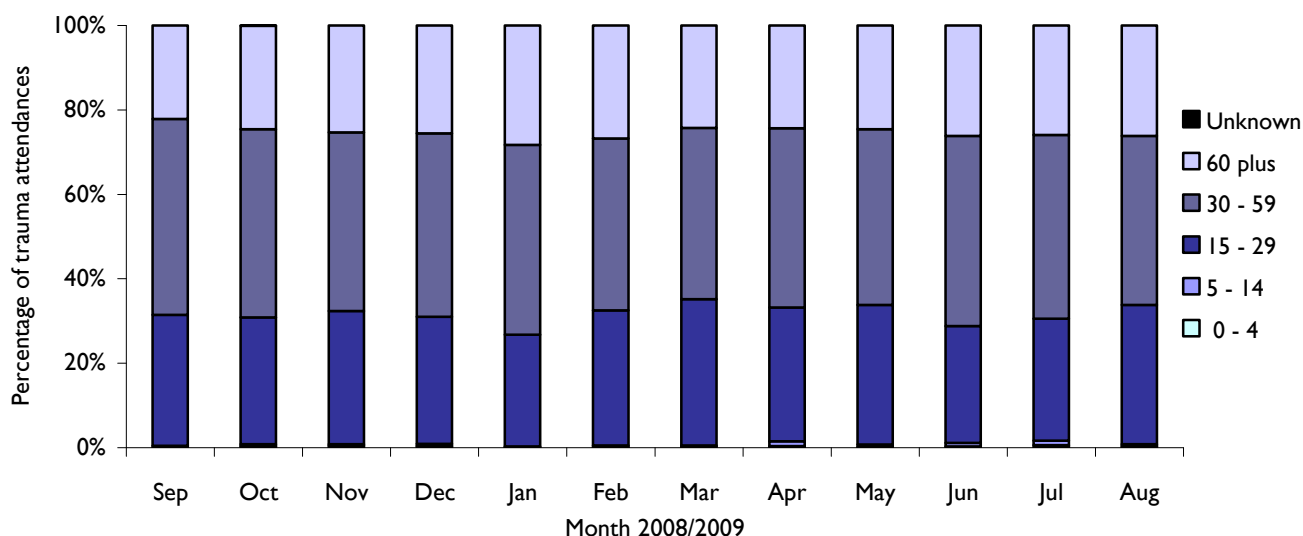


Table 1 details the injury group of trauma attendances. The most common cause of injury was by other accident, (68%). Of those attendances where an injury group was specified 38% were road traffic accidents and 24% sports injuries.

**Table 1: Trauma attendances by injury group, September 2008 to August 2009<sup>iiii</sup>**

Injury group	Sep	Oct	Nov	Dec	Jan	Feb	Mar	Apr	May	Jun	Jul	Aug	Total	%
Other accident	1174	833	876	936	815	721	860	983	832	983	954	904	10871	68
Road traffic accident	169	164	163	174	147	137	165	162	179	169	165	143	1937	12
Sports injury	93	77	91	51	62	119	118	152	130	106	102	99	1200	8
Assault	93	86	84	93	75	82	98	93	118	91	81	96	1090	7
Deliberate self-harm	81	64	70	59	83	63	76	57	75	58	54	70	810	5
Firework injury	<5	<5	<5	<5	<5	<5	<5	<5	<5	<5	<5	<5	6	0
<b>Total</b>	<b>1610</b>	<b>1227</b>	<b>1287</b>	<b>1313</b>	<b>1182</b>	<b>1122</b>	<b>1317</b>	<b>1447</b>	<b>1334</b>	<b>1407</b>	<b>1356</b>	<b>1312</b>	<b>15914</b>	<b>100</b>

Table 2 illustrates the source of referral for patients presenting with trauma injuries. The majority (78%) of trauma attendees self-referred.

**Table 2: Trauma attendances by source of referral, September 2008 to August 2009**

Source of referral	Sep	Oct	Nov	Dec	Jan	Feb	Mar	Apr	May	Jun	Jul	Aug	Total	%
Self-referral	1288	968	1027	1043	910	867	1020	1147	1073	1082	1045	989	12459	78
Emergency services	132	151	140	115	122	105	135	162	120	125	141	139	1587	10
Other	50	10	15	39	47	49	48	41	75	117	78	102	671	4
Health care provider: same or other	100	53	60	57	46	55	54	53	38	52	49	35	652	4
Police	24	27	17	17	21	10	19	11	14	18	20	29	227	1
GP	8	12	15	15	11	13	12	8	10	11	19	13	147	1
Unknown	<5	5	8	23	17	20	21	23	<5	<5	<5	<5	120	1
Work	5	<5	<5	<5	7	<5	<5	<5	<5	<5	<5	<5	38	0
Educational establishment	<5	<5	<5	<5	<5	<5	<5	<5	<5	<5	<5	<5	8	0
Local authority social services	<5	<5	<5	<5	<5	<5	<5	<5	<5	<5	<5	<5	5	0
<b>Total</b>	<b>1610</b>	<b>1227</b>	<b>1287</b>	<b>1313</b>	<b>1182</b>	<b>1122</b>	<b>1317</b>	<b>1447</b>	<b>1334</b>	<b>1407</b>	<b>1356</b>	<b>1312</b>	<b>15914</b>	<b>100</b>

Table 3 presents trauma attendances by location of incident. Just under half (47%) of all trauma attendances occurred in the home.

**Table 3: Trauma attendances by location of incident, September 2008 to August 2009**

Location	Sep	Oct	Nov	Dec	Jan	Feb	Mar	Apr	May	Jun	Jul	Aug	Total	%
Home	766	568	592	599	584	527	637	665	593	706	646	624	7507	47
Public place	558	429	454	512	400	426	492	562	573	504	523	516	5949	37
Other	146	130	138	108	98	95	96	117	104	97	99	105	1333	8
Work	135	95	99	91	98	67	86	98	62	98	84	67	1080	7
Educational establishment	5	5	<5	<5	<5	7	6	5	<5	<5	<5	<5	45	0
<b>Total</b>	<b>1610</b>	<b>1227</b>	<b>1287</b>	<b>1313</b>	<b>1182</b>	<b>1122</b>	<b>1317</b>	<b>1447</b>	<b>1334</b>	<b>1407</b>	<b>1356</b>	<b>1312</b>	<b>15914</b>	<b>100</b>

Table 4 shows the disposal method of trauma attendances. Around four in ten (41%) attendees were discharged requiring no follow up.

**Table 4: Disposal method of all trauma attendances, September 2008 to August 2009**

Disposal	Sep	Oct	Nov	Dec	Jan	Feb	Mar	Apr	May	Jun	Jul	Aug	Total	%
Discharged - did not require any follow up treatment	592	429	446	534	461	489	504	655	627	653	626	582	6598	41
Discharged - follow up treatment to be provided by	356	261	310	259	241	177	292	230	208	225	197	208	2964	19
Admitted to hospital bed	257	183	201	227	220	206	225	217	216	274	226	248	2700	17
Referred to fracture clinic	137	120	112	118	94	95	112	155	119	119	125	79	1385	9
Referred to other health care professional	95	76	81	52	58	56	51	57	58	48	62	56	750	5
Left department before being treated	84	60	59	69	50	49	71	52	39	38	62	74	707	4
Transferred to other health care provider	18	25	22	16	14	14	17	36	22	21	24	28	257	2
Referred to other out-patient Clinic	22	23	28	20	14	20	19	25	18	15	13	22	239	2
Referred to A&E clinic	31	30	16	7	17	5	12	10	6	6	8	6	154	1
Left department having refused treatment	16	18	10	11	12	11	14	10	21	7	12	8	150	1
Died in department	<5	<5	<5	<5	<5	<5	<5	<5	<5	<5	<5	<5	10	0
Unknown	<5	<5	<5	<5	<5	<5	<5	<5	<5	<5	<5	<5	<5	0
Other	<5	<5	<5	<5	<5	<5	<5	<5	<5	<5	<5	<5	<5	0
<b>Total</b>	<b>1610</b>	<b>1227</b>	<b>1287</b>	<b>1313</b>	<b>1182</b>	<b>1122</b>	<b>1317</b>	<b>1447</b>	<b>1334</b>	<b>1407</b>	<b>1356</b>	<b>1312</b>	<b>15914</b>	<b>100</b>

Assault attendees presenting at the Southport AED between September 2008 and August 2009 were mainly male (74%) and the majority (59%) were aged between 15 and 29 years of age. As table 5 shows the primary location of assault was in the public place (63%).

**Table 5: Location of assault for assault attendances, September 2008 to August 2009**

Assault location	Sep	Oct	Nov	Dec	Jan	Feb	Mar	Apr	May	Jun	Jul	Aug	Total	%
Public place	60	51	54	60	38	61	66	65	72	46	40	69	682	63
Home	20	20	16	22	28	13	17	13	36	29	23	21	258	24
Other	9	11	8	8	7	<5	7	8	<5	9	9	<5	87	8
Work	<5	<5	6	<5	<5	<5	7	6	6	6	8	<5	57	5
Educational establishment	<5	<5	<5	<5	<5	<5	<5	<5	<5	<5	<5	<5	6	1
<b>Total</b>	<b>93</b>	<b>86</b>	<b>84</b>	<b>93</b>	<b>75</b>	<b>82</b>	<b>98</b>	<b>93</b>	<b>118</b>	<b>91</b>	<b>81</b>	<b>96</b>	<b>1090</b>	<b>100</b>

Published September 2009

Dan Hungerford (TIIG Analyst)

Centre for Public Health, Faculty of Health and Applied Social Sciences, Liverpool John Moores University  
5<sup>th</sup> Floor, Kingsway House, Liverpool, L3 2AJ

Tel: 0151 231 8724 Email: [d.j.hungerford@ljmu.ac.uk](mailto:d.j.hungerford@ljmu.ac.uk)

Website: [www.tiig.info](http://www.tiig.info) (please note all data requests should be made through the TIIG website)

<sup>i</sup>Trauma refers to all A&E attendances presenting as a result of an intentional or unintentional injury.

<sup>ii</sup> Please note that all numbers less than five have been suppressed in line with patient confidentiality and if there is only one number <5 in a category then two numbers will be suppressed at the next level (e.g. <6) in order to prevent back calculations from totals.

<sup>iii</sup> There were no firework injuries during this period