

Southport and Formby District General Hospital Emergency Department Monthly Bulletin: January to December 2010

This bulletin provides a breakdown of all injury attendances at Southport and Formby District General Hospital Emergency Department (ED) between January and December 2010.

Between January and December 2010 there were 15,337 ED attendances. Injury attendances peaked in January (n=1,450), with November (n=1,109) having the least number of injury attendances (**Figure 1**).

For all months there were more male (51%) injury attendances than female presenting at Southport and Formby District General Hospital ED.

Figure 2 presents the age group of injury attendances. Across the whole year the vast majority of injury attendances were made by individuals above the age of 14 years. The low number of injury attendances under the age of 15 years presenting at Southport and Formby District General Hospital ED is probably due to the close proximity of the local Paediatric ED located at Ormskirk General Hospital.

Table 1 details the injury group of injury attendances. The majority of injury attendances

were classified as 'other injury' (72%). Over one in ten (11%) were recorded as road traffic collisions (RTCs) and 7% sports injury.

Table 2 illustrates the source of referral for patients presenting with injuries. The majority (73%) of injury attendees self-referred.

Table 3 presents injury attendances by location of incident. Just under half (48%) of all injury locations were recorded as in the home. There were 38 injuries in an educational establishment but due to low monthly numbers these have been categorised under other.

Table 4 shows the discharge destination of injury attendances. Over four in ten (42%) attendees were discharged requiring no follow up.

Assault attendees presenting at Southport and Formby District General Hospital ED between January and December 2010 were mainly male (73%) and the majority (58%) were aged between 15 and 29 years of age. As **Table 5** shows the primary location of assault was in a public place (63%).

Figure 1: Gender of injury attendances by month, January to December 2010

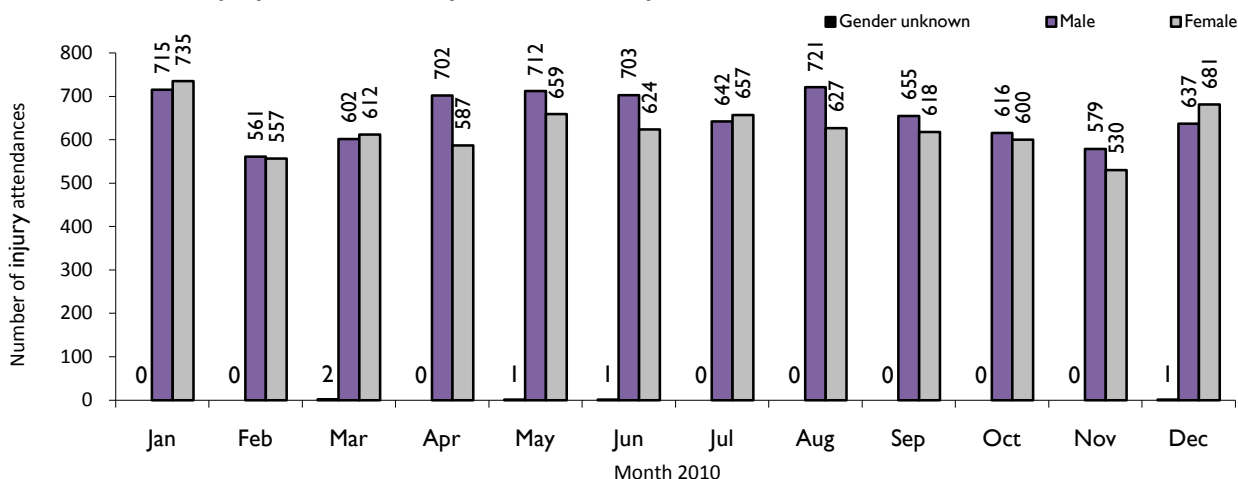


Figure 2: Age group of injury attendances by month, January to December 2010

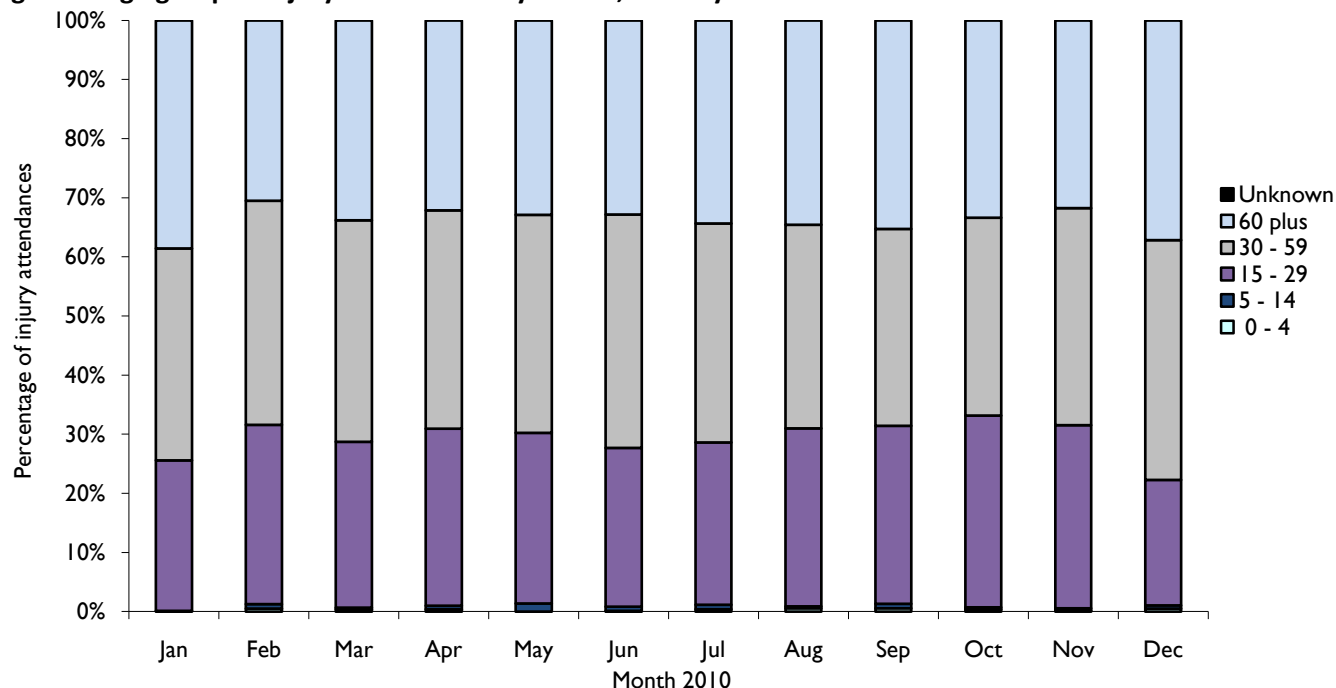


Table 1: Injury attendances by injury group, January to December 2010¹²

Injury group	Jan	Feb	Mar	Apr	May	Jun	Jul	Aug	Sep	Oct	Nov	Dec	Total	%
Other accident	1133	775	812	922	968	927	960	1030	916	838	735	1035	11051	72
Road traffic accident	131	144	166	138	137	147	135	100	115	126	146	137	1622	11
Sports injury	52	71	116	123	121	103	85	115	114	108	96	25	1129	7
Assault	80	71	64	59	80	85	60	59	78	80	73	64	853	6
Deliberate self-harm	54	57	58	47	66	66	59	44	50	64	59	58	682	4
Total	1450	1118	1216	1289	1372	1328	1299	1348	1273	1216	1109	1319	15337	100

Table 2: Injury attendances by source of referral, January to December 2010

Source of referral	Jan	Feb	Mar	Apr	May	Jun	Jul	Aug	Sep	Oct	Nov	Dec	Total	%
Self referral	1098	866	869	935	994	977	930	984	895	872	789	964	11173	73
Emergency services	162	103	135	132	123	129	119	119	150	128	143	179	1622	11
Other	116	93	131	117	143	117	151	140	154	137	87	85	1471	10
Health care provider: same or other	42	27	41	42	61	56	51	39	23	32	35	32	481	3
Police	15	14	22	30	29	24	15	24	27	21	19	20	260	2
General medical practitioner	12	11	5	21	11	13	9	19	12	13	15	20	161	1
Unknown	***	***	***	6	7	7	15	13	***	***	12	13	81	1
Educational establishment	***	***	5	***	***	***	***	7	5	7	6	***	49	0
Work	***	***	6	***	***	***	6	***	***	***	***	***	36	0
Local authority social services	***	***	***	***	***	***	***	***	***				***	0
Total	1450	1118	1216	1289	1372	1328	1299	1348	1273	1216	1109	1319	15337	100

Table 3: Injury attendances by location of incident, January to December 2010³

Location	Jan	Feb	Mar	Apr	May	Jun	Jul	Aug	Sep	Oct	Nov	Dec	Total	%
Home	654	548	579	604	697	652	675	639	631	617	507	565	7368	48
Other	73	54	81	101	118	78	109	109	90	70	106	79	1030	7
Public place	682	456	483	528	494	523	441	530	477	458	427	618	6117	40
Work	41	60	73	56	63	75	74	70	75	71	69	57	784	5
Total	1450	1118	1216	1289	1372	1328	1299	1348	1273	1216	1109	1319	15337	100

¹ *** Please note that all numbers less than five have been suppressed in line with patient confidentiality and if there is only one number in a category then two numbers will be suppressed at the next level (e.g. <6) in order to prevent back calculations from totals.

² Due to low numbers 'Firework injury' has been included in 'Other accident'.

³ Due to low numbers 'Educational establishment' has been included in 'Other'.

Table 4: Discharge destination of all injury attendances, January to December 2010

Disposal	Jan	Feb	Mar	Apr	May	Jun	Jul	Aug	Sep	Oct	Nov	Dec	Total	%
Discharged - did not require any follow up treatment	529	455	482	591	553	572	557	622	560	480	461	522	6384	42
Admitted	326	188	269	223	267	250	257	248	255	285	207	282	3057	20
Discharged - follow up treatment to be provided by other healthcare provider	272	237	231	193	234	197	228	167	190	221	201	189	2560	17
Referred to fracture clinic	155	91	89	113	125	109	97	118	86	76	105	167	1331	9
Left department before being treated	57	42	54	56	67	85	40	73	60	53	51	59	697	5
Referred to other health care professional	61	45	36	52	66	55	56	57	53	42	34	37	594	4
Transferred to other health care provider	11	17	15	23	25	18	29	23	31	9	14	15	230	1
Referred to other out-patient clinic	17	19	18	13	14	21	16	20	16	22	14	17	207	1
Left department having refused treatment	12	17	11	15	11	11	13	14	13	11	10	11	149	1
Referred to ED clinic	10	7	10	8	10	9	5	6	6	14	12	17	114	1
Died in department	***	***	***	***	***	***	***	***	***	***	***	***	12	0
Unknown	***	***	***	***	***	***	***	***	***	***	***	***	***	0
Other	***	***	***	***	***	***	***	***	***	***	***	***	***	0
Total	1450	1118	1216	1289	1372	1328	1299	1348	1273	1216	1109	1319	15337	100

Table 5: Location of assault for assault attendances, January to December 2010⁴

Location	Jan	Feb	Mar	Apr	May	Jun	Jul	Aug	Sep	Oct	Nov	Dec	Total	%
Public place	52	49	40	39	50	50	35	45	49	51	38	37	535	63
Home	16	17	15	7	13	23	16	5	15	12	15	15	169	20
Other	9	***	8	12	16	9	7	7	10	11	18	9	116	13
Work	***	5	***	***	***	***	***	***	***	6	***	***	33	4
Total	80	71	64	59	80	85	60	59	78	80	73	64	853	100

Published February 2011
 Jennifer Brizell (Merseyside and Cheshire TIIG Officer)
 Centre for Public Health, Faculty of Health and Applied Social Sciences, Liverpool John Moores University
 3rd Floor, Henry Cotton Campus, Liverpool, L3 2ET
 Tel: 0151 231 4500 Email: j.s.brizell@ljmu.ac.uk
 Website: www.tiig.info (please note all data requests should be made through the TIIG website)

⁴ Due to low numbers 'Educational establishment' has been included in 'Other'.