

Southport and Formby District General Hospital Emergency Department Monthly Bulletin: January to December 2011

This bulletin provides a breakdown of all injury attendances at Southport and Formby District General Hospital Emergency Department (ED) between January and December 2011.

Between January and December 2011 there were 12,680 ED attendances. Injury attendances peaked in July (n=1,184), with February (n=917) having the least number of injury attendances (**Figure 1**).

During the 12 month period there were slightly more male (n=6,378) injury attendances than female (n=6,297) presenting at Southport and Formby District General Hospital ED.

Figure 2 presents the age group of injury attendances. Over a third of injury attendees were aged 30 to 59 (36%) and over 60 years old (36%). The low number of injury attendees under the age of 15 years presenting at Southport and Formby District General Hospital ED is probably due to the close proximity of the local Paediatric ED located at Ormskirk General Hospital.

Table 1 details the injury group of injury attendances. The majority of injury attendances

were classified as other injury (69%). Over one in ten (11%) were recorded as road traffic collisions (RTC) and 9% were recorded as sports injury.

Table 2 illustrates the source of referral for patients presenting with injuries. The majority (72%) of injury attendees self-referred.

Table 3 presents injury attendances by location of incident. Just under half (47%) of all injury locations were recorded as in the home. Four in ten (40%) injuries were recorded to have occurred in a public place.

Table 4 shows the discharge destination of injury attendances. Just over four in ten (41%) attendees were discharged requiring no follow-up.

Assault attendees presenting at Southport and Formby District General Hospital ED between January and December 2011 were mainly male (62%) and the majority (61%) were aged between 15 and 29 years of age. As **Table 5** shows the primary location of assault was in a public place (65%).

Figure 1: Gender of injury attendances by month, January to December 2011

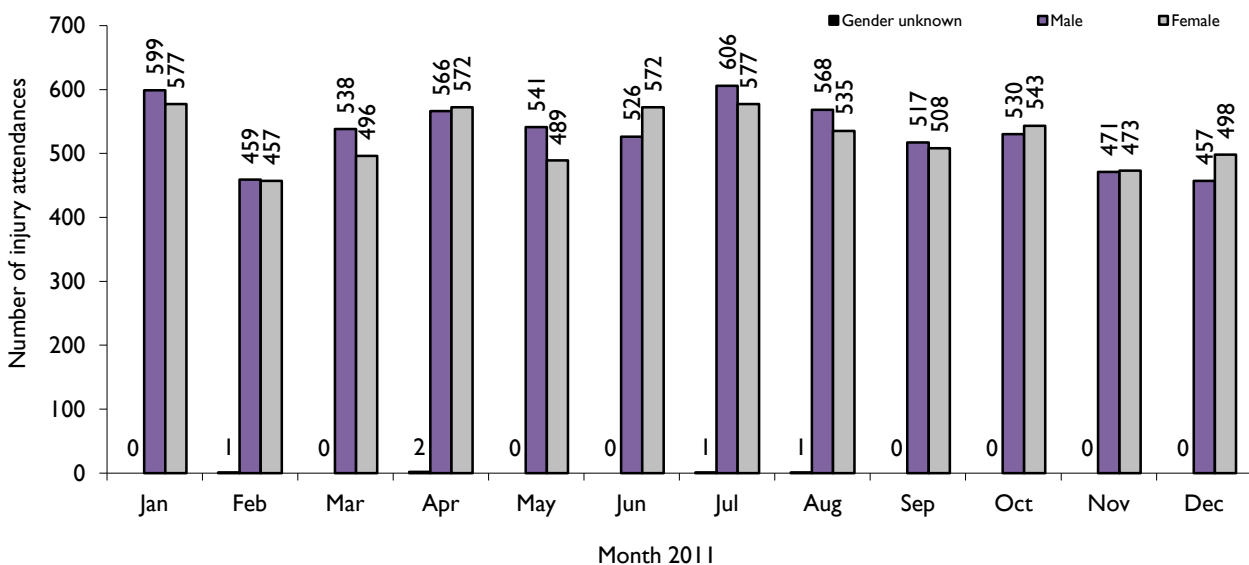


Figure 2: Age group of injury attendances by month, January to December 2011

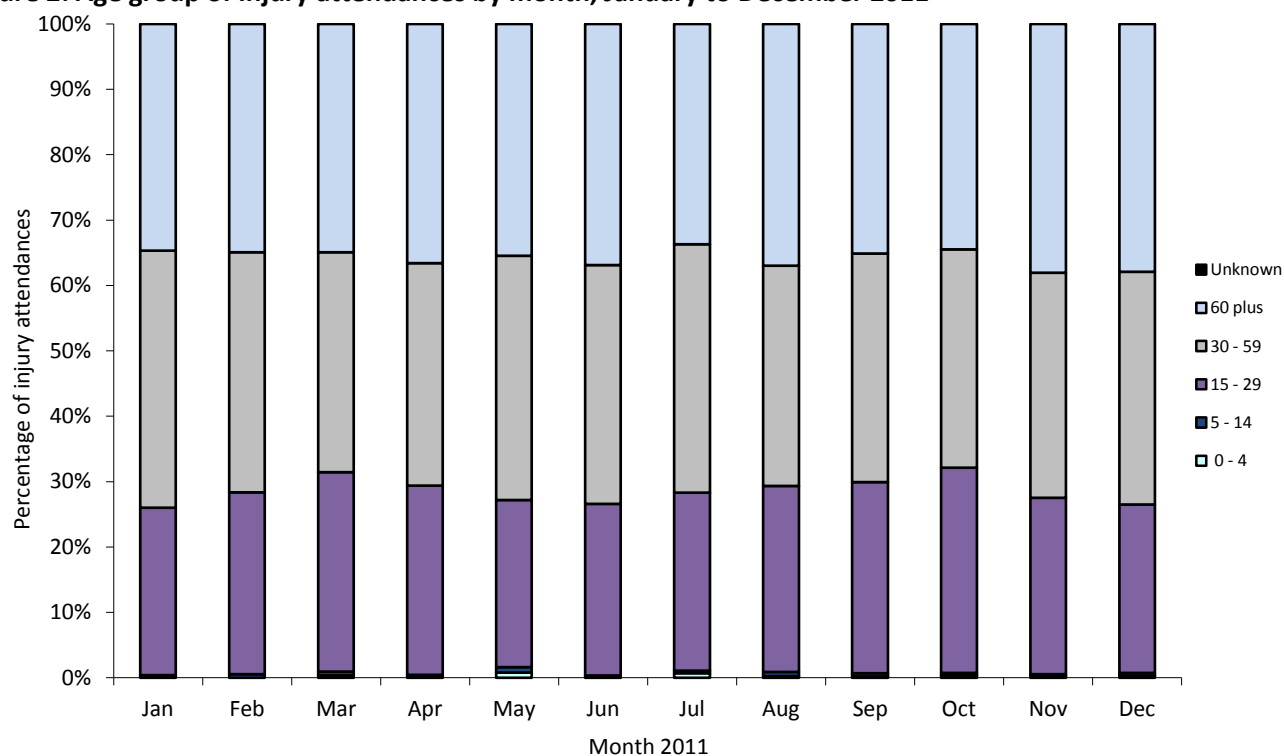


Table 1: Injury attendances by injury group, January to December 2011¹

Injury group	Jan	Feb	Mar	Apr	May	Jun	Jul	Aug	Sep	Oct	Nov	Dec	Total	%
Other injury	843	641	652	780	688	771	845	779	669	709	643	682	8702	69
RTC	112	93	123	118	130	121	108	117	106	127	100	97	1352	11
Sports injury	82	92	145	118	97	88	101	101	129	110	83	50	1196	9
Assault	72	48	49	65	68	67	67	56	51	60	66	76	745	6
Deliberate self-harm	67	43	65	59	47	51	63	51	70	67	52	50	685	5
Total	1176	917	1034	1140	1030	1098	1184	1104	1025	1073	944	955	12680	100

Table 2: Injury attendances by source of referral, January to December 2011²

Source of referral	Jan	Feb	Mar	Apr	May	Jun	Jul	Aug	Sep	Oct	Nov	Dec	Total	%
Self referral	821	659	744	841	749	805	866	833	752	791	644	640	9145	72
Emergency services	160	139	139	159	133	140	140	117	128	126	151	164	1696	13
Other	95	57	71	71	79	74	105	81	78	86	82	88	967	8
Health care provider: same or other	36	18	27	20	22	27	27	34	26	20	24	23	304	2
Police	37	21	23	18	20	28	22	16	17	24	17	19	262	2
General medical practitioner	9	8	16	13	11	15	12	10	13	12	11	10	140	1
Unknown	14	13	12	13	11	***	9	11	8	<9	11	9	123	1
Work	***	***	***	***	***	***	***	***	***	<7	***	***	32	0
Educational establishment	***	***	***	***	***	***	***	***	***	***	***	***	11	0
Total	1176	917	1034	1140	1030	1098	1184	1104	1025	1073	944	955	12680	100

¹ Please note that, due to low numbers, firework injury has been included in other injury.

² Please note that in all tables all numbers less than five have been suppressed in line with patient confidentiality and if there is only one number in a category then two numbers will be suppressed at the next level (e.g. <6) in order to prevent back calculations from totals.

Table 3: Injury attendances by location of incident, January to December 2011

Location	Jan	Feb	Mar	Apr	May	Jun	Jul	Aug	Sep	Oct	Nov	Dec	Total	%
Home	516	424	480	525	504	534	562	504	493	494	477	485	5998	47
Public place	507	349	430	459	406	435	479	429	398	430	327	364	5013	40
Other	96	87	68	99	67	78	87	116	80	87	85	62	1012	8
Work	<57	<55	49	<57	<52	<52	<56	<56	<54	57	48	<43	627	5
Educational establishment	***	***	7	***	***	***	***	***	***	5	7	***	30	0
Total	1176	917	1034	1140	1030	1098	1184	1104	1025	1073	944	955	12680	100

Table 4: Discharge destination of all injury attendances, January to December 2011

Discharge destination	Jan	Feb	Mar	Apr	May	Jun	Jul	Aug	Sep	Oct	Nov	Dec	Total	%
Discharged - did not require any follow-up treatment	375	318	369	461	420	432	500	459	480	544	416	476	5250	41
Admitted	249	197	201	203	203	181	211	186	177	185	192	150	2335	18
Discharged – follow-up treatment to be provided by other healthcare provider	272	185	239	237	174	258	212	171	168	121	130	134	2301	18
Referred to fracture clinic	149	90	88	106	96	98	111	112	67	97	86	85	1185	9
Left department before being treated	51	58	57	50	50	42	57	78	50	41	39	53	626	5
Referred to other health care professional	40	35	23	30	36	50	37	44	38	35	27	20	415	3
Transferred to other health care provider	18	16	20	20	31	16	23	18	16	20	17	13	228	2
Referred to other out-patient clinic	12	6	16	13	10	10	15	18	11	19	18	12	160	1
Referred to ED clinic	5	10	11	10	***	8	11	6	5	***	7	6	86	1
Left department having refused treatment	5	***	9	6	6	***	7	12	10	8	8	***	79	1
Other	***	***	***	***	***	***	***	***	***	***	***	***	9	0
Died in department	***	***	***	***	***	***	***	***	***	***	***	***	6	0
Total	1176	917	1034	1140	1030	1098	1184	1104	1025	1073	944	955	12680	100

Table 5: Location of assault for assault attendances, January to December 2011

Location	Jan	Feb	Mar	Apr	May	Jun	Jul	Aug	Sep	Oct	Nov	Dec	Total	%
Public place	46	35	25	41	44	48	44	38	33	43	39	49	485	65
Home	11	10	11	10	10	9	14	9	7	7	14	10	122	16
Other	11	***	9	12	12	5	7	8	9	8	10	15	109	15
Work	***	***	***	***	***	<6	***	***	***	***	***	***	<28	4
Educational Establishment	***	***	***	***	***	***	***	***	***	***	***	***	***	0
Total	72	48	49	65	68	67	67	56	51	60	66	76	745	100

Published February 2012
 Johnathan Rooney (TIIG Officer)
 Centre for Public Health, Faculty of Health and Applied Social Sciences, Liverpool John Moores University
 2nd Floor, Henry Cotton Campus, Liverpool, L3 2ET
 Tel: 0151 231 4500 Email: j.rooney@ljmu.ac.uk
 Website: www.tiig.info (please note all data requests should be made through the TIIG website)