



# TIIG

INJURY SURVEILLANCE IN THE NORTH WEST OF ENGLAND

## Southport and Formby District General Hospital Emergency Department Monthly Bulletin: April 2012 to March 2013

This bulletin provides a breakdown of all injury attendances at Southport and Formby District General Hospital Emergency Department (ED) between April 2012 and March 2013.

Between April 2012 and March 2013 there were 10,982 ED attendances. Injury attendances peaked in May (n=996) with February having the least number of attendances (n=774) (**Figure 1**).

**Figure 2** illustrates injury attendances by gender. Across the whole year there were slightly more female (n=5,585; 51%) than male (n=5,393; 49%) presentations at Southport and Formby District General Hospital ED.

The age group of injury attendances are presented in **Figure 3**. Thirty-eight per cent of all injury attendances were aged 60 plus (n=4,153) and 36% were aged 30-59 years (n=3919). Just over a quarter (26%) were aged between 15 and 29 years (n=2,858). Less than 1% (n=50) of attendees were under the age of 15 which is likely to be due to the close proximity of the Paediatric ED located at Ormskirk General Hospital.

**Table 1** details the injury group of Southport and Formby District General Hospital ED attendances. The majority of injury attendances were classified as other injury (n=7,790; 71%), compared to less than

one in ten (9%) recorded as road traffic collisions (RTC) (n=1,028) and 8% recorded as sports injury (n=835).

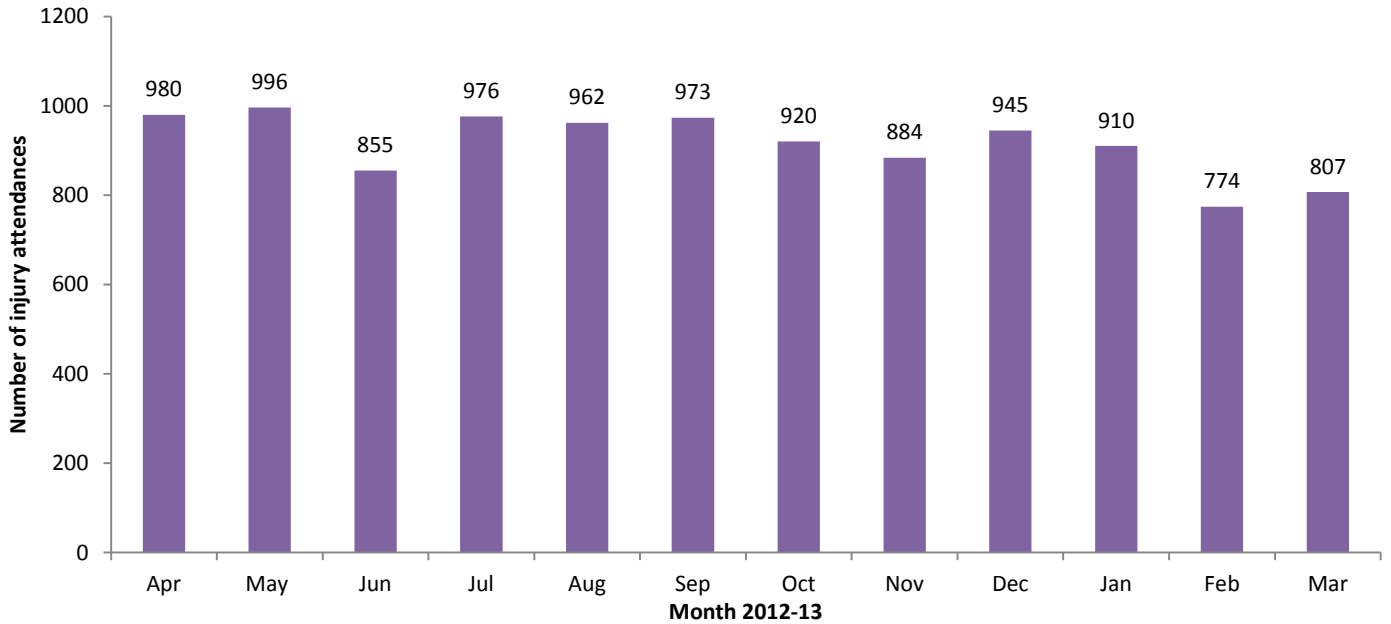
The source of referral for patients presenting with injuries are illustrated in **Table 2**. The majority (71%) of injury presentations were self-referrals (n=7,753). Sixteen per cent of attendances were referred by emergency services (n=1,745).

**Table 3** presents injury attendances by location of incident. Just over half (51%) of all injuries were reported to have taken place in the home (n=5,635). Just over a third (34%) of injuries occurred in a public place (n=3,772).

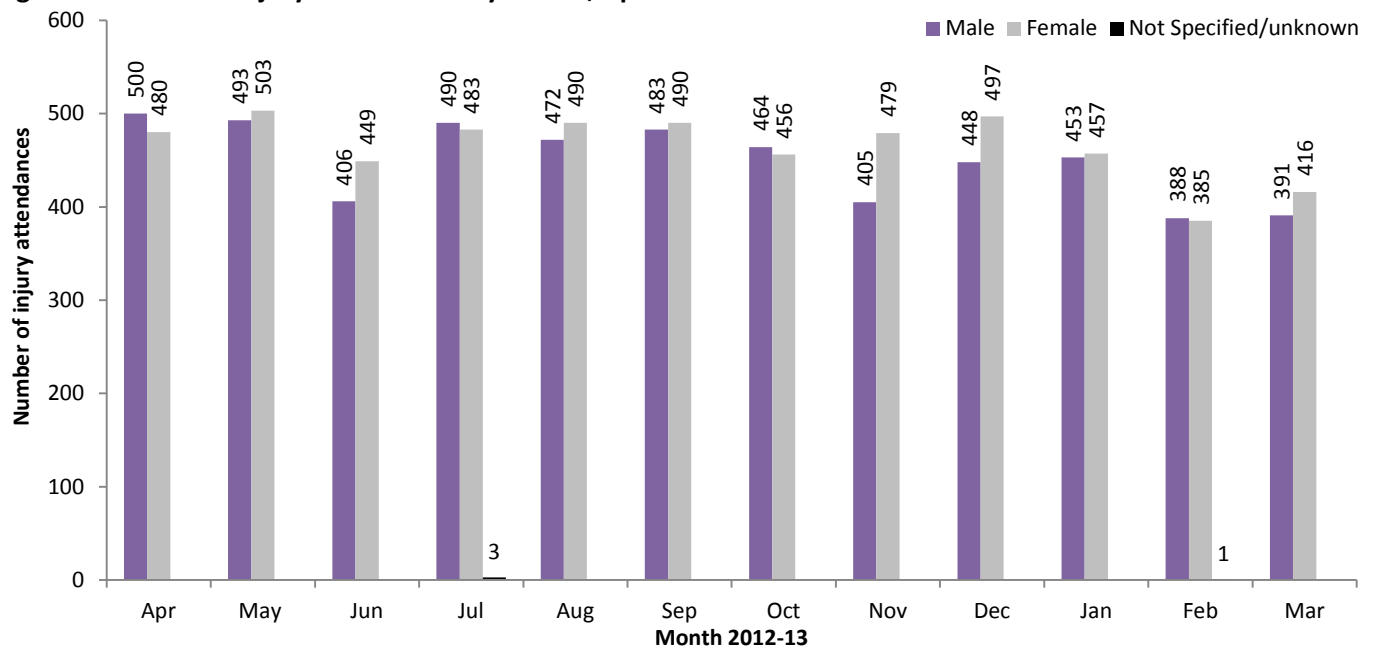
The disposal method of injury attendances are displayed in **Table 4**. Almost half (47%) of attendees were discharged with no follow-up required (n=5,203). Just less than one-fifth (19%) were admitted to hospital (n=2,076) and a tenth (10%) were referred to the fracture clinic (n=1,056).

There were 592 assault attendees presenting at Southport and Formby District General Hospital ED between April 2012 and March 2013. The majority (72%) of assault presentations were male (n=429) with 57% of assaults occurring within those aged 15-29 years (n=337). As **Table 5** shows, the primary location of assault was in a public place (62%).

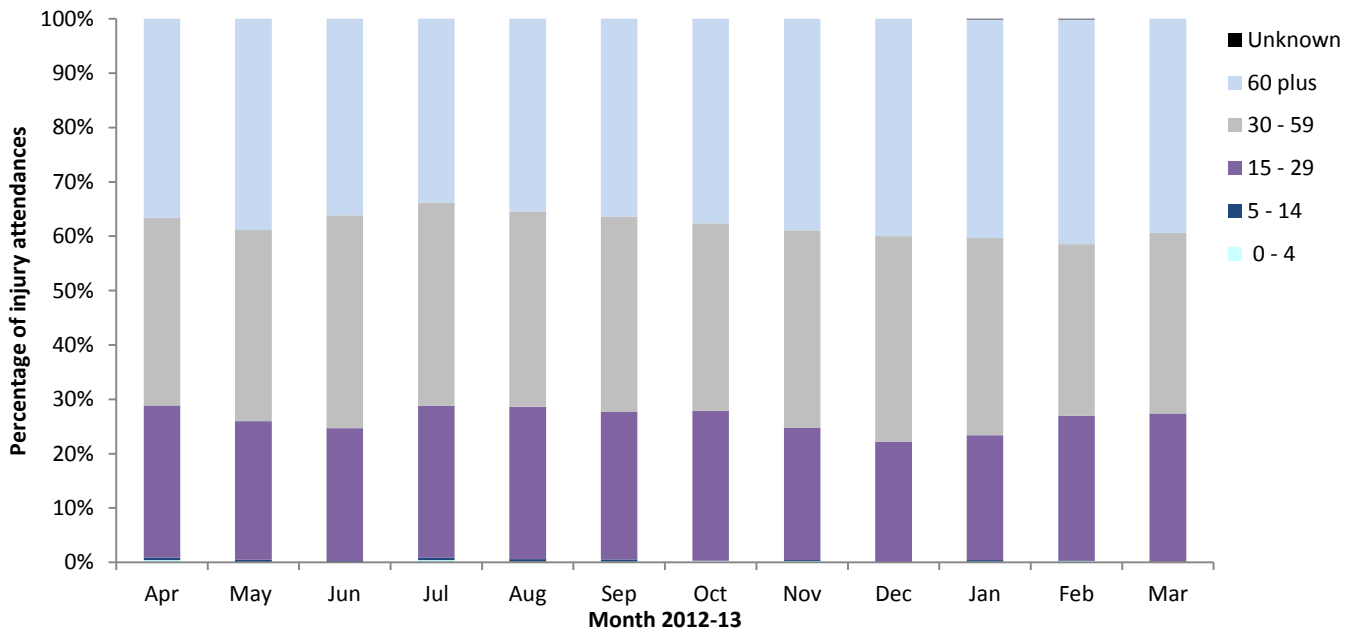
**Figure 1: Total number of injury attendances by month, April 2012 to March 2013**



**Figure 2: Gender of injury attendances by month, April 2012 to March 2013**



**Figure 3: Age group of injury attendances by month, April 2012 to March 2013**



**Table 1: Injury attendances by injury group, April 2012 to March 2013\***

Injury Group	Apr	May	Jun	Jul	Aug	Sep	Oct	Nov	Dec	Jan	Feb	Mar	Total	%
Other injury	653	684	578	691	721	705	643	613	704	683	557	558	7790	71
Road traffic accident	94	98	82	81	70	72	99	112	99	71	72	78	1028	9
Sports injury	115	84	62	69	58	92	74	63	28	47	63	80	835	8
Deliberate self-harm	57	63	74	80	61	52	67	54	64	55	47	63	737	7
Assault	61	67	59	55	52	52	37	42	50	54	35	28	592	5
<b>Total</b>	<b>980</b>	<b>996</b>	<b>855</b>	<b>976</b>	<b>962</b>	<b>973</b>	<b>920</b>	<b>884</b>	<b>945</b>	<b>910</b>	<b>774</b>	<b>807</b>	<b>10982</b>	<b>100</b>

**Table 2: Injury attendances by source of referral, April 2012 to March 2013<sup>1\*</sup>**

Source of Referral	Apr	May	Jun	Jul	Aug	Sep	Oct	Nov	Dec	Jan	Feb	Mar	Total	%
Self-referral	691	708	618	737	708	701	631	595	651	612	537	564	7753	71
Emergency services	136	136	133	131	138	168	160	193	165	134	129	122	1745	16
Other	87	81	71	57	67	70	83	67	67	96	69	72	887	8
Health care provider: same or other	30	26	9	13	15	9	10	9	16	27	12	10	186	2
Police	12	22	16	17	20	7	19	9	15	11	6	11	165	2
General medical practitioner	13	10	***	10	5	7	10	***	10	16	14	18	121	1
Unknown	***	12	***	9	6	11	6	6	16	8	7	9	99	1
Work	***	***	***	***	***	***	***	***	***	5	***	***	18	0
Educational establishment	***	***	***	***	***	***	***	***	***	***	***	***	<10	0
Local authority social services	***	***	***	***	***	***	***	***	***	***	***	***	***	0
<b>Total</b>	<b>980</b>	<b>996</b>	<b>855</b>	<b>976</b>	<b>962</b>	<b>973</b>	<b>920</b>	<b>884</b>	<b>945</b>	<b>910</b>	<b>774</b>	<b>807</b>	<b>10982</b>	<b>100</b>

**Table 3: Injury attendances by location of incident, April 2012 to March 2013<sup>1\*</sup>**

Location	Apr	May	Jun	Jul	Aug	Sep	Oct	Nov	Dec	Jan	Feb	Mar	Total	%
Home	483	506	424	518	486	509	471	441	512	468	408	409	5635	51
Public place	385	380	299	317	331	328	308	310	303	273	260	278	3772	34
Other	75	76	108	104	107	96	103	94	84	127	69	88	1131	10
Work	<35	<35	<25	<40	<40	<45	<40	<40	<50	<40	<40	<35	428	4
Educational establishment	***	***	***	***	***	***	***	***	***	***	***	***	16	0
<b>Total</b>	<b>980</b>	<b>996</b>	<b>855</b>	<b>976</b>	<b>962</b>	<b>973</b>	<b>920</b>	<b>884</b>	<b>945</b>	<b>910</b>	<b>774</b>	<b>807</b>	<b>10982</b>	<b>100</b>

<sup>1</sup> Please note that all numbers less than five have been suppressed (with \*\*\*) in line with patient confidentiality and if there is only one number in a category then two numbers will be suppressed to prevent back calculations from totals.

\*Please note that in all tables percentages may not add up to 100 due to rounding.

**Table 4: Disposal of all injury attendances, April 2012 to March 2013<sup>1\*</sup>**

Disposal	Apr	May	Jun	Jul	Aug	Sep	Oct	Nov	Dec	Jan	Feb	Mar	Total	%
Discharged - did not require any follow up treatment	444	424	385	422	487	478	451	467	458	458	378	351	5203	47
Admitted	166	192	174	163	172	195	173	173	191	172	137	168	2076	19
Discharged - follow up treatment to be provided by other healthcare provider	146	160	123	164	83	95	98	77	94	85	98	102	1325	12
Referred to fracture clinic	99	97	64	110	94	93	73	70	89	88	87	92	1056	10
Left department before being treated	55	46	48	37	60	50	54	35	56	41	23	35	540	5
Referred to other health care professional	35	27	22	25	17	31	21	19	23	20	20	20	280	3
Transferred to other health care provider	10	15	5	23	19	17	17	6	5	12	7	7	143	1
Referred to other out-patient Clinic	17	14	13	12	13	5	8	14	5	13	15	8	137	1
Referred to ED clinic	***	11	11	7	11	6	19	16	16	12	<6	14	131	1
Left department having refused treatment	***	8	10	12	6	***	5	6	8	8	***	8	80	1
Other	***	***	***	***	***	***	***	***	***	***	***	***	6	0
Unknown	***	***	***	***	***	***	***	***	***	***	***	***	***	0
Died in department	***	***	***	***	***	***	***	***	***	***	***	***	***	0
<b>Total</b>	<b>980</b>	<b>996</b>	<b>855</b>	<b>976</b>	<b>962</b>	<b>973</b>	<b>920</b>	<b>884</b>	<b>945</b>	<b>910</b>	<b>774</b>	<b>807</b>	<b>10982</b>	<b>100</b>

**Table 5: Location of assault for assault attendances, April 2012 to March 2013<sup>1\*</sup>**

Location	Apr	May	Jun	Jul	Aug	Sep	Oct	Nov	Dec	Jan	Feb	Mar	Total	%
Public place	36	38	44	29	34	30	27	24	31	32	21	19	365	62
Other	12	14	9	13	8	7	***	9	10	11	7	***	106	18
Home	11	10	5	12	10	12	5	9	7	9	6	5	101	17
Work	***	<6	***	***	***	***	***	***	***	***	***	***	<20	3
Educational establishment	***	***	***	***	***	***	***	***	***	***	***	***	***	0
<b>Total</b>	<b>61</b>	<b>67</b>	<b>59</b>	<b>55</b>	<b>52</b>	<b>52</b>	<b>37</b>	<b>42</b>	<b>50</b>	<b>54</b>	<b>35</b>	<b>28</b>	<b>592</b>	<b>100</b>

Published May 2013

Karen Swarbrick (TIIG Researcher/Analyst)

Centre for Public Health, Liverpool John Moores University, 2nd Floor, Henry Cotton Building, Liverpool, L3 2ET

Tel: 0151 231 4498 Email: K.A.Swarbrick@ljmu.ac.uk

Website: [www.tiig.info](http://www.tiig.info) (please note data requests should be made through the website)