

TIIG
INJURY SURVEILLANCE IN THE NORTH WEST OF ENGLAND

Southport and Formby District General Hospital
Emergency Department

Monthly Bulletin: October 2012 to September 2013

This bulletin provides a breakdown of all injury attendances at Southport and Formby District General Hospital Emergency Department (ED) between October 2012 and September 2013.

During this twelve month period, there were 10,343 ED attendances. Injury attendances peaked in December 2012 (n=945), compared to 764 in April, the month with the least number of attendances (**Figure 1**).

There were more females than males attending the ED between October 2012 and September 2013 (females=5,335; 52%) (**Figure 1**).

The age group of injury attendances are presented in **Figure 2**. Almost two-fifths (39%) were aged 60 plus (n=4,049), followed by 35% aged 30-59 years (n=3,643) and a quarter (25%) aged 15-29 (n=2,588). Just 1% (n=55) of attendees were under the age of 15 which is likely to be due to the close proximity of the Paediatric ED located at Ormskirk General Hospital.

Table 1 details the injury group of Southport and Formby District General Hospital ED attendances. The majority (72%) of injuries were classified as other injury (n=7,445), compared to less than one in ten (9%) recorded as road traffic collisions (RTCs) (n=953). Sports injury and deliberate self-harm (DSH) each accounted for 7% of attendances.

The source of referral for patients attending the ED is illustrated in **Table 2**. The majority (71%) of injury presentations were self-referrals (n=7,358). Fifteen per cent of attendees were referred by the emergency services (n=1,501).

Table 3 presents injury attendances by incident location. Just over half (51%) of all injuries were

reported to have taken place in the home (n=5,305) followed by just over a third (34%) of injuries which occurred in a public place (n=3,489).

The disposal method of injury attendances are displayed in **Table 4**. Almost half (46%) of attendees were discharged with no follow-up required (n=4,804). Just less than one-fifth (19%) were admitted to hospital (n=1,969), 12% discharged with follow-up treatment to be provided by another healthcare provider (n=1,278) and a tenth (10%) were referred to the fracture clinic (n=1,009).

Assault attendances

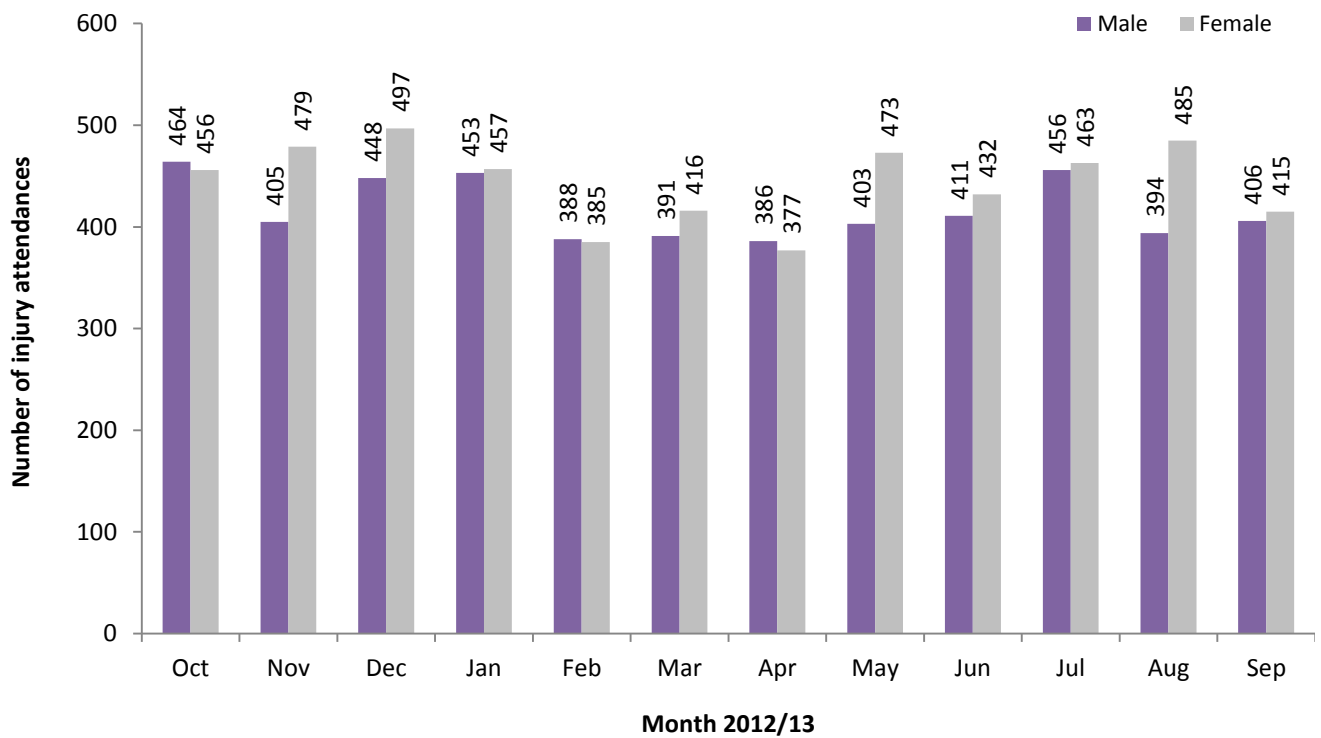
There were 497 assault attendees presenting to Southport and Formby District General Hospital ED between October 2012 and September 2013.

The month with the highest number of assault attendances was July 2013 (n=57) with the majority (73%) of presentations male (males=362) (**Figure 3**).

Table 5 details the age group of assault attendances for each month. Almost three-fifths (57%) were aged 15-29 years (n=282), followed by 40% aged 30-59 (n=200).

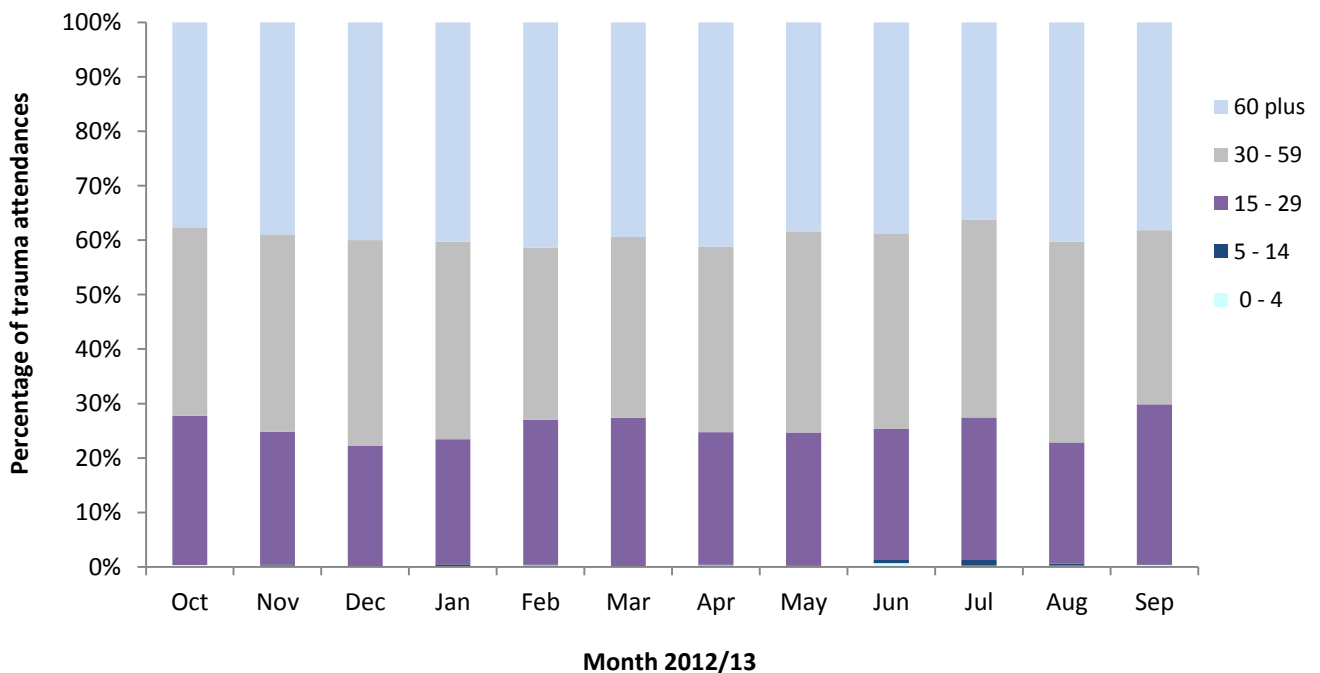
The incident location for assault attendances to the ED is presented in **Table 6**. Over three-fifths (61%) occurred in a public place (n=301), followed by 20% at home (n=99).

Figure 1: Gender of ED injury attendances by month, October 2012 to September 2013*



* There were three attendances where the gender was not specified.

Figure 2: Age group of ED injury attendances by month, October 2012 to September 2013**



** There were 8 attendances where the age was unknown.

Table 1: ED attendances by injury group and month, October 2012 to September 2013

Injury group	Oct	Nov	Dec	Jan	Feb	Mar	Apr	May	Jun	Jul	Aug	Sep	Total	%
Other injury	643	613	704	683	557	558	549	601	600	697	660	580	7445	72
RTC	99	112	99	71	72	78	52	80	67	72	70	81	953	9
Sports injury	74	63	28	47	63	80	70	75	61	50	60	57	728	7
DSH	67	54	64	55	47	63	62	80	63	43	50	72	720	7
Assault	37	42	50	54	35	28	31	40	53	57	39	31	497	5
Total	920	884	945	910	774	807	764	876	844	919	879	821	10343	100

Table 2: ED attendances by source of referral and month, October 2012 to September 2013¹

Source of referral	Oct	Nov	Dec	Jan	Feb	Mar	Apr	May	Jun	Jul	Aug	Sep	Total	%
Self-referral	631	595	651	612	537	564	565	673	593	696	653	588	7358	71
Emergency services	160	193	165	134	129	122	103	78	121	98	90	108	1501	15
Other	83	67	67	96	69	72	54	78	87	89	100	86	948	9
Health care provider: same or other	10	9	16	27	12	10	25	23	23	14	20	17	206	2
Police	19	9	15	11	6	11	10	11	15	11	<15	<20	150	1
General medical practitioner	10	***	10	16	14	18	<10	10	***	11	***	***	108	1
Unknown	<10	6	16	8	7	<10	0	0	0	0	0	0	52	1
Work	***	***	***	<10	0	0	***	***	0	0	0	0	14	0
Educational establishment	0	0	***	***	0	***	0	0	***	0	0	0	<10	0
Local authority social services	0	0	0	0	0	0	0	***	0	0	0	0	***	0
Total	920	884	945	910	774	807	764	876	844	919	879	821	10343	100

Table 3: ED attendances by location of incident and month, October 2012 to September 2013¹

Location	Oct	Nov	Dec	Jan	Feb	Mar	Apr	May	Jun	Jul	Aug	Sep	Total	%
Home	471	441	512	468	408	409	410	464	411	460	447	404	5305	51
Public place	308	310	303	273	260	278	268	268	308	315	302	296	3489	34
Other	103	94	84	127	69	88	56	113	94	100	98	87	1113	11
Work	<40	<40	46	<40	<40	<35	<30	<35	31	44	32	<35	422	4
Educational establishment	***	***	0	***	***	***	***	***	0	0	0	***	14	0
Total	920	884	945	910	774	807	764	876	844	919	879	821	10343	100

Table 4: ED attendances by discharge destination and month, October 2012 to September 2013^{1,2}

Discharge destination	Oct	Nov	Dec	Jan	Feb	Mar	Apr	May	Jun	Jul	Aug	Sep	Total	%
Discharged - did not require any follow up treatment	451	467	458	458	378	351	320	402	352	442	381	344	4804	46
Admitted	173	173	191	172	137	168	141	174	167	151	162	160	1969	19
Discharged - follow up treatment to be provided by other HCP	98	77	94	85	98	102	112	99	107	112	155	139	1278	12
Referred to fracture clinic	73	70	89	88	87	92	91	87	97	84	84	67	1009	10
Left department before being treated	54	35	56	41	23	35	26	40	59	49	28	29	475	5
Referred to other health care professional	21	19	23	20	20	20	22	27	23	26	18	25	264	3
Referred to ED clinic	19	16	16	12	5	14	13	17	15	16	21	23	187	2
Transferred to other HCP	17	6	5	12	7	7	18	10	14	17	10	13	136	1
Referred to other out-patient clinic	<10	14	5	13	15	8	11	12	<10	9	9	15	128	1
Left department having refused treatment	5	<10	8	<10	***	<10	7	8	***	13	9	6	81	1
Other	***	***	0	0	***	***	***	0	0	0	***	0	8	0
Died in department	0	0	0	***	0	0	***	0	0	0	***	0	***	0
Unknown	0	0	0	0	***	0	0	0	0	0	0	0	***	0
Total	920	884	945	910	774	807	764	876	844	919	879	821	10343	100

¹ Please note that all numbers less than five have been suppressed (with ***) in line with patient confidentiality. If there is only one number less than five in a category then two numbers will be suppressed to prevent back calculations from totals.

² HCP = Health care provider.

Assaults

Figure 3: Number of ED assault attendances by gender and month, October 2012 to September 2013³

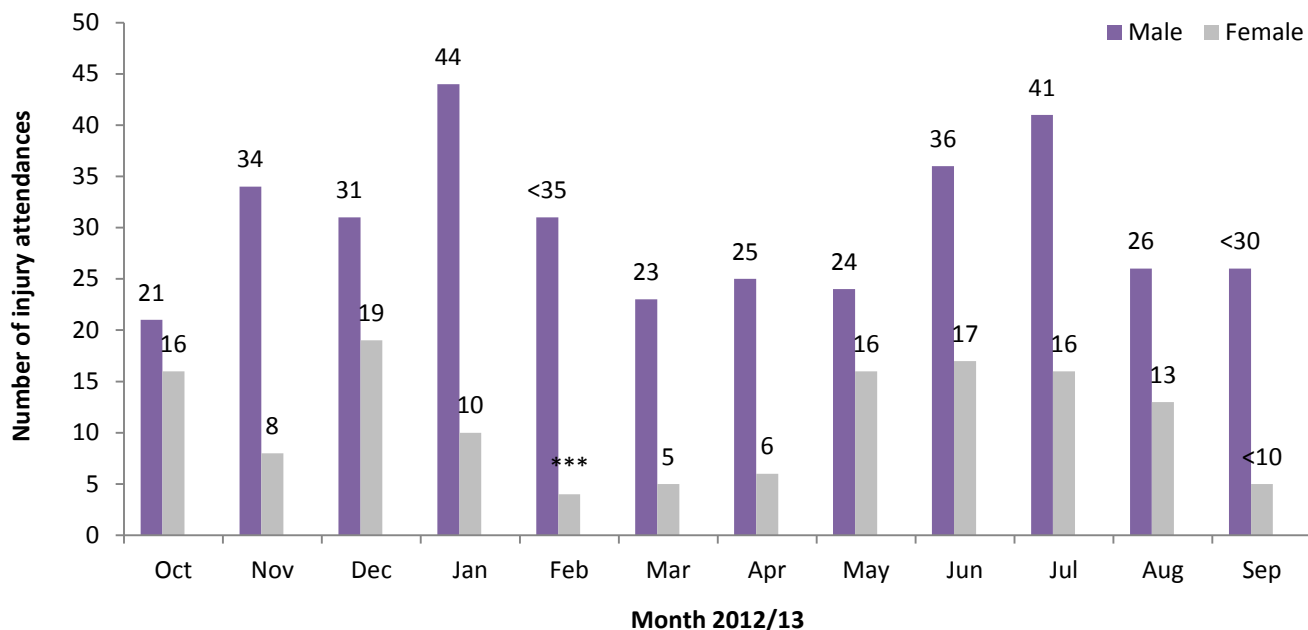


Table 6: ED assault attendances by age group and month, October 2012 to September 2013*³

Age group	Oct	Nov	Dec	Jan	Feb	Mar	Apr	May	Jun	Jul	Aug	Sep	Total	%
15-29	21	21	32	33	18	16	20	16	32	29	21	23	282	57
30-59	<15	<25	18	<20	<15	<15	11	<25	<25	<30	<20	8	200	40
60+	***	***	0	***	***	***	0	***	***	***	***	0	15	3
Total	37	42	50	54	35	28	31	40	53	57	39	31	497	100

* There were no assault attendances in the 0-4 and 5-14 years age groups.

Table 7: ED assault attendances by location of incident and month, October 2012 to September 2013³

Location	Oct	Nov	Dec	Jan	Feb	Mar	Apr	May	Jun	Jul	Aug	Sep	Total	%
Public place	27	24	31	32	21	19	16	22	32	34	20	23	301	61
Home	5	9	7	9	6	5	10	<15	<15	11	10	***	99	20
Other	***	9	<15	<15	<10	***	***	***	9	<10	<10	***	77	15
Work	***	0	***	***	***	***	***	0	***	***	***	***	<20	4
Educational establishment	0	0	0	0	0	***	0	0	0	0	0	***	***	0
Total	37	42	50	54	35	28	31	40	53	57	39	31	497	100

Published October 2013

Karen A Critchley (née Swarbrick) – TIIG Researcher/Analyst

Centre for Public Health, Faculty of Education, Health and Community, Liverpool John Moores University,
2nd Floor, Henry Cotton Building, Liverpool L3 2ET

T: 0151 231 4498 | E: K.A.Swarbrick@ljmu.ac.uk | W: www.tiig.info and www.cph.org.uk

(Please note data requests should be made through the TIIG website)

³ Please note that all numbers less than five have been suppressed (with ***) in line with patient confidentiality. If there is only one number less than five in a category then two numbers will be suppressed to prevent back calculations from totals.