



INJURY SURVEILLANCE IN THE NORTH WEST OF ENGLAND

THE ROYAL LIVERPOOL UNIVERSITY HOSPITAL EMERGENCY DEPARTMENT

MONTHLY BULLETIN: OCTOBER 2013 TO SEPTEMBER 2014

This bulletin provides a breakdown of all injury attendances to the Royal Liverpool University Hospital Emergency Department (ED) between October 2013 and September 2014.

During this twelve month period there were 29,670 injury attendances. The month with the highest number of attendances, calculated as a daily average, was January 2014 (99 per day) compared to August 2014, the month with the fewest (64 per day; **Figure 1**).

**Figure 1** gives a breakdown of monthly injury attendances by gender, illustrating that there were more males (53%) than females presenting to the ED. The majority of injury attendances were aged 15 years and over, with the highest proportion (40%) aged between 30 and 59 years (**Figure 2**). The low number of injury attendances made by those under the age of 15 years could be attributed to the close proximity of a children's ED (Alder Hey Children's Hospital).

**Table 1** details the injury group of attendees. The majority (72%) of injury attendances have been classified as other injury. This category includes injuries such as head injuries and arm injuries. Over one in ten (12%) injuries were recorded as a fall. Three quarters (75%) of all injuries occurred in the home (**Table 2**).

The disposal method of attendees can give an indication of the severity of the injury sustained. Over four in ten (41%) injury attendances were discharged from the ED and over three in ten (32%) were admitted to hospital (**Table 3**).

### Assault questionnaire<sup>1</sup>

The Royal Liverpool University Hospital ED collects additional information on assault attendances and a summary of this data is provided in this report. More detailed information, including specific location of the assault (e.g. pub name/street), is provided by TIIG to local partners and agencies such as *CitySafe* in a separate report to the one produced here.

Between October 2013 and September 2014 there were 1,477 assault attendances to the ED. Assault attendees were predominately male (73%) and 54% were aged between 15 and 29 years.

*Where data collected<sup>2</sup>*, 61% of assault attendees had consumed alcohol in the three hours prior to the incident (**Table 4**). Over seven in ten (71%) assault locations were recorded as unknown and *of those known<sup>2</sup>*, over half (51%) occurred in the street (**Table 5**).

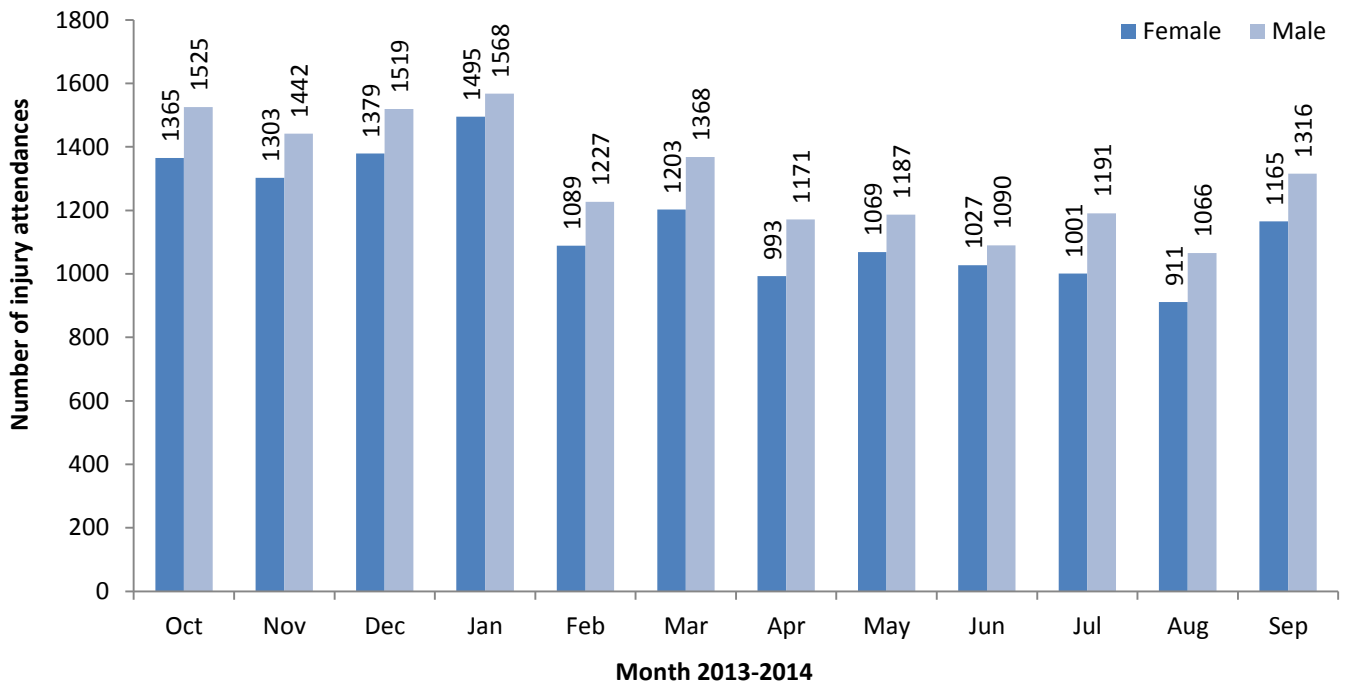
**Table 6** shows that the attacker was unknown in the majority (74%) of incidents. *Where data collected<sup>2</sup>*, 69% of assault attendees had been assaulted by a stranger.

**Table 7** shows the weapon used in the assaults. *Of those with a known weapon type<sup>2</sup>*, 79% involved a body part, such as a fist.

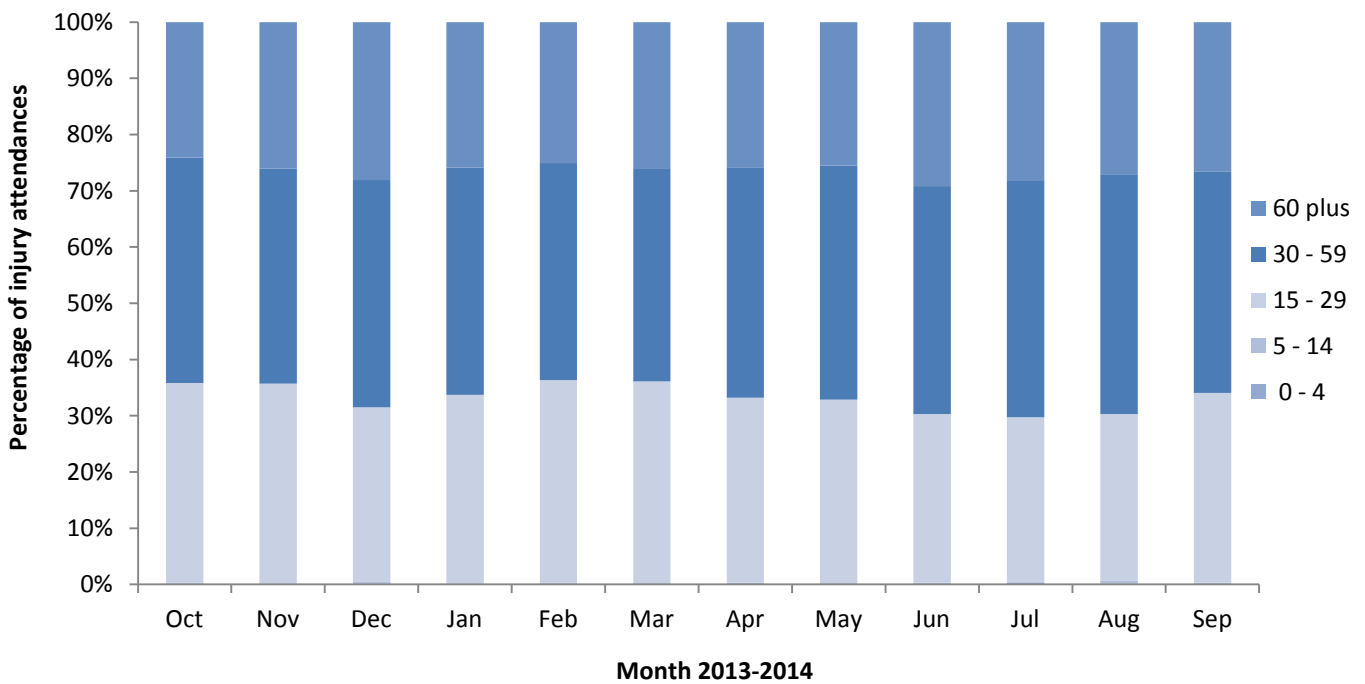
<sup>1</sup> Please note that although a patient may complete the assault patient questionnaire, data may not be provided for each question as the patient can refuse to answer or may be unable to answer particular questions. Data provided in the following analyses represent those patients who completed each question.

<sup>2</sup> Not including; unable to answer, refused to answer and unknown.

**Figure 1: ED injury attendances by gender and month, October 2013 to September 2014**



**Figure 2: ED injury attendances by age group and month, October 2013 to September 2014**



**Table 1: ED injury attendances by injury group and month, October 2013 to September 2014**

Injury group	Oct	Nov	Dec	Jan	Feb	Mar	Apr	May	Jun	Jul	Aug	Sep	Total	%
Other injury	2113	2066	2094	2359	1631	1807	1446	1586	1500	1605	1353	1801	21361	72%
Fall	318	286	337	287	280	321	326	285	296	295	279	305	3615	12%
Assault	157	144	160	134	135	138	135	122	97	65	105	85	1477	5%
Overdose	158	119	137	146	129	125	128	124	97	128	124	111	1526	5%
Sport injury	75	65	63	57	82	107	62	51	47	28	52	97	786	3%
Road traffic collision	31	32	54	40	15	29	21	34	32	34	27	30	379	1%
Self-harm	22	15	33	26	25	25	29	40	28	17	17	30	307	1%
Burn	16	18	20	14	19	19	17	14	20	20	20	22	219	1%
<b>Total</b>	<b>2890</b>	<b>2745</b>	<b>2898</b>	<b>3063</b>	<b>2316</b>	<b>2571</b>	<b>2164</b>	<b>2256</b>	<b>2117</b>	<b>2192</b>	<b>1977</b>	<b>2481</b>	<b>29670</b>	<b>100%</b>

**Table 2: ED injury attendances by incident location and month, October 2013 to September 2014**

Incident location	Oct	Nov	Dec	Jan	Feb	Mar	Apr	May	Jun	Jul	Aug	Sep	Total	%
Home	2153	2158	2142	2444	1718	1885	1546	1667	1535	1709	1459	1821	22237	75%
Other	378	286	383	316	289	379	319	308	336	221	238	357	3810	13%
Public place	298	241	317	234	257	252	259	233	205	228	229	242	2995	10%
Work	35	34	40	47	29	27	25	30	26	28	35	38	394	1%
Leisure facility	26	26	16	22	23	28	15	18	15	6	16	23	234	1%
<b>Total</b>	<b>2890</b>	<b>2745</b>	<b>2898</b>	<b>3063</b>	<b>2316</b>	<b>2571</b>	<b>2164</b>	<b>2256</b>	<b>2117</b>	<b>2192</b>	<b>1977</b>	<b>2481</b>	<b>29670</b>	<b>100%</b>

**Table 3: ED injury attendances by disposal method and month, October 2013 to September 2014<sup>3</sup>**

Disposal method	Oct	Nov	Dec	Jan	Feb	Mar	Apr	May	Jun	Jul	Aug	Sep	Total	%	
Discharged	1350	1174	1121	1253	921	1099	917	815	776	830	815	952	12023	41%	
Admitted	822	769	978	955	760	776	666	784	751	768	668	867	9564	32%	
Other	205	209	219	192	155	183	205	292	270	217	212	264	2623	9%	
Discharge - follow-up by GP	165	220	148	199	103	119	106	99	92	100	76	92	1519	5%	
Referred to other HCP	118	142	211	202	156	169	68	68	53	79	42	66	1374	5%	
Referred to fracture clinic	95	101	87	107	81	78	64	82	76	81	71	102	1025	3%	
Referred to ED clinic	30	39	27	34	45	36	31	28	21	34	14	36	375	1%	
Left - before being treated	43	27	37	57	49	34	41	26	32	42	24	48	460	2%	
Referred to OPD clinic	35	33	28	37	15	26	36	28	19	17	30	20	324	1%	
Transfer to other HCP	118	142	211	202	156	169	68	68	53	79	42	66	1374	5%	
Left - refused treatment	11	13	14	<15	<15	28	16	<25	<10	<15	10	14	168	1%	
Patient died in department	7	11	11	***	***	***	***	***	***	***	***	***	<10	56	0%
Restored to ward	0	0	0	0	0	***	***	0	0	0	***	***	6	0%	
<b>Total</b>	<b>2890</b>	<b>2745</b>	<b>2898</b>	<b>3063</b>	<b>2316</b>	<b>2571</b>	<b>2164</b>	<b>2256</b>	<b>2117</b>	<b>2192</b>	<b>1977</b>	<b>2481</b>	<b>29670</b>	<b>100%</b>	

<sup>3</sup> GP = General Practitioner; HCP = Health Care Provider; OPD = Outpatient Department.

## ASSAULTS

**Table 4: ED assault attendances by whether alcohol had been consumed in the three hours prior to the incident and month, October 2013 to September 2014<sup>3</sup>**

Alcohol consumed	Oct	Nov	Dec	Jan	Feb	Mar	Apr	May	Jun	Jul	Aug	Sep	Total	%
Unknown	130	113	121	107	118	112	113	85	53	40	43	47	1082	73%
Yes	22	17	31	20	12	17	8	19	15	11	27	15	214	14%
No	5	9	***	<10	5	***	<15	10	21	14	27	19	134	9%
Unable to answer	0	***	***	0	0	***	***	<10	<10	0	***	***	28	2%
Refused to answer	0	***	***	***	0	***	0	***	***	0	<10	***	19	1%
<b>Total</b>	<b>157</b>	<b>144</b>	<b>160</b>	<b>134</b>	<b>135</b>	<b>138</b>	<b>135</b>	<b>122</b>	<b>97</b>	<b>65</b>	<b>105</b>	<b>85</b>	<b>1477</b>	<b>100%</b>

**Table 5: ED assault attendances by incident location and month, October 2013 to September 2014<sup>3</sup>**

Incident location	Oct	Nov	Dec	Jan	Feb	Mar	Apr	May	Jun	Jul	Aug	Sep	Total	%
Unknown	130	113	121	107	118	112	113	80	42	37	32	43	1048	71%
Street	11	12	16	12	6	10	11	22	32	17	37	22	208	14%
Bar/pub	6	6	12	6	***	8	***	5	***	***	7	***	62	4%
Your home	***	***	6	***	0	***	***	***	8	***	10	10	53	4%
Club	***	***	***	***	***	***	***	***	8	0	***	***	26	2%
Other	***	***	***	0	6	***	***	***	0	***	***	0	18	1%
Someone else's home	***	***	0	0	***	***	***	***	0	***	***	***	17	1%
Workplace	0	***	***	***	***	0	***	***	***	0	***	***	16	1%
Refused to answer	***	0	***	***	0	***	0	***	***	0	5	***	15	1%
Unable to answer	0	***	***	***	0	***	***	***	***	0	***	***	12	1%
<b>Total</b>	<b>157</b>	<b>144</b>	<b>160</b>	<b>134</b>	<b>135</b>	<b>138</b>	<b>135</b>	<b>122</b>	<b>97</b>	<b>65</b>	<b>105</b>	<b>85</b>	<b>1477</b>	<b>100%</b>

<sup>3</sup> Please note that all numbers less than five have been suppressed (with \*\*\*) in line with patient confidentiality. If there is only one number less than five in a category then two numbers have been suppressed to prevent back calculations from totals.

**Table 6: ED assault attendances by relationship to attacker and month, October 2013 to September 2014<sup>4</sup>**

Relationship to attacker	Oct	Nov	Dec	Jan	Feb	Mar	Apr	May	Jun	Jul	Aug	Sep	Total	%
Unknown	132	115	124	109	119	113	113	85	53	40	43	48	1094	74%
Stranger	19	19	29	18	13	18	9	21	21	10	39	24	240	16%
Acquaintance/Friend	***	***	***	***	***	***	***	***	9	5	9	5	48	3%
Partner	***	***	***	0	0	***	***	***	***	***	***	***	23	2%
Refused to answer	***	0	***	***	0	***	0	***	***	**	5	***	19	1%
Unable to answer	0	***	***	***	0	***	***	***	***	***	***	***	18	1%
Bouncer	***	***	0	***	***	0	***	0	***	***	***	0	11	1%
Family member	0	***	***	***	0	***	***	0	0	***	***	***	10	1%
Work mate/ client/Customer	***	0	0	***	***	0	***	***	0	0	***	0	9	1%
Ex-partner	0	0	0	0	0	0	***	0	***	0	***	0	5	0%
<b>Total</b>	<b>157</b>	<b>144</b>	<b>160</b>	<b>134</b>	<b>135</b>	<b>138</b>	<b>135</b>	<b>122</b>	<b>97</b>	<b>65</b>	<b>105</b>	<b>85</b>	<b>1477</b>	<b>100%</b>

**Table 7: ED assault attendances by method of attack and month, October 2013 to September 2014<sup>4</sup>**

Method of attack	Oct	Nov	Dec	Jan	Feb	Mar	Apr	May	Jun	Jul	Aug	Sep	Total	%
Unknown	130	113	121	107	118	115	113	85	55	40	44	47	1088	73%
Body part (e.g. fist)	21	24	27	21	15	17	19	23	30	17	43	23	280	19%
Other	***	***	***	***	0	***	0	***	***	***	***	8	29	2%
Unable to answer	0	***	***	***	0	***	***	***	***	***	***	***	20	1%
Knife	0	***	***	***	***	***	***	0	***	***	***	***	16	1%
Refused to answer	***	0	***	***	0	0	0	***	***	***	***	***	15	1%
Blunt object	0	0	***	0	0	***	***	***	***	***	***	***	13	1%
Bottle	0	***	***	0	0	***	0	***	0	***	***	0	11	1%
Glass	***	0	***	***	0	0	0	0	***	0	***	0	5	0%
<b>Total</b>	<b>157</b>	<b>144</b>	<b>160</b>	<b>134</b>	<b>135</b>	<b>138</b>	<b>135</b>	<b>122</b>	<b>97</b>	<b>65</b>	<b>105</b>	<b>85</b>	<b>1477</b>	<b>100%</b>

Published January 2015

Trauma and Injury Intelligence Group

Centre for Public Health, Faculty of Education, Health and Community, Liverpool John Moores University,  
2nd Floor, Henry Cotton Building, Liverpool L3 2ET

T: 0151 231 4498 | E: [tiig@ljmu.ac.uk](mailto:tiig@ljmu.ac.uk) | W: [www.tiig.info](http://www.tiig.info) and [www.cph.org.uk](http://www.cph.org.uk) | Twitter: [www.twitter.com/tiig\\_cph](https://twitter.com/tiig_cph)

<sup>4</sup> Please note that all numbers less than five have been suppressed (with \*\*\*) in line with patient confidentiality. If there is only one number less than five in a category then two numbers have been suppressed to prevent back calculations from totals.