



**TIIG**  
INJURY SURVEILLANCE IN THE NORTH WEST OF ENGLAND

**WHISTON HOSPITAL EMERGENCY DEPARTMENT**

**MONTHLY BULLETIN: OCTOBER 2013 TO SEPTEMBER 2014**

This bulletin provides a breakdown of all injury attendances at Whiston Hospital Emergency Department (ED) between October 2013 and September 2014.

During this twelve month period there were 38,630 injury attendances in this period. The month with the highest number of attendances, calculated as a daily average, was July 2014 (122 per day) compared to December 2013, the month with the fewest (90 per day; **Figure 1**).

There were slightly more males (53%) than females presenting at Whiston Hospital ED (**Figure 1**). Over a third (35%) were aged between 30 and 59 years and 25% were aged between 15 and 29 years (**Figure 2**). The majority (95%) of injury attendances to the ED stated their ethnicity as White British (**Table 1**).

**Table 2** displays the injury group of attendances. Almost half (49%) of injury attendances were recorded as other injury while just over three in ten (31%) were recorded as falls. Road traffic collisions (RTCs) and sports injury each accounted for 5% of attendances.

**Table 3** displays the mode of arrival for patients presenting with injuries. The primary mode of arrival was private transport (67%) while 23% arrived by ambulance.

**Table 4** displays injury attendances by source of referral. Over half (51%) of injury attendees self-referred.

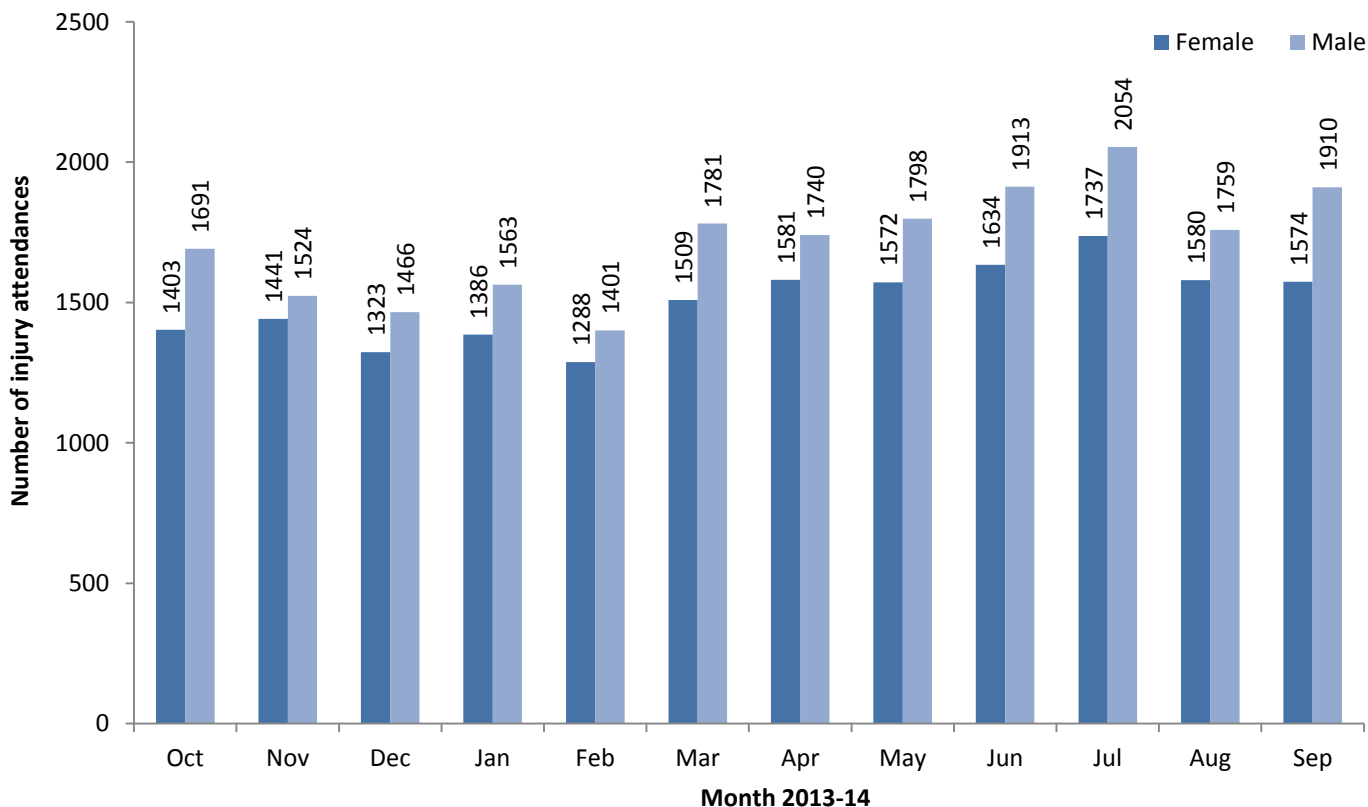
**Table 5** displays the discharge destination of injury attendances. Under half (47%) of attendees were discharged requiring no follow-up treatment, 22% were admitted to the hospital, 14% were discharged to a General Practitioner (GP) and 8% of patients were referred to the fracture clinic.

***Assault attendances***

Between October 2013 and September 2014 there were 1,334 assault attendees presenting at Whiston Hospital ED.

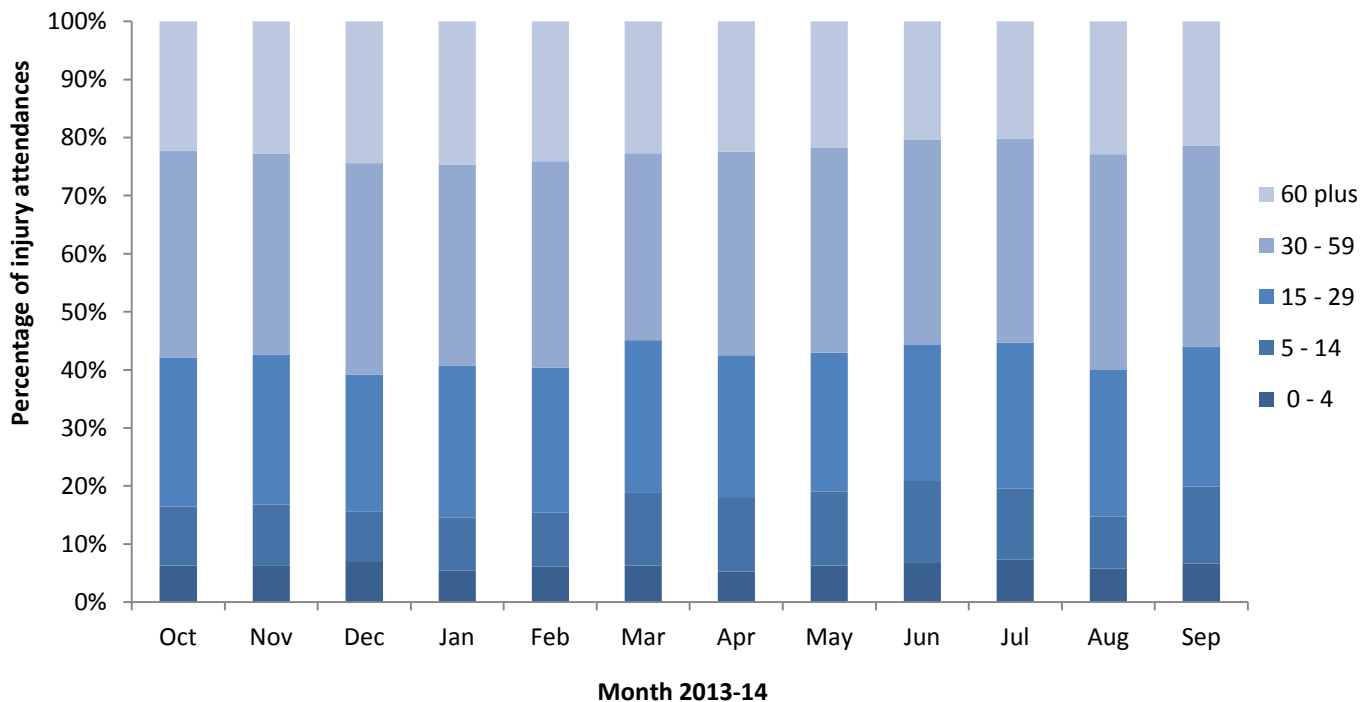
Assault attendees were mainly male (70%). Almost half (49%) were aged between 15 to 29 years and 44% were aged between 30 and 59 years.

**Figure 1: ED injury attendances by gender and month, October 2013 to September 2014<sup>^</sup>**



<sup>^</sup> There were <5 records where the gender was unknown; these have been omitted from the chart.

**Figure 2: ED injury attendances by age group and month, October 2013 to September 2014**



**Table 1: ED injury attendances by ethnicity and month, October 2013 to September 2014<sup>1,2</sup>**

Ethnicity	Oct	Nov	Dec	Jan	Feb	Mar	Apr	May	Jun	Jul	Aug	Sep	Total	%
White British	2945	2826	2652	2797	2570	3152	3162	3187	3388	3618	3195	3328	36820	95%
Other ethnic group	64	73	65	75	63	69	83	101	86	119	90	81	969	3%
Not stated	47	24	41	33	26	35	41	30	33	18	16	29	373	1%
Asian	20	15	12	10	11	11	15	22	18	15	18	26	193	1%
Other Mixed background	<10	9	6	12	8	14	8	10	13	11	***	6	109	0%
White Irish	***	13	5	16	<10	<10	7	11	***	<10	13	10	105	0%
Black	7	5	8	6	***	***	6	9	<10	***	***	5	61	0%
<b>Total</b>	<b>3094</b>	<b>2965</b>	<b>2789</b>	<b>2949</b>	<b>2689</b>	<b>3290</b>	<b>3322</b>	<b>3370</b>	<b>3547</b>	<b>3791</b>	<b>3339</b>	<b>3485</b>	<b>38630</b>	<b>100%</b>

**Table 2: ED injury attendances by injury group and month, October 2013 to September 2014<sup>§</sup>**

Injury group	Oct	Nov	Dec	Jan	Feb	Mar	Apr	May	Jun	Jul	Aug	Sep	Total	%
Other injury	1431	1458	1278	1348	1294	1576	1646	1692	1791	1902	1691	1777	18884	49%
Fall	981	912	916	987	840	1005	1004	992	1043	1154	974	983	11791	31%
RTC	154	175	165	180	164	180	158	200	189	185	178	176	2104	5%
Sports injury	177	106	72	111	116	204	195	157	187	198	162	210	1895	5%
Assault	142	109	139	116	97	95	91	121	118	110	97	99	1334	3%
Ingestion	86	74	74	77	66	95	83	80	69	83	77	83	947	2%
Burns and scalds	59	69	81	76	58	74	72	74	86	86	81	75	891	2%
Deliberate self-harm	64	62	64	54	54	61	73	54	64	73	79	82	784	2%
<b>Total</b>	<b>3094</b>	<b>2965</b>	<b>2789</b>	<b>2949</b>	<b>2689</b>	<b>3290</b>	<b>3322</b>	<b>3370</b>	<b>3547</b>	<b>3791</b>	<b>3339</b>	<b>3485</b>	<b>38630</b>	<b>100%</b>

<sup>§</sup> Due to low numbers, firework injuries have been included in the 'other' injury category (n=5).

**Table 3: ED injury attendances by mode of arrival and month, October 2013 to September 2014<sup>1</sup>**

Mode of arrival	Oct	Nov	Dec	Jan	Feb	Mar	Apr	May	Jun	Jul	Aug	Sep	Total	%
Private transport	1969	1899	1804	1880	1751	2215	2311	2335	2488	2589	2245	2418	25904	67%
Ambulance	739	734	727	760	676	767	700	751	759	834	793	728	8968	23%
Public transport	235	188	142	176	151	177	166	166	178	212	186	181	2158	6%
Walked in	82	83	54	62	61	75	83	69	70	100	71	75	885	2%
Other	24	28	19	28	15	24	33	17	23	25	19	50	305	0%
Police	35	18	32	31	26	18	<30	<25	21	25	19	27	301	0%
Unknown	10	15	11	12	9	14	***	<10	8	6	6	6	109	0%
<b>Total</b>	<b>3094</b>	<b>2965</b>	<b>2789</b>	<b>2949</b>	<b>2689</b>	<b>3290</b>	<b>3322</b>	<b>3370</b>	<b>3547</b>	<b>3791</b>	<b>3339</b>	<b>3485</b>	<b>38630</b>	<b>100%</b>

<sup>1</sup> Please note that all numbers less than five have been suppressed (with \*\*\*) in line with patient confidentiality. If there is only one number less than five in a category then two numbers have been suppressed to prevent back calculations from totals.

Percentages may not add up to 100% due to rounding.

<sup>2</sup> Other Mixed background = White and Asian, White and Black African, White and Black Caribbean; Asian = Bangladeshi, Chinese, Indian, Pakistani, Any other Asian background; Black = African, Caribbean, Any other Black background.

**Table 4: ED injury attendances by source of referral and month, October 2013 to September 2014**

Source of referral	Oct	Nov	Dec	Jan	Feb	Mar	Apr	May	Jun	Jul	Aug	Sep	Total	%
Self-referral	1614	1470	1508	1466	1383	1581	1805	1689	1783	1971	1802	1790	19862	51%
Family member	411	384	338	341	290	463	392	465	566	518	349	496	5013	13%
Emergency services	291	278	271	353	305	367	284	375	333	401	339	328	3925	10%
Other referrer	243	334	282	339	303	317	281	328	325	284	349	274	3659	10%
Walk-in-centre	215	207	168	204	174	237	246	239	238	284	239	284	2735	7%
Other hospital	96	90	64	53	62	91	95	86	92	107	87	80	1003	3%
GP	80	76	50	65	47	60	59	56	61	64	50	68	736	2%
Carer	43	42	35	35	49	55	53	32	53	60	55	51	563	2%
Police	53	27	37	35	32	23	39	28	26	32	27	30	389	1%
Employer	17	17	17	14	19	56	32	27	25	40	28	48	340	1%
Educational establishment	20	28	10	33	17	32	25	33	33	21	0	28	280	1%
Other health care professional	11	12	9	11	8	8	11	12	12	9	14	8	125	0%
<b>Total</b>	<b>3094</b>	<b>2965</b>	<b>2789</b>	<b>2949</b>	<b>2689</b>	<b>3290</b>	<b>3322</b>	<b>3370</b>	<b>3547</b>	<b>3791</b>	<b>3339</b>	<b>3485</b>	<b>38630</b>	<b>100%</b>

**Table 5: ED injury attendances by discharge destination and month, October 2013 to September 2014<sup>3</sup>**

Discharge destination	Oct	Nov	Dec	Jan	Feb	Mar	Apr	May	Jun	Jul	Aug	Sep	Total	%
Discharged no follow-up	1417	1348	1293	1395	1202	1495	1566	1601	1777	1853	1536	1608	18091	47%
Admissions	674	710	656	667	612	704	711	733	734	780	786	736	8503	22%
Discharged to GP	434	407	355	404	408	538	412	470	434	490	468	543	5363	14%
Fracture clinic	264	197	216	207	211	265	309	267	317	319	268	285	3125	8%
Did not wait	114	88	79	58	70	78	95	75	83	120	71	94	1025	3%
Other	59	63	65	72	60	72	66	79	84	75	75	71	841	2%
ED review clinic	66	68	56	73	63	84	82	70	52	62	53	71	800	2%
Sent to other hospital	21	25	20	29	32	22	22	30	25	22	27	21	296	1%
Return for treatment	18	21	19	22	12	10	27	17	15	23	19	24	227	1%
Discharged with ENT appointment at Whiston	15	21	16	17	8	7	11	15	15	17	15	20	177	0%
Outpatient clinic	9	17	14	***	<15	<15	<25	13	<15	29	21	12	173	0%
Physiotherapy clinic	***	0	0	***	***	***	***	0	0	***	0	0	<10	0%
Sent to GP assessment unit	***	0	0	0	0	0	0	0	***	0	0	0	***	0%
<b>Total</b>	<b>3094</b>	<b>2965</b>	<b>2789</b>	<b>2949</b>	<b>2689</b>	<b>3290</b>	<b>3322</b>	<b>3370</b>	<b>3547</b>	<b>3791</b>	<b>3339</b>	<b>3485</b>	<b>38630</b>	<b>100%</b>

\* ENT = Ear, nose and throat; GP = General Practitioner.

Published January 2015

Trauma and Injury Intelligence Group

Centre for Public Health, Faculty of Education, Health and Community, Liverpool John Moores University,  
2nd Floor, Henry Cotton Building, Liverpool L3 2ET

T: 0151 231 4498 | E: [tiig@ljmu.ac.uk](mailto:tiig@ljmu.ac.uk) | W: [www.tiig.info](http://www.tiig.info) and [www.cph.org.uk](http://www.cph.org.uk) | Twitter: [www.twitter.com/tiig\\_cph](https://twitter.com/tiig_cph)

<sup>3</sup> Please note that all numbers less than five have been suppressed (with \*\*\*) in line with patient confidentiality. If there is only one number less than five in a category then two numbers have been suppressed to prevent back calculations from totals.