



This bulletin provides a breakdown of all trauma¹ attendances at Whiston Hospital Accident and Emergency department (AED) between April 2008 and March 2009.

Figure 1 illustrates the number of trauma attendances by month of attendance. Trauma attendance peaked in May (n=4,160), with December (n=3,272) having the least number of trauma attendances.

Figure 1: Total number of trauma attendances by month, April 2008 to March 2009

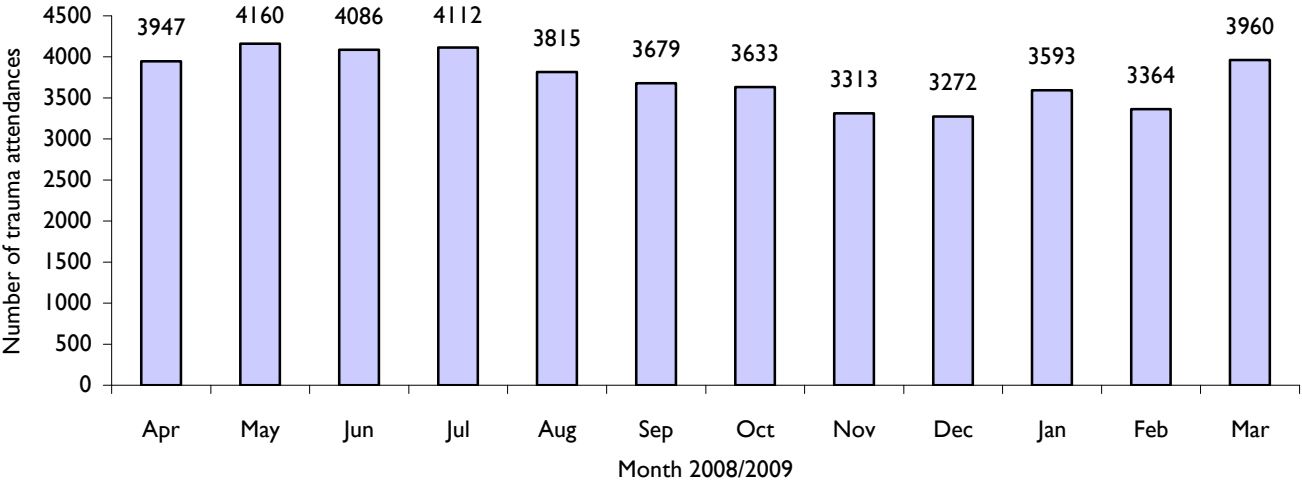


Figure 2 illustrates trauma attendances by gender. For all months there were slightly more male (51%) trauma attendances than female presenting at Whiston Hospital AED.

Figure 2: Gender of trauma attendances by month, April 2008 to March 2009

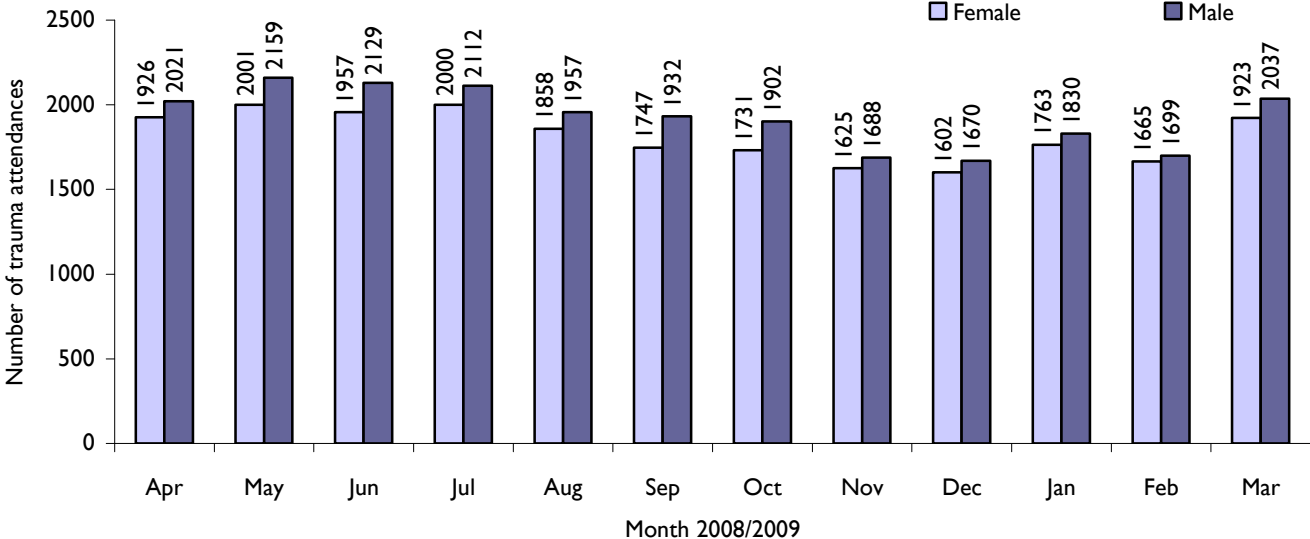
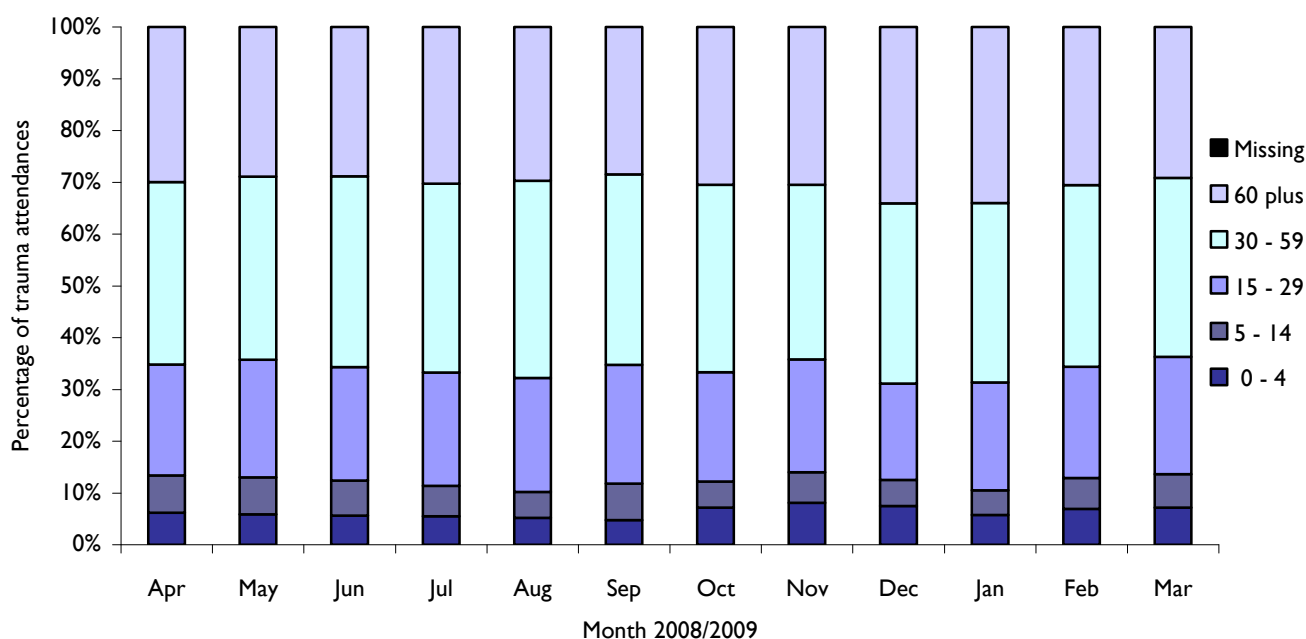


Figure 3 presents the age group of trauma attendances. Across the whole year over a third (36%) of trauma attendances were made by people aged 30 to 59 years and 22% by 15 to 29 year olds.

Figure 3: Age group of trauma attendances by month, April 2008 to March 2009



The majority (96%) of trauma attendances to Whiston AED stated their ethnicity as white (Table 1).

Table 1: Ethnicity of all trauma attendees, April 2008 to March 2009ⁱⁱ

Ethnicity	Apr	May	Jun	Jul	Aug	Sep	Oct	Nov	Dec	Jan	Feb	Mar	Total	%
White	3794	4025	3916	3948	3652	3534	3481	3192	3126	3456	3238	3766	43128	96
Black African	57	47	66	61	57	53	59	32	48	52	42	81	655	1
Other	21	28	28	28	27	29	23	25	19	22	26	30	306	1
Unknown	24	19	21	22	29	17	12	14	22	11	21	18	230	1
Not stated	13	12	16	16	14	8	11	11	14	16	11	18	160	0
Chinese	13	14	17	16	7	13	18	7	15	11	8	16	155	0
Black Caribbean	9	6	11	10	17	8	18	11	13	10	8	13	134	0
Other Asian background	<5	<5	<5	<5	<5	6	<5	6	5	7	<5	6	52	0
Bangladeshi	8	<5	5	<5	5	<5	<5	<5	<5	<5	6	5	50	0
Black other	<5	<5	<5	5	<5	<5	<5	<5	<5	<5	<5	5	31	0
Indian	<5	<5	<5	<5	<5	<5	<5	<5	<5	<5	<5	<5	13	0
Pakistani	<5	<5	<5	<5	<5	<5	<5	<5	<5	<5	<5	<5	12	0
Asian Bangladeshi	<5	<5	<5	<5	<5	<5	<5	<5	<5	<5	<5	<5	8	0
Total	3947	4160	4086	4112	3815	3679	3633	3313	3272	3593	3364	3960	44934	100

Table 2 illustrates the mode of arrival for patients presenting with trauma injuries. The primary mode of arrival for trauma attendances was private transport (56%).

Table 2: Trauma attendances by mode of arrival, April 2008 to March 2009

Mode of arrival	Apr	May	Jun	Jul	Aug	Sep	Oct	Nov	Dec	Jan	Feb	Mar	Total	%
Private transport	2257	2382	2362	2304	2168	2165	2046	1813	1724	1898	1869	2252	25240	56
Ambulance	1395	1495	1447	1508	1386	1318	1356	1259	1348	1450	1270	1424	16656	37
Public transport	161	150	147	138	125	99	146	151	96	137	131	156	1637	4
Walked in	71	68	61	75	81	45	45	47	43	47	44	67	694	2
Unknown	21	26	26	36	23	17	14	20	25	23	15	20	266	1
Other	26	22	13	29	17	17	19	14	12	14	19	24	226	1
Police	16	17	30	22	15	18	7	9	24	24	16	17	215	0
Total	3947	4160	4086	4112	3815	3679	3633	3313	3272	3593	3364	3960	44934	100

Table 3 presents trauma attendances by source of referral. Six in ten (60%) of all trauma attendances self-referred.

Table 3: Source of referral for trauma attendances, April 2008 to March 2009

Source of referral	Apr	May	Jun	Jul	Aug	Sep	Oct	Nov	Dec	Jan	Feb	Mar	Total	%
Self-referral	2350	2631	2470	2603	2465	2183	2158	1986	2029	2115	1895	2281	27166	60
GP	459	388	584	510	411	620	595	540	468	573	605	637	6390	14
Family member	657	592	546	503	480	437	440	361	343	407	452	535	5753	13
Emergency services	217	276	226	240	232	193	157	171	185	208	153	181	2439	5
Walk-in-Centre	76	70	73	88	72	77	89	75	79	93	75	97	964	2
Other hospital	57	69	64	64	54	55	59	58	43	41	55	78	697	2
Other referrer	34	42	37	47	30	36	42	52	35	62	47	51	515	1
Carer	23	28	18	14	22	22	19	20	28	28	24	27	273	1
Employer	34	31	22	18	11	18	28	19	11	23	16	22	253	1
Police	10	19	22	12	14	10	18	10	21	12	9	29	186	0
Educational establishment	19	8	11	5	13	15	19	17	15	20	26	15	183	0
AED	6	<5	<5	<5	8	8	<5	<5	<5	<5	<5	<5	37	0
Primary care	<5	<5	<5	<5	<5	<5	<5	<5	<5	<5	<5	<5	16	0
General dental practitioner	<5	<5	<5	<5	<5	<5	<5	<5	<5	<5	5	<5	14	0
District nurse	<5	<5	<5	<5	<5	<5	<5	<5	<5	<5	<5	<5	8	0
Health visitor	<5	<5	<5	<5	<5	<5	<5	<5	<5	<5	<5	<5	8	0
Optician	<5	<5	<5	<5	<5	<5	<5	<5	<5	<5	<5	<5	8	0
Physiotherapist	<5	<5	<5	<5	<5	<5	<5	<5	<5	<5	<5	<5	8	0
Social services	<5	<5	<5	<5	<5	<5	<5	<5	<5	<5	<5	<5	8	0
Armed Forces	<5	<5	<5	<5	<5	<5	<5	<5	<5	<5	<5	<5	<5	0
Chiropodist	<5	<5	<5	<5	<5	<5	<5	<5	<5	<5	<5	<5	<5	0
Midwife	<5	<5	<5	<5	<5	<5	<5	<5	<5	<5	<5	<5	<5	0
Orthoptist	<5	<5	<5	<5	<5	<5	<5	<5	<5	<5	<5	<5	<5	0
Prison service	<5	<5	<5	<5	<5	<5	<5	<5	<5	<5	<5	<5	<5	0
Speech therapist	<5	<5	<5	<5	<5	<5	<5	<5	<5	<5	<5	<5	<5	0
Total	3947	4160	4086	4112	3815	3679	3633	3313	3272	3593	3364	3960	44934	100

Table 4 details the injury group of trauma attendances. The most common cause of injury was by other injury (73%). Of those attendances where an injury group was specified 52% were falls and 19% were road traffic accidents.

Table 4: Trauma attendances by injury group, April 2008 to March 2009

Injury group	Apr	May	Jun	Jul	Aug	Sep	Oct	Nov	Dec	Jan	Feb	Mar	Total	%
Other injury	2841	2947	3013	3094	2839	2711	2663	2366	2176	2592	2520	2919	32681	73
Fall	580	610	588	540	492	472	491	498	667	496	413	557	6404	14
RTA	189	249	194	200	176	213	204	219	176	197	155	181	2353	5
Assault	105	139	115	109	115	85	93	71	118	103	96	89	1238	3
Sports injury	117	83	68	67	74	108	81	61	45	101	88	105	998	2
Burns and scalds	49	54	42	48	44	30	41	42	38	44	43	50	525	1
Ingestion	49	55	44	33	61	43	38	36	27	30	29	28	473	1
Deliberate self-harm	16	20	21	19	14	16	16	13	20	27	18	29	229	1
Substance abuse	<5	<5	<5	<5	<5	<5	<5	6	<5	<5	<5	<5	24	0
Firework	<5	<5	<5	<5	<5	<5	<5	<5	<5	<5	<5	<5	9	0
Total	3947	4160	4086	4112	3815	3679	3633	3313	3272	3593	3364	3960	44934	100

Table 5 shows the discharge destination of trauma attendances; nearly a third (32%) of attendees were discharged requiring no follow-up treatment.

Table 5: Discharge destination of all trauma attendees, April 2008 to March 2009

Discharge	Apr	May	Jun	Jul	Aug	Sep	Oct	Nov	Dec	Jan	Feb	Mar	Total	%
Discharged no follow-up	1383	1443	1346	1287	1129	1192	1126	960	980	1102	1071	1294	14313	32
Emergency admissions unit	1043	790	883	982	879	846	944	874	797	881	823	907	10649	24
Admissions	762	977	925	943	877	875	836	736	770	798	809	942	10250	23
Discharged to GP	249	321	315	271	309	239	218	203	194	262	210	235	3026	7
Did not wait	157	211	232	220	232	175	149	212	234	154	155	201	2332	5
Fracture clinic	122	112	116	123	118	107	121	85	79	120	75	113	1291	3
Other	60	96	89	99	87	73	76	69	83	75	65	80	952	2
AED review clinic	49	55	48	61	54	43	35	39	37	35	53	27	536	1
Physiotherapy clinic	31	34	36	37	35	36	44	41	21	59	33	55	462	1
Outpatient clinic	23	35	27	20	28	35	20	22	21	31	19	31	312	1
Sent to other hospital	21	19	24	30	19	17	26	27	18	29	20	28	278	1
Discharged with ear/nose/throat appointment at Whiston	17	27	14	17	26	19	14	16	22	24	15	19	230	1
Return for treatment	22	23	24	17	12	15	20	24	12	17	13	13	212	0
Sent to GP assessment unit	<5	15	5	<5	9	5	<5	5	<5	<5	<5	13	73	0
Discharged returning to GP clinic at Whiston AED	5	<5	<5	<5	<5	<5	<5	<5	<5	<5	<5	<5	18	0
Total	3947	4160	4086	4112	3815	3679	3633	3313	3272	3593	3364	3960	44934	100

Published November 2009

Dan Hungerford (TIIG Analyst)

Centre for Public Health, Research Directorate, Faculty of Health and Applied Social Sciences, Liverpool John Moores University

5th Floor, Kingsway House, Liverpool, L3 2AJ

Tel: 0151 231 8724 Email: d.j.hungerford@ljmu.ac.uk

Website: www.tiig.info (please note that all data requests should be made through the TIIG website)

ⁱTrauma refers to all AED attendances presenting as a result of an intentional or unintentional injury.

ⁱⁱPlease note that all numbers less than five have been suppressed in line with patient confidentiality and if there is only one number <5 in a category then two numbers will be suppressed at the next level (e.g. <6) in order to prevent back calculations from totals.