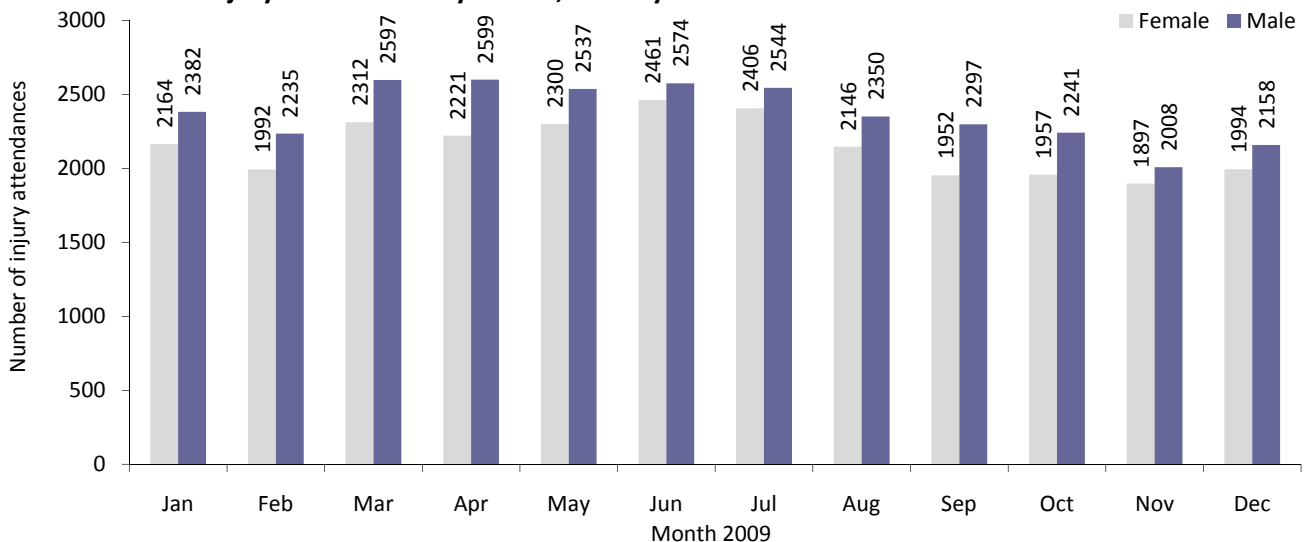


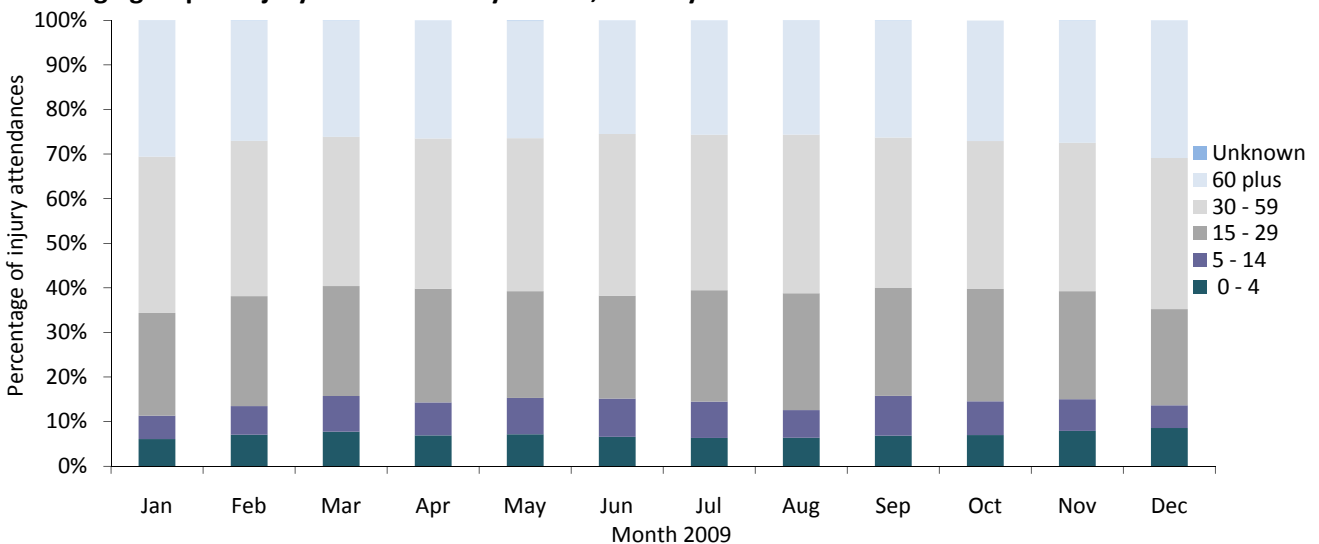
## Whiston Hospital Accident and Emergency Department Monthly Bulletin: January to December 2009

This bulletin provides a breakdown of all injury attendances at Whiston Hospital Accident and Emergency Department (AED) between January and December 2009. Injury attendance peaked in June (n=5,035), with November (n=3,905) having the least number of injury attendances. For all months there were slightly more male (53%) injury attendances than female presenting at Whiston Hospital AED (Figure 1) and over a third (34%) of injury attendances were made by people aged 30 to 59 years and 27% by people aged 60 and over (Figure 2).

**Figure 1: Gender of injury attendances by month, January to December 2009**



**Figure 2: Age group of injury attendances by month, January to December 2009**



The majority (96%) of injury attendances to Whiston AED stated their ethnicity as white (Table 1).

**Table 1: Ethnicity of all injury attendees, January to December 2009<sup>i</sup>**

Ethnicity	Jan	Feb	Mar	Apr	May	Jun	Jul	Aug	Sep	Oct	Nov	Dec	Total	%	
White	4386	4062	4683	4613	4651	4811	4754	4318	4086	4013	3768	4001	52146	96	
Black African	63	62	96	77	84	95	68	67	83	75	61	76	907	2	
Other	28	32	34	38	34	43	36	25	31	38	18	15	372	1	
Chinese	11	12	17	25	17	22	21	18	13	12	13	19	200	0	
Unknown	12	22	19	17	20	18	15	18	9	17	9	***	180	0	
Black Caribbean	11	10	20	16	16	13	21	9	7	18	9	9	159	0	
Not stated	14	12	17	14	11	15	15	22	5	8	10	10	153	0	
Bangladeshi	5	8	9	7	***	7	5	9	6	***	6	***	70	0	
Other Asian background	8	***	6	***	***	***	***	***	***	***	***	***	5	44	0
Black other	5	***	6	***	***	***	***	***	***	***	***	***	6	38	0
Pakistani	***	***	***	***	***	***	***	***	***	***	***	***	***	21	0
Indian	***	***	***	***	***	***	***	***	***	***	***	***	***	20	0
Asian Bangladeshi	***	***	***	***	***	***	***	***	***	***	***	***	***	14	0
<b>Total</b>	<b>4546</b>	<b>4227</b>	<b>4909</b>	<b>4820</b>	<b>4837</b>	<b>5035</b>	<b>4950</b>	<b>4496</b>	<b>4249</b>	<b>4198</b>	<b>3905</b>	<b>4152</b>	<b>54324</b>	<b>100</b>	

Table 2 illustrates the mode of arrival for patients presenting with injuries. The primary mode of arrival for injury attendances was private transport (58%).

**Table 2: Injury attendances by mode of arrival, January to December 2009**

Mode of arrival	Jan	Feb	Mar	Apr	May	Jun	Jul	Aug	Sep	Oct	Nov	Dec	Total	%
Private transport	2528	2444	2913	2835	2822	3019	2982	2704	2498	2433	2305	2291	31774	58
Ambulance	1704	1499	1629	1616	1706	1670	1664	1457	1445	1435	1330	1547	18702	34
Public transport	184	170	203	219	171	205	161	172	180	196	148	181	2190	4
Walked in	61	58	91	92	84	89	92	108	68	79	59	73	954	2
Police	27	20	26	21	29	20	22	29	29	22	24	27	296	1
Other	18	21	27	22	15	14	15	13	15	22	18	23	223	0
Unknown	24	15	20	15	10	18	14	13	14	11	21	10	185	0
<b>Total</b>	<b>4546</b>	<b>4227</b>	<b>4909</b>	<b>4820</b>	<b>4837</b>	<b>5035</b>	<b>4950</b>	<b>4496</b>	<b>4249</b>	<b>4198</b>	<b>3905</b>	<b>4152</b>	<b>54324</b>	<b>100</b>

Table 3 presents injury attendances by source of referral. More than six in ten (61%) injury attendances self-referred.

**Table 3: Source of referral for injury attendances, January to December 2009**

Source of referral	Jan	Feb	Mar	Apr	May	Jun	Jul	Aug	Sep	Oct	Nov	Dec	Total	%
Self-referral	2540	2299	2726	2780	2780	2909	3125	3022	2724	2701	2559	2911	33076	61
GP	727	721	752	632	656	728	726	501	535	561	460	325	7324	13
Family member	546	603	688	659	662	674	514	484	500	432	422	381	6565	12
Emergency services	346	272	321	355	389	365	155	99	102	103	94	160	2761	5
Walk-in-Centre	125	105	134	131	128	127	106	111	125	120	98	101	1411	3
Other referrer	99	76	82	83	58	73	145	128	120	127	145	140	1276	2
Other hospital	52	59	86	75	82	66	73	47	56	48	50	52	746	1
Carer	38	30	39	36	36	25	53	42	34	47	35	33	448	1
Educational establishment	27	28	17	22	15	23	8	18	17	20	15	13	223	0
Employer	28	18	23	21	7	17	16	23	15	19	13	13	213	0
Police	15	11	30	22	15	18	20	14	13	18	12	15	203	0
District nurse	***	***	***	***	***	***	***	5	***	***	***	***	30	0
Primary care	***	***	7	***	***	5	***	***	***	***	***	***	28	0
Unknown	***	***	***	***	***	***	***	***	***	***	***	5	20	0
<b>Total</b>	<b>4546</b>	<b>4227</b>	<b>4909</b>	<b>4820</b>	<b>4837</b>	<b>5035</b>	<b>4950</b>	<b>4496</b>	<b>4249</b>	<b>4198</b>	<b>3905</b>	<b>4152</b>	<b>54324</b>	<b>100</b>

Table 4 details the injury group of injury attendances. The majority of injury attendances were classified as other injury (72%). Of those attendances where an injury group was specified 47% were falls and 25% were road traffic collisions. Assault attendees presenting at the Whiston AED between January and December 2009 were mainly male (57%) and 34% were aged between 15 and 29 years.

**Table 4: Injury attendances by injury group, January to December 2009<sup>ii</sup>**

Injury group	Jan	Feb	Mar	Apr	May	Jun	Jul	Aug	Sep	Oct	Nov	Dec	Total	%
Other injury	3251	3087	3549	3452	3460	3695	3653	3337	3105	3077	2801	2722	39189	72
Fall	588	510	636	622	699	619	576	539	500	458	483	809	7039	13
Road traffic collision	304	260	309	359	290	325	308	288	297	340	333	349	3762	7
Assault	148	147	159	146	134	143	148	136	116	125	93	132	1627	3
Burns and scalds	83	81	87	87	100	101	102	82	72	80	78	76	1029	2
Sports injury	101	88	105	87	75	75	85	59	101	68	69	17	930	2
Ingestion	30	29	28	38	34	47	47	27	28	29	24	31	392	1
Deliberate self-harm	41	25	36	29	45	30	31	28	30	21	24	16	356	1
<b>Total</b>	<b>4546</b>	<b>4227</b>	<b>4909</b>	<b>4820</b>	<b>4837</b>	<b>5035</b>	<b>4950</b>	<b>4496</b>	<b>4249</b>	<b>4198</b>	<b>3905</b>	<b>4152</b>	<b>54324</b>	<b>100</b>

Table 5 shows the discharge destination of injury attendances; over a third (39%) of attendees were discharged requiring no follow-up treatment.

**Table 5: Discharge destination of all injury attendees, January to December 2009**

Discharge	Jan	Feb	Mar	Apr	May	Jun	Jul	Aug	Sep	Oct	Nov	Dec	Total	%	
Discharged no follow-up	1570	1489	1813	1813	1922	2073	2030	1877	1682	1701	1623	1667	21260	39	
Admissions	918	910	1031	1018	1033	1095	1142	990	847	851	824	848	11507	21	
Emergency admissions unit	980	924	1003	887	852	816	787	673	788	782	712	737	9941	18	
Discharged to GP	313	256	278	310	284	283	250	284	258	210	182	177	3085	6	
Did not wait	186	202	260	246	222	232	221	161	201	174	158	205	2468	5	
Fracture clinic	216	138	161	198	185	175	207	181	164	190	132	217	2164	4	
Other	88	81	100	103	96	103	97	93	106	98	93	110	1168	2	
Physiotherapy clinic	78	65	88	76	67	75	64	76	55	49	49	37	779	1	
AED review clinic	53	74	46	57	61	54	54	55	59	51	47	32	643	1	
Sent to other hospital	39	25	35	33	43	37	31	29	18	29	31	40	390	1	
Discharged with ear/nose/throat appointment at Whiston	32	18	25	30	29	29	28	35	15	21	18	23	303	1	
Return for treatment	32	20	21	23	16	32	25	19	24	19	15	33	279	1	
Outpatient clinic	35	22	32	22	23	25	12	20	19	19	19	19	267	0	
Sent to GP assessment unit	***	***	***	***	***	***	***	***	***	***	***	***	***	58	0
Discharged returning to GP clinic at Whiston AED	***	***	***	***	***	***	***	***	***	***	***	***	***	12	0
<b>Total</b>	<b>4546</b>	<b>4227</b>	<b>4909</b>	<b>4820</b>	<b>4837</b>	<b>5035</b>	<b>4950</b>	<b>4496</b>	<b>4249</b>	<b>4198</b>	<b>3905</b>	<b>4152</b>	<b>54324</b>	<b>100</b>	

Published February 2010  
 Dan Hungerford (TIIG Analyst)  
 Centre for Public Health, Research Directorate, Faculty of Health and Applied Social Sciences, Liverpool John Moores University  
 5<sup>th</sup> Floor, Kingsway House, Liverpool, L3 2AJ  
 Tel: 0151 231 8724 Email: [d.j.hungerford@ljmu.ac.uk](mailto:d.j.hungerford@ljmu.ac.uk)  
 Website: [www.tiig.info](http://www.tiig.info) (please note that all data requests should be made through the TIIG website)

<sup>i</sup> \*\*\* Please note that all numbers less than five have been suppressed in line with patient confidentiality and if there is only one number less than five in a category then two numbers will be suppressed at the next level (e.g. <6) in order to prevent back calculations from totals.

<sup>ii</sup> Due to low numbers and patient confidentiality firework injuries have been categorised under other injury.