

Whiston Hospital Emergency Department Monthly Bulletin: July 2009 to June 2010

This bulletin provides a breakdown of all injury attendances at Whiston Hospital Emergency Department (ED) between July 2009 and June 2010. Injury attendance peaked in July (n=4,950), with February (n=3,602) having the least number of injury attendances.

For all months there were slightly more male (52%) injury attendances than female presenting at Whiston Hospital ED (**Figure 1**). Over a third (34%) of injury attendances were made by people aged 30 - 59 years and 26% by people aged 60 and over (**Figure 2**). The majority (96%) of injury attendances to Whiston ED stated their ethnicity as white (**Table 1**).

Table 2 illustrates the mode of arrival for patients presenting with injuries. The primary mode of arrival for injury attendances was private transport (60%).

Table 3 presents injury attendances by source of referral. Two-thirds (66%) of injury attendances self-referred.

Table 4 details the injury group of injury attendances. The majority of injury attendances were classified as other injury (72%). Of those attendances where an injury group was specified 46% were falls and 27% were road traffic collisions (RTCs). Assault attendees presenting at the Whiston ED between July 2009 and June 2010 were mainly male (59%) and 38% were aged between 30 and 59 years.

Table 5 shows the discharge destination of injury attendances; over a four in ten (43%) attendees were discharged requiring no follow-up treatment.

Figure 1: Gender of injury attendances by month, July 2009 to June 2010

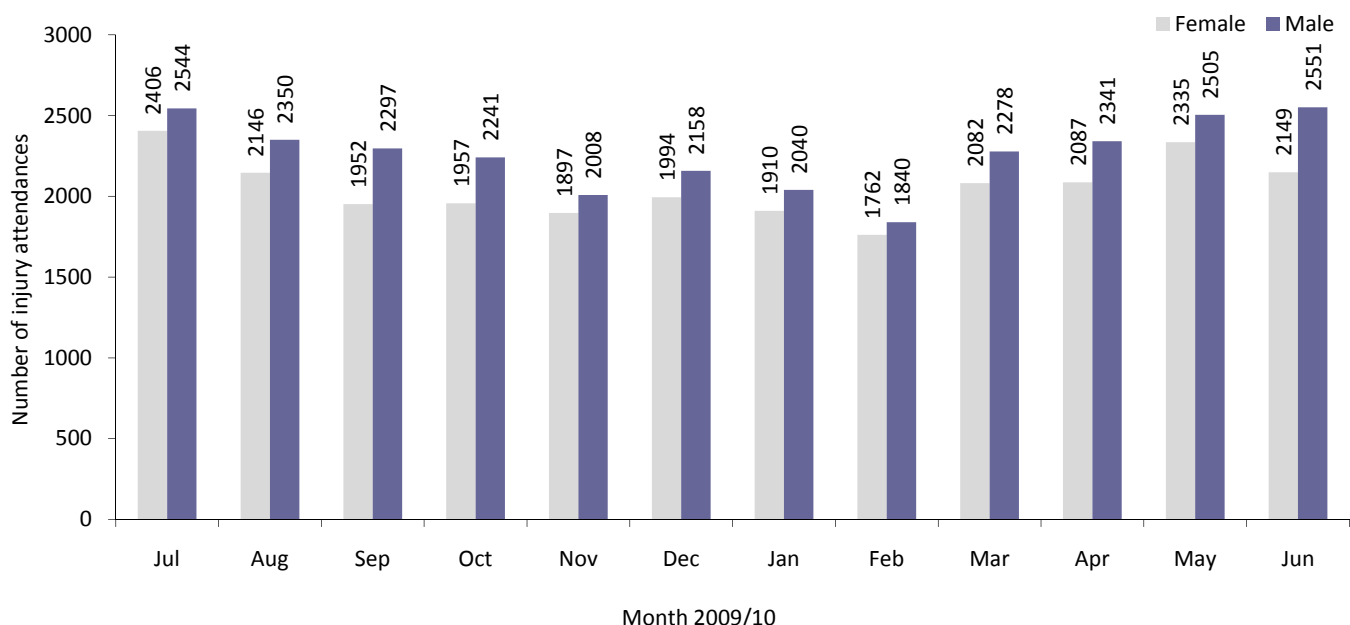


Figure 2: Age group of injury attendances by month, July 2009 to June 2010

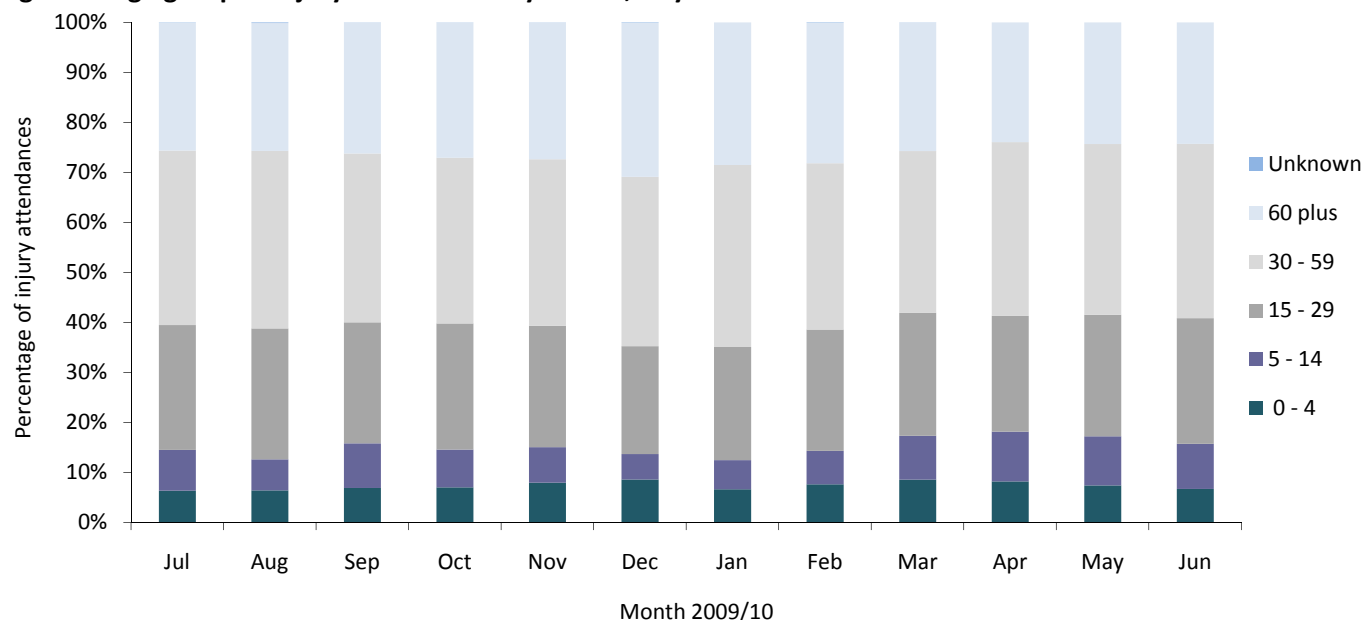


Table 1: Ethnicity of injury attendances, July 2009 to June 2010¹

Ethnicity	Jul	Aug	Sep	Oct	Nov	Dec	Jan	Feb	Mar	Apr	May	Jun	Total	%
White	4754	4318	4086	4013	3768	4001	3786	3459	4205	4265	4650	4532	49837	96
Black African	68	67	83	75	61	76	60	67	69	59	79	77	841	2
Other	36	25	31	38	18	15	33	24	23	23	25	27	318	1
Chinese	21	18	13	12	13	19	13	11	19	20	26	15	200	0
Unknown	15	18	9	17	9	***	16	17	10	24	11	9	159	0
Black Caribbean	21	9	7	18	9	9	17	5	9	13	18	13	148	0
Not stated	15	22	5	8	10	10	9	***	11	7	8	12	121	0
Bangladeshi	5	9	6	***	6	***	7	***	7	***	8	5	64	0
Other Asian background	***	***	***	***	***	5	***	9	***	***	5	***	44	0
Black other	***	***	***	***	***	6	***	***	***	***	***	***	29	0
Indian	***	***	***	***	***	***	***	***	***	5	***	***	24	0
Pakistani	***	***	***	***	***	***	***	***	***	***	***	***	24	0
Asian Bangladeshi	***	***	***	***	***	***	***	***	***	***	***	***	21	0
Total	4950	4496	4249	4198	3905	4152	3950	3602	4360	4428	4840	4700	51830	100

Table 2: Injury attendances by mode of arrival, July 2009 to June 2010

Mode of arrival	Jul	Aug	Sep	Oct	Nov	Dec	Jan	Feb	Mar	Apr	May	Jun	Total	%
Private transport	2982	2704	2498	2433	2305	2291	2280	2131	2637	2827	3058	2983	31129	60
Ambulance	1664	1457	1445	1435	1330	1547	1411	1242	1388	1332	1479	1397	17127	33
Public transport	161	172	180	196	148	181	139	133	199	155	160	174	1998	4
Walked in	92	108	68	79	59	73	68	56	86	70	76	90	925	2
Police	22	29	29	22	24	27	23	22	21	21	27	23	290	1
Other	15	13	15	22	18	23	21	***	19	16	16	20	213	0
Unknown	14	13	14	11	21	10	8	***	10	7	24	13	148	0
Total	4950	4496	4249	4198	3905	4152	3950	3602	4360	4428	4840	4700	51830	100

¹ *** Please note that all numbers less than five have been suppressed in line with patient confidentiality and if there is only one number less than five in a category then two numbers will be suppressed at the next level (e.g. <6) in order to prevent back calculations from totals.

Table 3: Source of referral for injury attendances, July 2009 to June 2010

Source of referral	Jul	Aug	Sep	Oct	Nov	Dec	Jan	Feb	Mar	Apr	May	Jun	Total	%
Self-referral	3125	3022	2724	2701	2559	2911	2524	2322	2799	2836	3369	3175	34067	66
GP	726	501	535	561	460	325	556	425	521	512	360	478	5960	11
Family member	514	484	500	432	422	381	435	425	540	581	568	535	5817	11
Other referrer	145	128	120	127	145	140	129	101	132	117	126	123	1533	3
Emergency services	155	99	102	103	94	160	98	123	126	136	138	157	1491	3
Walk-in-centre	106	111	125	120	98	101	91	96	115	123	138	110	1334	3
Other hospital	73	47	56	48	50	52	42	33	41	38	44	39	563	1
Carer	53	42	34	47	35	33	34	27	36	32	46	33	452	1
Educational establishment	8	18	17	20	15	13	19	16	14	18	15	16	189	0
Employer	16	23	15	19	13	13	11	15	16	14	7	16	178	0
Police	20	14	13	18	12	15	9	12	9	12	15	13	162	0
Unknown	***	***	***	***	***	5	***	***	7	***	7	***	34	0
District nurse	***	5	***	***	***	***	***	***	***	***	***	***	33	0
Primary care	***	***	***	***	***	***	***	***	***	***	5	***	17	0
Total	4950	4496	4249	4198	3905	4152	3950	3602	4360	4428	4840	4700	51830	100

Table 4: Injury attendances by injury group, July 2009 to June 2010ⁱ

Injury group	Jul	Aug	Sep	Oct	Nov	Dec	Jan	Feb	Mar	Apr	May	Jun	Total	%
Other injury	3653	3337	3105	3077	2801	2722	2881	2602	3225	3266	3468	3424	37561	72
Fall	576	539	500	458	483	809	499	434	502	530	601	620	6551	13
RTC	308	288	297	340	333	349	274	303	342	323	404	331	3892	8
Assault	148	136	116	125	93	132	98	82	86	105	123	138	1382	3
Burns and scalds	102	82	72	80	78	76	70	58	76	71	113	87	965	2
Sports injury	85	59	101	68	69	17	77	73	76	87	74	55	841	2
Ingestion	47	27	28	29	24	31	24	28	21	26	33	29	347	1
Deliberate self-harm	31	28	30	21	24	16	27	22	32	20	24	16	291	1
Total	4950	4496	4249	4198	3905	4152	3950	3602	4360	4428	4840	4700	51830	100

Table 5: Discharge destination of injury attendances, July 2009 to June 2010

Discharge	Jul	Aug	Sep	Oct	Nov	Dec	Jan	Feb	Mar	Apr	May	Jun	Total	%
Discharged no follow-up	2030	1877	1682	1701	1623	1667	1676	1571	1933	2007	2191	2200	22158	43
Admissions	1142	990	847	851	824	848	752	841	1521	1393	1521	1423	12953	25
Emergency admissions unit	787	673	788	782	712	737	710	460	***	***	***	***	5649	11
Discharged to GP	250	284	258	210	182	177	242	203	286	329	370	319	3110	6
Did not wait	221	161	201	174	158	205	90	109	171	219	262	244	2215	4
Fracture clinic	207	181	164	190	132	217	190	168	166	183	193	207	2198	4
Other	97	93	106	98	93	110	82	96	84	93	85	91	1128	2
ED review clinic	54	55	59	51	47	32	53	42	53	53	68	76	643	1
Physiotherapy clinic	64	76	55	49	49	37	45	36	47	61	43	33	595	1
Sent to other hospital	31	29	18	29	31	40	26	25	31	22	32	37	351	1
Return for treatment	25	19	24	19	15	33	26	20	22	12	23	31	269	1
Discharged with ear/nose/throat appointment at Whiston	28	35	15	21	18	23	26	15	22	19	21	16	259	0
Outpatient clinic	12	20	19	19	19	19	24	15	23	34	27	23	254	0
Sent to GP assessment unit	***	***	13	***	***	5	6	***	***	***	***	***	35	0
Discharged returning to ED GP clinic	***	***	***	***	***	***	***	***	***	***	***	***	13	0
Total	4950	4496	4249	4198	3905	4152	3950	3602	4360	4428	4840	4700	51830	100

Published September 2010

Johnathan Rooney (TIIG Project Officer)

Centre for Public Health, Liverpool John Moores University, 3rd Floor, Henry Cotton Campus, 15-21 Webster Street, Liverpool, L3 2ET

Tel: 0151 231 4500 Email: d.j.hungerford@ljmu.ac.uk

Website: www.tiig.info (please note that all data requests should be made through the TIIG website)

ⁱ Due to low numbers and patient confidentiality firework injuries have been categorised under other injury.